

**THE  
CITADEL  
THEATRE**

MARLEY'S

# A CHRISTMAS CAROL

**BY DAVID VAN BELLE**

BASED ON THE NOVELLA  
BY CHARLES DICKENS

Presenting  
Sponsor



Season  
Sponsor

**Capital  
Power**





# CITADEL THEATRE

**DARYL CLORAN**  
ARTISTIC DIRECTOR

**SARAH POCKLINGTON**  
EXECUTIVE DIRECTOR

  @CITADELTHEATRE  @CITADELTHEATREYEG

**WE WISH TO ACKNOWLEDGE** that the land on which we gather is Treaty No. 6 territory and a traditional meeting ground and home of the First Nations, including both the treaty signatories – Cree, Saulteaux, Nakota Sioux, Stony and Cree-Iroquois – as well as other Indigenous peoples, such as the Blackfoot and Métis, who occupied this land. We extend our appreciation for the opportunity to live, create, and perform on this territory.

Nikistêyhtamâkânân oma askîwihtâwin ita  
kâ mâwasakôyâhk Nikotwâsik Kâ akihtêk  
omâmawôpayônôwâw Nistam Îyinôwak, nânapo  
ôkih tipahamawâkan tahkikwanênkêwak-Nêhîyawak,  
Nahkawînôwak, Opwâsîmowak, Asinî Pwâtak êkwah  
Nêhîyaw Paskosikanak-êkwah kotakak Îyinôwak,  
tâpiskôc Kaskitêwayasitak êkwah Âpihtwâyak, kâkîh  
kikîwîhkêcik otah. Nitâniskê nanâskôtênân tawâw ôtah  
êh ayâyâhk tita wîci pimâtisîhtamâhk, tita osîhcikêyâhk  
êkwah tita nôkohtihwêyâhk otah askîwihtâwinihk.

The Citadel engages, under the terms of the Canadian Theatre Agreement, professional artists who are members of the Canadian Actors' Equity Association. Production personnel for the Citadel Theatre are members of the International Alliance of Theatrical Stage Employees (I.A.T.S.E.)

The video or audio recording of this performance by any means is strictly prohibited.

# A CHRISTMAS CAROL

BY DAVID VAN BELLE

BASED ON THE NOVELLA BY CHARLES DICKENS

## CAST

Ruth Alexander	Mrs. Dilber, Hilda Fezziwig, Alto Saxophone, Piano, Ensemble
Julien Arnold	Marley, Mr. Fezziwig, Banjo, Ensemble
Patricia Cerra	Marnie, Ensemble
Kevin Dabbs	Drums, Ensemble
Ivy DeGagné	Tim Cratchit
Oscar Derkx	Fred, Bass, Ensemble
Braydon Dowler-Coltman	Ben, Ghost of Christmas Future, Ensemble
Ted Dykstra	Ebenezer Scrooge
Chariz Faulmino	Singer, Phyllis, Ensemble
Daniela Fernandez	Belle, Shopgirl, Ensemble
Steven Greenfield	Barker, Conductor, Piano, Trombone, Ensemble
Graham Mothersill	Topper, Ensemble
Priya Narine	Fanny, Ensemble
Glenn Nelson	Nelson, Ensemble
Lilla Solymos	Ghost of Christmas Past, Ensemble
John Ulyatt	Ghost of Christmas Present, Santa, Ensemble
Patricia Zentilli	Emily Cratchit, Ensemble

## YOUTH ENSEMBLE

Sofia Berry, Liam Cloran, Shelby Dutertre,  
Maksymilian Holko, Athena Reyes, Zenon Roessler,  
Ella Schaloske

## UNDERSTUDIES

Ruth Alexander	Piano
Chariz Faulmino	Belle, Fanny
Kristi Hansen	Emily Cratchit, Hilda Fezziwig, Mrs. Dilber, Phyllis, Singer
Mathew Hulshof	Fred, Topper, Ben, Ghost of Christmas Future
Graham Mothersill	Ghost of Christmas Present
Priya Narine	Marnie
Glenn Nelson	Ebeneezer Scrooge
Troy O'Donnell	Marley, Fezziwig, Nelson, Barker

## CREATIVE TEAM

Daryl Cloran	Director
Cory Sincennes	Set & Costume Designer
Leigh Ann Vardy	Lighting Designer
Mishelle Cuttler	Sound Designer, Music Director
Steven Greenfield	Associate Music Director
Gianna Vacirca	Choreographer
Laura Krewski	Original Choreographer
Wayne Paquette	Assistant Director
Cynthia Jimenez-Hicks	Assistant Director
Janine Waddell	Intimacy Director
Michelle Chan	Stage Manager
Molly Pearson	Assistant Stage Manager
Gaby Phaneuf	Assistant Stage Manager
Frances Bundy	Apprentice Stage Manager
Adam Blocka	Children's Supervisor
Jenna Kerekes	Production Assistant, COVID-19 Health Captain



Caitlan Argueta

Production Assistant

Meg Walker

Production Assistant

**VENUE** Maclab Theatre

**AGE RECOMMENDATION** 6 +

**RUN TIME** Approximately 2 hours and 15 minutes

**INTERMISSION** 15 minutes

**SYNOPSIS** Packed with your favourite classic Christmas tunes, this adaptation of the beloved tale of a miserly old man who is invited to change his ways by the Ghosts of Christmas, will carry you away into the magical era of films like *It's a Wonderful Life* and *Miracle on 34<sup>th</sup> Street*.

**SPECIAL THANKS TO** Kelsie Acton, Trish Cooper & Isaac Vint, Kristi Hansen, Carly Neis & Cynthia Jimenez-Hicks, Alison Neuman, Stefanie Wiens, Clinton Carew, and Laurence Mollerup.



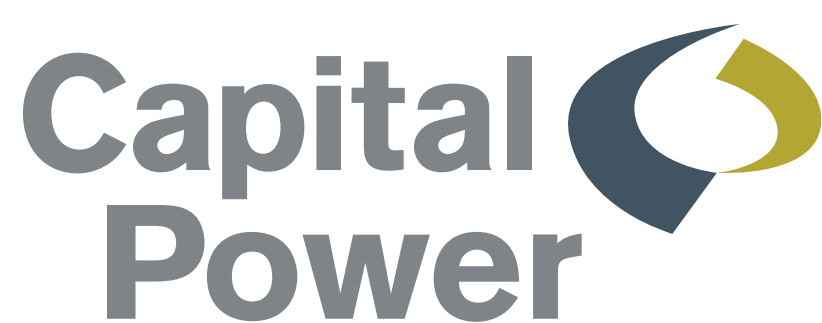
2019 Cast of A Christmas Carol



# Strong communities are powered by strong partnerships.

During performances of **A Christmas Carol**, the Citadel raises funds for Edmonton's Food Bank. Capital Power will match these donations up to \$20,000.

Capital Power is proud to be the 2021/22 Season Sponsor of the Citadel Theatre.



[capitalpower.com](http://capitalpower.com)





# WELCOME TO *A CHRISTMAS CAROL!*

David van Belle's exquisitely written adaptation of *A Christmas Carol* is a magical way to celebrate the live return of one of Edmonton's most beloved family holiday traditions! An ageless tale of a miserly old man who receives visits from the ghosts of Christmas, ultimately inspiring him to change his ways, provides us all with hope. This holiday favourite comes wrapped in those familiar Christmas songs reminiscent of our childhoods while presenting us with a sensory reminder of the joy of the season.

We premiered this new production in 2019. Last year, in the midst of the pandemic, we re-imagined the production for film and were able to share this beautiful production online. And now, we are so excited to gather again in person to share this story with you! COVID-19 considerations have made us take a new approach to this year's production yet again. While we're thrilled to present live theatre again, we value the safety of our audience, artists, and staff above all. In addition to our vaccine and mask protocols, we have also made a few changes to the show. The backstage area in the Maclab Theatre is very small, so we have reduced the cast size of the production this year to ensure everyone is safe. Also, you may notice



that our youth chorus is a little bit taller this year than usual. This year, the chorus is comprised of youth who are 12-15 years old, which allows us to ensure that everyone working on the production is able to be vaccinated and safe. We hope very much to return to a larger cast again next season!

Most importantly, we are proud to celebrate our 20<sup>th</sup> year of partnership with Edmonton's Food Bank. Our thanks to Capital Power for their generous offer to match the first \$20,000 in donations made to the Food Bank this year. Please consider making a donation on your way out of the theatre tonight to help those less fortunate and keep our community strong.

We're so happy that you're here. Enjoy the sights, sounds, and bustling excitement of a Dickensian tale... and from all of us at the Citadel, we wish you a merry Christmas and a happy new year!



A stylized, cursive signature of Daryl Cloran in black ink.

**Daryl Cloran**

ARTISTIC DIRECTOR

[dcloran@citadeltheatre.com](mailto:dcloran@citadeltheatre.com)



A stylized, cursive signature of Sarah Pocklington in black ink.

**Sarah Pocklington**

EXECUTIVE DIRECTOR

[spocklington@citadeltheatre.com](mailto:spocklington@citadeltheatre.com)



# PLAYWRIGHT'S NOTES

## FROM DAVID VAN BELLE

*We snap awake, eyes still squeezed shut, body tense from the torment we've just been through. Our minds are racing—so many things happened, it's hard to process it all. All we know is the pounding of our hearts and the taste of metal in our mouths.*

*Our senses begin to feed us information. Bed. Pyjamas. Pillows.*

*Was it real, or was it all just a nightmare? And is it finally over?*

*We open our eyes just a crack. Morning. Daytime. Light!*

*What day is it today? Do we even dare hope?*

I am overwhelmed with joy and gratitude to return to live performances of *A Christmas Carol* this year, and I hope you are too. One of the things that I love about the theatre is that it speaks directly to the times in which we experience it, in a way that the fixed worlds of film and TV can't. And hoo-boy, the world has changed since we last gathered to hear the story in 2019. A lot.

My mentor, playwright and director Blake Brooker, was fond of asking a piercing question: *Who are you now?* It was his way of exploring how we change over and over again through our lives, and it's a potent question at this critical turning point in global history.



Who are we now, this Christmas 2021? I think we're Scrooge. All of us, right at this moment, having endured the anger, sorrow and terrors of this long, long night, squinting and blinking amidst the hopes and possibilities of returning to light.

Will we return to the lives we led before, lives of self-interest, destruction and miserliness? Or will we live in the Spirit of Christmas, that spirit, distilled five times, of humble openness, humanity and love, and keep it all our years?

We have a chance right now, all of us together. A chance to learn the lessons that this long night and its terrifying visions have taught us. A chance to say "I will not be the person I was because of all that I have seen." A chance to change.

What day is it today? Why, it's Christmas Day! Let's make it count.



*2020 Cast of A Christmas Carol*





JOIN THE CITADEL IN  
CELEBRATING 20  
YEARS OF SUPPORTING  
EDMONTON'S FOOD BANK

# GIVE THE GIFT OF A MEAL!

DONATIONS UP TO \$20,000  
WILL BE MATCHED  
BY CAPITAL POWER!

Please donate as you leave the show,  
or by texting the number below, or by visiting  
[www.edmontonsfoodbank.com/events/  
citadel-theatre-christmas-carol](http://www.edmontonsfoodbank.com/events/citadel-theatre-christmas-carol)

- TEXT -  
**FEEDYEG**  
TO 20222

**GIVE THE GIFT OF A MEAL**  
\$10 & \$20 DONATIONS ACCEPTED VIA TEXT





# REPRESENTATION

The Citadel Theatre recognizes the importance of authentic representation of different bodies and abilities on stage and in the stories we tell. As we look to the future of *A Christmas Carol*, it is our priority that an actor with lived experience of disability and/or chronic illness be sought to play “Tim” in subsequent productions of Dickens’ classic story.

To be truly inclusive for disabled artists takes time, energy, and investment in reimagining building structures and creative processes; it must be done well to ensure barriers are removed to provide a welcoming and effective working space for all. We have spent the last six months putting plans in place to host a disabled actor in the role in our Maclab Theatre, including community consultations, space audits, staff training in disability awareness, and fundraising for renovations. We recognize that this will be ongoing work with constant reflection and investment in resources.

The Citadel would like to extend our sincere gratitude to those that provided paid consult over the last six months and have worked to hold us accountable in our commitments: Kelsie Acton, Kristi Hansen, Carly Neis with Cynthia Jimenez-Hicks, Alison Neuman, Trish Cooper and Isaac Vint.

We would like to thank the Edmonton Community Foundation for making a commitment of \$100 000 in matching funding towards the much-needed accessibility renovations within our building.



Older buildings like the Citadel Theatre are filled with significant barriers to participation for disabled artists and audience members alike, from a lack of accessible seating options to stairwells without lift access, insufficient washroom options, and aging elevators. We are working diligently to secure additional funding to update our building so all can feel welcome, safe, and independent. If you or your business would like to join us in this endeavour, please contact Sydney Stuart, Fund Development Director, at [sstuart@citadeltheatre.com](mailto:ssstuart@citadeltheatre.com).

After the last six months of work, including an incredible region-wide audition process, we are so excited to introduce you to our “Tim” for the



2022 production of *A Christmas Carol*: 9-year-old Elias Martin! Elias loves LEGO and playing frisbee! Elias and his family will be joining us in 2021 to see behind the scenes, watch the show, and to start working with the Citadel team in preparation for next year's production.

**WELCOME, ELIAS! WE CAN'T WAIT FOR YOUR DEBUT NEXT DECEMBER!**





# RUTH ALEXANDER

MRS. DILBER,  
HILDA FEZZIWIG,  
ALTO SAXOPHONE,  
PIANO, ENSEMBLE,  
UNDERSTUDY -  
PIANO

Citadel: *Once*. Ruth moved from the U.K. to Edmonton in 2017. Theatre credits include *The Children* (The Roxy Theatre); *TWO* (Edmonton Fringe Festival); *Silence* (Timms Centre); *Richard III* (Northern Broadsides); *Les Misérables* (U.K. Tour); *Sweeney Todd* (Manchester); *Blonde Bombshells of 1943* (London); *A Midsummer Night's Dream* (Vienna); and *Macbeth* (Liverpool). Ruth's television credits include a recurring role on *Coronation Street*, and she was a regular member of the BBC Radio Drama team. She feels honoured to be a part of Edmonton's festive theatre tradition.





# JULIEN ARNOLD

MARLEY,  
MR. FEZZIWIG,  
BANJO,  
ENSEMBLE

Julien Arnold is an Edmonton-based actor and director. Previous Citadel Theatre credits include *A Christmas Carol*, *The Garneau Block*, *Ring of Fire*, *Once*, *Sense and Sensibility*, *West Side Story*, *Spamalot*, *Beauty and the Beast*, *The Wizard of Oz*, *Servant of Two Masters*, and *A Midsummer Night's Dream*. Other selected Edmonton credits include *Two* (Atlas Theatre), *The Finest of Strangers* (Teatro La Quindicina), *The Taming of the Shrew* (Freewill Shakespeare Festival), *The Comedy Company* (Shadow Theatre), *Spelling Bee* (Mayfield Dinner Theatre), *A Skull in Connemara* (Theatre Network), and *Suburban Motel* (Punctuate! Theatre).

Thank you to Sheiny Satanove.





# PATRICIA CERRA

MARNIE,  
ENSEMBLE

Patricia is an award winning artist with a multi-faceted career as an arts leader, producer, director, and actor. Recently she won the Sterling Award for Outstanding Performance in a Leading Role, Comedy. She was the Intern Artistic Director with Neptune Theatre in Halifax. She is now the Artistic Programs Associate with Musical Stage Company in Toronto. Citadel credits include: *The Fiancée, A Christmas Carol, The Silver Arrow: The Untold Story of Robin Hood, Shakespeare in Love*. Upcoming in Edmonton: *The Mountaintop* (Shadow Theatre).  
More: [patriciacerra.com](http://patriciacerra.com)





# KEVIN DABBS

DRUMS,  
ENSEMBLE

Kevin is honoured, mirthful, and ‘spirited’ (see what he did there?) to be back at the Citadel for this wonderful re-imagining of ye olde Dickens yuletide classic! Kevin introduced Theatresports™ to the Winnipeg improv scene back in the 80s. He has toured all over North America as a drummer. He was featured in *Spin Magazine* for his *Metallica Drummer* video. Select theatre credits: *Buddy: The Buddy Holly Story* (Neptune Theatre); *The Full Monty*, *Dirty Rotten Scoundrels*, *The Wedding Singer* (Mayfield Theatre). Kevin feels so lucky to be working on this production with such a talented bunch of humans! Enjoy!

Love to Jack, Madison, Christine, and all staff and students at Elmwood School!





# IVY DEGAGNÉ

TIM CRATCHIT

Ivy is thrilled to be returning to the Citadel, where her production highlights include Young Jane in *Jane Eyre* (Collider Festival), Susan Cratchit in *A Christmas Carol*, and Agnes in *Slight of Mind* (Theatre Yes co-production). You may also recognize Ivy as the 2019 Fringe Theatre Festival co-mascot, Max from *Where the Wild Things Fringe*. A proud student of Victoria School of the Arts, Ivy enjoys creating through theatre, music, and visual art. Ivy would like to thank her friends, family, and teachers for their support and encouragement.





# OSCAR DERKX

FRED,  
BASS,  
ENSEMBLE

Oscar Derkx is an actor and musician based here in Edmonton. He is also featured in several films, and is a producer for the podcast *My Best Friend Thinks She's Buffy*. Selected credits: *As You Like It* (RMTC/Citadel Theatre); *Peter and the Starcatcher*, *Once, A Christmas Carol* (Citadel Theatre); *Two Gentlemen of Verona*, *The Winter's Tale* (Freewill Shakespeare Festival); *Lost Lemoine* (Teatro La Quindicina); *Suburban Motel Series* (Punctuate! Theatre); *The Antyssey* (Concrete Theatre); *Ride* (Lunchbox Theatre). Upcoming: *Peter Pan Goes Wrong* (Citadel Theatre/Arts Club); *Evelyn Strange* (Teatro La Quindicina). Thank you to Sean Croal.





## BRAYDON DOWLER- COLTMAN

BEN, GHOST OF  
CHRISTMAS  
FUTURE,  
ENSEMBLE

Braydon is an Edmonton-based theatre artist. He is pleased to be coming out of semi-retirement for this production. Select theatre credits include: *Burning Bluebeard* (Edmonton Actor's Theatre); *Shakespeare's R&J* (Kill Your Television); *To Be Moved, Scaramouche Jones, Subway Circus* (Blarney Productions); *The Salon of the Talking Turk* (Teatro La Quindicina); *Fortune Falls* (Catalyst Theatre); *Passion Play* (Wild Side Productions); *A Christmas Carol, The Tempest, The Pillowman* (Citadel Theatre). Training: Citadel/Banff Centre Professional Training Program; University of Alberta BFA acting program. Upcoming: *Jane Eyre* (Citadel Theatre).





# TED DYKSTRA

EBENEZER  
SCROOGE

Ted has acted, directed, and created for every major theatre in Canada and many around the world including New York, London, and Tokyo. He is a founding member of Soupepper Theatre, and co-founder of The Coal Mine Theatre, both in Toronto. Arguably best known for co-creating one of Canada's most successful plays, *2 Pianos, 4 Hands*, Ted also wrote hit musical *Evangeline* (Citadel Theatre, Charlottetown Festival). He has acted in countless TV shows and movies, watch for him on Season 6 of *The Expanse* and hear him as Dad Tiger on *Daniel Tiger's Neighbourhood*. He has been the recipient of numerous awards including six Doras, a Gemini, a Sterling, a Merritt, a Chalmers, and the key to his hometown, St. Albert!

Ted regularly thanks the universe for his wife Diana Bentley, and his children Theo, Rosie, and Henry!





# CHARIZ FAULMINO

SINGER, PHYLLIS ,  
ENSEMBLE,  
UNDERSTUDY -  
BELLE, FANNY

Chariz Faulmino (She/they/Siya) is a Filipinx-Canadian multi-disciplinary performer based in Amiskwacîwâskahikan, Treaty 6 Territory. Recent Credits include: *Erlking Film, Summer Roadshows* (Chris Scott); *S.I.S.T.E.R. Remount* (Citadel Theatre/Fox Den Collective); *Sprouts Festival 2021* (Concrete Theatre); *Almost A Full Moon - Collider Festival, Windows Into New Work* (Citadel Theatre); *Letters To No One & Songs To No One* (Dammitammy Productions). They wish you a Happy Holidays & Maligayang Pasko!

Thank you to her loved ones who encourage and lift her everyday.

To her loved ones who are here in spirit.





# DANIELA FERNANDEZ

BELLE,  
SHOPGIRL,  
ENSEMBLE

Daniela Fernandez (she/her) is a Latinx multidisciplinary artist. She is a graduate of the MacEwan University's Theatre Arts program. Over the last year, Daniela has been diving into the world of sound, with the support of local designers. In 2020, she was one of the inaugural recipients of the RBC Horizon Emerging Artists Program at The Citadel Theatre for Sound Design. Recently, she designed *The Fiancée* (Citadel Theatre) and *Hiraeth* (Bright Young Things). Daniela can be found performing on stage in *Mamma Mia!* (Mayfield Dinner Theatre) and sound designing *Smoke* (Tiny Bear Jaws) this upcoming year. Feliz Navidad y un prospero año nuevo a todos!





# STEVEN GREENFIELD

ASSOCIATE MUSIC  
DIRECTOR,  
BARKER, CONDUCTOR,  
PIANO, TROMBONE,  
ENSEMBLE

Born and raised in Mohkínstsis (Calgary), and now proudly calling Amiskwacîwâskahikan (Edmonton) home, Steven (he/him) is a music director, musician and actor, with credits that span over 85 productions across Canada. Recent credits include *Into the Woods* (MacEwan), *Ring of Fire* and *Once* (Citadel), 'Max' in *Lend Me a Tenor* (Mayfield), *The Comedy Company* (Shadow), and 'Jerry Lee Lewis' in *Million Dollar Quartet* (Arts Club). Upcoming: *Peter Pan Goes Wrong* and *ELVIS* (Citadel), *Million Dollar Quartet* (Theatre Calgary), *Ring of Fire* (Aquarius), and *The Wrong People Have Money* (Shadow).





# KRISTI HANSEN

UNDERSTUDY -  
EMILY CRATCHIT,  
HILDA FEZZIWIG,  
MRS. DILBER,  
PHYLLIS, SINGER,  
ENSEMBLE

Kristi is a disabled theatre artist and the co-founder/co-Artistic Director of The Maggie Tree. Previous credits include: *hiraeth* (Bright Young Things); *Dear Rita* (Confed Centre); *Candide* (Edmonton Opera); *The Silver Arrow* and *Alice Through the Looking Glass* (Citadel Theatre); *The Invisible* (Catalyst Theatre); *The Hollow* (Vertigo Theatre); *Irma Voth* (Theatre Network); *Christina/Philippe* (Northern Light Theatre); *The Sound of Music* (National Arts Centre); *Comedy of Errors*, *King Lear*, *Romeo and Juliet*, and *Love's Labour's Lost* (Freewill Players); *The Supine Cobbler*, *Age of Arousal*, and *Hroses: An Affront to Reason* (The Maggie Tree).





# MATHEW HULSHOF

UNDERSTUDY -  
FRED, TOPPER,  
BEN, GHOST OF  
CHRISTMAS  
FUTURE,  
ENSEMBLE

Mathew is an Edmonton-based artist, last seen at the Citadel as Mr. Darcy in *Miss Bennet: Christmas at Pemberley*. Other credits include *Bed and Breakfast* (Theatre Network), *Happy Birthday Baby J* (Shadow Theatre) *A Fit, Happy Life!*, *A Lesson in Brio*, *I Heard About Your Murder* (Teatro La Quindicina), *Witch Hunt at the Strand*, (Workshop West), *Deathtrap* (Mayfield), *What Gives* (Lunchbox Theatre), *Nevermore* (Catalyst/Persephone Theatre), *Our Man in Havana* (Bright Young Things). Mathew is a five-time Sterling Award nominee. He won for his performance in Concrete Theatre's production of *Smokescreen*.





# GRAHAM MOTHERSILL

TOPPER, ENSEMBLE,  
UNDERSTUDY -  
GHOST OF  
CHRISTMAS  
PRESENT

Graham is thrilled to get out of the house again, and to spend time with everyone here tonight. Theatre credits include: *A Christmas Carol* (Citadel Theatre), *A Christmas Carol*, *The Crucible*, *The Tempest* (Theatre Calgary); *Fortune Falls* (Catalyst Theatre/ATP); *until the next breath* (Catalyst Theatre), *CTRL – ALT – DEL*, *The Antyssey* (Concrete Theatre); *How to Leave*, *The Curing Room* (Theatre Outré/Theatre BSMT); *The Fall of the House of Atreus* (Impossible Mongoose Productions). Film/television credits include: *Wynona Earp*, *Like Right Now*, *Dive*, *King Crow*. Happy Holidays!



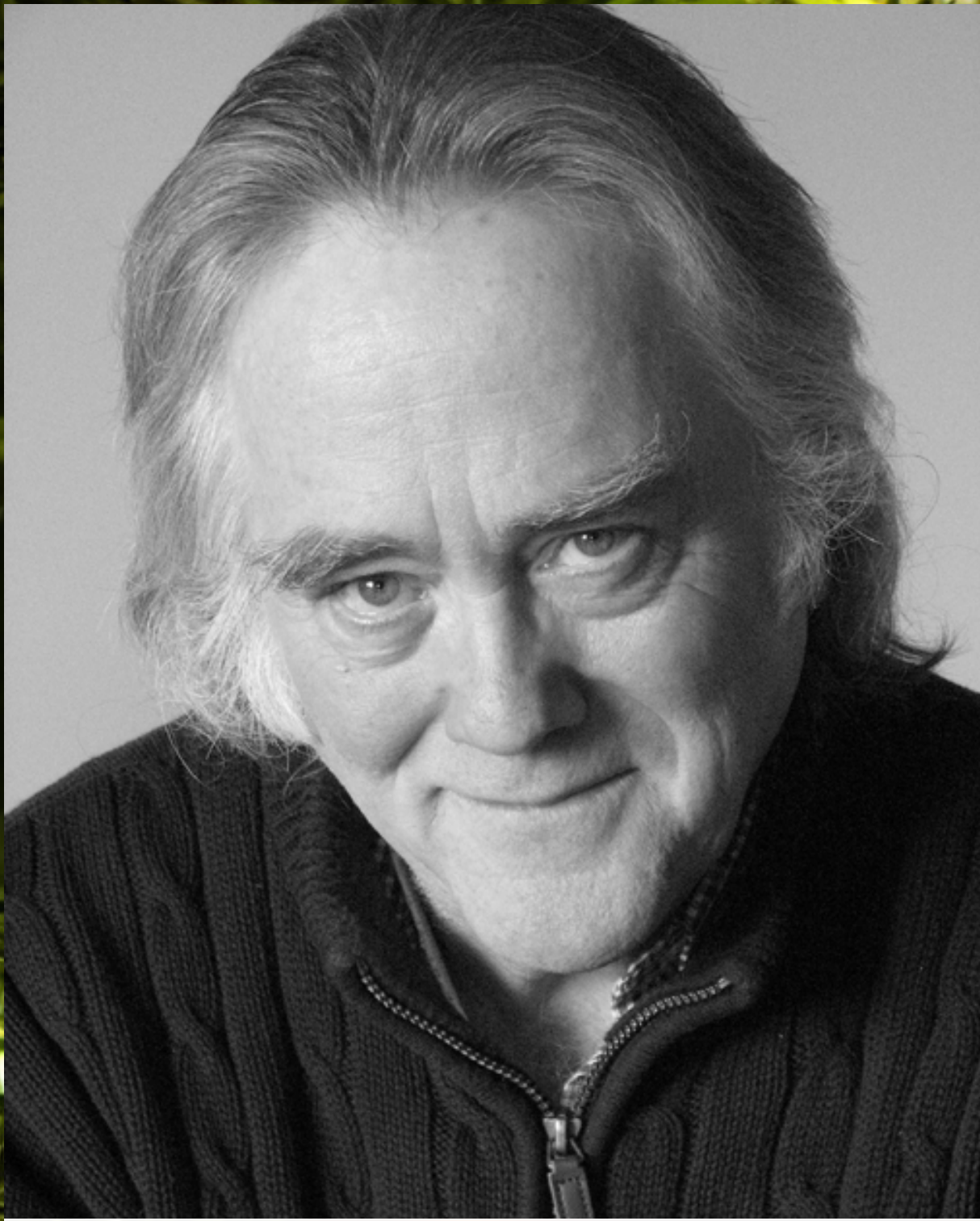


# PRIYA NARINE

FANNY, ENSEMBLE,  
UNDERSTUDY -  
MARNIE

Priya is delighted to finally return to this wonderful story. Select credits include: *A Christmas Carol* (Citadel); *Slight of Mind* (Citadel/Theatre Yes); *Queen Lear is Dead* (Fox Den Collective); *Constellations* (Flaming Peanuts); *She's Not Him and He's Not Her* (Empress of Blandings); *Meet Me Under the Gnarly Tree* (Cardiac Theatre); *Chrysothemis, The School For Scandal* (Studio Theatre). Priya is a graduate of the BFA Acting program at the University of Alberta. Endless love and thanks to my family and friends, especially Blaire and Willow.





# GLENN NELSON

NELSON,  
ENSEMBLE,  
UNDERSTUDY -  
EBENEZER  
SCROOGE

Citadel: *The Candidate, The Party, A Christmas Carol, Peter and the Starcatcher, Death of a Salesman, One Man, Two Guvnors*, and *Beauty and the Beast*. Glenn is delighted to be part of *A Christmas Carol* with these remarkable people. At Shadow Theatre: *Outside Mullingar, Mistakes Were Made, The Odd Couple, Sexy Laundry* and *Flyfisher's Companion*.





# TROY O'DONNELL

UNDERSTUDY -  
MARLEY, FEZZIWIG,  
NELSON, BARKER,  
ENSEMBLE

Troy is an actor and director. He is also an Artistic Associate with the Freewill Shakespeare Festival. Previous Credits Include: *The Tempest, Julius Caesar, Hamlet* (Citadel Theatre); *Much Ado About Nothing, The Winter's Tale, The Two Gentlemen of Verona* (Freewill Shakespeare Festival); *The 39 Steps* (Mayfield); *It's a Wonderful Life, Ten Lost Years, A Christmas Carol* (Theatre Northwest); *The Umbrella* (Quest Theatre); *The Early Bloomer, Smokescreen* (Concrete Theatre); *Anxiety, Shoot/Get Treasure/Repeat, The Righteous Woman* (Theatre Yes); *An Inspector Calls, The Lion, The Witch, and The Wardrobe, The Diary of Anne Frank* (Rosebud Theatre).



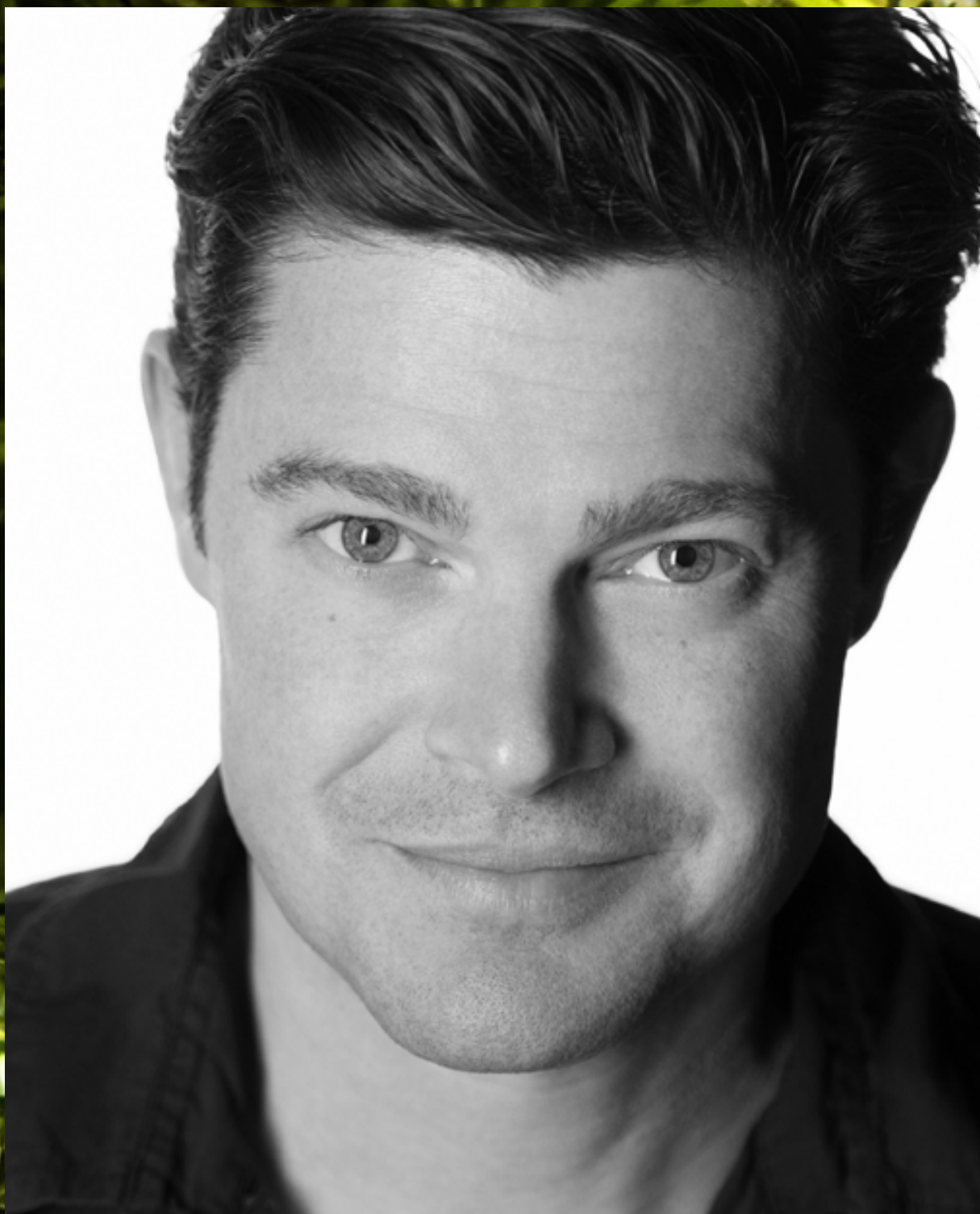


# LILLA SOLYMOS

GHOST OF  
CHRISTMAS PAST,  
ENSEMBLE

Lilla (she/her) is a Hungarian-Canadian artist who was born in Budapest. She is thrilled to join the *A Christmas Carol* family for her sixth year! She started acting at Foote Theatre School at the age of six and has been involved with theatre ever since. Lilla is a 9<sup>th</sup> grader at Vic and a dancer at DU. Her newest passion is diving :) Previous credits: *A Christmas Carol* (Citadel Theatre), *Matilda the Musical* (Citadel Theatre/Manitoba Theatre Centre), *The Bad Seed* (Teatro La Quindicina). Happy Holidays, everyone! Kelleemes Ünnepeket!





# JOHN ULLYATT

GHOST OF  
CHRISTMAS  
PRESENT,  
SANTA,  
ENSEMBLE

John is very familiar to Citadel audiences from *South of China* in 1996 to *Every Brilliant Thing* right before the pandemic. Favourite Citadel roles include *Cabaret*, *The Pillowman*, *Matilda* (co-production with RMTC/Arts Club), *Beauty and the Beast* (co-production with Theatre Calgary), *Rocky Horror Show*, *Death of a Salesman*, and *Billy Bishop Goes To War*. He has worked across the country in many theatres from The Segal Centre in Montreal to The Belfry Theatre in Victoria. For the past year and a half, John has been Head Distiller at Lone Pine Distilling. Merry Christmas!





# PATRICIA ZENTILLI

EMILY CRATCHIT,  
ENSEMBLE

Patricia Zentilli has performed across Canada in theatre, television, and film. Edmonton Theatre credits include *Mamma Mia!*, *The Curious Incident of the Dog in the Nighttime*, *Alice Through the Looking Glass* (Citadel Theatre); *The Last 5 Years*, *The Gravitational Pull of Berenice Trimble* (Theatre Network); *Matara* (Workshop West); *Mack and Mabel* (Plain Jane); *Noises Off*, *I Love You, You're Perfect, Now Change*, *Little Shop of Horrors*, *Putnam Counting Spelling Bee*, *Dirty Rotten Scoundrels* (Mayfield). This Spring, Patricia will be playing Judy in Citadel Theatre's production of *9 to 5: The Musical*.





**Proud to  
support the  
Arts in  
Edmonton.**

We are working together with **Citadel Theatre**.  
It's just one way we are helping to open doors  
for a more inclusive and sustainable tomorrow.

**td.com**





# YOUTH ENSEMBLE



**BACK ROW (L TO R): ZENON ROESSLER,  
ATHENA REYES, LILLA SOLYMOS,  
MAKSYMILIAN HOLKO,  
IVY DEGAGNÉ, ELLA SCHALOSKE,  
LIAM CLORAN**

**SEATED ON FLOOR (L TO R): SOFIA BERRY,  
SHELBY DUTERTRE**





## DARYL CLORAN

DIRECTOR

Artistic Director of the Citadel. Daryl has directed internationally in countries such as South Africa and Bosnia and Herzegovina, and across Canada, including: Shaw Festival, National Arts Centre, Theatre Calgary, Neptune Theatre (Halifax), Arts Club (Vancouver), Canadian Stage and Tarragon (Toronto). For the Citadel, Daryl has recently directed: *The Fiancée*, *Shakespeare in Love*, *Matilda*, *The Silver Arrow*, and *The Candidate & The Party*. Daryl's Beatles-infused adaptation of *As You Like It* has played at the Citadel, Bard on the Beach (Vancouver), RMTC (Winnipeg) and is currently running at Chicago Shakespeare Theater.





## DAVID VAN BELLE PLAYWRIGHT

David is an Edmonton-based playwright whose works include *The Highest Step in the World*, *Liberation Days*, *GIANT*, and *The Last Voyage of Donald Crowhurst*. David has been Writer-in-Residence for the Edmonton Public Library, Playwright-in-Residence at Alberta Theatre Projects, an ensemble member of One Yellow Rabbit and Creator-in-Residence for Ghost River Theatre. *A Christmas Carol* couldn't have been written without many wise and useful observations from his partner Vanessa Sabourin. And this year's production is dedicated to Harry Van Belle, his dearly loved father, with hope for a gentle journey into the next adventure.





# CORY SINCENNES

SET & COSTUME  
DESIGNER

Cory is an award-winning designer whose set, costume, lighting, and video designs have received both national and international recognition. Cory earned a degree in Architectural Studies from Carleton University before studying design at Ryerson Theatre School. He also holds a MFA in Theatre Design from the University of Alberta. Recent designs include *Ring of Fire*, *Matilda*, *Once*, *Shakespeare in Love*, *Crazy for You*, *Million Dollar Quartet*, *Venus in Fur*, *Romeo and Juliet*, *Spamalot*, *The Rocky Horror Show*, *Evangeline*, *Peter and the Starcatcher*, *Mary Poppins*, and *Next to Normal*.





# LEIGH ANN VARDY

LIGHTING  
DESIGNER

Citadel: *The Silver Arrow*. Recent favourite projects include *The Neverending Story* (Stratford); *The Color Purple, Kamp* (Neptune Theatre); *The Secret Life of a Mother* (Theatre Centre); *Between Breaths, The Colony of Unrequited Dreams* (Artistic Fraud); *The Glace Bay Miners' Museum, Metamorphoses* (National Arts Centre); *What a Young Wife Ought to Know, and The God That Comes* (2b theatre). Leigh Ann is a member of the Associated Designers of Canada. She is the recipient of seven Merritt awards for design, and was nominated for the Siminovitch Prize. When not designing, she teaches at the National Theatre School of Canada.





# MISHELLE CUTTLE

MUSIC DIRECTOR,  
SOUND DESIGNER

Mishelle is a composer, sound designer, and musician based in Vancouver. Past projects at the Citadel: *The Candidate*, *The Party*, and *Sweat*. Other favourites include: *Made in Canada* (rice & beans), *The Quartettes* (Newworld/The Chop), *Shakespeare in Love*, *Lysistrata*, *Done/Undone* (Bard on the Beach); *The Matchmaker* (Arts Club); *Break Horizons: a concert documentary* (The Cultch); and *Titus Bouffonius* (Rumble). Next up: *Clean* (Newworld); and *The Seventh Fire* (Delinquent). Mishelle is a graduate of NYU's Tisch School of the Arts and of UBC Theatre. She is a member of the Associated Designers of Canada. [www.mishellecuttler.com](http://www.mishellecuttler.com)





# GIANNA VACIRCA

CHOREOGRAPHER

Gianna Vacirca is a dancer, actor, choreographer and performing artist. She is also an Italian pastaia and the creator of bell'uovo, a bespoke naturally colourful handmade pasta business based here in Edmonton (@bell\_uovo). Coming up, Gianna will be performing in *Jane Eyre* at the Citadel before choreographing Tiny Bear Jaws' newest play and heading to Toronto for Why Not Theatre's *RISER*. Previous Credits Include: *Bears* (Punctuate! Theatre & Dreamspeakers & Citadel Theatre); *Miss Bennet: Christmas at Pemberley*, *A Christmas Carol* (Citadel Theatre); *Noises Off* (Mayfield Dinner Theatre); *Vague Harvest*, *Ludicrous Pie*, *A Second Round of Seconds* (Teatro La Quindicina); *Blood: A Scientific Romance* (The Maggie Tree); *Hamlet*, *Two Gentlemen of Verona*, *Comedy of Errors* (Freewill Shakespeare Festival).





# LAURA KREWSKI

ORIGINAL  
CHOREOGRAPHER

Choreography credits include *Mamma Mia!*, *West Side Story*, *Spamalot*, and *Shakespeare in Love* (Citadel Theatre); *Next to Normal* (Citadel/Theatre Calgary); *Enron* (National Arts Centre); *Home is a Beautiful Word* (Belfry/Persephone Theatre); *Jesus Christ Superstar*, *Chicago*, and *Footloose* (The Mayfield); *Candide* (Edmonton Opera); *The 25<sup>th</sup> Annual Putnam County Spelling Bee* (Belfry/Arts Club); and new musicals *RICH* and *Rapa Nui* (MTYP). Laura has choreographed original musicals *Vigilante*, *Nevermore*, *Frankenstein*, *Hunchback*, *Fortune Falls*, and *The Invisible* for Catalyst Theatre. Laura has received the YWCA Woman of Distinction Award, five Sterling Awards, a Betty Mitchell and a Lucille Lortel nomination for her work on the Off-Broadway run of *Nevermore*.





# WAYNE PAQUETTE

ASSISTANT  
DIRECTOR

Wayne is a director, producer, stage manager based in Amiskwacîwâskahikan (Edmonton). He is the Artistic Director of Blarney Productions. Previous directing credits for the Citadel include: *A Christmas Carol*, *Blackbird*, *Polaroid Stories*; *The Blonde*, *the Brunette and the Vengeful Redhead* (co-director); *West Side Story*, *The Wizard of Oz*, *The Glass Menagerie*, *Shining City*, and *Doubt: a parable* (assistant director). Much love to Denise and Aimée.





# CYNTHIA JIMENEZ-HICKS

ASSISTANT  
DIRECTOR

Cynthia (she/her) is a Filipino-settler theatre artist from Amiskwaciwâskahikan. She has developed new Canadian theatre with companies such as the Stratford Festival, fu-GEN Asian Canadian Theatre, Bad Hats, Studio 180, and Factory Theatre. Cynthia's new play, *TUNE TO A* (co-created with Carly Neis and Cameron Kneteman), aims to shine a spotlight on disability representation and allyship - it will be premiering at Azimuth's Chinook Festival in 2022. Theatre Highlights: *The Candidate*, *The Party*, *A Christmas Carol* (Citadel Theatre), *Girls Like That* (Tarragon Theatre), *This London Life* (Grand Theatre), *Boys, Girls and Other Mythological Creatures* (Carousel Players). Film & TV: *From* (Epix Studios & MGM International), *In The Dark* (CW Network), *Hudson & Rex* (Shaftesbury/Pope Productions), *Barbelle* (Boss&Co). Training: National Theatre School of Canada. Up next Cynthia is joining the San Francisco cast of *Harry Potter and the Cursed Child*.





# JANINE WADDELL

INTIMACY  
DIRECTOR

Janine is an Edmonton based Intimacy and a Sterling nominated Fight Director, as well as an Intimacy Coordinator and Stunt Performer. Previous Citadel and Young Company Credits Include: *The Fiancée; The Curious Incident of the Dog in the Night-Time; After Juliet; Midsummer Night's Dream; Bat Boy: The Musical*. Previous Theatre Credits Include: *Simone el le Whole Shebang* (L'UniThéâtre); *MacBeth* (The Malachite Theatre Collective). Film Credits Include: *Under the Banner of Heaven* (FXP, Imagine Television); *Billy the Kid* (MGM International); *Black Summer* (Netflix); *The Ballad of Audrey Earnshaw* (Gate 67 Films). She is the lucky mother of four.





# MICHELLE CHAN

STAGE MANAGER

Michelle is the resident stage manager at the Citadel Theatre and has been privileged to be working with the amazing team here for the last 21 seasons. Some of her favourite past Citadel Theatre credits include: *A Christmas Carol, Every Brilliant Thing, Ring of Fire, Once, The Silver Arrow, Shakespeare in Love, West Side Story, Avenue Q, One Man, Two Guvnors, Spamalot, Private Lives, Beauty and the Beast, A Few Good Men, The Sound of Music, The Rocky Horror Show, August: Osage County, The Forbidden Phoenix, Sweeney Todd, Heaven, and Mary's Wedding.*





# MOLLY PEARSON

ASSISTANT  
STAGE MANAGER

Citadel: *Made in Italy*, *The Garneau Block* (Stage Manager); *Children of God*, *Peter and the Starcatcher*, and *A Christmas Carol* (Assistant Stage Manager). Molly's recent credits include stage managing *The Two Gentlemen of Verona*, *A Comedy of Errors*, and *The Merchant of Venice* (Freewill Shakespeare Festival); *Last Chance Leduc* (Snowflake Productions); *Shakespeare's R&J* (Kill Your Television); *Bello* (Concrete Theatre/ L'UniThéâtre); *Bust* (Theatre Network); *The Passion of Narcisse Mondoux* (Northern Light Theatre/ L'UniThéâtre); and assistant stage managing *Vigilante* (Catalyst Theatre).





# GABY PHANEUF

ASSISTANT  
STAGE MANAGER

Gaby is ecstatic to be a part of Citadel Theatre's Production of *A Christmas Carol*. Previous Credits include: *A Closer Walk With Patsy Cline*, *Keep Calm & Rock On*, *Playing with Fire*, *Class of '63* (Mayfield Dinner Theatre); *Happy Birthday Baby J*, *Vanya and Sonia and Masha and Spike*, *The Comedy Company*, *Outside Mullingar*, *Annapurna*, *Ten Times Two* (Shadow Theatre); *La fille du facteur*, *Mentire*, *La nuit, la raison dort* (L'UniThéâtre); *Curtains* (MacEwan); *Little Women*, *Carousel* (Foote in the Door Productions); *Hansel & Gretel* (Edmonton Opera). Thank you to those who made it possible for me to be here.





# FRANCES BUNDY

APPRENTICE  
STAGE MANAGER

Frances is a stage manager, lighting designer, front of house manager and will be directing for the UofA's upcoming New Works Festival. She is also the Technical Director for independent company ReadyGo Theatre. Previous credits include: *Here There Be Night*, *Slight of Mind* (Workshop West), *Brother Rat*, *I, Animal, Monster* (ReadyGo Theatre), *The Secret in the Wings*, *Don Juan Comes Back from the War*, *Richard III* (Timms Centre for the Arts). She would like to thank Erik for being her rock every day.



# SONG LIST

## **CAROL OF THE BELLS**

Lyrics by Peter J. Wilhousky  
Carl Fischer Music (ASCAP)  
Used by Permission. All Rights Reserved.

## **IT'S THE MOST WONDERFUL TIME OF THE YEAR**

By Edward Pola and George Wyle  
Publisher: Barnaby Music Corp.  
Used by Permission. All Rights Reserved.

## **WE WISH YOU A MERRY CHRISTMAS**

English traditional. Public Domain.

## **HAVE YOURSELF A MERRY LITTLE CHRISTMAS**

By Hugh Martin and Ralph Blane  
1943, 1944 Renewed 1971, 1972 EMI Catalogue  
Partnership (PWH)/admin. by EMI Feist Catalog Inc.  
(ASCAP). Used by permission.

## **GOD REST YOU MERRY, GENTLEMEN**

English traditional. Public Domain.

## **WHITE CHRISTMAS**

Music and Lyrics by Irving Berlin  
This selection is used by special arrangement with  
Rodgers & Hammerstein: A Concord Company, on  
behalf of the Estate of Irving  
Berlin [www.irvingberlin.com](http://www.irvingberlin.com). All Rights Reserved.

## **I'LL BE HOME FOR CHRISTMAS**

By Walter Kent, Kim Gannon &  
Buck Ram Gannon & Kent Music (ASCAP)  
Used by Permission. All Rights Reserved.

## **I TOLD SANTA CLAUS TO BRING ME YOU**

By Pinky Tomlin  
Bourne Co. Music (ASCAP)  
Used by Permission. All Rights Reserved.

## **WINTER WONDERLAND**

Written by Felix Bernard & Richard B Smith  
Public Domain (Canada).



## **IT'S BEGINNING TO LOOK A LOT LIKE CHRISTMAS**

Written by: MEREDITH WILLSON  
Courtesy of FRANK MUSIC CORP. &  
MEREDITH WILLSON  
MUSIC (ASCAP)

## **SINTERKLAAS KAPOENTJE**

Dutch traditional. Public Domain.

## **O LITTLE TOWN OF BETHLEHEM**

English traditional. Public Domain.

## **I WANT A HIPPOPOTAMUS FOR CHRISTMAS**

Words and Music by John Rox  
© Copyright 1950 (Renewed) 1953 (Renewed)  
Edwin H. Morris & Co., New York, NY  
TRO-Folkways Music Publishers, Inc.,  
New York, NY controls  
All rights for the World outside the United States.  
Used by Permission.

## **HOLLY JOLLY CHRISTMAS**

By Johnny Marks  
ST NICHOLAS MUSIC INC (ASCAP)  
Used by Permission. All Rights Reserved.

- TEXT -  
**FEEDYEG**  
**TO 2022**

**GIVE THE GIFT OF A MEAL**  
\$10 & \$20 DONATIONS ACCEPTED VIA TEXT







# MAKING SURE THE SHOWS WE LOVE, DON'T BECOME THE SHOWS WE LOVED.

We're grateful for the role the arts play in uplifting Edmontonians and keeping our community vibrant. A big thanks to the Citadel for finding new ways for us to enjoy this holiday tradition so it continues for years to come.

**WITH LOVE FROM**

**EPCOR**



# WHAT WE BELIEVE

The Citadel Theatre is in the heart of amiskwaciwâskahikan ᐱᓂᑦᑲᓕᓴᓵᑦᑎᓪᑯᓄᓐ (Edmonton, AB), and we are proud to call Treaty 6 territory home. As a regional theatre, it is integral that we ensure that the stories we tell, as well as the composition of our artists, board, staff, students, and audience are reflective of the diverse lived experiences in this dynamic city.

We commit to dismantling the systems of oppression that our organization has benefited from. We acknowledge our privilege as one of the largest arts organizations in Alberta, and one of the largest regional theatres in Canada; it is our responsibility to enshrine this commitment at the heart of our company. We pledge to be held accountable to this ongoing work with transparency and in dialogue with our community.

We believe this work requires immediate and ongoing action and constant reflection. We are building an anti-racism and anti-oppression intersectional framework through training, paid consultation, internal analysis, the building of an Equity, Diversity & Inclusion Committee, a commitment to Edmonton's 35//50 Initiative, and significant policy change and accountability through the entire organization.

We are proud to be part of our city's vibrant theatre community and commit to working together with our colleagues to exchange knowledge and ensure lasting systemic change at the Citadel and throughout the arts



community. We welcome and celebrate all voices, all bodies, and all experiences.

This is a living statement that has been crafted by Citadel Theatre's Equity, Diversity & Inclusion Committee. It was last updated on May 26, 2021. If you have any questions, please contact:

[EDICOMMITTEE@CITADELTHEATRE.COM](mailto:EDICOMMITTEE@CITADELTHEATRE.COM)

## VISION STATEMENT

The Citadel Theatre believes in being Inclusive, Innovative, and International in our programming and practices

**INCLUSIVE** We celebrate, welcome, and share stories with the many different communities that make up Edmonton. Our stages come alive with different voices and cultures. We strive to make our productions and our facilities inclusive and accessible; we believe the Citadel is a place where everyone belongs.

**INNOVATIVE** Our programming will celebrate new work, new performance styles, and productions that experiment with dramatic form. We will develop large-scale new work by Edmontonian, Canadian and international playwrights. We will create collisions between different art forms, and present work that includes dance, music, and digital storytelling.

**INTERNATIONAL** We will present and collaborate with exciting theatre-makers from around the world, as well as taking the fantastic work of the Citadel to audiences everywhere.



# DID YOU KNOW...

the Citadel Theatre is a registered charity?  
We rely on the support of our incredible community to help us continue to offer relevant and entertaining performances on our stages and life-changing opportunities to artists of all ages and abilities through our educational programming. Please help us continue to enrich the cultural fabric of Edmonton by donating today at [citadeltheatre.com](http://citadeltheatre.com)!



**THE  
CITADEL  
THEATRE**



# RECOGNIZING OUR PARTNERS

## SEASON SPONSOR



## PRESENTING SPONSORS



*A Christmas Carol*



*9 to 5: The Musical*

## PRODUCTION SPONSORS



*9 to 5: The Musical*



*Peter Pan Goes Wrong*



## PERFORMANCE SPONSORS



*A Christmas Carol*



*Peter Pan Goes Wrong*



*Peter Pan Goes Wrong*



# PROGRAM SPONSORS



Young Companies

I Can Pretend! Program



House Series

Students Club

Pay What You Choose



RBC Horizon Emerging Artist

Associate Artistic Director



Community Partner

Community Partner

# OFFICIAL SUPPLIERS





# MEDIA SPONSORS









# PREMIER SUPPORTERS

**THANK YOU TO OUR PARTNERS IN THE  
CREATION OF THEATRE AT THE CITADEL:**

**The Hole Family**

**The Eldon and Anne Foote Fund**

**Maclab Development Group**

**The John and Barbara Poole Family Fund**

**The Joseph H. Shoctor Fund**

---

## GOVERNMENT AND FOUNDATION FUNDERS

**Edmonton**



Funded by the  
Government  
of Canada

Financé par le  
gouvernement  
du Canada



Canada Council  
for the Arts

Conseil des Arts  
du Canada



Foundation

---

We acknowledge the support of the Canada Council for the Arts, which last year invested \$195 million to bring the arts to Canadians throughout the country.

Nous remercions le Conseil des arts du Canada de son soutien. L'an dernier, le Conseil a investi 195 millions de dollars pour mettre de l'art dans la vie des Canadiennes et des Canadiens de tout le pays.





## **DR. JOSEPH H. SHOCTOR, 1922 – 2001**

EXECUTIVE PRODUCER AND FOUNDER  
OF THE CITADEL THEATRE

### **JOE'S VISION**

brought professional theatre to Edmonton

### **JOE'S DREAM**

built the Citadel Theatre

### **JOE'S SPIRIT**

continues to inspire the theatre we create today

### **JOE'S LEGACY**

lives on through a generous gift to the Citadel  
from his estate

---

## **HENRY HOLE, 1884 – 1954**

On the Citadel's 30th Anniversary, a gift was made by the Company of Harry Hole, James F. Hole, Ralph K. Hole and Robert W. Hole on behalf of the Hole family — in honour of their late father, Henry Hole.

The Citadel Theatre is proud to honour Henry Hole's integrity, compassion and leadership in the dedication of this complex to his memory.



# ANNUAL SUPPORT

**THANK YOU!** We extend our heartfelt thanks to all our donors, whose generosity plays a crucial role in ensuring our community has the opportunity to experience the joy of performing arts. All of our donors have a profound and lasting impact on the quality, accessibility, and relevance of the Citadel's productions, facility, and educational offerings.

## STEWARD

Gifts of \$10,000+

Randy & Wendy Dupree  
Ada Hole  
Al & Fran Olson  
Kayla Shoctor  
Marshall & Debby Shoctor  
John & Dianne Storey

## ARTISTIC DIRECTOR

Gifts of \$5000-\$9999

1 Anonymous  
McCoy Family Foundation  
The Polar Foundation  
Dr. Lorraine Bray & Jim Carter OC  
M & J Dal Bello  
Lesley Cormack  
Brent & Deborah Hesje

## DIRECTOR

Gifts of \$2,500 - \$4,999

The Honourable Darlene Acton  
Bruce & Carol Bentley  
Brian & Barbara Burrows  
James Casey & Gail Verity  
Judith Cosco  
Watson Family

Wolfgang & Beth Kaminski  
Allen & Patti Kramer  
Donna Krucik  
Esther Ondrack  
Sir Francis Price & The Honourable Marguerite Trussler  
Grace & Arnold Rumbold  
Aroon Sequeira  
Dale & Chris Sheard  
Sam Withanachchi  
Ralph Young

## STAR

Gifts of \$1000-\$2499

2 Anonymous  
Flanagan Foundation  
Pratch Family Foundation  
Timbers Consulting & HazOps Inc.  
Harvey & Judith Abbott  
Jennifer Addison  
Dr. Ghalib Ahmen & Derek Wicks  
Diana & Laurence Andriashek  
Roger Babichuk  
Frank Calder  
Marguerite & Zbigniew Chrzanowski  
Daryl Cloran & Holly Lewis  
Todd & Judy Gilchrist

Arlene Gladstone & Hamish Cameron  
James Greenough  
Brenda & John Inglis  
Gail & Andrew Jarema  
Norman & Valerie Kneteman  
Liz Kohle  
Ken & Jennifer Kouri  
James & Maggie Laing  
Robert & Dawn Lemke  
Linda & Kim MacKenzie  
Neil & Pamela Martin  
Laurie & Dave McInnes  
Lisa Miller & Farrel Shadlyn  
David Mundy  
Lewis & Lindsay Nakatsui  
Catrin Owen  
Leslie & Rick Penny  
David & Rachel Ross  
Kimberlee Stadelmann  
Kim Thompson & John Wilson  
David Lorne Tyrrell  
Lee Ann & Lorne Tyrrell  
David Verbicky  
Kim & Don Wheaton



**LEAD**

Gifts of \$500-\$999

1 Anonymous  
Gary Boehm Fund  
Carol Blair & Associates Inc.  
Daniel Ernest Bettcher  
Elizabeth Cherry  
Karen Dyberg  
Andy & Marianne Elder  
Liane Rae Faulder  
Gaie Goin  
Sari Haas  
Mary Sturgeon & Matthew Halstead  
Carol R. Jackson  
Hanae Kiyooka  
Linda & Siegfried Kowand  
Pat Luxford  
Douglas & Claire McConnell  
Averie & Carman McNary  
Edna & Cal Nichols  
Cliff & Connie Otto  
Fred & Helen Otto  
C. Thomas & Judith Peacocke  
Jean & Edward Posyniak  
Tina & Tony Rota  
Shauna J. Scott  
Merle & Neil Taylor  
Michael & Kathleen Tomy  
Mary-Ann & Andy Trachimowich  
Robert Van Soest  
Shannon van Soest  
Doug & Dorothy Warren  
Betty Young

**SUPPORTING**

Gifts of \$100-\$499

12 Anonymous  
Jean & Gerry Staring Fund  
Theresa Agnew  
Allan Alcock  
Kathryn Aleong  
Sandra M. Anderson  
Martin & Anna Andrea  
Vance Avery  
Lorelli Barbutza  
Maurice & Annette

Bastide  
Andrew & Susan Benkovich  
Isabel Bernete  
Lucille Birkett & Randy Busby  
Kathey & Mark Birtles  
Stan Bissell  
Julia Boberg  
Heather Boyd  
Teresa & Robyn Boyko  
E Ross Bradley  
Margery E. Brown  
Denise I. Bryden  
Irene Cameron  
Martin Carroll  
Kate Chambers  
Mr. Brian Charette  
Jacqueline Charlesworth  
Sharleen M. Chevraux  
Rohit Chokhani  
Brent Christopherson  
Nancy J. Clark  
Jennifer Clover  
Marcie Coutts  
Kim & Rick R. Craig  
Pemme Cunliffe  
Leeann Currie  
Chris Danchuk  
Marilyn Darwish  
Linda Medland Davis  
Karen Davison  
Dorothy Dawson  
Frank C. DeAngelis  
Marcella Dejong  
Brian & Anita Denniss  
Jim & Pauline Drinkwater  
Sylvia Duffus  
Ian & Lynne Duncan  
Roland Duquette  
Erin & David Edwards  
Joy Edwards  
Beverley Ellingson  
Carol Engelking  
Alison Eshpeter  
Dean M. Evanger  
Solymos Family  
Elizabeth Faulder  
Gail Faulkner  
Martin & Peggi Ferguson-Pell  
Lil Filewych  
Robert T. Fleming  
Cathy G. Flood  
Sylvia H. E. Flood

Tim Fort  
David France & Marion Haggarty-France  
Barb Funk  
Myrna Fyfe  
Lorie Garritty  
Marla Gordulic  
Bob & Alayne Graves  
Susan Green & Stuart Roth  
Royston Greenwood  
Audrey Groeneveld  
Catherine & James Hammond  
Cathy & David Harbinson  
Faye Hatch  
Jocelyn Hey  
Ainsley Hillyard  
Patsy Ho  
Bruce & Gail Hogle  
Victoria Holota  
Donna Holowaychuk  
Lauretta Howard  
Theresa Hryciw  
Kelvin Hussey  
Rob & Judy Hutchinson  
Clare Irwin  
Marilyn Jackson  
Kelvin Jones  
Jatinder & Mala Kalra  
Bob Kamp  
Paula Kelly  
Don V. Kennedy  
Janice Kent  
Raeanna Koo  
Sylvia A. Kother  
Adam Lachacz  
Joy & David Lardner  
Kathryn & Steven Lavery  
Sigmund Lee  
Paul & Clarissa Lewis  
Mary Lister  
Myron & Maureen Liviniuk  
Sandra & Jim Lockhart  
Chris & Cecile Lord  
Liz Luchko  
Christie Lutsiak  
Victoria Anne Luxton  
Janice MacDonald  
Stephen & Catherine Madsen  
Don & Christina Mah  
Isobel Mailloux  
Linda Maki



John Markey	Eric Rice	Sydney Stuart
Estelle I. Marshall	Sheila Ringrose	Caroline Stuart
Linda May	Ron & Carol Ritch	Craig Stumpf-Allen
Anne McLellan	Lindsay C. Robinson	Frank & Rosanne Thede
Juliet McMaster	Dean & Jan Rokosh	Maggie R. Thompson
Deb McRae	Betty Ross	Karen L C. Titanich
Donna Meen	Phil Roy	Mary-Ann & Andy
Dr. Bubbles & Evelyn	Merceline Runzer-	Trachimowich
Meer	Steeves	Alana Mae Tucker
Daniel Melenchuk	Mitch & Maryann	Nancy Tymchak
Jennifer Mikula	Sabourin	Carol Vaage
Marie Montgomery	Penny Salmon	Henriette van Hees
Joan Morrison	Deborah Salo	Daniel A. Vandermeulen
Sonya & Greg Mowbrey	Kim Sanderson	David & Heather Vickar
Drs. Nakai	Adrienne Sannachan	Chris Vilcsak
Lynne J. Neis	Andrew & Janet Schalm	Lori Anne Wall
Craig Neuman & Leita	Culley Schweger-Bell	Glenn Walmsley & Lois
Seiver	Dawna Scrivens	Love
Anne Nothof	Jack Seto	Nicole Watts
Jennifer J. Oakes	Glenn & Margaret	Michele Wedemire
David & Paula	Sharples	William & Debra Wells
Onderwater	Deb Shaw	Fred West & Chris
Kathy Packford	Sol & Shirley E.	Brzezowski
Stacey & Chris Padbury	Sigurdson	Daniel Westfall
Marian Palahniuk	Vivian Simmonds	Maya Wheelock
Bhupen & Lata Parekh	Gerry & Barbara Sinn	Audrey J. Whitson
Richard & Catherine	Sheila Sirdar	Kathy & Lorris Williams
Perry	Lynn Smarsh	Eva Willox
Tammy Pidner	Jacqueline Smith	Willis Winter
Heather Pontikes	Sherry Smith	William & Dorothy
Paul & Leslie Precht	Sandra Smith	Wolodko
John D. Punko	Dale Somerville	Richard & Vivian Wong
Diana Purdy	Tim Spelliscy	Susan Jane Wright
Paul Puszczak	Elout & Adalei Starreveld	Keith Wylie
Andrew & Carol	Martha Steenstrup	Randall & Nancy Yatscoff
Raczynski	Leland & Judy Stelck	Linda M. Youell
Dylan Reade	Lori Stewart & Jack	Mary Anne Yurkiw
Gary Redmond	Jervis	
Barbara Redmond-Ellehoj	Bill Stoley	
Wes Owen Rempel	Keith Strong	

To learn more about donating to the Citadel Theatre, please visit [www.citadeltheatre.com](http://www.citadeltheatre.com) or contact Rebekah Andrews at [randrews@citadeltheatre.com](mailto:randrews@citadeltheatre.com). Charitable BN 11922 7387 RR0001. Every effort has been made to ensure the accuracy of our donor information. Listing includes donations of \$100 or more. If we have made an error or omission, please contact us at [randrews@citadeltheatre.com](mailto:randrews@citadeltheatre.com). We apologize for any inconvenience.



# CITADEL STAFF

## BOARD OF GOVERNORS

Solomon Rolinger  
O.C. Chair

Marshall Shocter  
O.C. Past Chair

Bruce Bentley  
Treasurer

Tom Redl  
Secretary

Wendy Dupree  
Ex Officio

Frederick K.  
Campbell

Jacqueline  
Charlesworth

J.G. Greenough

Ada Hole

Jack McBain

Arliss Miller

Aroon Sequeira

Chris Sheard

Kayla Shocter

Dr. Robert Westbury

Sheila Witwicky

Ralph Young

## BOARD OF DIRECTORS

Jeff Boadway  
Chair

Jennifer Addison  
Vice Chair

Wendy Dupree  
Past Chair

Sandra Haskins  
Treasurer

Roger Babichuk

Hunter Cardinal

Wanda Costen  
Derrique DeGagné  
Kaitlyn Hunder  
Marcie Kiziak  
Joy Lardner  
Constance Scarlett

## HONOURARY DIRECTORS

Jack N. Agrios  
Jane Batty  
Ken Bautista  
Joanne Berger  
Christine Bishop  
Dan Block  
Guy Bridgeman  
Frank Calder  
Gary G. Campbell  
Betty Carlson  
Donald A. Carlson  
Marilyn Cohen  
Reg Copithorne  
Len Dolgoy  
Allison Edwards  
Dennis Erker  
Grant Fairley  
John C. Forster  
Frank Gibson  
James Gillespie  
Jane Halford  
Jean Hamilton  
Brian Hetherington  
Becky Hole  
Ted Hole  
Mike House  
Gary Killips

Richard Kirby  
Stuart Lee  
Beverlee Loat  
Al Maurer  
Ashif Mawji  
Maureen McCaw  
Lisa Miller  
Susan Minsos  
Terry Nistor  
Bob Normand  
Ted Power  
Jerry Preston  
Henry (Hank) Reid  
Rob Reynolds  
Charlotte Robb  
Margot Ross-Graham  
Barbara Shumsky  
Peter Silverstone  
Gaurav Singhmar  
Larry Staples  
Esther Starkman  
Marianne Takach  
Merle Taylor  
Mr. Justice Dennis R.  
Thomas  
Brian Tod  
John Tweddle  
Brian Vaasjo  
A.H. Wachowich  
Bob Walker  
Dr. Marvin Weisler  
Bart West  
Eve Willox  
David Wilson  
Doris Wilson  
John Yerxa



**HONOURARY GOVERNORS**

David Bentley  
Marc de La Bruyère  
Anne Foote  
Sandy Mactaggart  
Catrin Owen

**LEADERSHIP**

Daryl Cloran  
Artistic Director  
Sarah Pocklington  
Executive Director

**ARTISTIC**

Jessie van Rijn  
Producer  
Mieko Ouchi  
TD Associate  
Artistic Director  
Luc Tellier  
Director, Education  
& Outreach  
Helen Belay  
Associate Artist  
Tai Amy Grauman  
Associate Artist  
Wayne Paquette  
Associate Producer  
Diana Stevenson  
Manager, Foote  
Theatre School

**ADMINISTRATION**

Kimberlee Stadelmann  
Associate Executive  
Director  
Peni Christopher  
Asst. to the A.D.  
Company Manager  
Heather Watson  
Human Resources  
Rebekah Andrews  
Executive Assistant

**MARKETING AND SALES**

Brianna Gallagher  
Marketing and Sales  
Director  
Kristen Hiemstra  
Creative Director  
Susanne Chmait  
Social Media and  
Community Coordinator  
Rebecca Harding  
Digital Web Designer  
Arthur Mah  
Videographer

**FACILITY**

Louis Barron  
Director, Maintenance  
Bill Daniels  
Yang Yang

**JANITORIAL**

Bee Clean Services

**SECURITY**

Alberta Crowd  
Management

**GUEST SERVICES**

Harmonie Tower  
Patron Relations  
Manager  
Eden Edwards  
Asst. Patron  
Relations Manager  
Paul Gabrielson  
Head of Hospitality and  
Guest Experience  
Hayden Weir  
Hospitality Manager  
Melissa Budinski  
Volunteer Coordinator

**GUEST SERVICES SUPERVISORS**

Emily Boyle  
Melissa Budinski  
Laurel Carter  
Ian Crichton  
Josephine Hendrick  
Emma Jones  
Rebecca Mattison  
Brennan Murphy  
Ben Osgood  
Doug Salahub  
Maia Trotter  
Elaine Vo

**GUEST SERVICES REPRESENTATIVES**

Isabella Balkie  
Sam Banigan  
Gabby Benard  
Kevin Cambridge  
Fiona Chachanna  
Brooklyn Decker  
Victoria DeJong  
Dani Dreger  
Bailey Exell  
Cameron Freitas  
John Gunter  
Islamul Haque  
Brittany Hines  
Rune Jander  
Hale Johnston  
Melanie Letourneau  
Zoya Mahmood  
Lauren Marusin  
Graham Mothersill  
Chris Pereira  
Elyse Roszell  
Kera Stevenson  
Alex Voutchkov  
Kate Walker  
Lauren Zazula



## FUND DEVELOPMENT

Sydney Stuart  
Director, Fund  
Development

Rachel Bokenfohr  
Corporate Giving Manager

Rebekah Andrews  
Coordinator, Fund  
Development

## PRODUCTION

Cheryl L. Hoover  
Director of Production

Patrick Fraser  
Technical Director

Gal Minnes  
Asst. Production Manager

Jacinda Grummett  
Asst. Technical Director

Matthew Koyata  
Asst. Technical Director

Kyla Maki  
Administrative Assistant

Michelle Chan  
Resident Stage Manager

Nick Rose  
Acting Head of Audio

Jordan Beaubien  
Audio

Peter Locock  
Head of Scenic Carpentry

Chris Hayes  
Asst. Head of Scenic  
Carpentry

Greg Cardinal  
Scenic Carpenter

Serge Menard  
Scenic Carpenter

Tegan Herron  
Acting Head of Electrics

Ben Eastep  
Asst. Head of Electrics

Tiffany Martineau  
Electrics

Alana Rice  
Electrics

Nicole Deibert  
Head of Scenic Paint

Elizabeth Zena Jenson  
Asst. Head of Scenic Paint

Jim Meers  
Head of Props

Angie Sotiropoulis  
Asst. Head of Props

Charlotte Hunt  
Props

Connor MacDonald  
Props

Elizabeth Zena Jensen  
Props

Marc Anderson  
Head of Stage Carpentry

Kris Aasen  
Asst. Head of  
Stage Carpentry

Greg Cardinal  
Stage Carpenter

Andre LaFrance  
Stage Carpenter

Serge Menard  
Stage Carpenter

Patsy Thomas  
Head of Wardrobe

Laura Lee Osborne  
Asst. Head of Wardrobe /  
Milliner

Claude Tanguay  
Cutter

Barb Becker  
Fabricator

Olivia Derksen  
Stitcher

Brenda Inglis  
Stitcher

Nancy Malott  
Stitcher

Kathryn Neumann  
Stitcher

Olivia Derksen  
Head of Wardrobe Running

Jonathan Beaudoin  
Dresser

Mandy-lynn Mattson  
Dresser

Emma Allarie  
Wardrobe Maintenance

Doug Field  
Wardrobe Maintenance

Katie Patton  
Head of Wigs

Christa Hoefling  
Asst. Head of Wigs

Amber Furlong  
Wigs

Rebecca K. Klassen  
Wigs

## YOUNG COMPANY INSTRUCTORS

Deviani Andrea

Tracy Carroll

Kimberley Denis

Ainsley Hillyard

David Horak

Ian Leung

Kim Mattice-Wanat

Larissa Poho

Andrew Ritchie

Kate Ryan

## FOOTE THEATRE SCHOOL INSTRUCTORS

April Banigan

Ellen Chorley

Sydney Cogan-Grahn

Quinn Contini

Jaime Garcia

Crystal Hanson

Sally Hunt

Sydney Keenan

Josh Languedoc

Conrad Leibel

Barbara Mah

Rhys O'Donnell

Clayton Plamondon

Deanna Robillard



Eileen Sproule  
Julie Sucie  
Kim Turner

**STUDENTS CLUB  
FACILITATORS**

Deviani Andrea  
Liam Monaghan

**VOLUNTEERS**

Zoe Afaganis  
Hasra Ali  
Mackenzie Altheim  
Johanna Andreoff  
Judith Babcock  
Shelley Benson  
Erika Beyer  
Karen Bokenfohr  
Florence Borch  
Ken Borch  
Marie Bowerman  
Marcella Boyle  
Allan Budlong  
Margot Byer  
Patrick Caron  
Dee Cartledge  
Rob Cauti  
Lil Filewych  
Irene Gagne  
Louise Gagne  
Dan Germain  
Bonita Gillespie  
Marion Grab  
Margaret Gronnestad

Julie Harvey  
Jeff Haswell  
Rosemarie Heaney  
Brad Heller  
Diane Helmers  
Maria Hollinshead  
Laura Hughes  
Doug Hunter  
Alice Huynh

Mary Johnston Therrien  
Samantha Ju  
Joanne Kallal  
Hanae Kiyooka  
Robin Knight,  
Eva Kopecka  
Arndt Kuethe  
Janice Kuethe  
Wendy Kurtz  
Karen Lewis-Caron  
Leola Losier  
Elizabeth Luchko  
Ross Machetchuk  
Dawn Madill  
Aidan McBride  
Joslyn McDonald  
Donna McKay  
Donna Miller  
Karen Miller  
Desiree Molnar  
Joan Murchie  
Andrea Newman  
Florence Nieberding  
Gerald Onciul  
Linda Orlecki

Susan Patenaude  
Krista Precosky  
Doug Racine  
Leila Ragoonanan  
Joan Redman  
Barbara Reinhardt  
Lori Ristoff  
Cheryl Ritchie  
Louise Rogucki  
Sukhjit Saimbhee  
Frankie Scarth  
Susan Schroter  
Angela Seery  
Art Shea  
Theresa Shea  
Amanda Sim  
Colette Slevinsky  
James Smibert  
Tammy Smith  
Victoria Spang  
Deb Stack  
Rhonda Taft  
Arlene Travnik  
Diane Trithardt  
Christine Tupper  
Christine Twardzik  
Lacey Untereiner  
Brenda Voyce  
Liz White-MacDonald  
Kay Willekes  
Vanessa Wilson  
Dave Wolkowski  
Joyce Wong  
Laura Wylde