

**THE
CITADEL
THEATRE**



**PETER
PAN GOES
WRONG**

By HENRY LEWIS, JONATHAN SAYER
AND HENRY SHIELDS

Season
Sponsor



CITADEL THEATRE

DARYL CLORAN
ARTISTIC DIRECTOR

SARAH POCKLINGTON
EXECUTIVE DIRECTOR



@CITADELTHEATRE



@CITADELTHEATREYEG

WE WISH TO ACKNOWLEDGE that the land on which we gather is Treaty No. 6 territory and a traditional meeting ground and home of the First Nations, including both the treaty signatories – Cree, Saulteaux, Nakota Sioux, Stony and Cree-Iroquois – as well as other Indigenous peoples, such as the Blackfoot and Métis, who occupied this land. We extend our appreciation for the opportunity to live, create, and perform on this territory.

Nikistêyhtamâkânân oma askîwihtâwin ita
kâ mâwasakôyâhk Nikotwâsik Kâ akihtêk
omâmawôpayônôwâw Nistam Îyinôwak, nânapo
ôkih tipahamawâkan tahkikwanênkêwak-Nêhîyawak,
Nahkawînôwak, Opwâsîmowak, Asinî Pwâtak êkwah
Nêhîyaw Paskosikanak-êkwah kotakak Îyinôwak,
tâpiskôc Kaskitêwayasitak êkwah Âpihtwâyak, kâkîh
kikîwîhkêcik otah. Nitâniskê nanâskôtênân tawâw ôtah
êh ayâyâhk tita wîci pimâtisîhtamâhk, tita osîhcikêyâhk
êkwah tita nôkohtihwêyâhk otah askîwihtâwinihk.

The Citadel engages, under the terms of the Canadian Theatre Agreement, professional artists who are members of the Canadian Actors' Equity Association. Production personnel for the Citadel Theatre are members of the International Alliance of Theatrical Stage Employees (I.A.T.S.E.)

The video or audio recording of this performance by any means is strictly prohibited.

The Citadel Theatre,
Kenny Wax Ltd, Stage Presence Ltd & Kevin McCollum
in association with Arts Club Theatre Company,
by arrangement with Mischief Worldwide Ltd
Presents the Mischief Theatre Production

PETER PAN GOES WRONG

CAST

Alexander Ariate	Dennis
April Banigan	Francis
Alexandra Brynn	Sandra
Jamie Cavanagh	Jonathan
Chris Cochrane	Robert
Belinda Cornish	Annie
Gabriel Covarrubias	Cornley Crew B
Oscar Derkx	Max
Sebastian Kroon	Trevor
Rochelle Laplante	Lucy
Camille Legg	Cornley Crew A
Andrew MacDonald-Smith	Chris

UNDERSTUDIES

Gabriel Covarrubias	Dennis, Max and Cornley Crew A
Andrew Cownden	Chris, Robert, Trevor, Jonathan, Cornley Crew B
Rochelle Laplante	Sandra
Camille Legg	Lucy, Annie, Frances

CREATIVE TEAM

Henry Lewis	Writer
Jonathan Sayer	Writer
Henry Shields	Writer
Adam Meggido	Director
Rob Falconer	Composer
Richard Baker	Composer
Steven Greenfield	Music Director

Simon Scullion	Set Designer
Roberto Surace	Costume Designer
Matt Haskins	Lighting Designer
Jeff Osterlin	Associate Lighting Designer
Ella Wahström	Sound Designer
Owen Hutchinson	Associate Sound Designer
Christine Bandelow	Choreographer
Ainsley Hillyard	Assistant Choreographer
Janine Waddell	Fight Director and Stunt Coordinator
Samara Von Rad	Stunt Coordinator
Karen Johnson-Diamond	Assistant Director
Andrew MacDonald-Smith	Dance Captain, Vocal Captain
Oscar Derkx	Fight Captain
Michelle Chan	Stage Manager
Lore Green	Assistant Stage Manager
Andrea Handal Rivera	Apprentice Stage Manager
Caitlan Argueta	Production Assistant
Jenna Kerekes	Production Assistant

VENUE Shoctor Theatre

AGE RECOMMENDATION 8+

RUN TIME Approximately 2 hours

INTERMISSION 15 minutes

SYNOPSIS The Cornley Drama Society tries to mount a production of J.M. Barrie's fantastic tale Peter Pan but anything that can go wrong, well, does. You've never seen anything like this brilliant display of sheer comedic mayhem.

SPECIAL THANKS TO The generous support of Canadian Actors' Equity Association, William Stewart, Tom & Terrie Stewart, Jon & Judy Rodgers, Graham Andrews, and the UofA Drama Department's Costume Shop

PETER PAN GOES WRONG was first presented by Mischief Theatre on 10th December 2013 at the Pleasance Theatre, London.

PETER PAN GOES WRONG by Henry Lewis, Jonathan Sayer & Henry Shields © 2013 Mischief Worldwide Ltd.

PETER PAN GOES WRONG, Mischief and Mischief Theatre are trademarks of Mischief Worldwide Ltd. All rights reserved.

This production is presented under licence from Mischief Worldwide Ltd.

FOR MISCHIEF WORLDWIDE

Directors: Mark Bentley, Jonathan Burke,
Henry Lewis, Kenny Wax

Executive Director: Jo Danvers

International Production Coordinator: Jessica Hall



Marketing Manager: Harry
Lockyear

Production & Administrative
Assistant: Minoli De Silva

**For information about
rights in all Mischief
Theatre works, please visit:
mischiefworldwide.com**

A SPECIAL THANK YOU TO

bluewave

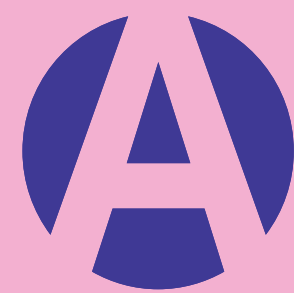
A Transformative Law Firm

and Jenna Kirk for their support with bringing
Peter Pan Goes Wrong to Canada!

The Arts Club Theatre Company is proud to partner with the Citadel Theatre for this production of *Peter Pan Goes Wrong.*

The Arts Club, the largest not-for-profit urban theatre company in Canada, is the principal gathering place for the theatrical arts in British Columbia. Comprising three unique venues across Vancouver, the Arts Club welcomes more than a quarter million guests annually, tours provincially and nationally, and engages students and artists alike through educational and professional programs.

Above all, the Arts Club is dedicated to the advancement of local artists telling stories from around the globe and, in particular, those of our region. From this, we believe that culture expands, an understanding of differences is nurtured, and art bursts forth.



ARTSCLUB
ALIVE ON THREE STAGES

WELCOME TO *PETER PAN GOES WRONG!*

Our production of *Peter Pan Goes Wrong* started rehearsals in March 2020. The cast had three days of rehearsal before COVID-19 forced us to close. Over the past two years we have scheduled and re-scheduled and re-re-scheduled this production so many times, each time with the hope that we would finally get the chance to share this fantastic production with you. And now, finally, it is time!

We're proud to present the North American premiere of this fantastic production by Mischief. Mischief's first production, *The Play That Goes Wrong*, is a huge hit in the UK and on Broadway. It tells the story of a well-meaning community theatre trying desperately to produce a play in spite of constant (hilarious) obstacles. *Peter Pan Goes Wrong* is Mischief's extremely funny follow-up production in which the community theatre gathers again to attempt to produce *Peter Pan*.

The Citadel is working closely with Mischief to present the North American premiere of *Peter Pan Goes Wrong*. You are the first audience in North America to see this production. We're so excited that Adam Meggido, the director of the original UK production, has joined us at

the Citadel to direct a very funny, all-Canadian cast. Big thanks too to our partners at the Arts Club Theatre Company in Vancouver, where the production travels next.

While we are so excited to gather again, we value the safety of our audience, artists and staff above all. Our staff has been working tirelessly to implement COVID-19 safety protocols throughout rehearsal and performances to ensure everyone is safe and comfortable returning to the theatre. If you have any comments or questions, feel free to reach out to us directly.

We are so thrilled to finally welcome you to see this incredible show. Thank you so much for waiting – it is so great to see you!

ENJOY THE SHOW!



A handwritten signature in black ink, appearing to read 'Daryl Cloran'.

Daryl Cloran

ARTISTIC DIRECTOR

dcloran@citadeltheatre.com



A handwritten signature in black ink, appearing to read 'Sarah Pocklington'.

Sarah Pocklington

EXECUTIVE DIRECTOR

spocklington@citadeltheatre.com

Edmonton
5050
Arts

www.edmontonarts5050.ca

Buy Now.



art gallery of alberta

THE
CITADEL
THEATRE



EDMONTON
SYMPHONY
ORCHESTRA

Lottery Licence: 580509

Sparking creative minds and powering a bright future

Welcome back to the Citadel's in-person performances. We're proud to be the 2021-22 Season Sponsor.

Capital Power

RESPONSIBLE ENERGY
FOR TOMORROW



capitalpower.com



MEET THE PLAYWRIGHTS



HENRY LEWIS

Henry (he/him) is an Olivier Award winning writer, actor and producer and is the artistic director of Mischief. Henry's work has been produced in over 40 countries worldwide. Henry's

recent credits include: *The Valiant Quest of Prince Ivandoe* (actor - Cartoon Network), *Mischief Movie Night-In* (format co-creator/actor/producer - live stream), *Magic Goes Wrong* (writer/actor – West End/Lowry, Nominated for Best New Entertainment or Comedy Play - Olivier Awards 2020 and Best New Play - What's On Stage Awards 2022 and co-created with magicians Penn & Teller), *The Goes Wrong Show* (writer/actor – BBC1), *Groan Ups* (writer/actor - West End), *Mischief Movie Night* (format co-creator/actor – West End & UK Tours - nominated for Best New Comedy - Olivier Awards 2018), *The Comedy About A Bank Robbery* (writer and actor West End/UK Tour – nominated for Best New Comedy at the Olivier Awards 2017), *The Play that Goes Wrong* (writer/actor West End/Broadway, UK/International Tours – Winner of Best New Comedy at the Olivier Awards 2015 and What's On Stage Awards 2014), *Peter Pan Goes Wrong* (writer/actor – BBC1/West End/ UK Tour/

Pleasance London – Nominated for Best New Comedy - Oliver Awards 2016) *A Christmas Carol Goes Wrong* (writer/actor - BBC1). Henry has also performed at The Royal Variety Performance 2015 & 2019 (ITV1), *We are Most Amused and Amazed: Prince Charles' 70th Birthday Celebration* (ITV1) *Keep it in the Family* (ITV1), *Children in Need 2020* (BBC1). Outside of Mischief Henry produced and performed in the critically acclaimed West End revival of Philip Ridley's *Mercury Fur* and produced the UK premier of Tracy Letts' *Superior Donuts*. Henry is also the creator and founder of *The Mystery Agency*. @henrywlewis



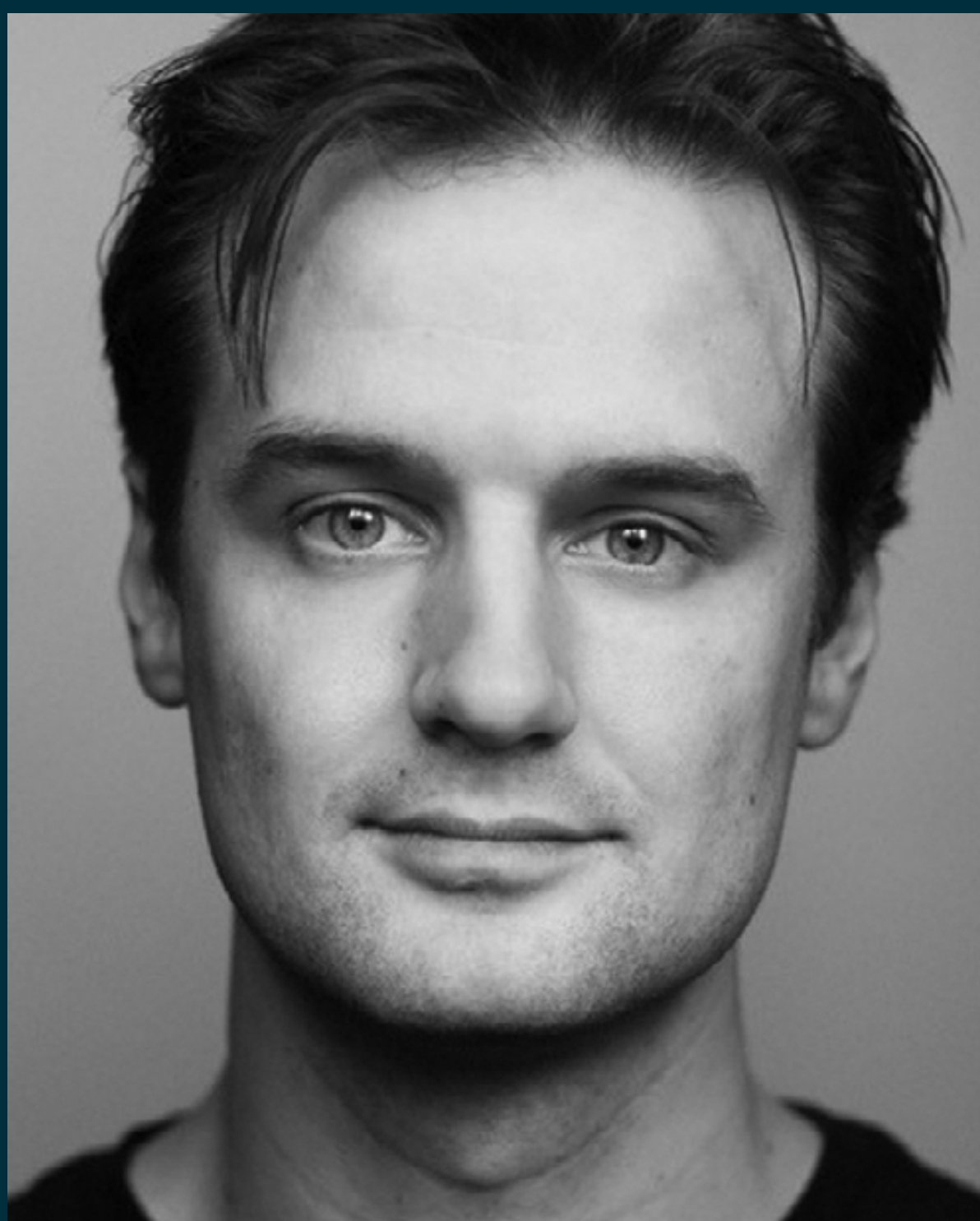
JONATHAN SAYER

Jonathan is an Olivier Award-winning writer and the company director of Mischief Theatre working as a writer, actor, and producer. Jonathan trained at LAMDA.

Select theatre credits

include: *The Comedy About a Bank Robbery* (Criterion Theatre - nominated Best New Comedy Olivier Award 2017), *The Play That Goes Wrong* (West End, U.K. and International Tour - writer/actor, Olivier Award and WhatsOnStage Award Best New Comedy), *Peter Pan Goes Wrong* (West End, U.K. tour, Pleasance, London - writer/actor), *The Nativity Goes Wrong* (writer, Mischief Theatre and Reading Rep co-production), *Lights!*

Camera! Improvise! (Pleasance, Edinburgh, Soho Theatre, Arcola, Underbelly and Krakow Improfest - actor, improviser, producer, Spirit of the Fringe Award 2013), *Rachael's Café* (Old Red Lion - general manager), and *Happy Birthday Simon* (Orange Tree - actor). Television credits include: *Peter Pan Goes Wrong* (BBC1), *Royal Variety Performance 2015 - The Play That Goes Wrong*, *A Life Less Ordinary* (pilot), and *The Anti-Social Network* (actor). Radio credits include: *Not a Love Story* (BBC Radio 4 - actor). Jonathan teaches improvisation and has taught at LAMDA, Mountview, and Cambridge School of Visual and Performing Arts (CSVPA).



HENRY SHIELDS

Henry trained at LAMDA. He is an Olivier award-winning writer and has been a member of Mischief Theatre since 2009.

Select theatre credits include: *The Play That Goes Wrong*

(writer/actor, winner 2015 Olivier Award and WhatsOnStage Award for Best New Comedy), *Peter Pan Goes Wrong* (writer/actor, 2016 Olivier Award nominee for Best New Comedy), *The Nativity Goes Wrong* (writer), *The Comedy About a Bank Robbery* (writer/actor), and *The Busy Body* (Southwark Playhouse). Television credits include: *Peter Pan Goes Wrong* (BBC1), and *A Christmas Carol Goes Wrong* (BBC1).

Cultivating community, connection,
and inspiring our youth.

Proud sponsors of the Citadel Theatre Young Companies



FOR THE LOVE OF THE SHOW.



There is nothing like live theatre. As soon as the lights go down, the transformation begins, and you are taken to another place beyond your everyday reality. Enjoy your escape.

WITH LOVE FROM

EPCOR



WELCOME!

The Shoctor Theatre is now equipped with a cutting-edge Hearing Loop system! This is a momentous milestone in our ongoing work towards universal accessibility. This project was made possible with a significant contribution from the Shoctor Family, community donations, and the support of Hearing Loops Canada. Thank you to our generous partners who help make the Citadel a place where everyone can belong!



ALEXANDER ARIATE DENNIS

Alex is an actor and stage clown making his Citadel debut this year. Previous credits include: *A Christmas Carol* (Theatre Calgary); *The Merchant of Venice*, *The Tempest*, *Othello*, *Twelfth Night*, and *The Winter's Tale* (The Shakespeare Company); *Might As Well Be Dead* (Vertigo Theatre); *The Two Gentlemen of Verona* and *The Comedy of Errors* (Shakespeare by The Bow/Theatre Calgary). Film & Television: *Fortunate Son* (CBC)

Alex would like to thank his family, friends, and his loving girlfriend for their constant support and love. As always, he dedicates each performance to his Mom and Dad.



**APRIL
BANIGAN**
FRANCIS

April is an actor, director and drama instructor. Theatre credits include *The Constant Wife*, *Death of a Salesman*, *A Christmas Carol*, *The Silver Arrow* (Citadel), *The Beginning of August* (Shadow); *My One and Only* (Workshop West); *Silence* (NLT); *E-Day* (Serial Collective) and *Fever Land* (Teatro). Film/TV credits include *Alfred Hitchcock Presents*, *Media Sense* and *A Louder Silence*. April directed the V/O for *The Great Human Odyssey*, *The Perfect Runner* and *Equus*; *Story of the Horse* (CBC – The Nature of Things). Big love to her boys Sean, Jezec and Avram.



ALEXANDRA BRYNN

SANDRA

This is Alexandra's Citadel Debut. Other Theatre: *The Hollywood Special Effects Show* (U.K. National Tour, U.S.A. Tour, and U.A.E.). Film & TV: *Blue Peter*, *Star Wars Battlefront II* (voiceover). Training: MA in Acting (The Guildford School of Acting) UK, BFA Theatre Performance (Concordia University).

Thank you to my family for all of their love and support and to everyone at Talent House for keeping me sane over this two-year hiatus. This one's for you, Poppa!



**JAMIE
CAVANAGH**
JONATHAN

Citadel: *Venus in Fur*, *Romeo and Juliet*, *A Christmas Carol*, and *Death of a Salesman*. Other Theatres: *The Great War*, and *Confederation Parts I and II* (VideoCabaret/Soulpepper); *The Greatest Musical Never Written* (Kliffer Entertainment/West Side Theatre [NYC]); *The Huns* (Crows Theatre), *Ministry of Mundane Mysteries* (Outside the March). Recent film/series credits include: *Salt-N-Pepa* (Lifetime), *Wild James* (ActionCan Films), *Departure* (Global/BBC), *Wayne* (Youtube Red), *Book Hungry Bears* (TVO Kids), *Rider's Republic* (Ubisoft) Other: Jamie is a Dora Award winning actor and an alumni of the BFA Acting program at the University of Alberta and the 2014 Citadel Theatre/Banff Centre Program.



**CHRIS
COCHRANE**
ROBERT

This is Chris' Citadel debut. Other Theatre: *Once, Avenue Q, King Charles III, Peter and the Starcatcher, The Waiting Room, She Stoops to Conquer* (Arts Club); *Much Ado About Nothing, The Winter's Tale, Measure for Measure, Elizabeth Rex* (Bard on the Beach); *Urinetown* (Firehall); *The Flick* (itsazoo/BlueBridge). Film & TV: *Supernatural, iZombie, Supergirl, Fringe, Riverdale*. Chris is a graduate of the Stella Adler Studios (NYC) and Studio 58, and has been nominated for two Jessie Richardson Theatre Awards.

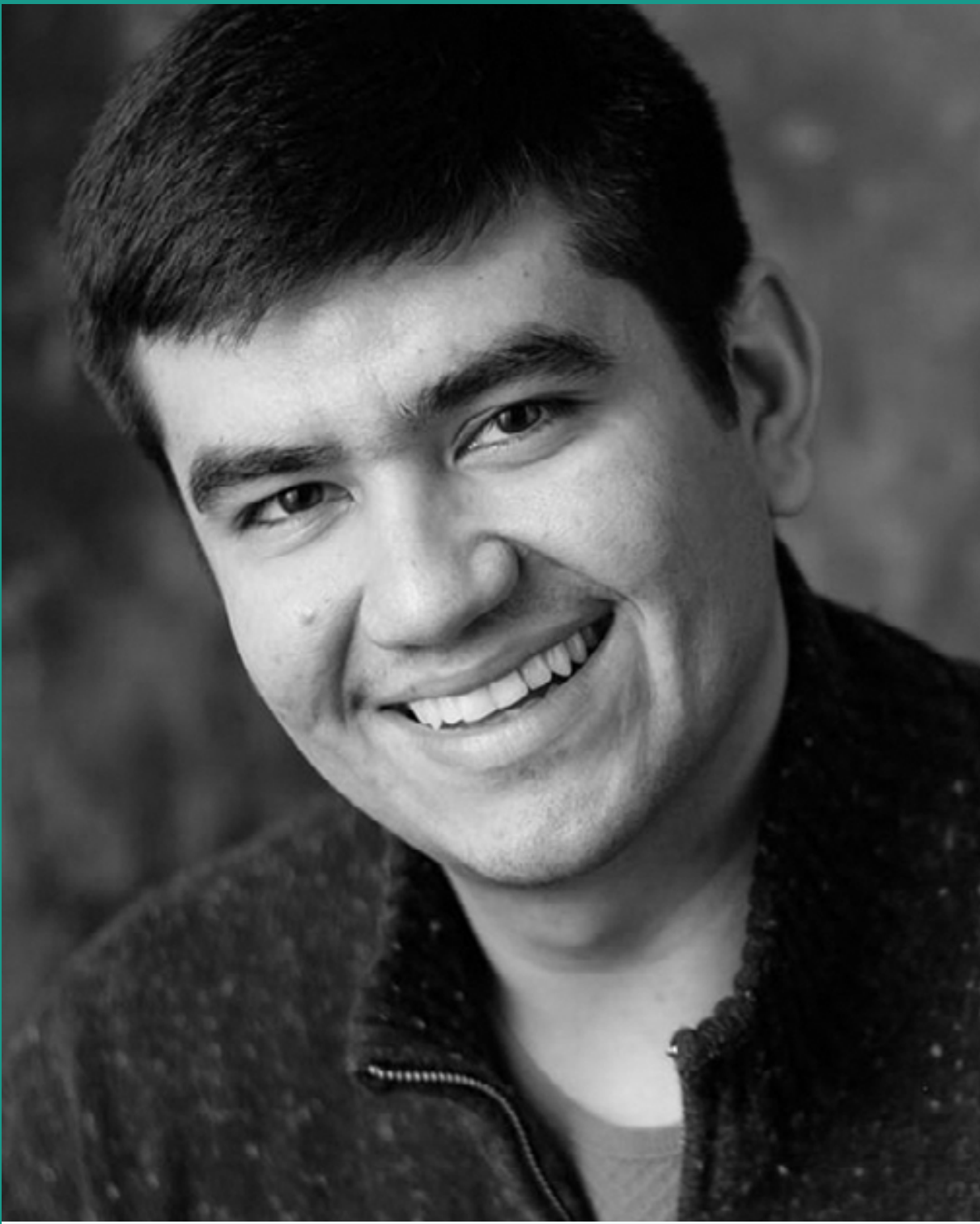


BELINDA CORNISH

ANNIE

Belinda is an actor and playwright based in Amiskwaciwâskahikan (Edmonton). Acting credits include: *A Christmas Carol* (Citadel Theatre); *Julius Caesar, Romeo & Juliet* (Freewill Shakespeare Festival); *The Exquisite Hour, Witness To A Conga* (Teatro La Quindicina); *Fallen Angels, No Exit* (Bright Young Things). Playwright credits include: *The Garneau Block* (Citadel Theatre); *Category E* (The Maggie Tree, Coal Mine Theatre); *Little Elephants* (Shadow Theatre). Voice Over includes: *Mass Effect series, Dragon Age series* (Bioware). Belinda is a co-Artistic Director with Teatro La Quindicina, and a passionate volunteer with WILDNorth wildlife rescue.

Thank you to Mark Meer and Adam Meggido.



GABRIEL COVARRUBIAS

CORNLEY CREW B

UNDERSTUDY:

DENNIS, MAX,

CORNLEY CREW A

From Mexico City (Nahua Territory) living now in Vancouver (Coast Salish Territory) with a 12-year career as an actor, Gabriel (he/him) is absolutely stoked to be part of *Peter Pan Goes Wrong* and work with Citadel Theatre on Treaty 6 Territory. Recent credits: Caldwell B. Cladwell (*Urinetown The Musical* - Studio 58), Ali (*Anon(ymous)* – Studio 58), Mardian (*Antony & Cleopatra* – Studio 58), Mateo - Ensemble (*Mamma Mia!* – Theatre Under the Stars), and Ensemble/co-creator (*Risky Nights: SEEN* – Studio 58). Co-Author of short play *Les Patisseries Sauvages* (Hot House at Studio 58).

Gabriel would like to give eternal thanks to his family for their absolute support and unconditional love: Mamá, Papá, and Sofía, always and forever. Infinite thanks to Arlene Kanigan, Matthew Best, Brooke Best, Liam Kanigan and Claire Kanigan for hosting and welcoming into your home. Shout out to my agent Josh Drebit at Kirk Talent. And of course perpetual thanks to the whole cast and crew of *Peter Pan Goes Wrong* and members of Citadel Theatre, what a sheer joy and pleasure to theatre in this particular time.



ANDREW COWNDEN

UNDERSTUDY:

CHRIS, ROBERT,
TREVOR, JONATHAN,
CORNLEY CREW B

Andrew is an actor and writer based out of Vancouver, BC. This is his debut production with the Citadel. Previous Credits Include: *Dolly Parton's Smoky Mountain Christmas Carol* (Arts Club Theatre Co.); *Shakespeare in Love* (Bard on the Beach); *Cabaret* (Royal City Musical Theatre); *42nd Street* (Theatre Under The Stars).



OSCAR DERKX MAX

Oscar Derkx is an actor and musician based here in Edmonton. Selected credits: *As You Like It* (RMTC/Citadel Theatre); *Peter and the Starcatcher*, *Once*, *A Christmas Carol* (Citadel Theatre); *Two Gentlemen of Verona*, *The Winter's Tale* (Freewill Shakespeare Festival); *Lost Lemoine* (Teatro La Quindicina); *Suburban Motel Series* (Punctuate Theatre); *The Antyssey* (Concrete Theatre); *Ride* (Lunchbox Theatre). Upcoming: *Peter Pan Goes Wrong* (Arts Club); *Evelyn Strange* (Teatro La Quindicina).



SEBASTIAN KROON

TREVOR

This is Sebastian's Citadel debut. Other Theatre credits include: *Jabberwocky*, *Famous Puppet Death Scenes* (Old Trout Puppet Workshop); *Merchant of Venice*, *As You Like It* (Bard on the Beach); *She Stoops to Conquer* (Arts Club); *In the Next Room* (Ensemble Theatre); *A Doll's House* (Slamming Door); *The Glass Menagerie* (Ignition Theatre); *The Odd Couple* (Main St Theatre); *Of Mice and Men* (Hardline). Film & TV: *Superman and Lois*, *Big Sky*, *Chilling Adventures of Sabrina*, *Supernatural*, *The Magicians*, *Deadly Class*, *Arrow*.

Love to Squish.



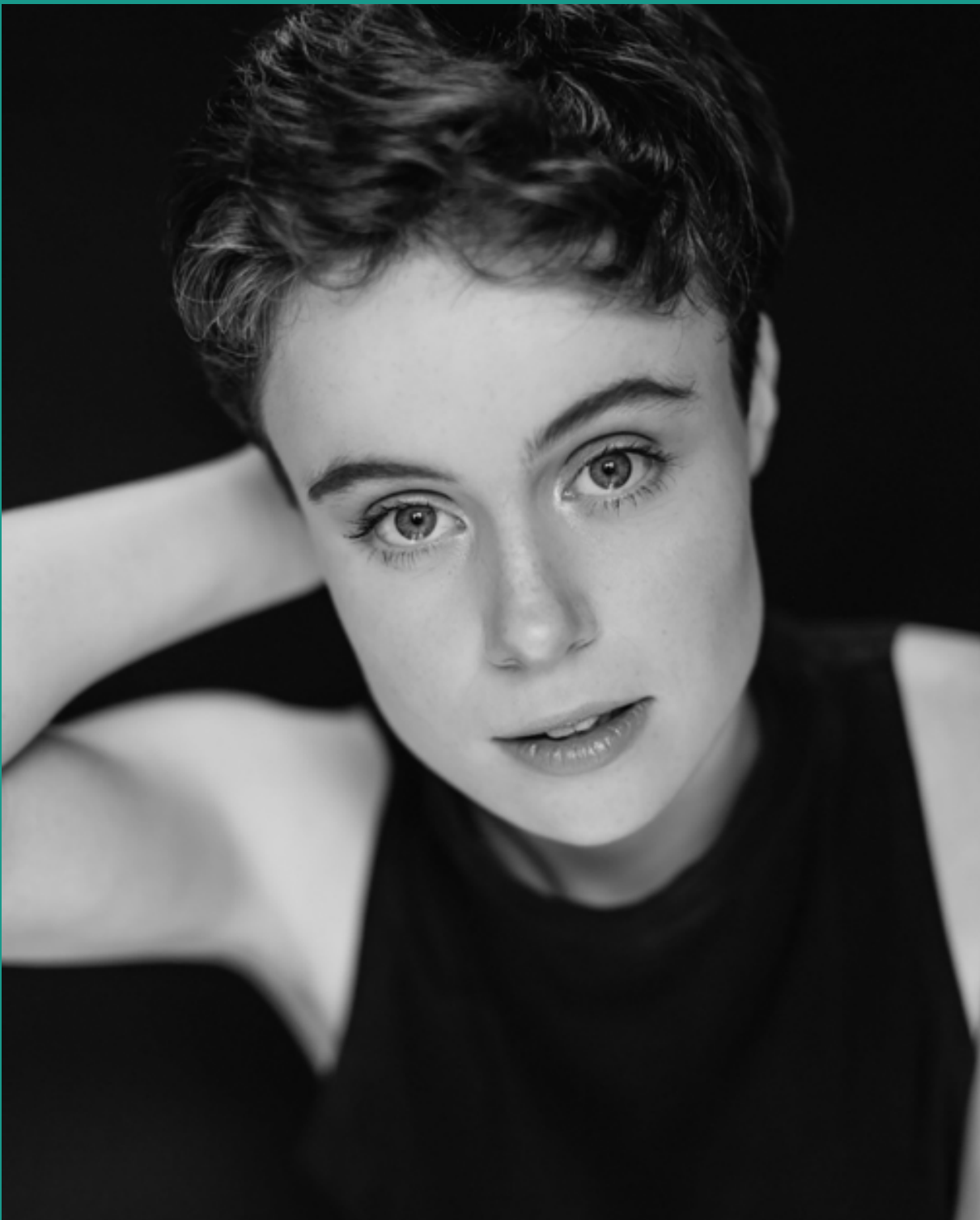
ROCHELLE LAPLANTE

LUCY

UNDERSTUDY:
SANDRA

Rochelle Laplante (she/her) is overjoyed to be making her Citadel Theatre debut! She is an Edmonton raised actor, dancer and musician who has always loved to tell stories and perform. She co-created a choreopoem called *Homegrown* which was part of last year's Nextfest Festival. She is a former student of the Young Musical Company at the Citadel and a graduate of The National Theatre School of Canada. Previous Credits Include: *Macbeth* (Freewill Shakespeare), *Hiraeth* (Bright Young Things), *Hoodies* (Concrete Theatre), *The Importance of Being Earnest* (Empress of Blandings).

Thank you to The Laplantes, Babiaks and Jasper.



CAMILLE LEGG

CORNLEY CREW A
UNDERSTUDY:
LUCY, ANNIE,
FRANCES

Camille Legg is an actor and improviser based on the traditional, ancestral, and stolen lands of the Musqueam, Squamish, and Tsleil-Waututh Nations (colonially called Vancouver, BC, Canada). This production of *Peter Pan Goes Wrong* is Camille's Citadel debut! Their previous theatre credits include: *Like It Or Not* (Green Thumb Theatre); *Three Winters* (The Cultch); *Land of Trash* (Green Thumb Theatre); *The Hunger Room* (Staircase Theatre); and *The Wolves* (Stone's Throw Productions). Camille also acts on screen in *Family Law*, *Riverdale*, *The Detour*, and in the upcoming movie, *The Last Victim*.

Camille would like to thank their agent, friends, family, and mentor for all of their continuous support. They would also like to thank the production team, artistic team, cast, and crew of *Peter Pan Goes Wrong* for their generous hearts and dedicated work.



ANDREW MACDONALD- SMITH

CHRIS

Andrew is an actor, producer, and puppeteer. He is also the Co-Artistic Director of Edmonton theatre company, Teatro La Quindicina. Previous Credits Include: *Matilda, Crazy for You, Shakespeare in Love, Mary Poppins, Avenue Q, One Man, Two Guvnors* (Citadel); *Fever Land, Witness to a Conga, Pith!* (Teatro); *Best Brothers, The Comedy Company* (Shadow); *Forever Plaid, Shear Madness, Wizard of Oz* (Mayfield); *Avenue Q, Matilda* (Arts Club); *Dirty Rotten Scoundrels, Crazy for You, Mary Poppins* (Theatre Calgary). Many thanks and love to Mum and cuore mio Louise. For Dad.

Emery Jamieson LLP is the proud
production sponsor of The Citadel
Theatre's *Peter Pan Goes Wrong*



EMERY
JAMIESON
LLP

emeryjamieson.com



**THE DIFFERENCE
SURROUNDS YOU.**

Allard Foundation

A LEGACY OF CARING

ARTS & CULTURE. It inspires and challenges us to explore new ideas. That's why we entertain funding for the arts.

Dr. Charles Allard was determined to create an organization that would enhance, enrich and build a strong community specifically through support of health, education, family and arts programs. Today, we enjoy the benefits of his vision. Tomorrow, others will too.

DID YOU KNOW...

The Citadel Theatre is a registered charity? We rely on the support of our incredible community to help us continue to offer relevant and entertaining performances on our stages and life-changing opportunities to artists of all ages and abilities through our educational programming. Please help us continue to enrich the cultural fabric of Edmonton by donating today at citadeltheatre.com!



**THE
CITADEL
THEATRE**



**ADAM
MEGGIDO**
DIRECTOR

Adam is a director, writer, and improviser, based in London. He is currently writing on a new show for HBO. This is Adam's Citadel Debut. Other Theatre: *Magic Goes Wrong* (2020 Olivier Award Nomination for Noel Coward Award for Best Entertainment or Comedy Play); *Mischief Movie Night* (2018 Olivier Award Nomination for Best New Comedy); *Showstopper! The Improvised Musical* (2016 Olivier Award Winner for Best Entertainment & Family Show); and *Peter Pan Goes Wrong* (2016 Olivier Award nominee for Best Comedy Play).

www.adammeggido.com

twitter @adammeggido



**ROB
FALCONER**
COMPOSER

Theatre includes: Stanley/Mr Williams in *School of Rock* (West End), Trevor in *The Play That Goes Wrong* (Broadway/West End/International tour), Sir Jasper DeVille in *Red Riding Hood* (New Wolsey Theatre), Tinbad the Tailor in *Sinbad the Sailor* (New Wolsey Theatre), Baygon in *Slow Falling Bird* (Arts), Tybalt in *Romeo and Juliet* (Watermill Theatre), Sir Kay in *Sword in the Stone* (New Wolsey Theatre), Trevor in *Peter Pan Goes Wrong* (Pleasance Theatre) and Bull Bill in *Cool Hand Luke* (Aldwych).

Music credits (MD/AMD/Designer/Composer) include: *The Last Curiosity*, *Las Americas Above Festival* (Arts Theatre – Slow Falling Bird, Mothergun, Desert Rats, Human Emotional Process), *The Play That Goes Wrong*, *Peter Pan Goes Wrong*, *Cool Hand Luke*, *Playboy of the Western World* and *Lights! Camera! Improvise!*



RICHARD BAKER

COMPOSER

Richard is a freelance musical director, qualified teacher, vocal coach, composer and improviser. Richard trained at LAMDA on the MD course, and credits while in training included: *City of Angels* at the Hammersmith Lyric; *The Last 5 Years* at the Nursery Theatre; *Much Ado About Nothing* at the Riverside Studios, directed by Dame Janet Suzman. He is an audition pianist and vocal coach, and has worked at various drama schools including LAMDA, Rose Bruford and the Urdang Academy. He is an MD/repetiteur for the company Opera Anywhere, and has worked at the Old Vic Tunnels, the Islington Pleasance, Buxton Opera House and Royal Festival Hall.



STEVEN GREENFIELD

MUSIC DIRECTOR

Born and raised in Mohkínstsis (Calgary), and now proudly calling amiskwacîwâskahikan (Edmonton) home, Steven (he/him) is a Jessie Award-winning music director, musician and actor, with credits that span over 90 productions across Canada. Recent credits include *A Christmas Carol*, *Ring of Fire* and *Once* (Citadel), *Into the Woods* (MacEwan), 'Max' in *Lend Me a Tenor* (Mayfield), and 'Jerry Lee Lewis' in *Million Dollar Quartet* (Arts Club). Upcoming: *Tune to A* (Expanse/Azimuth), *Million Dollar Quartet* (Theatre Calgary), *Ring of Fire* (Aquarius), *ELVIS* (Citadel), and *The Wrong People Have Money* (Shadow).



**SIMON
SCULLION**
SET DESIGNER

Simon trained at Wimbledon School of Art and was a finalist on the Linbury Prize for Theatre Design. Previous credits include: *Peter Pan Goes Wrong* (London West End and UK tour), *Showstopper!* (London West End), *The Father* (Belgrade Theatre, Coventry), *Quatermaine's Term* (UK Tour), *Peppa Pig* (UK tour), *And Then There Were None* (UK tour), *Killer Joe* (Edinburgh Festival). Simon also works in Film and TV. Recent credit include: *Bill* (BBC Films/British Film Institute) and *Madonna and Basquiat* (Sky Arts).

Many thanks to all at the Citadel for making me so welcome and to Kenny Wax, Mark Benson and all the Mischief team for keeping faith in this production.



ROBERTO SURACE

COSTUME DESIGNER

Roberto originates from Melbourne Australia where he trained at the Victorian College of the Arts (VCA) gaining a BA in Dramatic Art (Production). Broadway costume designs include: *The Play That Goes Wrong* (Lyceum). West End costume designs include: *The Comedy About A Bank Robbery* (Criterion), *Peter Pan Goes Wrong* (Apollo) and *The Play That Goes Wrong* (Duchess). Off West End costume designs include: *SIX* (Arts), *Lily Aitkinson at the St James* (St James) and *The Trial of Jane Fonda* (The Park). UK tour costume designs include: Agatha Christie's *And Then There Were None* and *Peter Pan Goes Wrong*. International: *The Play That Goes Wrong* (Budapest, Rome, Australia, Hong Kong and New Zealand). Television: *A Christmas Carol Goes Wrong*, *Peter Pan Goes Wrong* and *The Goes Wrong Show* (BBC1). Other costume designs were seen at West End Eurovision where he designed costumes for entries by Top Hat and Les Misérables. Theatre includes: Costume Supervisor on *Peter Pan* (Regent's Park Open Air Theatre) and *Top Hat* (2014/2015 UK tour and Japan).



MATT HASKINS

LIGHTING DESIGNER

Matt is an international lighting designer working in theatre, opera, site specific, concert and corporate environments. Theatre credits: *Death of a Salesman* (UK Tour); *Roundelay* (Southwark Playhouse); *Peter Pan Goes Wrong* (Apollo Theatre West End); *Aladdin* (Salisbury Playhouse); *Kiss Me* (Hampstead Theatre & Trafalgar Studios); *Nina* (Unity Theatre, Riksteatren & Young Vic); *Last Five Years* (New Wolsey Theatre); *Much Ado About Nothing* (Queens Theatre Hornchurch); *The House of Mirrors & Hearts* (Arcola Theatre); *Crocodiles* (Manchester Royal Exchange); *1001 Nights & The Edge* (Transport Theatre/ Unicorn Theatre/ New Wolsey); *Wind in the Willows, The Years Between* (Royal & Derngate); *Truth & Reconciliation* (The Royal Court); *Dream Story, Mud* (Gate Theatre); *Steel Magnolias* (Bath Theatre Royal/ UK Tour). Matt holds a BA (Hons) in Lighting Design. In 2008, Matt was nominated for a Knight of Illumination Award.



**JEFF
OSTERLIN**
ASSOCIATE
LIGHTING DESIGNER

Jeff can be usually found behind the scenes at the University of Alberta Drama Department, as the Lighting Supervisor. During Covid, Jeff got to work with Patricia Darbasie with *Heaven* by Cheryl Foggo at The Citadel Theatre and *The Mountian Top* by Katori Hall for Shadow Theatre at Varscona Theatre. Before Covid, Jeff worked on *THE INVISIBLE – Agents of Ungentlemanly Warfare* (Catalyst/Vertigo Theatre) as the Associated Projection Designer. Other lighting designs: Shumka's world premiere of *Mosquitos Wedding* and *Ancestors and Elders*, and *Shumka's Nutcracker*. (Northern Alberta Jubilee Auditorium, Royal Theatre - Victoria).



ELLA WAHSTRÖM

SOUND DESIGNER

Ella is a London-based Sound Designer and trained at Rose Bruford. She's an original sound operator of Complicite's *The Encounter* and a Co-Sound Designer of Robert Wilson and Mikhail Baryshnikov's *Letter to a Man*. Theatre Sound Design credits include: *Kite* (The Wrong Crowd), *Black & White*, *Arashi No-Ie* (59 Productions Ltd.), *End of the Pier* (Park Theatre), *Jellyfish* (Full Fathom Productions), *This Restless State* (Fuel Theatre), *Trying it On* (China Plate), *Cuttin' It* (Royal Court, Secondary Schools Tour), *Of Kith and Kin* (Sheffield Theatre, Bush Theatre), *Wing on Wing* (New York Philharmonic), *Letter to a Man* (Change Performing Arts), *Salonen Cello Concerto* (Chicago Symphony Orchestra/New York Philharmonic/LA Philharmonic), *Three Generations of Women* (Broken Leg Theatre, Greenwich Theatre), *The Life* (English Theatre Frankfurt), *The Ballad of Robin Hood* (Tacit Theatre, Southwark Playhouse), *The Bunker Trilogy*, *The Frontier Trilogy* and *The Capone Trilogy* (Jethro Compton, Edinburgh Fringe and international touring), *Empty Vessels* (Rosemary Branch Theatre) *Sirenica* (Jethro Compton, Edinburgh Fringe), *Klippies* (Southwark Playhouse), *Chicken Dust* (Finborough Theatre) *In Lambeth* (Spellbound Productions, Southwark Playhouse), *Carroll: Berserk* (Spindrift Theatre, Drayton Arms Theatre), *A Study in Scarlet* (Tacit Theatre, Southwark Playhouse), *Titus Andronicus* (Hiraeth, Arcola), *Romeo and Juliet* (Hiraeth, Upstairs at the Gatehouse), *Theatre Uncut* (Theatre Uncut, Young Vic), *The Revenger's Tragedy* and *Henry V* (Old Red Lion Theatre).



**OWEN
HUTCHINSON**
ASSOCIATE
SOUND DESIGNER

Owen is a graduate of the Theatre Production program at Grant MacEwan University, and has been nominated for 3 Sterling awards for his production and design work. Selected design credits include: *Arcadia*, *Sense and Sensibility*, *Million Dollar Quartet* and *Make Mine Love* (Citadel Theatre, Edmonton), *As You Like It* (Chicago Shakespeare Theatre) and *Drowsy Chaperone* (Citadel and National Arts Centre, Ottawa). Operation credits include out of town tryouts of Broadway hits *Hadestown*, and *Six*. Owen would like to thank Christy, Theo, Amos, Doug and Hanna for their support.



**CHRISTINE
BANDELOW**
CHOREOGRAPHER

Christine is a choreographer and performer. Previous credits include *Buddy-The Buddy Holly Story, Sister Act, Hair, Little Shop Of Horrors* (Mayfield Theatre); *Bittergirl* (Citadel Theatre/Confederation Centre Of the Arts); *One Man,Two Guvnors* (Citadel Theatre); *I Love You, You're Perfect, Now Change* (Neptune Theatre); *Inferno* (Firefly Theatre & Circus); *City Of Angels, Legally Blonde* (MacEwan University); *Hello...Hello* (Kill Your Television); *Rent* (Mirvish Productions, Mexico City, Barcelona, Montreal and US National Tour).



**AINSLEY
HILLYARD**
ASSISTANT
CHOREOGRAPHER

Ainsley Hillyard is an Amiskwacîwâskahikan (Edmonton)-based artist of settler descent. She is a choreographer, performer and educator who works in contemporary dance and theatre. Select choreography credits include; *Mr. Burns: A post electric play* (You are Here theatre and Blarney Productions) Sterling nomination for Outstanding Choreography, *Bears* (Pyretic Productions) Sterling Award for Outstanding Choreography; *Ursa Major* (Catch The Keys Productions) Sterling nomination for Outstanding Choreography, and assistant choreographer for *Hadestown* (Citadel Theatre). Ainsley enjoys long walks with her French bulldog Jezebel and reading sci-fi.



JANINE WADDELL

FIGHT DIRECTOR/
STUNT COORDINATOR

Janine is an Edmonton based Intimacy and a Sterling nominated Fight Director, as well as an Intimacy Coordinator and Stunt Performer. Previous Citadel and Young Company Credits Include: *The Fiancée*; *The Curious Incident of the Dog in the Night-Time*; *After Juliet*; *Midsummer Night's Dream*; *Bat-Boy: The Musical*. Previous Theatre Credits Include: *Simone et le Whole Shebang* (L'UniThéâtre); *MacBeth* (The Malachite Theatre Collective). Film Credits Include: *Under the Banner of Heaven* (FXP, Imagine Television); *Billy the Kid* (MGM International); *Black Summer* (Netflix); *The Ballad of Audrey Earnshaw* (Gate 67 Films). She is the lucky mother of four.



SAMARA VON RAD

STUNT COORDINATOR

Samara is an Aerialist and Instructor at Firefly Theatre and Circus, an Actor/ Stunt Performer for Film and TV and a musician based in Edmonton. Samara is incredibly excited for her first collaboration with the Citadel. Previous Aerial credits include: *Inferno*, *Kolabo*, *Let There Be Height* (Firefly Theatre and Circus). Previous Stunt credits include: *Black Summer* (Netflix), *A Frosty Affair* (12. Pt Media). Previous Acting Credits include: *Heartland* (CBC), *Prosecuting Casey Anthony* (FOX) Samara's music can be found on all streaming platforms.

Thank you to Annie Dugan and Adrian Young.



**KAREN
JOHNSON-
DIAMOND**
ASSISTANT DIRECTOR

Karen is an award-winning actor, improviser and director based in Calgary. She is also the co-founder of Calgary's improvisation company Dirty Laundry. Previous credits include (as director): *Miss Caledonia* and *Time Present* (Lunchbox Theatre), *A Christmas Carol* and *Footloose* (Keyano Theatre), *A New Brain* and *New Canadian Kid* (Storybook Theatre). (As actor): *A Christmas Carol*, *Noises Off*, *The Crucible* (Theatre Calgary); *The Year of Magical Thinking* (Sage Theatre). Karen loves her son Griffin, her husband Kevin and Neil Diamond.



**MICHELLE
CHAN**
STAGE MANAGER

Michelle is the resident stage manager at The Citadel Theatre and has been privileged to be working with the amazing team here for the last 21 seasons. Some of her favourite past Citadel Theatre credits include: *A Christmas Carol, Every Brilliant Thing, Ring of Fire, Once, The Silver Arrow, Shakespeare in Love, West Side Story, Avenue Q, One Man, Two Guvnors, Spamalot, Private Lives, Beauty and the Beast, A Few Good Men, The Sound of Music, The Rocky Horror Show, August: Osage County, The Forbidden Phoenix, Sweeney Todd, Heaven and Mary's Wedding.*

Huge Thanks to Lore and Andrea!



**LORE
GREEN**
ASSISTANT
STAGE MANAGER

Lore holds a BFA in stage management from the UofA and is thrilled to be back doing what she loves. Previous credits include: *A Christmas Carol*, *West Side Story*, *Curious Incident of the Dog in the Night-Time*, *Sense & Sensibility*, *Hadestown*, and *Silver Arrow: The Untold Story of Robin Hood* (Citadel Theatre); *Timothy Findley's The Wars*, *Mamma Mia!* and *Titanic: The Musical* (Grand Theatre); *Barvinok* and *Michael Mysterious* (Pyretic Productions). Thank you for supporting live theatre!

Thank you to Patrick Lundeen, Lianna Makuch and John & Diane Green.



**ANDREA
HANDAL RIVERA**
APPRENTICE
STAGE MANAGER

Andrea (she/they) is a Latine stage manager and arts administrator from El Salvador and based in Treaty 6 Territory. Select credits: *Convergence* (Good Women Dance Collective), *The Garneau Block* (Citadel Theatre), *Holiday Project* (Amoris Projects), *Hamlet in Isolation* (Thou Art Here Theatre), *Work Plays Schools Program Modules* (Alberta Workers' Health Centre), *until the next breath* (Catalyst Theatre), *Edmonton International Fringe™ Theatre Festival* (Fringe Theatre Adventures). Upcoming: *iod* (Tiny Bear Jaws/RISER Toronto). They hold a degree from the University of Alberta's BFA Stage Management Program.



**CAITLAN
ARGUETA**
PRODUCTION
ASSISTANT

Caitlan is an Edmonton-based Latinx theatre technician, currently working as a Production Assistant with Citadel Theatre. She is a graduate of the Theatre Production Diploma from MacEwan University and has studied at the Banff Centre of Arts and Creativity. Previous credits include: *Guys and Dolls* (MacEwan); *Hamlet*; *Comedy of Errors* (Freewill Shakespeare Festival); *A Charlie Brown Christmas ft. The Jerry Granelli Trio*; *Ruben and the Dark* (Banff Centre); *Scenes From the Sidewalk* (Plain Jane Theatre).



**JENNA
KEREKES**
PRODUCTION
ASSISTANT

Jenna is an emerging arts manager in Edmonton. She graduated with a diploma in Arts and Cultural Management at MacEwan University in 2021 and plans to go back for her degree in fall 2022. Jenna has also done several community theatre shows at Stageworks Academy of the Performing Arts Leduc participating as an actor, stagehand, and lighting technician. Select credits include *Mary Poppins*, *Mama Mia!* and *Legally Blonde*. She has spent the majority of 2021 and 2022 working as a Production Assistant and Health Captain at the Citadel Theatre.

2021/22 STUDENTS CLUB

Young people are integral to the artistic fabric of the Citadel Theatre and we are committed to providing programs and initiatives that champion the development of their artistic identities. Students Club offers a unique glimpse into the world of professional theatre to a wide range of local junior and senior high school students. Prior to select performances of each of our main stage shows, students participate in a highly engaging, interactive presentation with one of our region's talented theatre artists, covering some aspect of theatre – from choreography to design, from stage combat to audition technique. Following the performance, students stay for an informative talkback with members of the production's cast and crew.

Our 2021/22 Students Club Facilitators are Deviani Andrea and Liam Monaghan. Deviani is mestiza of Mexican-Lebanese heritage. She graduated from the University of Mexico with a Bachelor's Degree in Literature, and from the Ema Pulido's Dance Studio. Liam is a writer, theatre artist, researcher, and educator, currently pursuing his MFA in Theatre Practice at the University of Alberta. His research-creation is in the areas of life-writing pedagogy, autobiographical theatre and queer identity.

For more info, or to become a part of the program, please contact
jhendrick@citadeltheatre.com

change at the Citadel and throughout the arts community. We welcome and celebrate all voices, all bodies, and all experiences.

This is a living statement that has been crafted by Citadel Theatre's Equity, Diversity & Inclusion Committee. It was last updated on May 26, 2021. If you have any questions, please contact:

EDICOMMITTEE@CITADELTHEATRE.COM

VISION STATEMENT

The Citadel Theatre believes in being Inclusive, Innovative, and International in our programming and practices

INCLUSIVE We celebrate, welcome, and share stories with the many different communities that make up Edmonton. Our stages come alive with different voices and cultures. We strive to make our productions and our facilities inclusive and accessible; we believe the Citadel is a place where everyone belongs.

INNOVATIVE Our programming will celebrate new work, new performance styles, and productions that experiment with dramatic form. We will develop large-scale new work by Edmontonian, Canadian and international playwrights. We will create collisions between different art forms, and present work that includes dance, music, and digital storytelling.

INTERNATIONAL We will present and collaborate with exciting theatre-makers from around the world, as well as taking the fantastic work of the Citadel to audiences everywhere.

RECOGNIZING OUR PARTNERS

SEASON SPONSOR



PRESENTING SPONSORS



A Christmas Carol



9 to 5: The Musical

PRODUCTION SPONSORS



9 to 5: The Musical



Peter Pan Goes Wrong

PERFORMANCE SPONSORS



A Christmas Carol



Allard Foundation
A LEGACY OF CARING

Peter Pan Goes Wrong



Peter Pan Goes Wrong

PROGRAM SPONSORS



Young Companies

I Can Pretend!
Program



House Series

Students Club



RBC Horizon
Emerging Artist

Associate
Artistic Director



Community Partner

Community Partner

OFFICIAL SUPPLIERS



MEDIA SPONSORS



PREMIER SUPPORTERS

**THANK YOU TO OUR PARTNERS IN THE
CREATION OF THEATRE AT THE CITADEL:**

The Hole Family

The Eldon and Anne Foote Fund

Maclab Development Group

The John and Barbara Poole Family Fund

The Joseph H. Shoctor Fund

GOVERNMENT AND FOUNDATION FUNDERS

Edmonton



Funded by the
Government
of Canada

Financé par le
gouvernement
du Canada

Canada



Canada Council
for the Arts

Conseil des Arts
du Canada



Foundation

We acknowledge the support of the Canada Council for the Arts, which last year invested \$195 million to bring the arts to Canadians throughout the country.

Nous remercions le Conseil des arts du Canada de son soutien. L'an dernier, le Conseil a investi 195 millions de dollars pour mettre de l'art dans la vie des Canadiennes et des Canadiens de tout le pays.



DR. JOSEPH H. SHOCTOR, 1922 – 2001

EXECUTIVE PRODUCER AND FOUNDER
OF THE CITADEL THEATRE

JOE'S VISION

brought professional theatre to Edmonton

JOE'S DREAM

built the Citadel Theatre

JOE'S SPIRIT

continues to inspire the theatre we create today

JOE'S LEGACY

lives on through a generous gift to the Citadel
from his estate

HENRY HOLE, 1884 – 1954

On the Citadel's 30th Anniversary, a gift was made by the Company of Harry Hole, James F. Hole, Ralph K. Hole and Robert W. Hole on behalf of the Hole family — in honour of their late father, Henry Hole.

The Citadel Theatre is proud to honour Henry Hole's integrity, compassion and leadership in the dedication of this complex to his memory.

ANNUAL SUPPORT

THANK YOU! We extend our heartfelt thanks to all our donors, whose generosity plays a crucial role in ensuring our community has the opportunity to experience the joy of performing arts. All of our donors have a profound and lasting impact on the quality, accessibility, and relevance of the Citadel's productions, facility, and educational offerings.

STEWARD

Gifts of \$10,000+

Marge Bowen
Randy & Wendy Dupree
Ada Hole
Al & Fran Olson
Kayla Shoctor
Marshall & Debby Shoctor
John & Dianne Storey

ARTISTIC DIRECTOR

Gifts of \$5000-\$9999

2 Anonymous
The Polar Foundation
Dr. Lorraine Bray & Jim Carter OC
M & J Dal Bello
Lesley Cormack
Brent & Deborah Hesje
Marc de La Bruyère & Stacy Schiff

DIRECTOR

Gifts of \$2,500 - \$4,999

Weir Family Fund
Mitchell Family Fund
The Honourable Darlene Acton
Bruce & Carol Bentley
Brian & Barbara Burrows
James Casey & Gail Verity
Judith Cosco

Watson Family
Wolfgang & Beth Kaminski
Allen & Patti Kramer
Donna Krucik
The Poole Family
Esther Ondrack
Sir Francis Price & The Honourable Marguerite Trussler
Grace & Arnold Rumbold
Aroon Sequeira
Dale & Chris Sheard
Sam Withanachchi
Ralph Young

STAR

Gifts of \$1000-\$2499

2 Anonymous
Flanagan Foundation
McCoy Family Foundation
Pratch Family Foundation
Timbers Consulting & HazOps Inc.
Harvey & Judith Abbott
Jennifer Addison
Dr. Ghalib Ahmen & Derek Wicks
Diana & Laurence Andriashek
Roger Babichuk
Jeff Boadway
Frank Calder
Marguerite & Zbigniew Chrzanowski
Daryl Cloran & Holly Lewis

Todd & Judy Gilchrist
Arlene Gladstone & Hamish Cameron
James Greenough
Bruce E. Hagstrom
Brenda & John Inglis
Gail & Andrew Jarema
Norman & Valerie Kneteman
Liz Kohle
Ken & Jennifer Kouri
James & Maggie Laing
Robert & Dawn Lemke
Linda & Kim MacKenzie
Neil & Pamela Martin
Laurie & Dave McInnes
Lisa Miller & Farrel Shadlyn
David Mundy
Lewis & Lindsay Nakatsui
Catrin Owen
Leslie & Rick Penny
David & Rachel Ross
Kimberlee Stadelmann
Kim Thompson & John Wilson
Lee Ann & Lorne Tyrrell
David Verbicky
Kim & Don Wheaton

LEAD

Gifts of \$500-\$999

2 Anonymous
Gary Boehm Fund
Carol Blair & Associates Inc.
Daniel Ernest Bettcher

Elizabeth Cherry
Ian and Lynne Duncan
Karen Dyberg
Andy & Marianne Elder
Liane Rae Faulder
Jean Fukushima
Gaie Goin
Sari Haas
Mary Sturgeon &
Matthew Halstead
Carol R. Jackson
Hanae Kiyooka
Linda & Siegfried
Kowand
Mary Lister
Pat Luxford
Laurie McCaffrey
Douglas & Claire
McConnell
Averie & Carman McNary
William Mustard
Edna & Cal Nichols
Cliff & Connie Otto
Fred & Helen Otto
C. Thomas & Judith
Peacocke
Jean & Edward Posyniak
Lawrence & Mary Anne
Pshyk
Tina & Tony Rota
Shauna J. Scott
Merle & Neil Taylor
Michael & Kathleen
Tomy
Mary-Ann & Andy
Trachimowich
Marianne & Allan Scott
Robert Van Soest
Shannon van Soest
Doug & Dorothy Warren
Betty Young

SUPPORTING

Gifts of \$100-\$499

14 Anonymous
Jean & Gerry Staring
Fund
Theresa Agnew
Allan Alcock
Kathryn Aleong
Sandra M. Anderson
Martin & Anna Andrea
Vance Avery
Lorelli Barbutza

Maurice & Annette
Bastide
Steve Bates
Andrew & Susan
Benkovich
Daniel Ernest Bettcher
Isabel Bernete
Lucille Birkett & Randy
Busby
Kathey & Mark Birtles
Stan Bissell
Julia Boberg
Ed and Marianne
Bouthillier
Heather Boyd
Teresa & Robyn Boyko
E Ross Bradley
Ainsley Brown
Margery E. Brown
Denise I. Bryden
Irene Cameron
Mary K. Campenot
Martin Carroll
Kate Chambers
Mr. Brian Charette
Jacqueline Charlesworth
Sharleen M. Chevraux
Rohit Chokhani
Peni Christopher
Brent Christopherson
Nancy J. Clark
Jennifer Clover
Marcie Coutts
Kim & Rick R. Craig
Pemme Cunliffe
Leeann Currie
Chris Danchuk
Marilyn Darwish
Linda Medland Davis
Karen Davison
Dorothy Dawson
Frank C. DeAngelis
Marcella Dejong
Brian & Anita Denniss
Jim & Pauline Drinkwater
Sylvia Duffus
Ian & Lynne Duncan
Roland Duquette
Erin & David Edwards
Joy Edwards
Michele Eickholt And Lee
Green
Beverley Ellingson
Carol Engelking
Alison Eshpeter

Dean M. Evanger
Solymos Family
Elizabeth Faulder
Gail Faulkner
Martin & Peggi Ferguson-
Pell
Lil Filewych
Robert T. Fleming
Cathy G. Flood
Sylvia H. E. Flood
Tim Fort
David France & Marion
Haggarty-France
Barb Funk
Myrna Fyfe
Lorie Garritty
Marla Gordulic
Bob & Alayne Graves
Susan Green & Stuart
Roth
Royston Greenwood
Audrey Groeneveld
Catherine & James
Hammond
Cathy & David Harbinson
Faye Hatch
Lois Hawkins
Jocelyn Hey
Ainsley Hillyard
Patsy Ho
Bruce & Gail Hogle
Victoria Holota
Donna Holowaychuk
Lauretta Howard
Dianne & Robert Hrab
Theresa Hryciw
Kelvin Hussey
Rob & Judy Hutchinson
Clare Irwin
Marilyn Jackson
Kelvin Jones
Jatinder & Mala Kalra
Bob Kamp
Paula Kelly
Don V. Kennedy
Janice Kent
Raeanna Koo
Sylvia A. Kother
Karen Kvill
Christine Kyriakides
Adam Lachacz
Joy & David Lardner
Kathryn & Steven Lavery
Sigmund Lee
Paul & Clarissa Lewis

Mary Lister	Paul & Leslie Precht	Elout & Adalei Starreveld
Myron & Maureen	John D. Punko	Martha Steenstrup
Liviniuk	Diana Purdy	Leland & Judy Stelck
Sandra & Jim Lockhart	Paul Puszczak	Lori Stewart & Jack
Chris & Cecile Lord	Andrew & Carol	Jervis
Liz Luchko	Raczynski	Bill Stoley
Christie Lutsiak	Dylan Reade	Keith Strong
Victoria Anne Luxton	Gary Redmond	Sydney Stuart
Janice MacDonald	Barbara Redmond-Ellehoj	Caroline Stuart
M. Louise MacGregor	Wes Owen Rempel	Craig Stumpf-Allen
Stephen & Catherine	Eric Rice	Frank & Rosanne Thede
Madsen	Sheila Ringrose	Tina Thomas
Don & Christina Mah	Ron & Carol Ritch	Maggie R. Thompson
Isobel Mailloux	Lindsay C. Robinson	Karen L C. Titanich
Linda Maki	Dean & Jan Rokosh	Mary-Ann & Andy
John Markey	Betty Ross	Trachimowich
Estelle I. Marshall	Phil Roy	Alana Mae Tucker
Linda May	Merceline Runzer-	Nancy Tymchak
Anne McLellan	Steeves	Carol Vaage
Juliet McMaster	Mitch & Maryann	Henriette van Hees
Deb McRae	Sabourin	Daniel A. Vandermeulen
Donna Meen	Penny Salmon	David & Heather Vickar
Dr. Bubbles & Evelyn	Deborah Salo	Chris Vilcsak
Meer	Kim Sanderson	Lori Anne Wall
Daniel Melenchuk	Adrienne Sannachan	Glenn Walmsley & Lois
Jennifer Mikula	Andrew & Janet Schalm	Love
Marie Montgomery	Rhonda Schnee	Nicole Watts
Joan Morrison	Culley Schweger-Bell	Michele Wedemire
Sonya & Greg Mowbrey	Dawna Scrivens	William & Debra Wells
Ruth Collins-Nakai	Jack Seto	Fred West & Chris
Lynne J. Neis	Glenn & Margaret	Brzezowski
Craig Neuman & Leita	Sharples	Daniel Westfall
Seiver	Deb Shaw	Maya Wheelock
Anne Nothof	Sol & Shirley E.	Audrey J. Whitson
Jennifer J. Oakes	Sigurdson	Kathy & Lorris Williams
David & Paula	Vivian Simmonds	Eva Willox
Onderwater	Alayne J. Sinclair	Willis Winter
Ms. Mara O Zanier	Gerry & Barbara Sinn	William & Dorothy
Kathy Packford	Sheila Sirdar	Wolodko
Stacey & Chris Padbury	Yvonne Slemko	Richard & Vivian Wong
Marian Palahniuk	Lynn Smarsh	Susan Jane Wright
Bhupen & Lata Parekh	Jacqueline Smith	Keith Wylie
Richard & Catherine	Sherry Smith	Randall & Nancy Yatscoff
Perry	Sandra Smith	Linda M. Youell
Tammy Pidner	Dale Somerville	Mary Anne Yurkiw
Heather Pontikes	Tim Spelliscy	Diane Zinyk

To learn more about donating to the Citadel Theatre, please visit www.citadeltheatre.com or contact Rebekah Andrews at randrews@citadeltheatre.com. Charitable BN 11922 7387 RR0001. Every effort has been made to ensure the accuracy of our donor information. Listing includes donations of \$100 or more. If we have made an error or omission, please contact us at randrews@citadeltheatre.com. We apologize for any inconvenience.

CITADEL STAFF

BOARD OF GOVERNORS

Solomon Rolinger
O.C. Chair

Marshall Shocter
O.C. Past Chair

Bruce Bentley
Treasurer

Tom Redl
Secretary

Wendy Dupree
Ex Officio

Frederick K.
Campbell

Jacqueline
Charlesworth

J.G. Greenough
Ada Hole

Jack McBain
Arliss Miller

Aroon Sequeira
Chris Sheard

Kayla Shocter

Dr. Robert Westbury

Sheila Witwicky

Ralph Young

BOARD OF DIRECTORS

Jeff Boadway
Chair

Jennifer Addison
Vice Chair

Wendy Dupree
Past Chair

Sandra Haskins
Treasurer

Roger Babichuk

Hunter Cardinal

Wanda Costen
Derriquer DeGagné

Kaitlyn Hunder

Marcie Kiziak

Joy Lardner

Constance Scarlett

Alex Voutchkov
Board Intern

HONOURARY DIRECTORS

Jack N. Agrios

Jane Batty

Ken Bautista

Joanne Berger

Christine Bishop

Dan Block

Guy Bridgeman

Frank Calder

Gary G. Campbell

Betty Carlson

Donald A. Carlson

Marilyn Cohen

Reg Copithorne

Len Dolgoy

Allison Edwards

Dennis Erker

Grant Fairley

John C. Forster

Frank Gibson

James Gillespie

Jane Halford

Jean Hamilton

Brian Hetherington

Becky Hole

Ted Hole

Mike House

Gary Killips

Richard Kirby

Stuart Lee

Beverlee Loat

Al Maurer

Ashif Mawji

Maureen McCaw

Lisa Miller

Susan Minsos

Terry Nistor

Bob Normand

Ted Power

Jerry Preston

Henry (Hank) Reid

Rob Reynolds

Charlotte Robb

Margot Ross-Graham

Barbara Shumsky

Peter Silverstone

Gaurav Singhmar

Larry Staples

Esther Starkman

Marianne Takach

Merle Taylor

Mr. Justice Dennis R.

Thomas

Brian Tod

John Tweddle

Brian Vaasjo

A.H. Wachowich

Bob Walker

Dr. Marvin Weisler

Bart West

Eve Willox

David Wilson

Doris Wilson

John Yerxa

HONOURARY GOVERNORS

David Bentley
Marc de La Bruyère
Anne Foote
Sandy Mactaggart
Catrin Owen

LEADERSHIP

Daryl Cloran
Artistic Director
Sarah Pocklington
Executive Director

ARTISTIC

Jessie van Rijn
Producer
Mieko Ouchi
TD Associate
Artistic Director
Luc Tellier
Director, Education
& Outreach
Helen Belay
Associate Artist
Tai Amy Grauman
Associate Artist
Wayne Paquette
Associate Producer
Diana Stevenson
Manager, Foote
Theatre School

ADMINISTRATION

Kimberlee Stadelmann
Associate Executive
Director
Peni Christopher
Asst. to the A.D.
Company Manager
Jason Yuen
Director of Finance
Heather Watson
Human Resources
Rebekah Andrews
Executive Assistant

FACILITY

Louis Barron
Director, Maintenance
Bill Daniels
Yang Yang

MARKETING AND SALES

Brianna Gallagher
Marketing and Sales
Director
Kristen Hiemstra
Creative Director
Susanne Chmait
Social Media and
Community Coordinator
Rebecca Harding
Digital Web Designer
Arthur Mah
Videographer

GUEST SERVICES

Eden Edwards
Patron Relations
Manager
Ben Osgood
Asst. Patron
Relations Manager
Melissa Budinski
Front of House Manager
Josephine Hendrick
Education & Group Sales
Administrator

EVENTS & HOSPITALITY

Maura Penn
Events Manager
Hayden Weir
Hospitality Manager
Emily Boyle
Events Supervisor
Rebecca Mattison
Ghostlight Coffeehouse
Supervisor

GUEST SERVICES SUPERVISORS

Kevin Cambridge
Ian Crichton
Victoria DeJong
Emma Jones
Brennan Murphy
Maia Trotter
Elaine Vo
Kate Walker

GUEST SERVICES REPRESENTATIVES

Isabella Balkie
Sam Banigan
Gabby Benard
Fiona Chachanna
Brooklyn Decker
Dani Dreger
Bailey Exell
Cameron Freitas
John Gunter
Islamul Haque
Brittany Hines
Rune Jander
Hale Johnston
Melanie Letourneau
Zoya Mahmood
Graham Mothersill
Chris Pereira
Elyse Roszell
Kera Stevenson
Alex Voutchkov
Vanessa Wilson
Lauren Zazula

SECURITY

Alberta Crowd
Management

JANITORIAL

Bee Clean Services

FUND DEVELOPMENT

Sydney Stuart
Director, Fund
Development

Rachel Bokenfohr
Corporate Giving Manager

Rebekah Andrews
Coordinator, Fund
Development

PRODUCTION

Cheryl L. Hoover
Director of Production

Patrick Fraser
Technical Director

Gal Minnes
Asst. Production Manager

Jacinda Grummett
Asst. Technical Director

Matthew Koyata
Asst. Technical Director

Kyla Maki
Administrative Assistant

Michelle Chan
Resident Stage Manager

Nick Rose
Acting Head of Audio

Jordan Beaubien
Assistant Head of Audio

Nicole O'Brien
Audio

Peter Locock
Head of Scenic Carpentry

Chris Hayes
Asst. Head of Scenic
Carpentry

Greg Cardinal
Scenic Carpenter

Serge Menard
Scenic Carpenter

Tegan Herron
Acting Head of Electrics

Ben Eastep
Asst. Head of Electrics

Nicole Deibert
Head of Scenic Paint

Elizabeth Zena Jenson
Asst. Head of Scenic Paint

Jim Meers
Head of Props

Angie Sotiropoulis
Asst. Head of Props

Charlotte Hunt
Props

Elizabeth Zena Jensen
Props

Marc Anderson
Head of Stage Carpentry

Kris Aasen
Asst. Head of
Stage Carpentry

Scott Bricker
Stage Carpenter

Greg Cardinal
Stage Carpenter

Doug Field
Stage Carpenter

Alana Rice
Stage Carpenter

Patsy Thomas
Head of Wardrobe

Judith Darough
Cutter

Claude Tanguay
Cutter

Genevieve Savard
Junior Cutter

Barb Becker
Fabricator

Olivia Derksen
Stitcher

Nancy Malott
Stitcher

Olivia Derksen
Head of Wardrobe Running

Skye Grinde
Dresser

Adam Blocka
Wardrobe Maintenance

Katie Patton
Head of Wigs

Christa Hoefling
Asst. Head of Wigs

Gaylynn Fell
Wigs

YOUNG COMPANY INSTRUCTORS

Deviani Andrea

Tracy Carroll

Kimberley Denis

Ainsley Hillyard

David Horak

Ian Leung

Kim Mattice-Wanat

Larissa Poho

Andrew Ritchie

Kate Ryan

FOOTE THEATRE SCHOOL INSTRUCTORS

April Banigan

Ellen Chorley

Sydney Cogan-Grahn

Jaime Garcia

Crystal Hanson

Sally Hunt

Sydney Keenan

Josh Languedoc

Conrad Leibel

Barbara Mah

Rhys O'Donnell

Clayton Plamondon

Deanna Robillard

Eileen Sproule

Julie Sucie

Kim Turner

STUDENTS CLUB FACILITATORS

Deviani Andrea

Liam Monaghan

VOLUNTEERS

Zoe Afaganis	Doug Hunter	Barbara Reinhardt
Hasra Ali	Alice Huynh	Lori Ristoff
Mackenzie Altheim	Mary Johnston Therrien	Cheryl Ritchie
Johanna Andreoff	Samantha Ju	Louise Rogucki
Judith Babcock	Joanne Kallal	Sukhjit Saimbhee
Shelley Benson	Hanae Kiyooka	Frankie Scarth
Erika Beyer	Robin Knight,	Susan Schroter
Karen Bokenfohr	Eva Kopecka	Angela Seery
Florence Borch	Arndt Kuethe	Art Shea
Ken Borch	Janice Kuethe	Theresa Shea
Marie Bowerman	Wendy Kurtz	Amanda Sim
Marcella Boyle	Karen Lewis-Caron	Colette Slevinsky
Allan Budlong	Leola Losier	James Smibert
Margot Byer	Elizabeth Luchko	Tammy Smith
Patrick Caron	Ross Machetchuk	Victoria Spang
Dee Cartledge	Dawn Madill	Deb Stack
Rob Cauti	Aidan McBride	Rhonda Taft
Lil Filewych	Joslyn McDonald	Arlene Travnik
Irene Gagne	Donna McKay	Diane Trithardt
Louise Gagne	Donna Miller	Christine Tupper
Dan Germain	Karen Miller	Christine Twardzik
Bonita Gillespie	Desiree Molnar	Lacey Untereiner
Marion Grab	Joan Murchie	Brenda Voyce
Margaret Gronnestad	Andrea Newman	Liz White-MacDonald
Julie Harvey	Florence Nieberding	Kay Willekes
Jeff Haswell	Gerald Onciul	Vanessa Wilson
Rosemarie Heaney	Linda Orlecki	Dave Wolkowski
Brad Heller	Susan Patenaude	Joyce Wong
Diane Helmers	Krista Precosky	Laura Wylde
Maria Hollinshead	Doug Racine	
Laura Hughes	Leila Ragoonanan	
	Joan Redman	