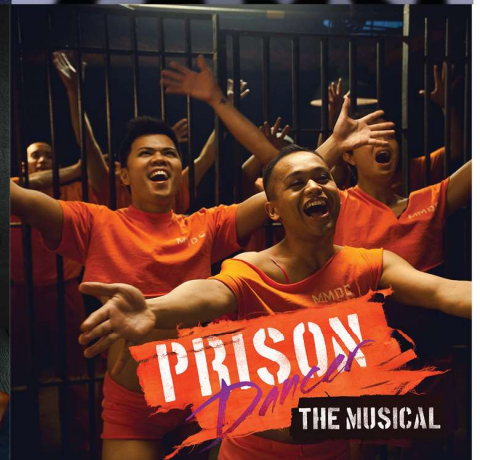
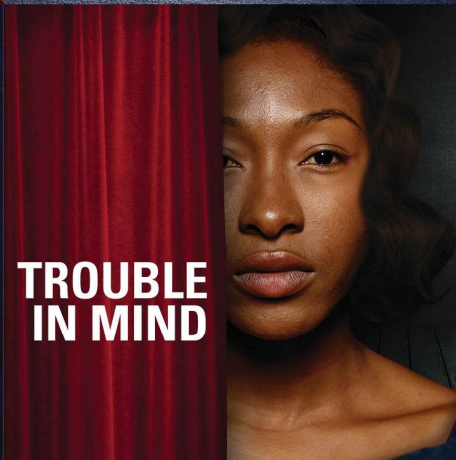
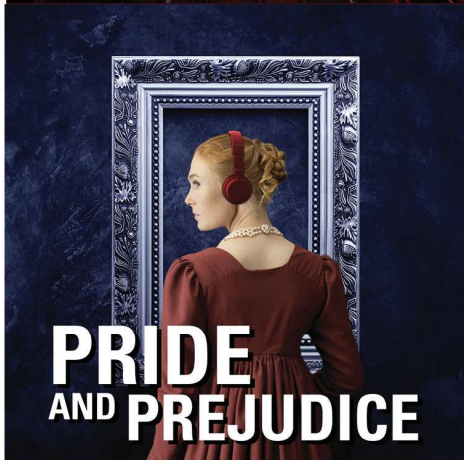
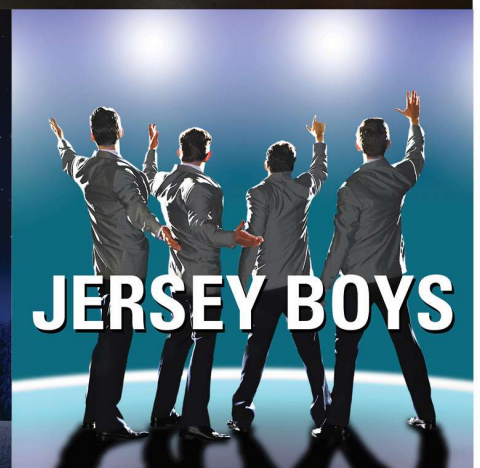


# BRING YOUR STUDENTS TO THE 2022/23 STUDENTS CLUB!

PRESENTED BY

canada *life*



## 2022-23 STUDENTS CLUB INFORMATION PACKAGE

The Citadel Theatre is proud to share our productions and our passion for theatre with school audiences from Edmonton and surrounding communities. We offer a special Students Club Package for junior and senior high students to attend our Mainstage productions, and consider these to be an essential part of our programming. We believe that all individuals should have the opportunity to experience, appreciate, and participate in live theatre. Sharing live theatre with new audiences, be they youths or adults, requires education and cooperation as it is a communal and participatory art form. The Citadel Theatre works to ensure that all patrons have a positive experience when visiting the theatre.

The Students Club Package includes a pre-show presentation by working members of the Edmonton theatre community, attending the Mainstage performance, and a talkback with cast and crew following the show.

Please be aware that the age recommendations provided are subjective. We will do our best to provide age recommendations and any applicable warnings in advance; however, things are subject to change at the Director's discretion during the rehearsal process.

Some productions in the Citadel's 2022/23 Season are not included in the regular Students Club package. If you would like to add one of the Summer or Seasonal shows, or wish to opt out/exchange out of a Mainstage show due to age recommendation and mature content, please contact the Education and Group Sales Administrator.

## TABLE OF CONTENTS

<b>About Students Club</b>	<b>Page 2</b>
<b>2022-23 Show Descriptions</b>	<b>Page 3</b>
<b>2022-23 Seasonal Shows</b>	<b>Page 5</b>
<b>Policies and Procedures</b>	<b>Page 6</b>
<b>Ticketing and Seats</b>	<b>Page 6</b>
<b>Supervisor Packages</b>	<b>Page 6</b>
<b>Additional Tickets for Students</b>	<b>Page 6</b>
<b>Additional Tickets for Adults</b>	<b>Page 6</b>
<b>Ticket Exchanges</b>	<b>Page 7</b>
<b>Latecomer Seating and Re-entry</b>	<b>Page 7</b>
<b>Payment Options</b>	<b>Page 7</b>
<b>Cancellation and Refunds</b>	<b>Page 7</b>
<b>Age Policy and Content</b>	<b>Page 8</b>
<b>Covid-19 Safety Procedures</b>	<b>Page 8</b>
<b>Theatre Etiquette</b>	<b>Page 8</b>
<b>2022-23 Students Club Booking Form</b>	<b>Page 10</b>

## ABOUT STUDENTS CLUB

Students Club is a program for junior and senior high school students to experience and learn about live theatre in an exciting and educational way. The program offers options for students to see our six Mainstage shows, and prior to each performance students can enjoy a pre-show workshop by working members of the Edmonton theatre community. After the performance, students can stay for a talk-back with members of the cast and crew.

Some examples of past pre-show workshops include: scenic painting, fight choreography, auditions, and puppetry. Pre-shows will include an element of workshops/participation by volunteering.

Students Club takes place on both a **Tuesday** and **Wednesday** evening early in the run of the production (additional Students Club nights will be added if we have a high demand).

6:30 p.m. — Pre-show presentation.

7:30 p.m. — Mainstage performance, followed by a 15 to 20-minute talk-back.

Students Club Options:	Cost Per Student:	Shows Included:
6-Show Package	\$205.74 (including GST)	<i>Network, Almost a Full Moon, Jersey Boys, Pride and Prejudice, Trouble in Mind and Prison Dancer.</i>
3-Show Package	\$102.87 (including GST)	Choose any 3 of the above shows.
Single Production	\$34.29 (including GST)	Choose any 1 of the above shows.

Most Students Club packages are booked through schools via a teacher, but we also welcome home-school groups. Parents who wish to attend should contact the Box Office to purchase their own Season Ticket Package, or contact the Education and Group Sales Administrator for more details.

If a student is unable to attend on their scheduled night, please contact either the Education and Group Sales Administrator or the Box Office at least 24 hours in advance to exchange into another Tuesday, Wednesday, Thursday, Sunday evening, or Saturday matinee performance. Please note that non-Students Club nights will not include a pre-show or talkback. Tickets will not be exchanged for performances on the day of, or after a performance has passed. Refunds will not be provided for missed performances. The Citadel Theatre has a no-refund policy—all sales are final.

Reminder emails will be sent prior to each performance with updated run times, audience advisories, enrichment guides, etc. These emails will only be sent to the primary contact. Please forward these emails to your other supervisors.

Schools interested in bringing students to one of our Seasonal Add-On shows can do so by contacting the Education & Group Sales Administrator. Schools may choose to opt out of a Mainstage production due to mature content or age recommendations, and are welcome to replace those with Seasonal shows. Please be aware that Seasonal performances do not include a pre-show presentation or a talk-back. Tickets include the performance only. Some shows may start at 8:00 p.m. instead of 7:30 p.m.

Students Club members receive a discount of 15% off food and beverage items at the Citadel's Ghostlight Coffee House.

For any booking questions or requests, please contact our Education & Group Sales Administrator at [jhendrick@citadeltheatre.com](mailto:jhendrick@citadeltheatre.com).



## 2022-23 SHOW DESCRIPTIONS

The Students Club dates below are confirmed, and every show also has two additional potential dates that will be opened up if there is a high enough demand.

**September 17 -October 9,  
2022**

Students Club: September 20 & 21

Shoctor Theatre

Recommended Ages: 14+

Approximate run time: 2 hours  
(including one 15 minute  
intermission)

Warning: The production contains  
some strong language, mature  
themes, and suicide.



### NETWORK

*Adapted by: Lee Hall. Based on the Academy-Award-winning screenplay by Paddy Chayefsky. Directed by Daryl Cloran.*

Howard Beale, news anchorman, isn't pulling in the viewers. In his final broadcast, he unravels live on screen but when the ratings soar, the network seizes on their newfound prophet, and Howard becomes the biggest thing on TV. This thrilling high-tech satire examines our relationship with the media in a very timely way. Network originally premiered at the National Theatre in 2017. The play moved to Broadway in 2018 with resounding success.

**November 5 - 27, 2022**

Students Club: November 8 & 9

Shoctor Theatre

Recommended Ages :10+

Approximate run time: 2 hours  
(including one 15 minute  
intermission)



### ALMOST A FULL MOON

*By Charlotte Corbeil-Coleman. Featuring the songs of Hawksley Workman. Directed by Daryl Cloran.*

Commissioned by the Citadel, Almost a Full Moon is inspired by the beloved Christmas album by Canadian singer/songwriter Hawksley Workman. This beautiful new holiday musical follows three storylines that chase in and out of different ages of Christmas, love, and family, winding together for a timeless story.

**February 11 - March 12,  
2023**

Students Club: February 14 & 15

Shoctor Theatre

Recommended Ages: 14+

Approximate Run time: 2 hours  
and 20 minutes (including one 15  
minute intermission)



### JERSEY BOYS

*The story of Frankie Valli & The Four Seasons. Book by Marshall Brickman & Rick Elice. Music by Bob Gaudio. Lyrics by Bob Crewe. Directed and Choreographed by Julie Tomaino.*

Four men from the wrong side of the tracks in New Jersey came together in the 1960's to form one of the most successful bands in music history. Spanning across decades, this musical tale reveals the inspiring behind-the-music story of The Four Seasons, their rise to fame and the trials that could tear them apart. You will want to sing along to classics like "Big Girls Don't Cry" and "Walk Like a Man" before the show is over.

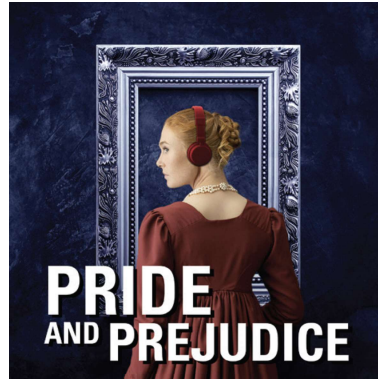
**March 11 - April 2, 2023**

Students Club: March 14 & 15

Maclab Theatre

Recommended Ages: 14+

Approximate Run Time: 2 hours  
and 25 minutes (including one 15  
minute intermission)



## PRIDE AND PREJUDICE

*By Kate Hamill. Based on the novel by Jane Austen. Directed by Mieko Ouchi.*

One of literary history's most famous couples comes to life in this modern take on Jane Austen's most famous works, *Pride and Prejudice*. The clever and independent-willed Elizabeth Bennet has no thoughts of marriage, unlike her sisters and overzealous mother, but the arrival of the enigmatic Mr. Darcy may change all of that. Will they overcome their pride and other societal obstacles to come together at last?

**March 25 - April 16, 2023**

Students Club: April 4 & 5

Shoctor Theatre

Recommended Ages: 14+

Approximate run time: 2 hours and  
10 minutes (including one 15  
minute intermission)



## TROUBLE IN MIND

*By Alice Childress. Directed by Audrey Dwyer. A Co-Production with Royal Manitoba Theatre Centre.*

Set in 1957, *Trouble In Mind* is a fascinating comedy-drama that takes a look at racism in the New York theatre scene. When the cast gathers to begin rehearsals, racial biases and tensions rise. When Wiletta Mayer, a talented Black actress, finds that her arguments to tell the truth of the story are dismissed, she decides to take action.

**May 6 - 28, 2023**

Students Club: May 16 & 17

Shoctor Theatre

Recommended Ages: 14+

Approximate run time: 90 minutes  
(no intermission)



## PRISON DANCER: THE MUSICAL

*Music and Lyrics by Romeo Candido. Book by Romeo Candido and Carmen De Jesus.*

In 2007, a video of 1,500 inmates in a Philippines prison dancing to Michael Jackson's "Thriller" was posted to YouTube and quickly became one of the internet's first viral videos. The "Dancing Inmates of Cebu" are the inspiration behind this exciting new musical by Filipino-Canadian creators Romeo Candido and Carmen De Jesus.

## 2022-23 SEASONAL SHOWS

**PLEASE NOTE:** The following Summer and Seasonal shows are not included in the Students Club Package. If you would like to purchase additional tickets for any of these productions, please contact the Education and Group Sales Administrator at [jhendrick@citadeltheatre.com](mailto:jhendrick@citadeltheatre.com).

**July 16 - August 7,  
2022**

Shoctor Theatre

Recommended Ages: 10+

Approximate run time: 90  
minutes (no intermission)



### CLUE

Based on the screenplay by Jonathan Lynn. Written by Sandy Rustin. Additional Material by Hunter Foster and Eric Price. Directed by Nancy McAlear.

It's a dark and stormy night, and you've been invited to an unusual dinner party. Each of the guests has an alias: Scarlet, Plum, Mustard; the butler offers a variety of weapons, and the host is, well... dead. So whodunnit? Join us for this madcap comedy inspired by the popular 1980s film that will keep you guessing until the final twist!

**November 26 -  
December 23, 2022**

Maclab Theatre

Recommended Ages: 6+

Approximate run time: 2  
hours 15 minutes (including  
one 15 minute intermission)

Warning: Contains  
frightening scenes that may  
not be suitable for younger  
children



### A CHRISTMAS CAROL

By David van Belle. Based on the novella by Charles Dickens. Directed by Daryl Cloran.

Packed with your favourite classic Christmas tunes, this adaptation of the beloved tale of a miserly old man who is invited to change his ways by the Ghosts of Christmas, will carry you away into the magical era of films like It's a Wonderful Life and Miracle on 34th Street.

**February 4-19, 2023**

Maclab Theatre

Recommended Ages: 14+

Approximate run time: 90  
minutes (no intermission)



### THE ROYALE

By Marco Ramirez. Directed by Philip Akin.

Jay "The Sport" Jackson dreams of being the undisputed heavyweight champion of the world. But it is 1905, and in the racially segregated world of boxing, his chances are as good as knocked out. Inspired by the life of Jack Johnson, the first Black heavyweight world champion, The Royale brings to explosive life the ultimate fight for a place in history.

## **POLICIES AND PROCEDURES**

### **TICKETING AND SEATS**

To help keep the Students Club package affordable, tickets are first booked at the back of the theatre and closer to the performance date, tickets will be moved forward into seats closer to the stage. We will do our best to keep everyone in your group as close together as possible.

For this reason, we recommend that tickets be left on account and picked up on the evening of the performance. If you wish to pick up all of your tickets in advance, your seats will not be moved up and your group will remain seated near the back of the theatre.

Tickets can be picked up at the Box Office under the school or primary contact's name.

If you require accessible seating (e.g. wheelchair seats) please contact the Education & Group Sales Administrator as soon as possible due to limited availability.

### **SUPERVISOR PACKAGES**

The intent of the Students Club package is to cultivate and grow the next generation of theatre goers in Edmonton by providing a more affordable package for students to attend and participate in a unique theatre experience. Due to the limited number of packages available each night, we can only offer a limited number of these discounted packages for adults. Our recommended ratio is 1 supervisor per 10-15 students.

For every 15 students attending, we can offer 1 complimentary Students Club package for a supervisor.

If there are extenuating circumstances that require additional supervisor packages (e.g. an aide or bus driver), please contact the Education & Group Sales Administrator to discuss.

If additional teachers wish to purchase a season package, EPSB and ECSD is part of our Corporate Benefits Program and teachers can purchase A-level Season Ticket Packages at 10 % off. These can be booked through the Box Office at 780.425.1820.

### **ADDITIONAL TICKETS FOR STUDENTS**

Students Club is meant to be purchased as a package. We understand that at times you may have students who are interested in joining but are not ready to commit to the full season. There is a limited number of Students Club tickets that can be booked per evening, and if there is room available, we may be able to make an exception for a student to purchase one ticket at the Students Club price to join your group. If they have a good experience and wish to join, we can book them a pro-rated Students Club package for the rest of the season.

### **ADDITIONAL TICKETS FOR ADULTS**

If you would like to purchase additional tickets for an adult, we will not be able to offer them the Students Club price. They must purchase regular priced tickets. If they would like to be seated with the school, these tickets will need to be booked through the Education & Group Sales Administrator — we can offer a 20% discount off of the price code A seating; however, due to the way Students Club tickets are booked, we will not be able to confirm seat numbers and these tickets will need to be picked up on the night of the performance.

Parents wishing to attend on the same evenings as their children can also consider purchasing their own Season Ticket Package through the Box Office. Due to the way our regular season tickets are booked compared to Students Club tickets, parents will need to check with the school to confirm



performance dates as they may need to exchange some of their tickets to another week. They can contact the Education & Group Sales Administrator for more information.

## **TICKET EXCHANGES**

The Citadel Theatre has a 24-hour exchange policy. Tickets for a performance can only be exchanged up until the day before the scheduled performance. Same day exchanges and tickets for a past performance will not be exchanged. No refunds are provided for a missed performance.

Students Club tickets can be exchanged into any other Tuesday, Wednesday, Thursday, Sunday evening, or Saturday matinee performance. Please be aware that some Saturdays and Sundays may only have a matinee or an evening performance. Pre-shows and talkbacks are only programed for the first Tuesday and Wednesday evenings of the run (more pre-shows and talkbacks may be scheduled if there is high enrolment in Students Club). Please note, if a production is scheduled to run for 4 weeks instead of 3, there will be no pre-show or talkback during the 4th week.

Exchanges can be done through the Education & Group Sales Administrator or the Box Office. If your entire group needs to change dates due to a scheduling conflict, please contact the Education & Group Sales Administrator.

\* If tickets have been printed and picked up in advance, the seat number for the ticket being exchanged must be provided or we will not be able to exchange their ticket. The original ticket must be brought to the Box Office when picking up the new ticket.

## **LATECOMER SEATING AND RE-ENTRY**

After the performance has started, any individuals arriving late, or who have stepped out to use the washroom, may not be able to enter the theatre or return to their original seat right away. To minimize disruptions for the audience and the actors on stage, our ushers will only be able to admit entry at appropriate times (scene changes, loud musical numbers, etc), as per the Stage Manager and Front of House's discretion. Individuals must be seated at the back of the theatre in Latecomer Seating. Individuals may return to their original seats at intermission.

If there is no appropriate time for an individual to re-enter, they may be asked to stay out in the lobby until intermission is over or until the end of the performance. For this reason, younger students leaving the theatre should be accompanied by a supervisor as they are the school's responsibility.

## **PAYMENT OPTIONS**

An invoice will be emailed to the primary contact (or other, if specified) once numbers have been confirmed.

The Box Office accepts payment via credit card or cheque (payable to Citadel Theatre). Cash may also be accepted in person. If your school wishes to pay by electronic funds transfer, please note that these payments go to the Accounting Department and are therefore not automatically processed as a payment on your order. The payment will need to be applied to your account manually by the Box Office. To ensure that the Box Office receives notice of your EFT payments, please include a memo with either the order number or account number provided on the invoice. Our banking information for EFT payments can be requested through [accountspayable@citadeltheatre.com](mailto:accountspayable@citadeltheatre.com).

## **CANCELLATIONS AND REFUNDS**

The Citadel Theatre has a no-refund policy. All sales are final. However, requests can be submitted in writing to the Education & Group Sales Administrator for approval. These requests will be reviewed on a case-by-case basis. We cannot refund tickets to a missed performance. Please ensure all students have their scheduled performance dates. If they are unable to attend a performance, they have up until the day before their scheduled performance to exchange their



tickets to another date within the restrictions listed under the section on Ticket Exchanges (top of page 8).

## AGE POLICY AND CONTENT

No children under the age of 5 will be admitted into the theatre. If a young child under the age of 5 is turned away at the theatre doors, no refunds will be provided.

Age recommendations are subjective and are not strict restrictions; however, please be aware that some productions may contain mature language and/or subject matter. The Education & Group Sales Administrator will try to provide any applicable warnings in advance but they are subject to change at the Director's discretion during the rehearsal process.

If age recommendations and subject matter are a concern for younger students and you wish to make adjustments to your packages either by opting out of a production or exchanging into non-Mainstage production, please discuss this with the Education & Group Sales Administrator when booking. If you are unsure about the 14+ shows and would like to wait until more information is available regarding the production, it is generally easier (logistically) to opt out at the time of booking and add tickets at a later date.

## COVID-19 SAFETY PROCEDURES

At this time, masks are not mandatory for guests, but are strongly recommended. The Citadel will continue to evaluate their safety procedures, and will update their website and the public if they make any changes.

For more information please see our [COVID FAQs](#) page on our website, which we will continue to update.

## THEATRE ETIQUETTE

Please review this section with all supervisors and students attending the performance. We ask that supervisors spread themselves out and seat themselves among their students. It can be difficult/disruptive for our ushers to go through the seats if there is a disturbance in the middle of a row. The Citadel relies on the assistance of the schools' supervisors to supervise their students during performances.

- Photography and video/audio recordings of performances are not allowed and are strictly prohibited.
- Turn off and put away all electronics that emit sound or light, such as cell phones, fitbits, smart watches, mp3 players, handheld video game consoles, tablets, laser pointers, and other hand held devices.
- The actors on stage can see and hear the audience during the performance - it is important for audience members not to talk, move around, or fidget during the performance, as it can be distracting to the actors as well as fellow audience members.
- Please keep bags under your seat, and do not leave them in the aisles in front of your feet, or on the sides. It may impair the ability of persons to exit the row in an emergency. Some productions may also have actors walking in the aisles during a performance.
- Do not put your feet on or climb onto the theatre seats or hand railings.
- Do not interfere with the actors or the performance (e.g. tripping, throwing items on or near the stage, etc.)
- There is no dress code at the Citadel, but we respectfully request that patrons refrain from wearing hats in the theatre.

- No outside food or drinks allowed. Only drinks in Citadel sippy cups or other bottled beverages sold at the Citadel bar or Ghostlight Coffee House will be admitted.
- Any individuals behaving in a disruptive manner may be removed from the theatre. No refunds will be provided. Please note the Citadel recognizes that all citizens should have the opportunity to experience art and culture. We will do what we can to ensure special needs patrons are able to attend Citadel productions and some exceptions may be made.

**ALLERGY ALERT:** The Citadel Theatre is a scent-free building. For the safety of those with allergies, please refrain from wearing perfume or other scented products.

## 2022-23 STUDENTS CLUB BOOKING FORM

### What's included?

- **Tickets to six Mainstage productions at \$205.74 including GST**

Productions included: *Network*, *Almost a Full Moon*, *Jersey Boys*, *Pride and Prejudice*, *Trouble in Mind* and *Prison Dancer*.

OR

- **Tickets to three Mainstage productions at \$102.87 including GST**

Choose 3 of the 6 above productions or \**A Christmas Carol*

\*Please note that *A Christmas Carol* does not include the pre-show workshop or post-show talkback as it is a seasonal add-on show.

OR

- **A ticket for a single Mainstage show at \$34.29 with the opportunity of a pro-rated package later.**

Choose 1 of the 6 above productions or \**A Christmas Carol*

\*Please note that *A Christmas Carol* does not include the pre-show workshop or post-show talkback as it is a seasonal add-on show.

AND

- **6:30 p.m.—7:15 p.m. - Pre-show workshop with a working member of the Edmonton theatre community.** We try to program a variety of engaging topics throughout the season and students are encouraged to participate during the pre-shows.
- **7:30 p.m. - Mainstage production followed by a 15 to 20-minute talk-back with members of the cast and crew.**

Please see page \_\_\_\_ regarding Students Club packages for supervisors.

### Please select your preferred day:

\_\_\_\_ Tuesday      \_\_\_\_ Wednesday

### Please indicate how many students and supervisors will be in attendance:

\_\_\_\_ Students      \_\_\_\_ Supervisors/Teachers

### Please indicate any relevant mobility or health concerns for your party below:



An invoice will be sent once dates and numbers have been confirmed.

All orders are subject to a \$10.00 +GST ticket handling fee.

### Payment options:

\_\_\_ Cheque made payable to the Citadel Theatre

\_\_\_ \*Electronic Funds Transfer

\*EFT payments go directly through the Citadel's Accounting Department (who can be reached at [accountspayable@citadeltheatre.com](mailto:accountspayable@citadeltheatre.com)) and are not automatically processed through the Box Office's ticketing software. If Paying by EFT, it is important to reference your account or order number with the payment.

\_\_\_ Credit Card:      Visa    |      MasterCard    |      AMEX

Card Number:

---

Expiry Date:

---

Name on Card:

---

Signature:

---

*If you wish to have the invoice/receipts emailed to an individual other than the primary contact, please include their contact information here:*

Name:

---

Email:

---

By signing this booking form, I (print name), \_\_\_\_\_  
confirm that I have read through the Policies and Procedures on pages seven through nine of the 2021/22 Students Club Information Package and agree to comply with the policies and procedures outlined. I agree to review the section on Theatre Etiquette with my students and supervisors prior to the performance.

Date:

Signature:

---