

# JERSEY BOYS



## THE STORY OF FRANKIE VALLI & THE FOUR SEASONS

Book by Marshall Brickman & Rick Elice

Music by Bob Gaudio • Lyrics by Bob Crewe

**THE  
CITADEL  
THEATRE**

SEASON  
SPONSOR

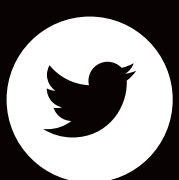
**Capital  
Power** 



# THE CITADEL THEATRE

**DARYL CLORAN**  
ARTISTIC DIRECTOR

**SARAH POCKLINGTON**  
EXECUTIVE DIRECTOR



@CITADELTHEATRE



@CITADELTHEATREYEG

The video or audio recording of this performance  
by any means is strictly prohibited.

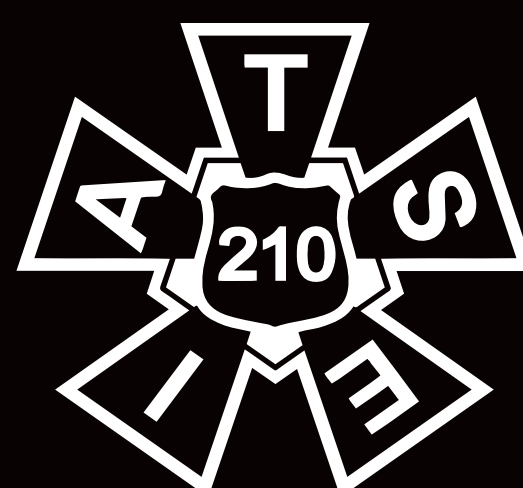


**WE WISH TO ACKNOWLEDGE** that the land on which we gather is Treaty No. 6 territory and a traditional meeting ground and home of the First Nations, including both the treaty signatories – Cree, Saulteaux, Nakota Sioux, Stony and Cree-Iroquois – as well as other Indigenous peoples, such as the Blackfoot and Métis, who occupy this land. We extend our appreciation for the opportunity to live, create and perform on this territory.

Nikistêyhtamâkânân oma askîwihtâwin ita  
kâ mâwasakôyâhk Nikotwâsik Kâ akihtêk  
omâmawôpayônôwâw Nistam Îyinôwak,  
nânapo ôkih tipahamawâkan tahkikwanênkêwak-  
Nêhîyawak, Nahkawînôwak, Opwâsîmowak, Asinî  
Pwâtak êkwah Nêhîyaw Paskosikanak-êkwah  
kotakak Îyinôwak, tâpiskôc Kaskitêwayasitak êkwah  
Âpihtwâyak, kâkîh kikîwîhkêcik otah. Nitâniskê  
nanâskôtênân tawâw ôtah êh ayâyâhk tita wîci  
pimâtisîhtamâhk, tita osîhcikêyâhk êkwah tita  
nôkohtihiwêyâhk otah askîwihtâwinihk.

The Citadel engages, under the terms of the Canadian Theatre Agreement, professional artists who are members of the Canadian Actors' Equity Association. Production personnel for the Citadel Theatre are members of the International Alliance of Theatrical Stage Employees (I.A.T.S.E.)

Indicated designers on this production are represented by the Associated Designers of Canada, IATSE Local ADC659.





# JERSEY BOYS

## JERSEY BOYS

**THE STORY OF FRANKIE VALLI & THE FOUR SEASONS**

Book by Marshall Brickman & Rick Elice

Music by Bob Gaudio

Lyrics by Bob Crewe

### CAST

Vance Avery	Bob Crewe, Ensemble
Devon Brayne	Nick Massi
Billy Brown	Joey, Ensemble
Samantha Currie	Lorraine, Ensemble
Sheldon Elter	Gyp DeCarlo, Ensemble
Daniela Fernandez	Mary Delgado, Ensemble
Jordan Goodridge	Barry Belson, Hal Miller, Ensemble
Andrew MacDonald-Smith	Norm Waxman, Nick DeVito, Hank Majewski, Ensemble
Christina Nguyen	Francine, Ensemble
Kale Penny	Tommy DeVito
Hal Wesley Rogers	Joe Long, Ensemble
Jason Sakaki	Bob Gaudio
Farren Timoteo	Frankie Valli



UNDERSTUDIES

Vance Avery	Gyp DeCarlo, Ensemble
Billy Brown	Norm Waxman, Nick DeVito, Hank Majewski, Ensemble
Niko Combitsis	Frankie Valli, Bob Gaudio
Troy Goldthorp	Nick Massi, Tommy DeVito, Bob Crewe, Joe Long, Ensemble
Hal Wesley Rogers	Joey, Barry Belson, Hal Miller, Ensemble
Karlee Squires	Lorraine, Francine, Mary Delgado, Ensemble

BAND

Steven Greenfield	Keys
Jim Cockell	Contractor
Dan Davis	Reed
Jim Head	Guitar
Allyson MacIvor	Drums
Jessica Pradhan	Bass (Intern)
Aretha Tillotson	Bass
Russell Whitehead	Trumpet / Flugelhorn

CREATIVE TEAM

Julie Tomaino	Director and Choreographer
Steven Greenfield	Music Director
Gillian Gallow	Co-Set and Props Designer
Beyata Hackborn	Co-Set and Props Designer
Leona Brausen	Costume Designer
Jareth Li	Lighting Designer
Brian Kenny	Sound Designer
Morgan Yamada	Fight Director
Alison Matthews	Dialect Coach
Gianna Vacirca	Assistant Director, Assistant Choreographer



Larissa Poho	Assistant Music Director
Even Gilchrist	Assistant Lighting Designer
Jordan Goodridge	Dance Captain
Christina Nguyen	Fight Captain
Michelle Chan	Stage Manager
Lore Green	Assistant Stage Manager
Krystal Johnson	Apprentice Stage Manager

**VENUE** Shoctor Theatre

**AGE RECOMMENDATION** 14+

**RUN TIME** Approximately 2 Hours and 15 minutes

**INTERMISSION** 15 Minutes

**SYNOPSIS** Four men from the wrong side of the tracks in New Jersey came together in the 1960's to form one of the most successful bands in music history. Spanning across decades, this musical tale reveals the inspiring behind-the-music story of The Four Seasons, their rise to fame and the trials that could tear them apart. You will want to sing along to classics like "Big Girls Don't Cry" and "Walk Like a Man" before the show is over.

**THANK YOU TO** University of Alberta's Drama Department's Wardrobe Department, Tara Litvack, Julia Sunay, David Terriault and Steve Orich.

Original Broadway Stage Production by Dodger Theatricals (Michael David, Edward Strong, Rocco Landesman, Des McAnuff); Joseph J. Grano; Tamara and Kevin Kinsella; Pelican Group in association with Latitude Link Rick Steiner/Osher/Staton/Bell/Mayerson Group World Premiere Produced by La Jolla Playhouse, La Jolla, CA, Des McAnuff, Artistic Director & Steven B. Libman, Managing Director



“JERSEY BOYS” is presented through special arrangement with and all authorized performance materials are supplied by Theatrical Rights Worldwide, 1180 Avenue of the Americas, Suite 640, New York, NY 10036. [www.theatricalrights.com](http://www.theatricalrights.com)

## MUSICAL NUMBERS

### ACT I

**Ces Soirées-La (Oh What a Night)** - French Rap Star, Backup Group

**Silhouettes** - Tommy DeVito, Nick Massi, Nick DeVito, Frankie Castellucio

**You're the Apple of My Eye** - Tommy DeVito, Nick Massi, Nick DeVito

**I Can't Give You Anything But Love** - Frankie Castellucio

**Earth Angel** - Tommy DeVito, Full Company

**Sunday Kind of Love** - Frankie Valli, Tommy DeVito, Nick Massi, Nick's Date

**My Mother's Eyes** - Frankie Valli

**I Go Ape** - The Four Lovers

**(Who Wears) Short Shorts** - The Royal Teens

**I'm in the Mood for Love/Moody's Mood for Love** - Frankie Valli

**Cry for Me** - Bob Gaudio, Frankie Valli, Tommy DeVito, Nick Massi

**An Angel Cried** - Hal Miller and The Rays

**I Still Care** - Miss Frankie Nolan and The Romans

**Trance** - Billy Dixon and The Topix

**Sherry** - The Four Seasons

**Big Girls Don't Cry** - The Four Seasons

**Walk Like a Man** - The Four Seasons

**December, 1963 (Oh What a Night)** - Bob Gaudio, Full Company



**My Boyfriend's Back** - The Angels

**My Eyes Adored You** - Frankie Valli, Mary Delgado, The Four Seasons

**Dawn (Go Away)** - The Four Seasons

**Walk Like a Man (reprise)** - Full Company

## **ACT II**

**Big Man in Town** - The Four Seasons

**Beggin'** - The Four Seasons

**Stay** - Bob Gaudio, Frankie Valli, Nick Massi

**Let's Hang On (To What We've Got)** - Bob Gaudio, Frankie Valli

**Opus 17 (Don't You Worry 'Bout Me)** - Bob Gaudio, Frankie Valli and The New Seasons

**Bye Bye Baby** - Frankie Valli and The Four Seasons

**C'mon Marianne** - Frankie Valli and The Four Seasons

**Can't Take My Eyes Off of You** - Frankie Valli

**Working My Way Back to You** - Frankie Valli and The Four Seasons

**Fallen Angel** - Frankie Valli

**Rag Doll** - The Four Seasons

**Who Loves You** - The Four Seasons, Full Company



## SONG CREDITS

“Ces Soirees-La ("Oh What a Night")” (Bob Gaudio, Judy Parker, Yannick Zolo, Edmond David Bacri), Jobete Music Company Inc., Seasons Music Company (ASCAP).

“Silhouettes” (Bob Crewe, Frank Slay, Jr), Regent Music Corporation (BMI).

“You're the Apple of My Eye” (Otis Blackwell), EMI Unart Catalog Inc. (BMI).

“I Can't Give You Anything But Love” (Dorothy Fields, Jimmy McHugh), EMI April Music Inc., Aldi Music Company, Cotton Club Publishing (ASCAP).

“Earth Angel” (Jesse Belvin, Curtis Williams, Gaynel Hodge), Embassy Music Corporation (BMI).

“A Sunday Kind of Love” (Barbara Belle, Anita Leanord Nye, Stan Rhodes, Louis Prima), LGL Music Inc./Larry Spier, Inc. (ASCAP).

“My Mother's Eyes” (Abel Baer, L. Wolfe Gilbert), Abel Baer Music Company, EMI Feist Catalog Inc. (ASCAP).

“I Go Ape” (Bob Crewe, Frank Slay, Jr.) MPL Music Publishing Inc. (ASCAP).

“(Who Wears) Short Shorts” (Bob Gaudio, Bill Crandall, Tom Austin, Bill Dalton), EMI Longitude Music, Admiration Music Inc., Third Story Music Inc., and New Seasons Music (BMI).

“I'm in the Mood for Love” (Dorothy Fields, Jimmy McHugh) Famous Music Corporation (ASCAP).

“Moody's Mood for Love” (James Moody, Dorothy Fields, Jimmy McHugh), Famous Music Corporation (ASCAP).

“Cry for Me” (Bob Gaudio), EMI Longitude Music, Seasons Four Music (BMI).

“An Angel Cried” (Bob Gaudio), EMI Longitude Music, Seasons Four Music (BMI).



“I Still Care” (Bob Gaudio), Hearts Delight Music, Seasons Four Music (BMI).

“Trance” (Bob Gaudio), Hearts Delight Music, Seasons Four Music (BMI).

“Sherry” (Bob Gaudio), MPL Music Publishing Inc. (ASCAP).

“Big Girls Don't Cry” (Bob Gaudio, Bob Crewe), MPL Music Publishing Inc. (ASCAP).

"Walk Like a Man" (Bob Crewe, Bob Gaudio), Gavadima Music, MPL Communications Inc. (ASCAP).

“December, 1963 (Oh What A Night)” (Bob Gaudio, Judy Parker), Jobete Music Company Inc., Seasons Music Company (ASCAP).

“My Bovfriend's Back” (Robert Feldman, Gerald Goldstein, Richard Gottehrer), EMI Blackwood Music Inc. (BMI).

“My Eves Adored You” (Bob Crewe, Kenny Nolan), Jobete Music Company Inc., Kenny Nolan Publishing (ASCAP), Stone Diamond Music Corporation, Tannyboy Music (BMI).

“Dawn, Go Away” (Bob Gaudio, Sandy Liner), EMI Full Keel Music, Gavadima Music, Stebojen Music Company (ASCAP).

“Big Man in Town” (Bob Gaudio), EMI Longitude Music (BMI), Gavadima Music (ASCAP).

“Beggin'” (Bob Gaudio, Peggy Farina), EMI Longitude Music, Seasons Four Music (BMI).

“Stay” (Maurice Williams), Cherio Corporation (BMI).

“Let's Hang On (To What We've Got)” (Bob Crewe, Denny Randell, Sandy Linzer), EMI Longitude Music, Screen Gems-EMI Music Inc., Seasons Four Music (BMI).



“Opus 17 (Don't You Worry 'Bout Me)” (Denny Randell, Sandy Linzer), Screen Gems-EMI Music Inc., Seasons Four Music (BMI).

“Everybody Knows My Name” (Bob Gaudio, Bob Crewe), EMI Longitude Music, Seasons Four Music (BMI).

“Bye Bye Baby” (Bob Crewe, Bob Gaudio), EMI Longitude Music, Seasons Four Music (BMI).

“C'mon Marianne” (L. Russell Brown, Ray Bloodworth), EMI Longitude Music and Seasons Four Music (BMI).

“Working My Way Back To You” (Bob Gaudio, Bob Crewe), EMI Longitude Music, Seasons Four Music (BMI).

“Fallen Angel” (Guy Fletcher, Doug Flett), Chrysalis Music (ASCAP).

“Rag Doll” (Bob Crewe, Bob Gaudio) EMI Longitude Music (BMI), Gavadima Music (ASCAP).

“Who Loves You?” (Bob Gaudio, Judy Parker), Jobete Music Company Inc., Seasons Music Company (ASCAP).



## HEARING LOOP

The Shocter Theatre

is now equipped with a cutting-edge Hearing Loop system! This is a momentous milestone in our ongoing work towards universal accessibility.

This project was made possible with a significant contribution from the Shocter Family, community donations, and the support of Hearing Loops Canada. Thank you to our generous partners who help make the Citadel a place where everyone can belong!



# WELCOME TO ***JERSEY BOYS!***

We are thrilled to share this incredible musical with you! This story of the life and career of Frankie Valli and the Four Seasons is one of the most successful musicals ever produced. *Jersey Boys* played on Broadway for 12 years and won 4 Tony Awards, including the Tony for Best Musical. It has played across the world including the UK, Las Vegas, Japan, Dubai, China, Australia, Singapore and South Africa. Grossing more than \$2 billion worldwide, it was even recently adapted into a successful film.

Citadel fun-fact: The Broadway production of *Jersey Boys* was directed by Canadian Des McAnuff. Des was also the Artistic Director of the Stratford Shakespeare Festival, where Daryl spent 3 years as his assistant director. Small world!

We are excited to welcome Julie Tomaino as the director of this brand-new, Citadel-built production of *Jersey Boys*, along with an incredible cast and creative team. We know you're going to love this production!

We also recently announced our 2023/24 Season which includes great musicals including: *Little Shop of Horrors*, *The Sound of Music*, and the return of *SIX!* We hope you'll join us for the entire season.

**Enjoy the show!**



  
**Sarah Pocklington**  
EXECUTIVE DIRECTOR



  
**Daryl Cloran**  
ARTISTIC DIRECTOR



# DIRECTOR'S NOTES

## FROM JULIE TOMAINO

As we move into 2023 and beyond, I'm so grateful that live theatre is back and that we are able to gather and enjoy stories again. The story of Frankie Valli and The Four Seasons is told in the most beautifully crafted, brilliantly complex script that just moves - in more ways than one.

*Jersey Boys* is a show about the rise of fame and the inevitable fall that comes when success is too big, too fast, at too young an age, and with no support. It's about young guys from the street working toward a dream, reaching for the stars, and for better or worse, never forgetting where they came from. It's about the music. It's about family. It's about the cost of loyalty. It's about chasing that need to satisfy a craving so deep in your soul that nothing quite quenches it, except more and bigger. It's about finding your way home, in whatever way that means to you. The Four Seasons pride themselves on being music for the people. Their music was before my time, but throughout this process I've found myself identifying bits of my life with various songs. Their music truly is timeless.

I have so many people to thank. Thank you Daryl for giving me the opportunity to direct at The Citadel and for trusting me with this enormous beast of a show. Thank you Gianna Vacirca, Michelle Chan, and Steven Greenfield for being my confidants and my collaborators. Thank you to all the designers, production staff, management, and everyone at the Citadel for your contributions to this show. Thank you to the incredible cast for going on this ride with me. And thanks to you, the audience, for supporting live theatre.



# Sparkling creative minds and powering a bright future

Proud to be the Season Sponsor of the Citadel Theatre for over 10 years.

**Capital  
Power**



[capitalpower.com](http://capitalpower.com)







# VANCE AVERY

BOB CREWE,  
ENSEMBLE

UNDERSTUDY:  
GYP DECARLO, ENSEMBLE

Vance is an Edmonton born actor. Previously: *Hadestown, A Christmas Carol* (Citadel Theatre); *Sweeney Todd, Women On The Verge* (Plain Jane); *Mamma Mia!, Lend Me A Tenor, Jesus Christ Superstar, Rock Of Ages* (Mayfield). Canada/US: *Les Miserables* (Mirvish); *Cats* (Really Useful Group); *Joseph and The Amazing Technicolor Dreamcoat* (LiveEnt); *Chicago* (Neptune); *The Black Rider* (Ahmanson, LA). Broadway: *Cabaret* (Roundabout, Tony Award) also performing the role of Emcee on Broadway, South Korea and Japan; *Sweet Charity In Concert* (Lincoln Centre); *A Connecticut Yankee* (Encores!); *My Favourite Broadway: Love Songs* (PBS).



# DEVON BRAYNE

NICK MASSI

Devon Brayne (he/him) is an award-winning actor and collaborator based out of Calgary, Alberta. *Jersey Boys* marks Devon's debut with Citadel Theatre! Other select credits include: *Million Dollar Quartet* (Betty Mitchell Award, Critics Choice Award Winner); *A Christmas Carol* (Theatre Calgary); *Million Dollar Quartet* (Mayfield Theatre/NWT); *Forever Plaid* (Stage West Calgary); *Blockbuster, Razzle Dazzle, Rockers Gone Country, Twist and Shout, The Ritz!, Country Gold* (New West Theatre); *Sissy Duckling, Birth of Casper G. Schmidt* (Theatre Outrè). You can find Devon touring his own Johnny Cash Tribute shows across Alberta.





# BILLY BROWN

JOEY,  
ENSEMBLE

UNDERSTUDY:  
NORM WAXMAN, NICK DEVITO,  
HANK MAJEWSKI, ENSEMBLE

Billy Brown is an actor and singer from Edmonton, Alberta. He is a graduate of MacEwan University's Theatre Arts Program and the University of Alberta's BFA in Acting. Previous credits include: *Ragtime: A Concert Performance* (Theatre Calgary); *Romeo and Juliet*, *A Midsummer Night's Dream*, *The Two Gentlemen of Verona* (Theatre Calgary's Shakespeare by the Bow); *Love's Labours Lost* (Freewill Shakespeare); *Rumpelstiltskin* (Alberta Musical Theatre Company). Billy would like to thank the Citadel Theatre for this amazing opportunity and hopes the audience enjoys the performance.



# SAMANTHA CURRIE

LORRAINE,  
ENSEMBLE

Samantha Currie (She/Her) is a Calgary based artist making her Citadel Theatre debut.

Samantha is a performer, director, teacher, and voiceover artist. A graduate of AMDA in New York, she has performed throughout Canada and the US. Favourite past productions: *Million Dollar Quartet* (Theatre Calgary); Director/ *Disney's Descendants* (StoryBook Theatre); *SCOPE* (Lunchbox Theatre); *Little Women, Ring of Fire, Anne* (Chemainus Theatre Festival); *Ring of Fire* (Western Canada Theatre/CTF); *The Music Man* (Theatre Under the Stars). Up next: Director, *Ella Enchanted* (Storybook Theatre). Thank you for supporting live theatre and enjoy the show! Thank you to my amazing family, Alex, Ceci, Shep and Flash for always cheering me on. And to the incredible Greenfields who made everything more fun here in Edmonton.





# SHELDON ELTER

GYP DECARLO,  
ENSEMBLE

Sheldon's credits include: *Metis Mutt* (One Little Indian Productions); *Sweeney Todd* (Plain Jane Theatre); *Where the Blood Mixes, King Lear/ Queen Goneril* (Soulpepper Theatre); *Ministry of Grace* (Belfry Theatre); *BEARS, After The Fire* (Punctuate! Theatre); *The Comedy Company* (Shadow Theatre); *Dear Rita, Stories From the Red Dirt Road, Martin Guerre* (Charlottetown Festival); *Evangeline* (Citadel Theatre/ Charlottetown Festival); *Crazy For You* (Citadel Theatre/Theatre Calgary); *A Christmas Carol, Alice Through The Looking Glass, One Man Two Guvnors, Julius Caesar, A Prairie Boy's Winter, and Vimy* (Citadel Theatre); *The Crackwalker* (Kill Your Television); *Tartuffe, Sound of Music, Enron* (NAC); *L'Homme de la Mancha* (L'Unithéâtre); *HROSES: An Affront to Reason* (Maggie Tree); *NEVERMORE* (Catalyst Theatre), *HAIR The Musical, Shear Madness, The 25th Annual Putnam Spelling Bee, The Buddy Holly Story, The Full Monty* (Mayfield Dinner Theatre).



# DANIELA FERNANDEZ

MARY DELGADO,  
ENSEMBLE

Daniela Fernandez (she/her) is a Latin-Canadian actor, singer, dancer and emerging sound designer/ producer. She is a graduate of the Grant MacEwan Theatre Arts program and inaugural recipient of the RBC Horizon Emerging Artists Mentorship Program for Sound Design at the Citadel Theatre. Recent credits include: *A Christmas Carol* (Citadel Theatre/ Performer), *The Wolves* (The Maggie Tree/ Performer), *Mamma Mia!* (Mayfield Dinner Theatre/ Performer), *Smoke* (Tiny Bear Jaws/ Sound Designer). You can find Daniela performing next in Vancouver for the Canadian premiere of *Beautiful: The Carole King Musical* (Arts Club).



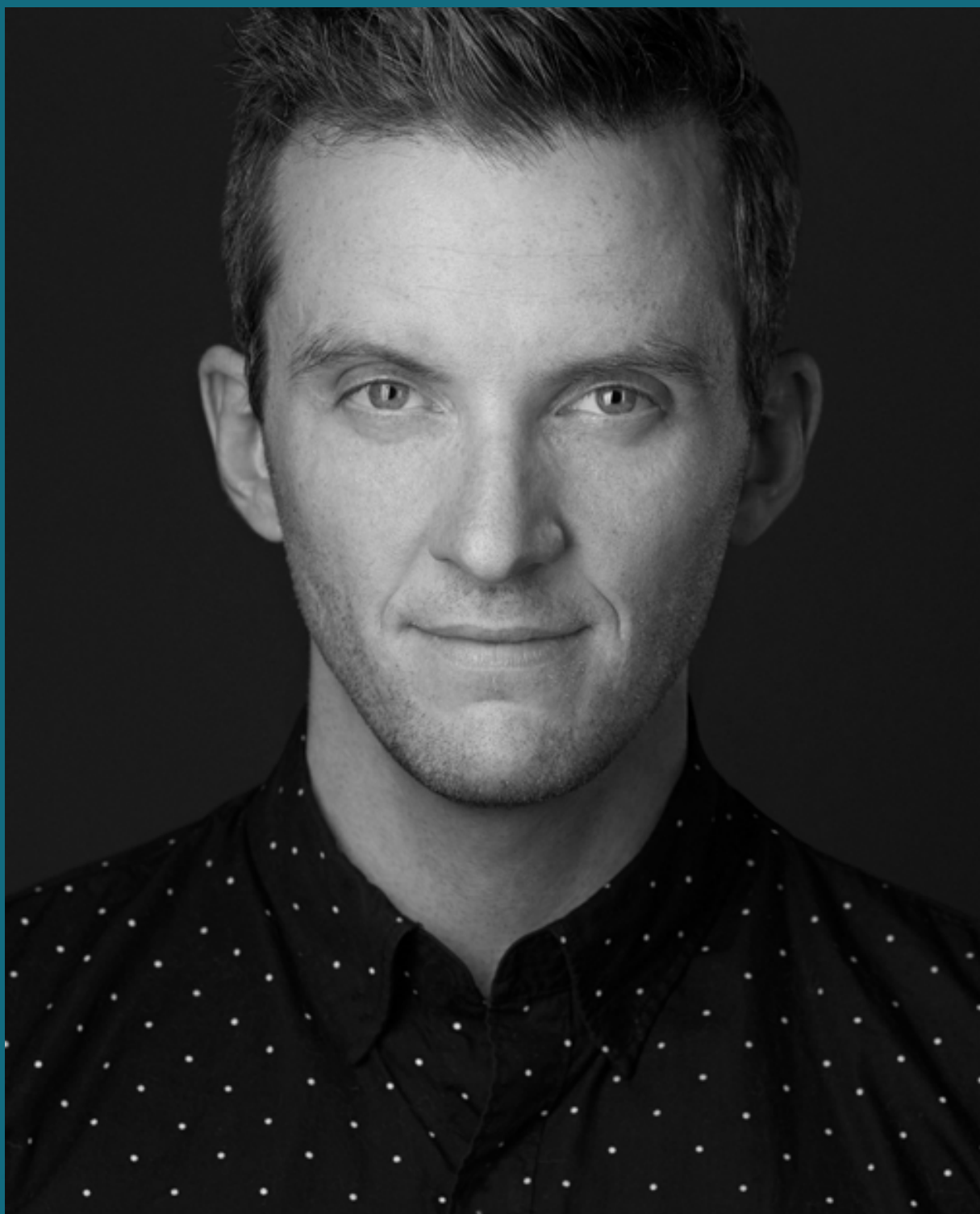


# JORDAN GOODRIDGE

BARRY BELSON,  
HAL MILLER,  
ENSEMBLE,  
DANCE CAPTAIN

Jordan is a driven and versatile artist raised in Brantford, Ontario. At an early age, he knew that he wanted to be a performer and spent his childhood training in dance as well as classical voice and musical theatre; his credits include, *Chicago* (Stratford Festival); *In Studio with Britta Johnson* (Theatre Sheridan); *The Music Man* (Drayton Entertainment); *Beauty and the Beast*, *Oliver!* (Theatre Norfolk). Training: Sheridan College Honours Bachelor of Music Theatre (on-going) Awards: Stratford Festival – Tyrone Guthrie award, Sheridan College - Dance award, Vocal music award (2021). BIG Thank you to the awesome team at TH, my family, and friends for their constant support and to Irena, Gill, and Lisa for being the BEST teachers a boy could ask for. Love to Jada, Diggs, and Timothy.





# ANDREW MACDONALD- SMITH

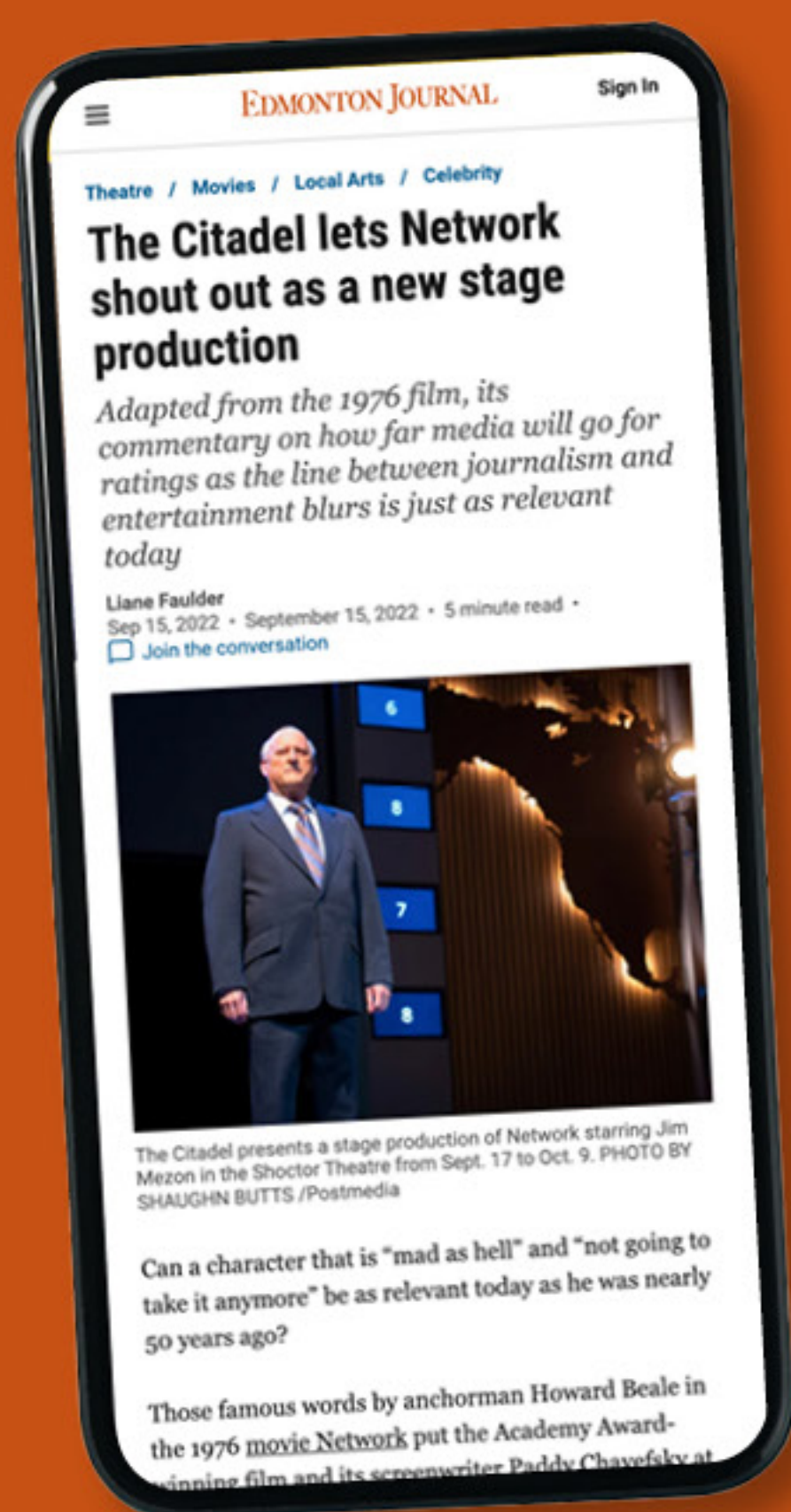
NORM WAXMAN,  
NICK DEVITO,  
HANK MAJEWSKI,  
ENSEMBLE

Andrew is an actor, producer, and puppeteer. He is also the Co-Artistic Director of Edmonton theatre company, Teatro Live! (formerly Teatro La Quindicina). Previous credits include: *Peter Pan Goes Wrong*, *9 to 5*, *Matilda*, *Crazy for You*, *Shakespeare in Love*, *Mary Poppins*, *Avenue Q*, *One Man, Two Guvnors* (Citadel); *Fever Land*, *Witness to a Conga*, *Pith!* (Teatro); *Best Brothers*, *The Comedy Company* (Shadow); *Forever Plaid*, *Shear Madness*, *Wizard of Oz* (Mayfield); *Avenue Q*, *Matilda* (Arts Club); *Dirty Rotten Scoundrels*, *Crazy for You* (Theatre Calgary). Many thanks and love to Mum and cuore mio Louise.



EDMONTON JOURNAL IS A PROUD SUPPORTER OF  
THE CITADEL THEATRE

# ALL THE NEWS YOU NEED



Get the Edmonton Journal and enjoy the latest local, national and entertainment news from your community and across Canada.

SUBSCRIBE NOW & SAVE  
[EDMONTONJOURNAL.COM/CITADEL](https://edmontonjournal.com/citadel)

THE  
CITADEL  
THEATRE

EDMONTON  
JOURNAL





# CHRISTINA NGUYEN

FRANCINE,  
ENSEMBLE,  
FIGHT CAPTAIN

Christina is a mixed-race actor, singer and dancer hailing from amiskwaciwâskahikan (Edmonton). She is delighted to be back at the Citadel to share this story! Selected credits include: *A Christmas Carol*, *Clue* (Citadel Theatre); *Alina*, *Michael Mysterious* (Pyretic Productions); *Much Ado About Nothing*, *Winter's Tale* (Freewill Players); *Sprouts!* (Concrete Theatre); *Here There Be Night* (Workshop West Theatre); and *Chrysothemis*, *Revolt. She Said. Revolt Again.* (Studio Theatre). Christina is a graduate of the University of Alberta's BFA Acting Program. She would like to thank her husband Chris, mother Susan, and all the friends and family who have supported her. She would like to dedicate her performance to her father.





# KALE PENNY

TOMMY DEVITO

Kale Penny (he/him) is a west coast actor living in Stratford, ON with his wife and cats. Previous credits include: *Million Dollar Quartet* (Citadel, Theatre Calgary, Theatre Aquarius, Arts Club); *Jersey Boys* (Thousand Islands Playhouse); *Newsies*, *Man Of La Mancha*, *Rock Of Ages*, *Sleeping Beauty: The Panto* (Drayton Entertainment); *Rock Of Ages*, *Godspell* (Arts Club). Kale also wrote the music and co-starred in *The Tracks*, premiering at Here For Now Festival in 2021, and his music can be heard on all streaming platforms. Thanks to the TH family and love to L, L, and R.



# HAL WESLEY ROGERS

JOE LONG, ENSEMBLE

UNDERSTUDY:

JOEY, BARRY BELSON,  
HAL MILLER, ENSEMBLE

Originally from Leduc, Hal began performing at the Foote Theatre School as a teen. He earned his BFA in Theatre Performance from Simon Fraser in Vancouver. Also a composer and playwright, he was one of the Citadel's 2022 RBC Horizon Emerging Artists. Previous credits: *Hadestown* (Citadel Theatre); *Mamma Mia!*, *Sister Act*, *Jesus Christ Superstar*, *Hair*, and *Hairspray* (Mayfield); *The Best Laid Plans: A Musical* (Touchstone/Patrick Street); *Dreamgirls* (Arts Club); *The Rocky Horror Show* (Magnus); *Buddy - The Buddy Holly Story* (Thousand Islands Playhouse & Western Canada); *The Music Man* (TIP). Hal would like to honour his late Aunt, Lorna Daniel, who was one of his biggest supports from his earliest days.





# JASON SAKAKI

BOB GAUDIO

Jason Sakaki is a Vancouver based actor, photographer, and teaching artist. Previous credits include: *Shakespeare in Love*, *Taming of the Shrew* (Bard on the Beach); *The Sound of Music*, *The Matchmaker* (Arts Club); *The King and I* (Gateway Theatre); *Guide My Way* (Urban Ink). Previous Film/TV credits: *Honor Society* (Paramount+); *Devil in Ohio* (Netflix); *Riverdale*, *iZombie* (CW); *Christmas is You* (GAC Family). Jason is set to appear in the feature film *Prom Pact* (Disney+) and recurring in *Lucky Hank* (AMC) premiering this spring. Thanks to my family <3



# FARREN TIMOTE0

FRANKIE VALLI

Farren's acting credits include *The Fiancée*, *As You Like It*, *Shakespeare in Love*, *Peter and the Starcatcher*, and *Monty Python's Spamalot* (Citadel Theatre); *The Light in the Piazza* (Theatre Calgary); *Coriolanus* (Freewill Shakespeare Festival); *A Grand Time in the Rapids* (Teatro La Quindicina); *Forever Plaid* (Mayfield Dinner Theatre); and, *Made in Italy* (Western Canada Theatre/Arts Club), which he has been touring across Canada since 2016. Farren has received a Jessie Richardson Award for his performance in *Made in Italy*, and four Elizabeth Sterling Haynes Awards, two of which were for his performances in *Spamalot* and *Made in Italy*. In 2018, he was the recipient of a Broadwayworld.com Award for his performance in *Forever Plaid*. In 2015, he was included in Avenue Magazine's prestigious list of Edmonton's Top 40 Under 40, in recognition of his artistic contributions to the city. Farren can next be seen at Teatro Live! in *Listen, Listen*, and next season on this very stage in *Made in Italy*.



# NEXT UP IN OUR HOUSE SERIES



## GOING SOLO

A CELEBRATION OF SINGERS WHO LEFT THE BAND TO FIND SUCCESS ON THEIR OWN

A celebration of singers who left the band to find success on their own! Diana Ross, Paul Simon, Lauryn Hill, Beyoncé, Paul McCartney, Sting, Harry Styles and Stevie Nicks. Just like Frankie Valli, many lead singers have dared to march to their own beat and have forged astonishing musical careers as solo acts. Starring Edmonton's Farren Timoteo, Daniela Fernandez, Christina Nguyen and Steven Greenfield (*Jersey Boys*), this genre-bending concert will feature songs by an incredible variety of pop, folk, country, soul and R&B artists that topped the charts by going solo!

**GET YOURS NOW!**  
**780.425.1820**

**MORE INFO AT**  
**CITADELTHEATRE.COM**



# NIKO COMBITSIS

UNDERSTUDY:  
FRANKIE VALLI,  
BOB GAUDIO

Niko is thrilled to be making his Citadel debut!  
A million thank yous to Jimbo, Danny, Katie,  
Adrian, and the team at TH. Milchamah! Dare  
Est Recipere. 2 Corinthians 4:16-17





# TROY GOLDTHORP

UNDERSTUDY:

NICK MASSI, TOMMY DEVITO,  
BOB CREWE, JOE LONG,  
ENSEMBLE

Originally from Calgary, and a Toronto Randolph College for the Performing Arts graduate, Troy has been performing on stages across Canada and internationally for over 10 years. Selected credits: *9 to 5* (Citadel Theatre), *Ragtime: In Concert* (Theatre Calgary/Calgary Philharmonic), *Mamma Mia!*, *Anne of Green Gables* (The Charlottetown Festival), *Evita* (Vancouver Opera), *We Will Rock You* (International/RCCL), *Peter Pan In Wonderland*, *Sleeping Beauty* (Ross Petty Panto), *Moby Dick*, *The Inventor* (Calgary Opera), *West Side Story* (Rainbow Stage), *Footloose* (Drayton Entertainment), *Cannibal! The Musical* (Panasonic Theatre), *The World Goes Round* (Stage West Calgary), and *Crossing Swords* (Forte Musical Theatre Guild).



# KARLEE SQUIRES

UNDERSTUDY:  
LORRAINE, FRANCINE,  
MARY DELGADO,  
ENSEMBLE

Karlee Squires is thrilled to return to Edmonton and to be making her debut at the Citadel Theatre for *Jersey Boys*. Born and raised in amiskwacîwâskahikan (Edmonton), Karlee (she/her) is a graduate of AMDA College and Conservatory, NY/LA, with a BFA in Music Theatre. Select theatre credits: *Manson's Girls* (New Musical Institute); *The Little Mermaid* (SoundStage Live); *Heathers* (YA4Ever); *Dreamgirls* (Cupcake Theatre); *Sugar* (Musical Theatre Guild); & Royal Caribbean Cruise Lines. Karlee is thankful to family and friends for encouraging her to follow her dreams.

[www.KarleeSquires.com](http://www.KarleeSquires.com)



Emery Jamieson LLP is the proud  
production sponsor of the Citadel  
Theatre's *Jersey Boys*



EMERY  
JAMIESON  
LLP

[emeryjamieson.com](http://emeryjamieson.com)

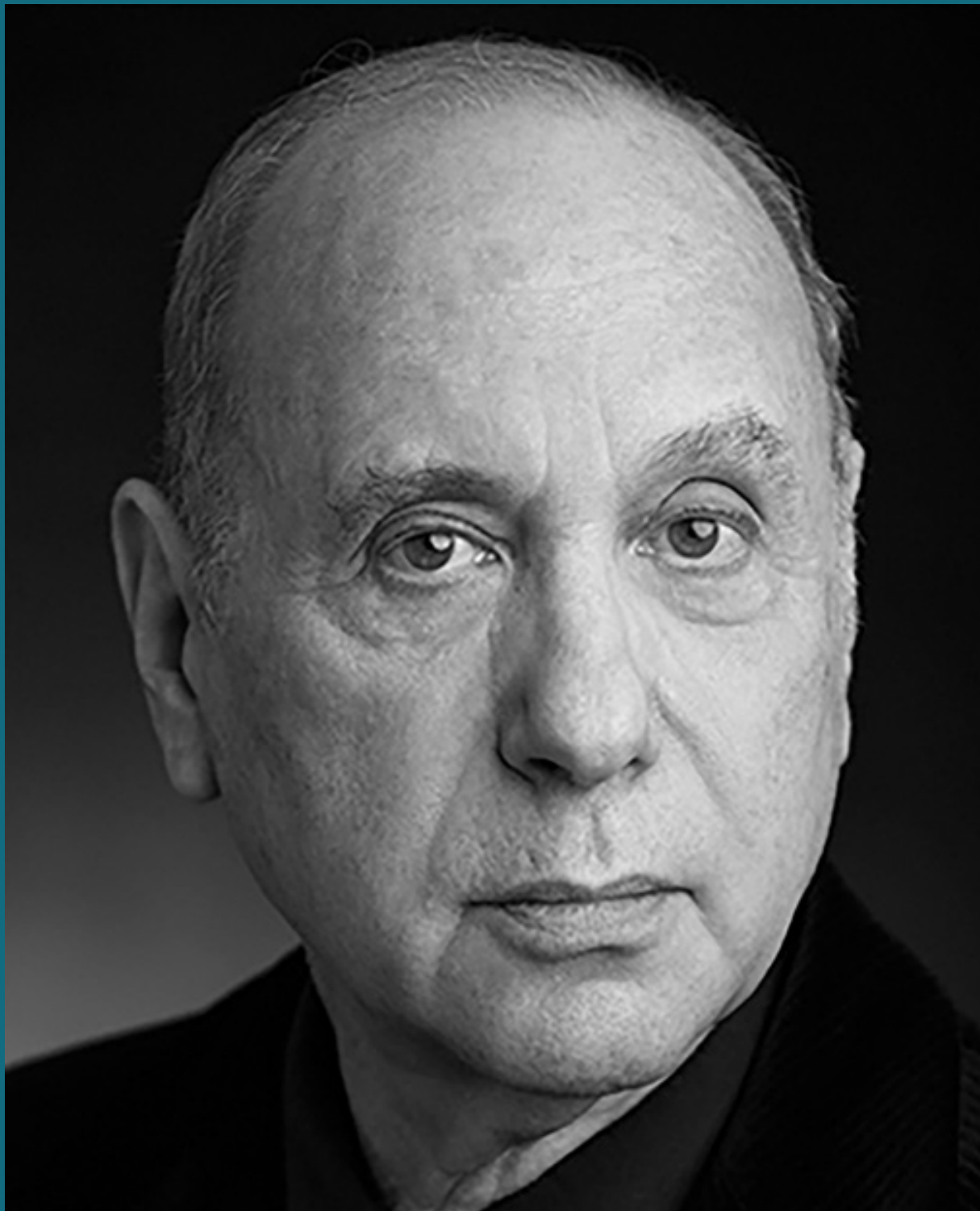
FOR THE  
LOVE OF  
THE SHOW.

There is nothing like live theatre. As soon as the lights go down, the transformation begins, and you are taken to another place beyond your everyday reality. Enjoy your escape.

WITH LOVE FROM

EPCOR



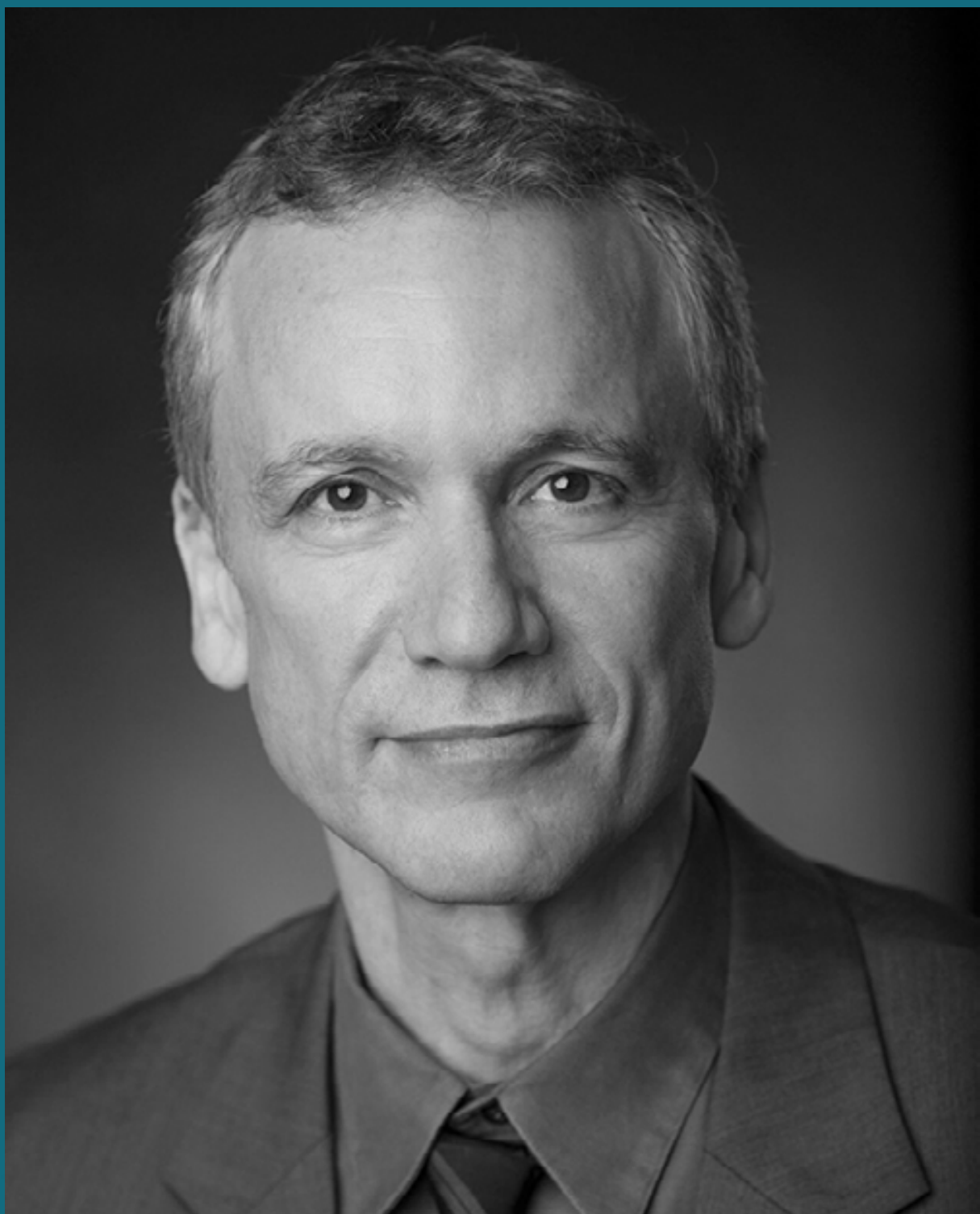


# MARSHALL BRICKMAN

PLAYWRIGHT

Films: (author or co-author) *Sleeper*, *Annie Hall* (AA), *Manhattan*, *Manhattan Murder Mystery*; (writer/director) *Simon*, *Lovesick*, *The Manhattan Project*, *Sister Mary Explains it All*. Television: *The Tonight Show with Johnny Carson* (head writer); *The Dick Cavett ABC late night show* (head writer/co-producer). Mr. Brickman entered show business as a musician, first as a member of the folk group the Tarriers and then, along with John and Michelle Phillips, as one of the New Journeymen, which re-emerged a year later (Brickman having moved onto saner pursuits) as The Mamas and the Papas. Brickman's recording (with Eric Weissberg) of the soundtrack of *Deliverance*, recorded in 1963, achieved gold status twice and remains a healthy seller around the world forty years later. Mr. Brickman has published in The New York Times, The New Yorker, Playboy, and other periodicals.

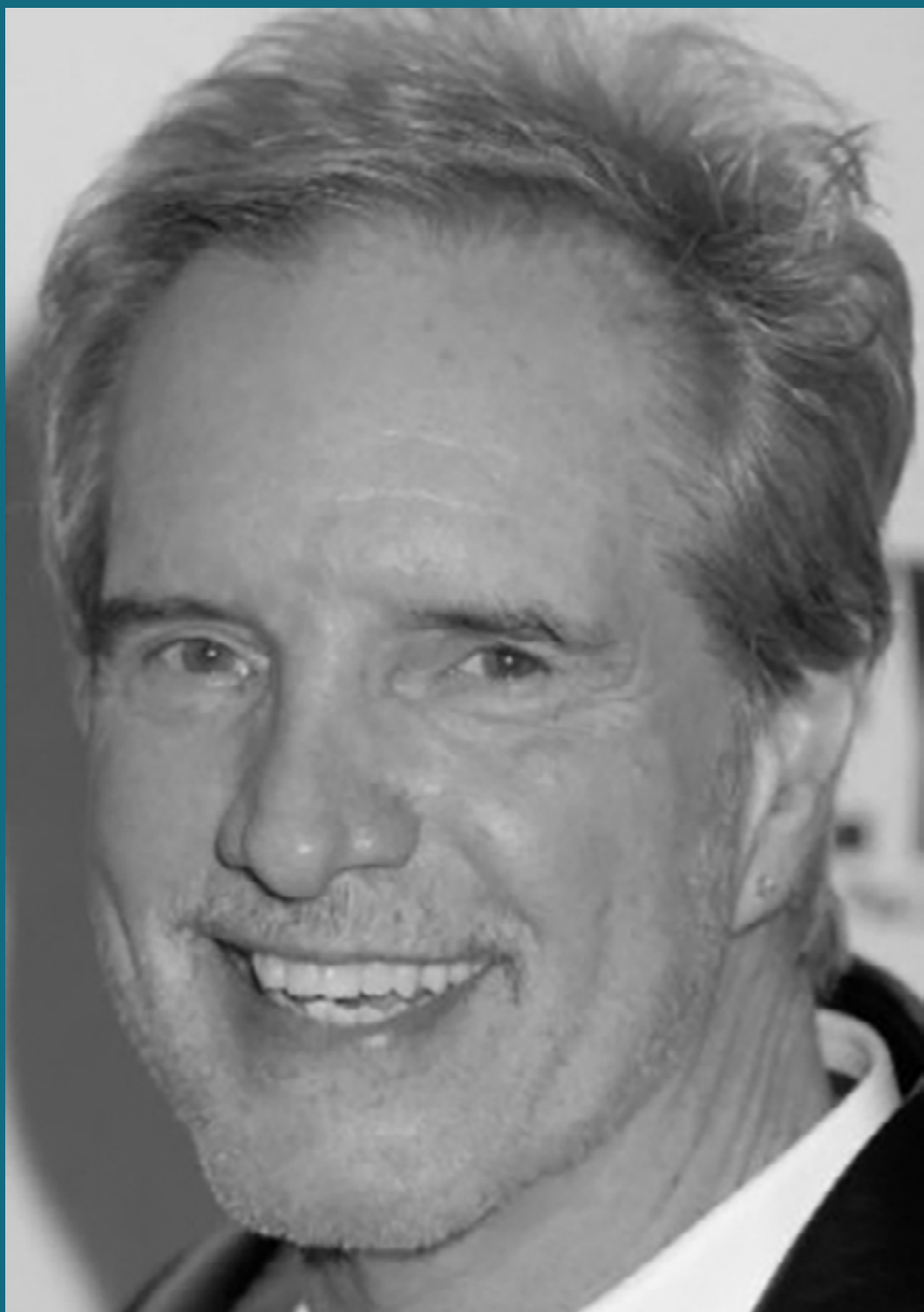




# RICK ELICE

PLAYWRIGHT

Rick Elice is a tony-nominated writer. Elice earned a BA from Cornell University, an MFA from the Yale Drama School, and in 1980-81 was a Teaching Fellow at Harvard. Elice, along with Marshall Brickman wrote the book for the acclaimed *Jersey Boys* and received a Tony nomination and a Drama Desk nomination for best book. He then went on to write *Peter and The Starcatcher*. *Peter and the Starcatcher* received nine Tony Award nominations, more than any new American play in the history of the Tony Awards. The play ended up winning five Tony Awards. Elice again collaborated with Brickman once again, this time writing the book for the musical, *The Addams Family*, which has become a fan-favorite musical across high schools in America.



# **BOB GAUDIO COMPOSER**

Bob wrote his first hit, "Who Wears Short Shorts," at 15, for the Royal Teens then went on to become a founding member of the Four Seasons and the band's principal songwriter. He also produced the hit "You Don't Bring Me Flowers" for Neil Diamond and Barbra Streisand (Grammy nomination, Record of the Year), as well as six albums for Diamond, including *The Jazz Singer*. Other producing credits include albums for Frank Sinatra, Marvin Gaye, Diana Ross, Michael Jackson, and the soundtrack for the film *Little Shop of Horrors*. Several songs co-written with Bob Crewe have been cover hits for such artists as the Tremeloes ("Silence Is Golden") and the Walker Brothers ("The Sun Ain't Gonna Shine Anymore") Lauren Hill ("Can't Take My Eyes Off You"). With his wife, Judy Parker, Gaudio produced and co-wrote the *Who Loves You* album for the Four Seasons, and one of Billboard's longest-charted singles (54 weeks), "Oh, What A Night." A highpoint in his career came in 1990, when, as a member of the original Four Seasons, Gaudio was inducted into the Rock & Roll Hall of Fame. In 1995, he was inducted into the Songwriters Hall of Fame, which hailed him as "a quintessential music-maker." To this day, Bob Gaudio and Frankie Valli still maintain their partnership...on a handshake.





## **BOB CREWE**

**LYRICIST**

Bob Crewe and music partner Frank Slay became independent writer-producers when the category hadn't yet been invented. In 1957 they wrote and produced "Silhouettes" for The Rays, skyrocketing to #1. Suddenly, producers in demand, they launched Freddie Cannon's "Tallahassee Lassie" and Billy & Lillie's "Lah Dee Da." Crewe's 1960's solo unprecedented producing success with The Four Seasons birthed a new sound, striking a major chord in American Pop. "Sherry," "Big Girls Don't Cry," "Walk Like a Man," "Candy Girl," "Ronnie" – all smashes! When lead Frankie Valli demanded a solo turn, Crewe & Bob Gaudio wrote and Crewe produced "Can't Take My Eyes Off Of You," eventually becoming the century's fifth most played song. Crewe ran hot with artists from Vicki Carr, Oliver, Lesley Gore to Mitch Ryder, co-writing with Charles Fox the soundtrack for Jane Fonda's film, "Barbarella". Then his own Bob Crewe Generation exploded with Music To Watch Girls By. In 1972 Bob was in L.A., where he revived Frankie Valli with "My Eyes Adored You" by Crewe & Kenny Nolan. They also co-wrote Patti LaBelle's "Lady Marmalade" (#1, July '75) – to re-hit again from the soundtrack of Moulin Rouge (#1, June '01).



# JULIE TOMAINO

DIRECTOR AND  
CHOREOGRAPHER

Julie (she/her) is thrilled to be back at The Citadel after choreographing *9 to 5* and *Once!* She is a theatre director, a choreographer, and an educator, and has won both a Jessie Award and a Dora Award for her work. Favourite credits include: *Kinky Boots* (Arts Club), *Hunchback* (The Rev), *Newsies* (TUTS), *Billy Elliot* (Theatre Calgary), and *Crazy For You* (Gateway Theatre). Former Radio City Rockette. Thank you to Daryl, to Gianna, and to the cast and crew for joining me on this wild ride. Up next: *Margaritaville* (Theatre Calgary). Find out more at [www.julietomaino.com](http://www.julietomaino.com).





# STEVEN GREENFIELD

MUSIC DIRECTOR

Born and raised in Mohkínstsis (Calgary), and now proudly calling amiskwacîwâskahikan (Edmonton) home, Steven (he/him) is a Jessie Award-winning music director, musician and actor. Recent credits include *The Wrong People Have Money* (Shadow); *The Dreamer's Cantata* (Edmonton Fringe/Plain Jane); *Clue, A Christmas Carol, Once* (Citadel); *Million Dollar Quartet* (Theatre Calgary); *Tune to A* (Expanse/Azimuth). Upcoming: *Going Solo* (The Citadel House Series). Thanks to Julie and Daryl. Special thanks to family, friends, Jessie, Edgar and Gotham for their love and support. [www.stevengreenfield.ca](http://www.stevengreenfield.ca).



# GILLIAN GALLOW

CO-SET AND  
PROPS DESIGNER

Gillian is a Toronto-based set and costume designer who was last at the Citadel designing costumes for *Mary Poppins*. Other notable credits include costume designs for the Canadian Opera Company's world premiere of *Hadrian* in 2018 and *Louis Riel* in 2017. Her work has also been seen at Shaw Festival, Stratford Festival, Canadian Stage, Royal Manitoba Theatre Centre, and National Arts Centre. Gillian has been awarded four Dora Mavor Moore awards, she's the 2018 recipient of the Virginia and Myrtle Cooper Award in Costume Design and in 2021 she was awarded the Siminovitch Prize.





# BEYATA HACKBORN

CO-SET AND  
PROPS DESIGNER

Beyata is an Alberta-based theatre designer, currently living in a household of beloved friends & dogs. She delights in movement-driven pieces, new works, and shows that embrace the thoroughly strange - although she has an embarrassingly tender spot for musicals (particularly Sondheim). Recently, she's been splitting her time between The Shaw Festival and contracts closer to home. Select design credits: *Bright Lights, Overruled* (Shaw Festival), *Metronome* (Workshop West), *Sleight of Mind* (Western Canada Theatre), *EDAY* (Serial Collective); *Freaky Green Eyes* (Emma Houghton, Fringe Theatre); Upcoming: *Playboy of the Western World*, *Village Wooing* (Shaw Festival). She can juggle, sort-of. [www.beyatahackborn.com](http://www.beyatahackborn.com).





# PRIDE AND PREJUDICE

MAR 11 - APR 02, 2023

**THE  
CITADEL  
THEATRE**

**BUY YOUR  
TICKETS  
TODAY!**

[citadeltheatre.com](http://citadeltheatre.com)





# LEONA BRAUSEN

COSTUME  
DESIGNER

Leona is a Sterling Award winning costume designer, improviser, performer and artist who has acted and deigned for Teatro La Quindicina since 1982 including Stewart Lemoine's *Pith!* from here to Off-Broadway. Other design credits include *Clue*, *Clybourne Park*, *Betty's Summer Vacation*, *Heaven* (Citadel Theatre); *Vanya and Sonia and Masha and Spike*, *Annapurna*, *The Comedy Company* (Shadow Theatre); *9 to 5: The Musical*, *Hairspray*, *Sister Act* (Mayfield Theatre). Film credits include Trevor Anderson's *The Man That Got Away* and *Before I Change My Mind*. Window Installation Hero Material featuring four notable Canadian Women.



# JARETH LI

LIGHTING  
DESIGNER

Born in Singapore, Jareth is a stage designer based in Toronto by way of Calgary. He has a love for new work that examines identity politics, culture, and heritage. Select credits include: *Controlled Damage* (Grand Theatre); *Every Little Nookie* (Stratford Festival); *Peter's Final Flight* (Ross Petty Productions); *The Hours That Remain* (Theatre Aquarius); *Three Women of Swatow* (Tarragon Theatre); *The Home Project*, *The Wolves*, *Casimir and Caroline*, *Punk Rock* (The Howland Company); *Ring of Fire* (Citadel Theatre). Jareth is a member of IATSE 659 – The Associated Designers of Canada.

*The services of Jareth Li and Even Gilchrist were made possible through the Associated Designers of Canada Mentorship Program as funded by the Government of Canada.*





# BRIAN KENNY

SOUND  
DESIGNER

Brian is a designer from Newfoundland and Labrador and is a graduate from The National Theatre School of Canada and Sheridan College. Selected credits include: *Fall On Your Knees* (Vita Brevis Arts); *Come From Away* in concert (Mirvish, Marquis Ent); *Billy Elliott, The Rocky Horror Show, The Music Man, Little Shop of Horrors* (Stratford Festival); *Elf, Grow, Mary Poppins* (Grand Theatre); *Between Breaths, The Colony of Unrequited Dreams* (Artistic Fraud of Newfoundland). Brian would like to dedicate this work to Peter McBoyle, to whom he owes a great deal.





# MORGAN YAMADA

FIGHT  
DIRECTOR

Morgan works as an actor, fight director, arts educator and Co-Artistic Producer of Azimuth Theatre. Her focus lies in new work and physical-based theatre. With the Citadel, projects include *Clue*, *The Finacée* and *9 to 5: The Musical* as a Fight Director, *Almost a Full Moon* as an Assistant Director, *Delay* - The Horizon Lab and *Peter and the Starcatcher* as an actor. She is so excited to be joining the *Jersey Boys* Team! For more on her past, present, and upcoming work, check out her website: [www.morganyamada.com](http://www.morganyamada.com)



# GIANNA VACIRCA

ASSISTANT  
DIRECTOR AND  
ASSISTANT  
CHOREOGRAPHER

Gianna Vacirca is a dancer, actor, choreographer, performing artist, and movement teacher. She is also an Italian pastaia and the creator of Bell'uovo, a bespoke naturally colourful handmade pasta business based here in Edmonton (@bell\_uovo). Coming up, catch her in *Pride and Prejudice* here at the Citadel and in *Sexual Misconduct of the Middle Classes* at Theatre Network. Previous credits include: *Bears* (Punctuate! Theatre/Dreamspeakers/ Native Earth Performing Arts); *Jane Eyre, Miss Bennet: Christmas at Pemberley, A Christmas Carol* (Citadel Theatre); *Noises Off* (Mayfield Dinner Theatre); *Vague Harvest, Ludicrous Pie, A Second Round of Seconds, Evelyn Strange, Deathtrap* (Teatro Live!); *Blood: A Scientific Romance* (The Maggie Tree); *Hamlet, Two Gentlemen of Verona, Comedy of Errors, The Winter's Tale* (Freewill Shakespeare Festival). Many thanks to Julie, Oz, the Kits.





# LARISSA POHO

ASSISTANT  
MUSIC DIRECTOR

Larissa is a multidisciplinary performer, production designer, visual artist and tattooist. She also teaches dance for the Citadel's Young Company, and is the newly appointed Artistic Director of the Vohon Ukrainian Dance Ensemble. Select credits include: *Once, All Because I'm a Woman* (Citadel Theatre); *Infinity* (Theatre Network); *VEGAS LIVE, Canada 151* (Mayfield); *10 out of 12* (WildSide); *Dreamer's Cantata* (Plain Janes); Lighting Design for *An Homage to Billie Holiday* (Ballet Edmonton); *La Raccourcie, Les Neiges, Simone et le whole shebang* (L'uniTheatre); and Music Direction for the Canadian national tour of *Barvinok* (Pyretic Productions). [www.larissapoho.com](http://www.larissapoho.com).



# ALISON MATTHEWS

DIALECT COACH

Alison currently teaches Voice in the drama department at the University of Alberta. She is also Head of Coaching for the Bard on the Beach Shakespeare Festival in Vancouver, BC, where she has coached over 40 productions since 2008. She has three decades of professional acting experience, working in film and tv, theatre and voice-over. Previous coaching credits include *Arcadia*, *West Side Story*, *Sense and Sensibility* (Citadel); *Noises Off* (Arts Club); *Coriolanus*, *All's Well That Ends Well*, *Taming of the Shrew*, *Shakespeare in Love* (Bard on the Beach).





# **EVEN GILCHRIST**

**ASSISTANT  
LIGHTING DESIGNER**

Even is a queer and trans theatre designer and creator based in Treaty 6 territory. He recently went through University of Alberta's MFA Theatre Design program - feel free to check out other collaborations on his website [evengilchrist.com](http://evengilchrist.com). Previous design credits include: *#34* (Globe Theatre); *The Innocence of Trees* (Theatre Network); *Re:Construct* (RISER Edmonton/Donkey Dog Theatre); *Tune to A* (Expanse Festival); *Working: A Musical* (Citadel Young Company); *The Mountaintop, Bloomsday* (Shadow Theatre); *Puppet Pub Crawl* (Found Festival); *Love From Afar* (a Company of Fools); *All That Binds Us* (Azimuth Theatre). Thank you to Jareth Li, Cheryl Hoover, Jeff Osterlin, Whittyn Jason, and Mac Brock.

*The services of Jareth Li and Even Gilchrist were made possible through the Associated Designers of Canada Mentorship Program as funded by the Government of Canada.*



# MICHELLE CHAN

STAGE  
MANAGER

Michelle is the resident stage manager at the Citadel Theatre and feels lucky to be working with the amazing team here for the last 22 seasons. Some of her favourite past Citadel Theatre credits include: *Clue*, *9 to 5: The Musical*, *Peter Pan Goes Wrong*, *A Christmas Carol*, *Every Brilliant Thing*, *Ring of Fire*, *Once*, *Shakespeare in Love*, *West Side Story*, *Avenue Q*, *One Man, Two Guvnors*, *Spamalot*, *Private Lives*, *Beauty and the Beast*, *A Few Good Men*, *The Sound of Music*, *The Rocky Horror Show*, *August: Osage County*, *The Forbidden Phoenix*, *Sweeney Todd*, and *Mary's Wedding: A Métis Love Story*. Big thanks to Lore and Krystal.





# LORE GREEN

ASSISTANT  
STAGE MANAGER

Lore is thrilled to be back at the Citadel doing what she loves with such a great group of people. Selected credits include: *A Christmas Carol*, *West Side Story*, *Curious Incident of the Dog in the Night-Time*, *Sense & Sensibility*, *Hadestown*, *Silver Arrow*, *Peter Pan Goes Wrong* and *Clue* (Citadel Theatre); *Timothy Findley's The Wars*, *Mamma Mia!* and *Titanic: The Musical* (Grand Theatre); *Barvinok*, *Michael Mysterious* and *Alina* (Pyretic Productions). Lore is the resident stage manager for Pyretic Productions and holds a BFA in stage management from the University of Alberta. Slava Ukraini!



# KRYSTAL JOHNSON

APPRENTICE  
STAGE MANAGER

Krystal is an Edmonton based stage manager and holds a BFA in Production Stage Management from the University of Alberta. She is excited to work on her first Citadel show! Previous credits: *Sweeney Todd* (Plain Jane Theatre); *A Doll's House, Part 2* (Wild Side Productions); *A Midsummer Night's Dream, Measure for Measure, The Two Gentlemen of Verona, The Winter's Tale* (Freewill Shakespeare Festival); *The Drowsy Chaperone* (Triffo Theatre); *Candide* (Edmonton Opera); *Queen Lear is Dead* (Fox Den Collective); *Chrysothemis, Shakespeare's Dog, Revolt. She Said. Revolt Again., Middletown* (Studio Theatre).





 **Maclab**  
Properties Group

**MACLAB**  
Development Group



Cultivating community,  
connection, and  
inspiring our youth.





# THE CITADEL'S CORPORATE SEASON TICKET PACKAGE

We want you to be a part of the Citadel family – join our corporate subscription program and treat your clients and key staff members to world-class theatre! Ideal for small to medium-sized companies, corporate subscriptions are a ticket-based package that give you the flexibility to use your tickets in various ways.

## MEMBERS OF THE CORPORATE SEASON TICKET FAMILY

- ARC Business Solutions INC.
- Canada Place Dental
- EY LLP
- Felesky Flynn LLP
- Midnight Sun Financial INC.
- Rehoboth Christian Ministries

## RESTURANT & HOTEL PARTNERS

Season Ticket Holders (including Corporate) receive these amazing discounts from our partners\*

- **CONTINENTAL TREAT FINE BISTRO**  
10% Off All Menu items
- **ART GALLERY OF ALBERTA**  
\$3 off on the full price of a regular admission
- **EDMONTON SYMPHONY ORCHESTRA**  
10% off all regular Edmonton Symphony Orchestra or Winspear shows
- **THE WESTIN**  
15% discount on the standard rate

## JOIN TODAY!

Contact our Fund Development Team at (780)428-2141 or [rbokenfohr@citadeltheatre.com](mailto:rbokenfohr@citadeltheatre.com) or visit [citadeltheatre.com/buy-tickets/corporate-season-tickets](http://citadeltheatre.com/buy-tickets/corporate-season-tickets)

\*Subject to availability, conditions and restrictions may apply



# STUDENTS CLUB

PRESENTED BY canada  life™

Young people are integral to the artistic fabric of the Citadel Theatre, and we are committed to providing programs and initiatives that champion the development of their artistic identities. Students Club offers a unique glimpse into the world of professional theatre to a wide range of local junior and senior high school students. Prior to select performances of each of our mainstage shows, students participate in a highly engaging, interactive presentation with one of our region's talented theatre artists. Following the performance students stay for an informative talkback with members of the production's cast and crew.

Prior to seeing *Jersey Boys*, our Students Club workshops focused on choreography with Deviani Andrea! Students learned dance moves inspired by Frankie Valley and The Four Seasons – and we hope that they'll be step-touching and snapping the fingers all the way home!



About our guest artist: Deviani Andrea is a dance artist based in Amiskwaciwâskahikan/Edmonton. Originally from Mexico City, she holds a BA in Literature from the University of Mexico and studied at the Mexico City's Dance School and Ema Pulido's Dance Studio. Since landing in Canada, Deviani has worked as Movement Instructor for the Citadel Theatre, and as a guest teacher with

Azimuth Theatre. She has performed with Skirts Afire, Mile Zero Dance, Fringe Festival, Found Festival and Orchesis Dance Society and has choreographed for the Alberta Musical Theatre Company. She likes biking in the summer and skiing in the winter, brewing kombucha, and consuming content in different languages.

For more information on Students Club, or to become a part of the program, please contact

**[groupbookings@citadeltheatre.com](mailto:groupbookings@citadeltheatre.com)**



# WHAT WE BELIEVE

The Citadel Theatre is in the heart of amiskwaciwâskahikan ᐱᓄᕈᗵᖅᑦᑐᔭᒃᑲᓴᓂᓪᓰᓯᓇᑳᓚ (Edmonton, AB), and we are proud to call Treaty 6 territory home. As a regional theatre, it is integral that we ensure that the stories we tell, as well as the composition of our artists, board, staff, students, and audience are reflective of the diverse lived experiences in this dynamic city.

We commit to dismantling the systems of oppression that our organization has benefited from. We acknowledge our privilege as one of the largest arts organizations in Alberta, and one of the largest regional theatres in Canada; it is our responsibility to enshrine this commitment at the heart of our company. We pledge to be held accountable to this ongoing work with transparency and in dialogue with communities and all stakeholders.

We believe this work requires immediate and ongoing action and constant reflection. We will continue to build an anti-racism and anti-oppression intersectional framework through training, paid consultation, internal analysis, the engagement of an Equity, Diversity & Inclusion Committee, a commitment to Edmonton's 35//50 Initiative, and significant policy changes and accountability throughout the entire organization.

We are proud to be part of our city's vibrant theatre community and commit to working together with our colleagues to exchange knowledge and ensure lasting systemic change at the Citadel and throughout the arts community. We welcome and



celebrate all voices, all bodies, and all experiences.

This is a living statement that has been crafted by Citadel Theatre's Equity, Diversity & Inclusion Committee. If you have any questions, please contact:

[EDICOMMITTEE@CITADELTHEATRE.COM](mailto:EDICOMMITTEE@CITADELTHEATRE.COM)

## VISION STATEMENT

The Citadel Theatre believes in being Inclusive, Innovative, and International in our programming and practices

**INCLUSIVE** We celebrate, welcome and share stories with the many different communities that make up Edmonton. Our stages come alive with different voices and cultures. We strive to make our productions and our facilities inclusive and accessible; we believe the Citadel is a place where everyone belongs.

**INNOVATIVE** Our programming will celebrate new work, new performance styles and productions that experiment with dramatic form. We will develop large-scale new work by Edmontonian, Canadian and international playwrights. We will create collisions between different art forms, and present work that includes dance, music and digital storytelling.

**INTERNATIONAL** We will present and collaborate with exciting theatre-makers from around the world, as well as taking the fantastic work of the Citadel to audiences everywhere.



# RECOGNIZING OUR PARTNERS

## SEASON SPONSOR



## PRESENTING SPONSORS



*Network/  
Heart and Soul*



*School Matinees*



*Students Club*



*A Christmas Carol*



*Foundation*

*RBC Horizon  
Emerging Artist*

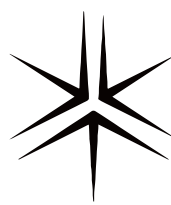


*Play Development*



*Pay What You Choose*

## PRODUCTION SPONSORS



*MILLER THOMSON  
AVOCATS | LAWYERS*

*Clue*



*EMERY  
JAMIESON  
LLP*

*Jersey Boys*

# PERFORMANCE SPONSORS



# PROGRAM SPONSORS



Community Partner



I Can Pretend!  
Program



Community Partner

# OFFICIAL SUPPLIERS



# MEDIA SPONSORS





# DID YOU KNOW...

The Citadel Theatre is a registered charity?  
We rely on the support of our incredible community to help us continue to offer relevant and entertaining performances on our stages and life-changing opportunities to artists of all ages and abilities through our educational programming. Please help us continue to enrich the cultural fabric of Edmonton by donating today at [citadeltheatre.com](http://citadeltheatre.com)!



**THE  
CITADEL  
THEATRE**



# PREMIER SUPPORTERS

**THANK YOU TO OUR PARTNERS IN THE  
CREATION OF THEATRE AT THE CITADEL:**

**The Hole Family**

**The Eldon and Anne Foote Fund**

**Maclab Development Group**

**The John and Barbara Poole Family Fund**

**The Joseph H. Shoctor Fund**

---

## GOVERNMENT AND FOUNDATION FUNDERS

**Edmonton**



Funded by the  
Government  
of Canada

Financé par le  
gouvernement  
du Canada



Canada Council  
for the Arts

Conseil des Arts  
du Canada



Foundation

---

We acknowledge the support of the Canada Council for the Arts, which last year invested \$195 million to bring the arts to Canadians throughout the country.

Nous remercions le Conseil des arts du Canada de son soutien. L'an dernier, le Conseil a investi 195 millions de dollars pour mettre de l'art dans la vie des Canadiennes et des Canadiens de tout le pays.





## **DR. JOSEPH H. SHOCTOR, 1922 – 2001**

EXECUTIVE PRODUCER AND FOUNDER  
OF THE CITADEL THEATRE

### **JOE'S VISION**

brought professional theatre to Edmonton

### **JOE'S DREAM**

built the Citadel Theatre

### **JOE'S SPIRIT**

continues to inspire the theatre we create today

### **JOE'S LEGACY**

lives on through a generous gift to the Citadel  
from his estate

---

## **HENRY HOLE, 1884 – 1954**

On the Citadel's 30th Anniversary, a gift was made by the Company of Harry Hole, James F. Hole, Ralph K. Hole and Robert W. Hole on behalf of the Hole family — in honour of their late father, Henry Hole.

The Citadel Theatre is proud to honour Henry Hole's integrity, compassion and leadership in the dedication of this complex to his memory.

# ANNUAL SUPPORT

THANK YOU! We extend our heartfelt thanks to all our donors, whose generosity plays a crucial role in ensuring our community has the opportunity to experience the joy of performing arts. All of our donors have a profound and lasting impact on the quality, accessibility, and relevance of the Citadel's productions, facility, and educational offerings.

## STEWARD

Gifts of \$10,000+

The Estate of Marguerite Bowen  
Randy & Wendy Dupree  
Brent & Deborah Hesje  
Ada Hole  
Al & Fran Olson  
Kayla Shoctor  
Marshall & Debby Shoctor  
Overhead Door Co. of Edmonton

## ARTISTIC DIRECTOR

Gifts of \$5000-\$9999

2 Anonymous  
The Polar Foundation  
Dr. Lorraine Bray & Jim Carter OC  
M & J Dal Bello  
Lesley Cormack  
Brent & Deborah Hesje  
Marc de La Bruyère & Stacy Schiff  
Grace & Arnold Rumbold

## DIRECTOR

Gifts of \$2,500 - \$4,999

Weir Family Fund  
Mitchell Family Fund  
The Honourable Darlene Acton  
Bruce & Carol Bentley  
Brian & Barbara Burrows  
James Casey & Gail Verity

Judith Cosco  
Watson Family  
Sandra Anne Haskins  
Gail & Andrew Jarema  
Wolfgang & Beth Kaminski  
Allen & Patti Kramer  
Donna Krucik  
The Poole Family  
Esther Ondrack  
Sir Francis Price & The Honourable Marguerite Trussler  
Aroon Sequeira  
Kathy & Scott Watson  
Sam Withanachchi  
Ralph Young  
Leon & Vonnie L. Zupan

## STAR

Gifts of \$1000-\$2499

2 Anonymous  
Flanagan Foundation  
McCoy Family Foundation  
Pratch Family Foundation  
Harvey & Judith Abbott  
Jennifer Addison  
Diana & Laurence Andriashek  
Roger Babichuk  
Jeff Boadway  
Frank Calder  
Arlene Gladstone & Hamish Cameron  
Marguerite & Zbigniew Chrzanowski  
Todd & Judy Gilchrist  
Gaie Goin  
J.G. Greenough

Bruce E. Hagstrom  
Christopher Head  
J.D. Hole  
Brenda & John Inglis  
Norman & Valerie Kneteman  
Liz Kohle  
Sylvia A. Kother  
Ken & Jennifer Kouri  
James & Maggie Laing  
Robert & Dawn Lemke  
Daryl Cloran & Holly Lewis  
Mary Lister  
Linda & Kim MacKenzie  
Neil & Pamela Martin  
Jack & Lorraine McBain  
Laurie & Dave McInnes  
David Mundy  
Lewis & Lindsay Nakatsui  
Pearl Neilsen  
Catrin Owen  
Leslie & Rick Penny  
Lawrence A. Pshyk  
Richard Remund  
Alan Rose  
David & Rachel Ross  
Lisa Miller & Farrel Shadlyn  
Chris & Dale Sheard  
Kimberlee Stadelmann  
Lee Ann & Lorne Tyrrell  
Shannon van Soest  
David Verbicky  
Kim & Don Wheaton  
Dr. Ghalib Ahmed & Derek Wicks  
Kim Thompson & John Wilson



## LEAD

### Gifts of \$500-\$999

5 Anonymous  
Gary Boehm Fund  
Carol Blair & Associates Inc.  
Timbers Consulting & Hazops Inc  
Dagny & Graeme Alston  
Daniel Ernest Bettcher  
Chris & Leah Burrows  
Lucille Birkett & Randy Busby  
Elizabeth Cherry  
Heather Chorley  
Ruth Collins-Nakai  
Karen Cox  
Ian & Lynne Duncan  
Douglas Bruce Duval  
Karen Dyberg  
Andy & Marianne Elder  
Liane Rae Faulder  
Cathy G. Flood  
Jean Fukushima  
Gaie Goin  
Marla Gordulic  
Sari Haas  
Mary Sturgeon & Matthew Halstead  
Dave & Janet Hancock  
Nancy Heule  
Elizabeth Hillier  
Jana Holden  
Carol R. Jackson  
Hanae Kiyooka  
Linda & Siegrfried Kowand  
Theresa Lema  
Pat Luxford  
Stephen & Catherine Madsen  
Laurie McCaffrey  
Douglas & Claire McConnell  
Averie & Carman McNary  
William Mustard  
Edna & Cal Nichols  
Jennifer J. Oakes  
Carolyn O'Hara  
Cliff & Connie Otto  
Fred & Helen Otto  
Vital & Colleen Ouellette  
Fred & Mary Paranchych  
C. Thomas & Judith Peacocke

Jean & Edward Posyniak  
Barb J. Prodor  
Lawrence & Mary Anne Pshyk  
Tina & Tony Rota  
Constance Scarlett  
Culley Schweger Bell and Steven  
Shauna J. Scott  
Marianne & Allan Scott  
Gerry & Barbara Sinn  
Merle & Neil Taylor  
Michael & Kathleen Tomin  
Mary-Ann & Andy Trachimowich  
Robert Van Soest  
Shannon van soest  
Doug & Dorothy Warren  
Robert & Ann Weir  
Willis Winter  
Sarah Wylie  
Randall & Nancy Yatscoff  
Betty Young  
Gordon & Agneta

## SUPPORTING

### Gifts of \$100-\$499

21 Anonymous  
Jean & Gerry Staring Fund  
Sylvia A. Kother  
Theresa Agnew  
Allan Alcock  
Kathryn Aleong  
Sandra M. Anderson  
Martin & Anna Andrea  
Scott Arndt  
Vance Avery  
Brenda Barber  
Lorelli Barbutza  
Maurice & Annette Bastide  
Steve Bates  
Cecilia Baxter  
Lola Baydala  
Andrew & Susan Benkovich  
Isabel Bernete  
Daniel Ernest Bettcher  
Kathey & Mark Birtles  
Stan Bissell  
Bev Blasetti  
Julia Boberg

Angie Bogner  
Judie Bond  
Ed & Marianne Bouthillier  
Kathleen Bowman  
Heather Boyd  
Teresa & Robyn Boyko  
E Ross Bradley  
Ainsley Brown  
Margery E. Brown  
Angela C. Brown  
Linda Brownlee  
Denise I. Bryden  
Fred West & Chris Brzezowski  
Janet Buckmaster  
Norman & Anne Burgess  
Greg Burghardt  
Kevin & Sarah Burghardt  
Lucille & Randy Busby  
Irene Cameron  
Janet & Kevin Campbell  
Mary K. Campenot  
James & Joan Carlson  
Raymond Caron  
Martin Carroll  
Justine Carvalho-Moreira  
Irene Ann Cassady  
Kate Chambers  
Mr. Brian Charette  
Jacqueline Charlesworth  
Sharleen M. Chevraux  
Rohit Chokhani  
Peni Christopher  
Brent Christopherson  
Wayne Church  
Gordon & Janet Clanachan  
Nancy J. Clark  
Jennifer Clover  
Ruth Collins-Nakai  
Charlotte & Gerry Cooper  
Marcie Coutts  
Kim & Rick Craig  
Patrick & Luxie Crowe  
Pemme Cunliffe  
Leeann Currie  
Chris Danchuk  
Marilyn Darwish  
Gwen C. Davies  
Karen Davison  
Dorothy Dawson  
Frank C. DeAngelis  
Christine Anne Dechoretz  
Marcella Dejong  
Brian & Anita Denniss



Sherry DeSoete	Patricia Hengel	Liviniuk
Karen & John Donahoe	Jocelyn Hey	Sandra & Jim Lockhart
Margaret Dorey	Ainsley Hillyard	Chris & Cecile Lord
Brad & Elaine Doucette	Patsy Ho	Glenn Walmsley & Lois
Jim & Pauline Drinkwater	Sandra Hobbs	Love
Margaret Dudley	Bruce & Gail Hogle	Liz Luchko
Sylvia Duffus	Victoria Holota	Christie Lutsiak
Ian & Lynne Duncan	Donna Holowaychuk	Victoria Anne Luxton
Roland Duquette	Scott Horton	Janice MacDonald
Erin & David Edwards	Lauretta Howard	M. Louise MacGregor
Joy Edwards	Kathy Howery	Don & Christina Mah
Beverley Ellingson	Dianne & Robert Hrab	Jo Anne Mahood
Carol Engelking	Theresa Hryciw	Isobel Mailloux
Alison Eshpeter	Douglas & Joan O. Hube	Linda Maki
Dean M. Evanger	Kelvin Hussey	Andrew & Anne Malcolm
Solymos Family	Rob & Judy Hutchinson	John Markey
Elizabeth Faulder	Clare Irwin	Diane Marsh
Gail Faulkner	Margaret L. Iveson	Estelle I. Marshall
Joe & Pat Fenrich	Douglas & Diane Jack	Neil & Pamela Martin
Martin & Peggi Ferguson-	Johnson	Linda May
Pell	Marilyn Jackson	Roisin A. McCabe
Lois Field	Erik & Franziska	Roxanne McLean
Lil Filewych	Jacobsen	Anne McLellan
Robert T. Fleming	Ernie Jacobson	Juliet McMaster
Cathy G. Flood	Susan Jane	Deb McRae
Sylvia H E. Flood	Louise Jensen	Linda Medland Davis
Tim Fort	Lori Stewart & Jack	Donna Meen
Jean-Pierre Fournier	Jervis	Dr. Bubbles & Evelyn
Joe & Pat Fenrich	Ronald J. Jewitt	Meer
Judith Fris	Kelvin Jones	Daniel Melenchuk
Barb Funk	Brian & Ida Kaliel	Laurie Mereu
Myrna Fyfe	Jatinder & Mala Kalra	Mark Mertens
Barbara & Ken Galm	Bob Kamp	Darel Mesher
Lorie Garritty	Dorothy Keeler	Jennifer Mikula
Gordon Giles	Paula Kelly	Marie Montgomery
Rhonda L. Gillrie	Gerry Kendal	Bonnie Moon
Marla Gordulic	Janice Kent	Gail Moores
Lila Gould	Monte Koeing	Gordon & Cathy
Bob & Alayne Graves	Raeanna Koo	Moorhouse
Michele & Lee Green	Brenda Krutzfeldt	Chantal Moreau
Royston Greenwood	Karen Kvill	R. Morgan
Paul V. Greenwood	Christine Kyriakides	Joan Morrison
Audrey Groeneveld	Adam Lachacz	Sonya & Greg Mowbrey
Ali Grotkowski	Joy & David Lardner	Leanne M. Nadwidny
Ben Ha	Iryna Laschuk	Lynne J. Neis
David & Marion	Ruth & George Lauf	Anne Nothof
Haggarty-France	Tracey Laventure	Tony Nutting
Catherine & James	Kathryn & Steven Lavery	Jennifer J. Oakes
Hammond	Don & Gwen Lawrence	Penny Omell
Cathy & David Harbinson	Gordon T. Lea	David & Paula
Julie Harvey	Marilyn Lebuke	Onderwater
Faye Hatch	Sigmund Lee	James & Beverley Orioux
Ronald & Marcie-Lynne	Valda Levin	Kathy Packford
Haukenfrers	Paul & Clarissa Lewis	Stacey & Chris Padbury
Lois & Chan Hawkins	Myron & Maureen	Marian Palahniuk

Barbara Panich  
Bhupen & Lata Parekh  
Carol Pawlenchuk  
Donna Pawliw  
Richard & Catherine  
Perry  
Carlie & Greg Persson  
Tammy Pidner  
Marija Pipunic  
Heather Pontikes  
Paul & Leslie Precht  
Susan Priestner  
Diana Purdy  
Paul Puszczak  
Marilyn & Michael  
Quaedvlieg  
Andrew & Carol  
Raczynski  
Jeff Ramage  
Dylan Reade  
Corrie Redl  
Joan Redman  
Gary Redmond  
Barbara Redmond-Ellehoj  
Wes Owen Rempel  
Eric Rice  
Sheila Ringrose  
Ron & Carol Ritch  
Mary Ritchie  
Lindsay C. Robinson  
Dean & Jan Rokosh  
Betty Ross  
Susan Green & Stuart  
Roth  
Phil Roy  
Merceline Runzer-  
Steeves  
Tetyana Ryabets-Zuk  
Mitch & Maryann  
Sabourin  
Penny Salmon  
Deborah Salo  
Hugh & Margaret  
Sanders  
Kim Sanderson  
Adrienne Sannachan  
Andrew & Janet Schalm  
Stan & Deb  
Schellenberger

Martha Schiel  
Rhonda Schnee  
Ian Schultz  
Tony Scozzafava  
Dawna Scrivens  
Nancy Scrymgeour  
Craig Neuman & Leita  
Seiver  
Rita Sequeira  
Jack Seto  
Tom & Sheila Shand  
Tami L. Shandro  
Sanjay & Suvidha  
Sharma  
Glenn & Margaret  
Sharples  
Deb Shaw  
Sol & Shirley E.  
Sigurdson  
Vivian Simmonds  
Alayne J. Sinclair  
Gerry & Barbara Sinn  
Sheila Sirdar  
Paula Siwik  
Yvonne Slemko  
Marie Slusar  
Lynn Smarsh  
Jacqueline Smith  
Shelley Smith  
Sherry Smith  
Sandra Smith  
Thomas Snyder  
Bill & Linda Softley  
Dale Somerville  
Tim Spelliscy  
Keith & Bev Spencer  
Terri & Michael  
Spotowski  
Lawrence Staples  
Elout & Adalei Starreveld  
Martha Steenstrup  
Delores Stefaniszyn  
Leland & Judy Stelck  
Bill Stoley  
Ben & Laraine Strafford  
Keith Strong  
Sydney Stuart  
Caroline Stuart  
Jenny Stuart

Craig Stumpf-Allen  
Frank & Rosanne Thede  
Allison Theman  
Tina Thomas  
Maggie R. Thompson  
Karen L C. Titanich  
Michael & Kathleen  
Tomyn  
Tim Toohey  
Mary-Ann & Andy  
Trachimowich  
Jean & Jim Triscott  
Alana Mae Tucker  
Nancy Tymchak  
Gary Unger  
Carol Vaage  
Henriette van Hees  
Eric van Walsum  
Daniel A. Vandermeulen  
David & Heather Vickar  
Marie-Louise Vieira  
Chris Vilcsak  
Lori Anne Wall  
Scott Wallace  
Nicole Watts  
Mr. Douglas Webster  
Michele Wedemire  
William & Debra Wells  
Daniel Westfall  
Maya Wheelock  
Audrey J. Whitson  
Kathy & Lorris Williams  
Eva Willox  
Willis Winter  
Daniel & Tonya Wolfe  
William & Dorothy  
Wolodko  
Richard & Vivian Wong  
Debra Wooding  
Peter & Joan Wright  
Keith Wylie  
Randall & Nancy Yatscoff  
Linda M. Youell  
Mary Anne Yurkiw  
Ms. Mara O. Zanier  
Diane Zinyk  
Lorna Zucchet

To learn more about donating to the Citadel Theatre, please visit [www.citadeltheatre.com](http://www.citadeltheatre.com) or contact Rebekah Andrews at [randrews@citadeltheatre.com](mailto:randrews@citadeltheatre.com). Charitable BN 11922 7387 RR0001. Every effort has been made to ensure the accuracy of our donor information. Listing includes donations of \$100 or more. If we have made an error or omission, please contact us at [randrews@citadeltheatre.com](mailto:randrews@citadeltheatre.com). We apologize for any inconvenience.



# CITADEL STAFF

## BOARD OF GOVERNORS

Solomon Rolinger  
K.C. Chair

Marshall Shoctor  
K.C. Past Chair

Bruce Bentley  
Treasurer

Tom Redl  
Secretary

Wendy Dupree  
Ex Officio

Frederick K.  
Campbell

Jacqueline  
Charlesworth

Ada Hole

Arliss Miller

Aroon Sequeira

Chris Sheard

Kayla Shoctor

Dr. Robert Westbury

Sheila Witwicky

Ralph Young

## BOARD OF DIRECTORS

Jennifer Addison  
Chair

Jeff Boadway  
Past Chair

Roger Babichuk  
Treasurer

Hunter Cardinal

Wanda Costen

Derrique DeGagné

Sandra Haskins

Kaitlyn Hunder

Marcie Kiziak

Joy Lardner  
Shannon Marchand  
Lindsay Rainbow  
Constance Scarlett

## HONOURARY DIRECTORS

Jack N. Agrios

Jane Batty

Ken Bautista

Joanne Berger

Christine Bishop

Dan Block

Guy Bridgeman

Frank Calder

Gary G. Campbell

Betty Carlson

Donald A. Carlson

Marilyn Cohen

Reg Copithorne

Len Dolgoy

Allison Edwards

Dennis Erker

Grant Fairley

John C. Forster

Frank Gibson

James Gillespie

Jane Halford

Jean Hamilton

Brian Hetherington

Becky Hole

Ted Hole

Mike House

Gary Killips

Richard Kirby

Stuart Lee

Beverlee Loat  
Al Maurer  
Ashif Mawji  
Maureen McCaw  
Lisa Miller  
Susan Minsos  
Terry Nistor  
Bob Normand  
Catrin Owen  
Ted Power  
Jerry Preston  
Henry (Hank) Reid  
Rob Reynolds  
Charlotte Robb  
Margot Ross-Graham  
Barbara Shumsky  
Peter Silverstone  
Gaurav Singhmar  
Larry Staples  
Esther Starkman  
Marianne Takach  
Merle Taylor  
Mr. Justice Dennis R.  
Thomas  
Brian Tod  
John Tweddle  
Brian Vaasjo  
A.H. Wachowich  
Bob Walker  
Dr. Marvin Weisler  
Bart West  
Eve Willox  
David Wilson  
Doris Wilson  
John Yerxa

**HONOURARY  
GOVERNORS**

David Bentley  
Marc de La Bruyère  
Anne Foote  
J.G. Greenough  
Sandy Mactaggart  
Jack McBain

**LEADERSHIP**

Daryl Cloran  
Artistic Director  
Sarah Pocklington  
Executive Director

**ARTISTIC**

Jessie van Rijn  
Producer

Mieko Ouchi  
Associate  
Artistic Director

Luc Tellier  
Director, Education  
& Outreach

Peni Christopher  
Asst. to the A.D.  
Company Manager

Wayne Paquette  
Associate Producer

Diana Stevenson  
Manager, Foote  
Theatre School

Kristi Hansen  
Associate Artist

Ellen Chorley  
Students Club Facilitator

**ADMINISTRATION**

Kimberlee Stadelmann  
Associate Executive  
Director

Sophia Fei  
Director of Finance

Ting Ting Li  
Accounting Clerk

Bettyanna Huggins  
Payroll

Shirley Tran  
Payroll

Heather Watson  
Human Resources

Rebekah Andrews  
Executive Assistant

**FUND  
DEVELOPMENT**

Sydney Stuart  
Director, Fund  
Development  
Rachel Bokenfohr  
Corporate Giving Manager

Rebekah Andrews  
Coordinator, Fund  
Development

**MARKETING  
AND SALES**

Brianna Gallagher  
Marketing and  
Sales Director

Kristen Hiemstra  
Creative Director

Susanne Chmait  
Social Media and  
Community Coordinator

Rebecca Harding  
Digital Web Designer

Arthur Mah  
Videographer

**HOSPITALITY**

Hayden Weir  
Hospitality Manager

Gabby Bernard

Colton Cameron

Alex Cherovsky

Matt Cline

Madeleine Doucet

Shyanne Duquette

Saige Evers

Cameron Freitas

John Gunter

Sam Kennedy

Graham Mothersill

Priya Narine

Anna Robinson

Kera Stevenson

**RENTALS**

Kieran Quirke  
Rentals Manager

**GUEST SERVICES**

Eden Edwards  
Patron Relations  
Manager

Ben Osgood  
Asst. Patron  
Relations Manager

Melissa Budinski  
Front of House Manager

Josephine Hendrick  
Education & Group Sales  
Administrator

**GUEST SERVICES  
SUPERVISORS**

Kevin Cambridge

Victoria DeJong

McKinna Elliott

Rune Jander

Emma Jones

Davis Shewchuk

Elaine Vo

Kate Walker

Leah Wilson

**GUEST SERVICES  
REPRESENTATIVES**

Andraya Diogo

Grace Fitzgerald

Sean Herbert



Brittany Hinse  
Abby Koshka  
Melanie Letourneau  
Samantha Mann  
Rose Miller  
Alex Reyes  
Logan Stefura  
Craig Stumpf-Allen  
Maia Trotter  
Jessica Ussher  
Stacy Vanden Dool  
Alex Voutchkov  
Vanessa Wilson  
Katie Yoner

## PRODUCTION

Cheryl L. Hoover  
Director of Production  
Patrick Fraser  
Technical Director  
Gal Minnes  
Assistant Production  
Manager  
Jacinda Grummett  
Asst. Technical Director  
Matthew Koyata  
Asst. Technical Director  
Jenna Kerekes  
Administrative Assistant  
Michelle Chan  
Resident Stage Manager  
Nick Rose  
Head of Audio  
Mitch Labrosse  
Assistant Head of Audio  
Nicole O'Brien  
Audio  
Peter Locock  
Head of Scenic Carpentry  
Chris Hayes  
Asst. Head of Scenic  
Carpentry  
Greg Cardinal  
Scenic Carpenter  
Jeff Howe

Scenic Carpenter  
Serge Menard  
Scenic Carpenter  
Tegan Herron  
Head of Electrics  
Ben Eastep  
Asst. Head of Electrics  
Erin Birkenbergs  
Electrics  
Doug Field  
Electrics  
Patrick Michaud  
Electrics  
Andrée Simard  
Head of Scenic Paint  
Zena Jensen  
Asst. Head of Scenic Paint  
Megan Paliwoda  
Scenic Painter  
Sarah Karpyschin  
Head of Props  
Angie Sotiropoulis  
Asst. Head of Props  
Evangeline Cardinal  
Props  
Charlotte Hunt  
Props  
Connor MacDonald  
Props  
Marc Anderson  
Head of Stage Carpentry  
Kris Aasen  
Asst. Head of  
Stage Carpentry  
Leanne Townsend  
Stage Carpenter  
Patsy Thomas  
Head of Wardrobe  
Marissa Kochanski  
Acting Head of Wardrobe  
Judith Darough  
Cutter  
Claude Tanguay  
Cutter  
Barb Becker  
Fabricator  
Laura Lee Osborne

Milliner  
Emma Allarie  
Stitcher  
Tammy Barry  
Stitcher  
Julie Davie  
Stitcher  
Anna Davidson  
Stitcher  
Brenda Inglis  
Stitcher  
Joanna Johnson  
Stitcher  
Jaylene Lubrick  
Stitcher  
Nancy Malott  
Stitcher  
Mandy Mattson  
Stitcher  
Kathryn Neuman  
Stitcher  
Olivia Derksen  
Head of Wardrobe Running  
Janessa Barron  
Dresser  
Frances Girard  
Dresser  
Mandy Mattson  
Wardrobe Maintenance  
Katie Patton  
Head of Wigs  
Christa Hoefling  
Asst. Head of Wigs  
Gaylynnne Fell  
Wigs  
Victoria Stevens  
Wig Maintenance

## FOOTE THEATRE SCHOOL INSTRUCTORS

Joleen Ballendine  
Mhairi Berg  
Ellen Chorley  
Sydney Cogan-Grahn  
Crystal Hanson

Sally Hunt  
Sydney Keenan  
Abby Krushel  
Moses Kouyaté  
Josh Languedoc  
Rochelle Laplante  
Annette Loiselle  
Barbara Mah  
Damon Pitcher  
Clayton Plamondon  
Amanda Samuelson  
Eileen Sproule  
Julie Sucie  
Nathaniel Tesfaye  
Emily Thorne  
Kim Turner

**YOUNG COMPANY  
INSTRUCTORS**

Mel Bahniuk  
Elena Belyea  
Deviani Bonilla  
Tracy Carroll  
Kim Denis  
David Horak  
Binaifer Kapadia  
Kate Ryan

**FACILITY**

Bill Daniels  
Facilities Manager  
Yang Yang

**JANITORIAL**

Bee Clean Services

**SECURITY**

Alberta Crowd  
Management

**VOLUNTEERS**

Bette Adams-Hill  
Zoe Afaganis  
Hermione Ainsworth  
Hasra Ali  
Johanna Andreoff  
Judith Babcock  
Luis Ballester  
Shelley Benson  
Erika Beyer  
Bernie Bolton  
Florence Borch  
Ken Borch  
Alan Burkin  
Margot Byer  
Patrick Caron  
Dee Cartledge  
Rob Cauti  
Brittany Edwards  
Lil Filewych  
Irene Gagne  
Louise Gagne  
Dan Germain  
Bonita Gillespie  
Betty Grudnizki  
Julie Harvey  
Carol Haley  
Jeff Haswell  
Rosemarie Heaney  
Brad Heller  
Diane Helmers  
Kristen Hennessey  
Maria Hollinshead  
Doug Hunter  
Joan Johnston  
Joanne Kallal  
Sandra Keating  
Hanae Kiyooka  
Robin Knight  
Eva Kopecka  
Arndt Kuethe  
Janice Kuethe  
Wendy Kurtz

Susan Lauridson  
Sylvia Lee  
Karen Lewis-Caron  
Elizabeth Luchko  
Rita MacDonald  
Ross Machetchuk  
Bob Matfin  
Linda McMurdo  
Donna McKay  
Sam Michealchuk  
Karen Miller  
Janice Minamide  
Tiramisu Moffitt  
Joan Murchie  
Andrea Newman  
Linda Orlecki  
Susan Patenaude  
Denise Pridmore  
Doug Racine  
Leila Ragoonanan  
Joan Redman  
Barbara Reinhardt  
Lori Ristoff  
Cheryl Ritchie  
Sukhjit Saimbhee  
Susan Schroter  
Angela Seery  
Theresa Shea  
James Smibert  
Linda Smibert  
Victoria Spang  
Deb Stack  
Rhonda Taft  
Diane Trithardt  
Christine Tupper  
Lacey Untereiner  
Brenda Voyce  
Talia West  
Liz White-MacDonald  
Kay Willekes  
Bonnie Connelly Wilson  
Vanessa Wilson  
Dave Wolkowski