

Bus Drop Off and Parking Information for Schools and Groups

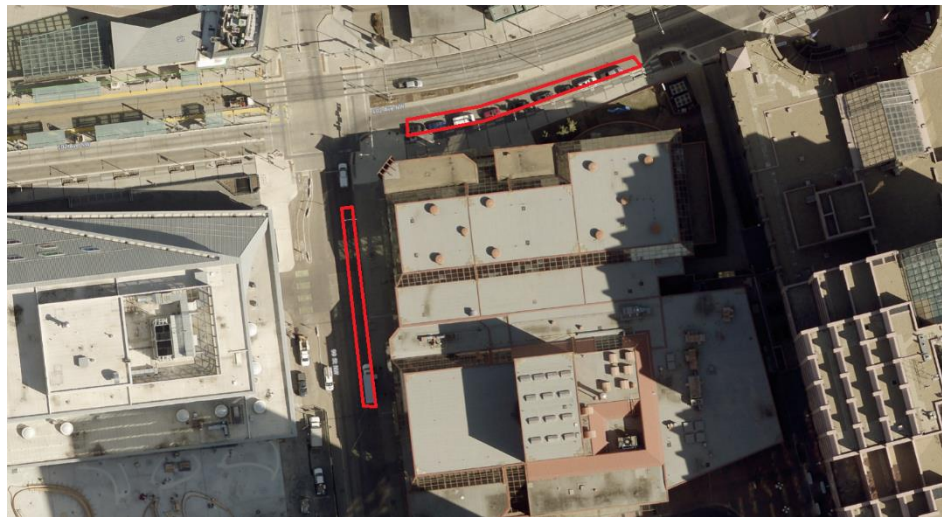
With the new LRT Valley Line, 102 Avenue has been reduced to a single one-way lane going east. We recommend dropping off/picking up students at the Citadel and parking the bus at a nearby bus parking spot. Please review this information with your bus drivers.

Please visit the City of Edmonton website for up-to-date information regarding road closures and traffic disruptions to plan your route.

- <https://www.edmonton.ca/transportation/traffic-reports.aspx>
- <https://www.edmonton.ca/transportation/current-traffic-disruptions.aspx>

Bus Drop Off/Pick Up Locations

1. 99 Street between Shoctor Alley and 102 Avenue. Access to the Citadel's West Entrance, with an Accessible entrance. Please see image below.
2. 102 Avenue between 99 Street and 97 Street. Access to the Citadel's North Entrance. An accessible door for wheelchairs is available on the west side of the Citadel on 99 Street. Please see image below.
3. 97 Street between 102A Avenue and Jasper Avenue. This is on the East Side of the Canada Place building. Students can walk outside to the Citadel entrance or enter the Canada Place entrance on 97 Street and walk through the indoor pedway to the Citadel Theatre.



Please Note: Your bus will NOT be able to park in these locations and wait for your group, as they are loading zones only. We kindly ask that your bus comes to pick you up after your group arrives at one of these locations. As well, all bus drivers must follow the Citadel staff and security's directions to alleviate traffic congestion.

Bus Parking Information

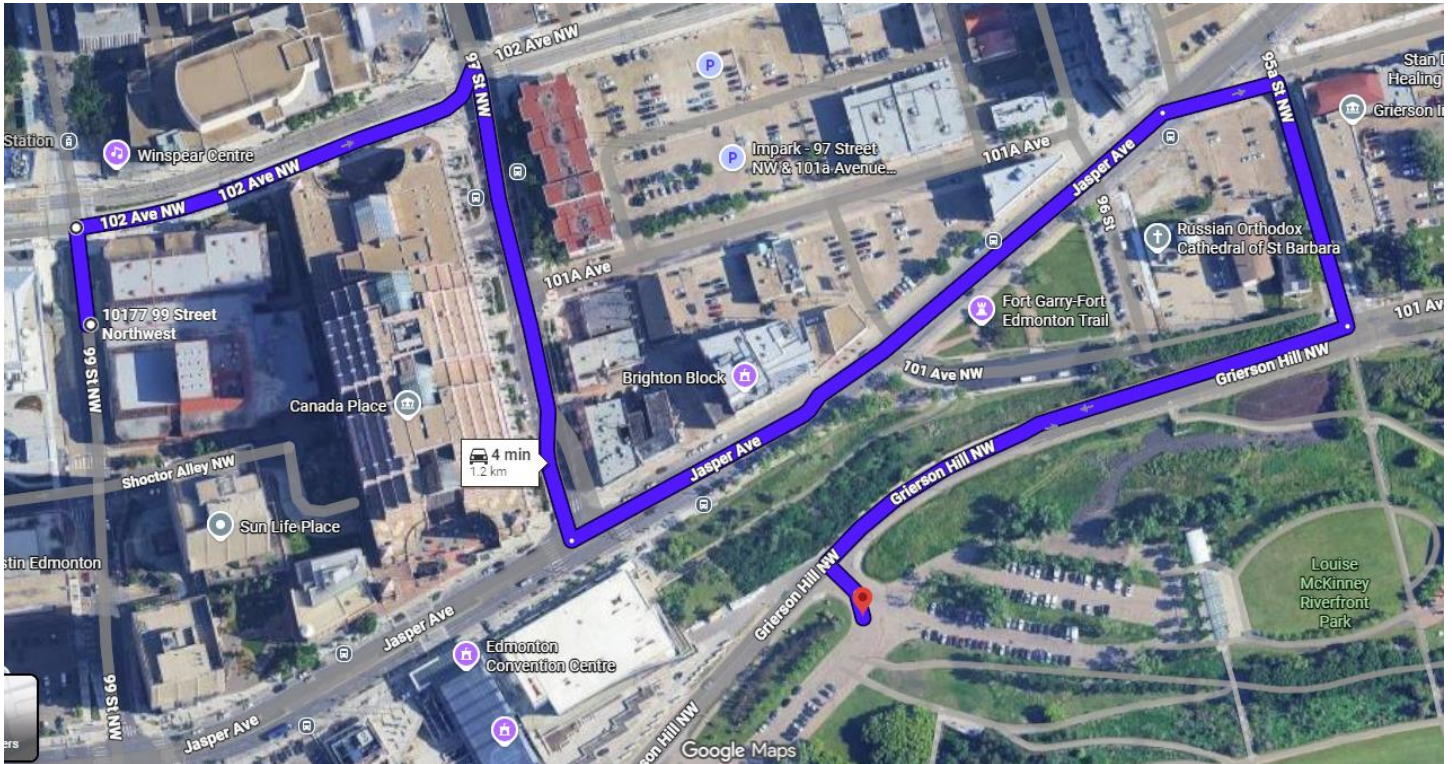
The following downtown tour bus parking stalls are first come first served and can be found at these locations, all marked with "Tour Bus Parking Only"

1. MacDonald Drive (South side) West of 101 Street
2. 102 Street (East side) North of 100 Avenue
3. 99 Street (East side) North of 101A Avenue (Please note: This becomes a loading zone during School Matinees, and buses cannot stay parked there.)

Additional Parking at Louise McKinney Riverfront Park

Additional parking can be found at the public parking lot at Louise McKinney Riverfront Park, located at **9711 Grierson Hill NW**. Here are the directions from the Citadel, after dropping of students on 99th Street.

- 1) Turn Right on 102 Ave NW
- 2) Turn Right 97 St NW
- 3) Turn Left on Jasper Ave
- 4) Turn Right on 95a St. NW
- 5) Turn Right on Grierson Hill NW
- 6) Turn Left into the Parking Lot



Buses can also use [EPark](#) and park on regular street parking but will have to pay for each parking spot filled.

It can be arranged through The City of Edmonton to have EPark Zones reserved but this needs to be done a few days in advance and there is a fee for this service. This can be done by calling the City of Edmonton @ 311.

All tour bus parking inquiries/tour bus parking requests are to be emailed to parkingassets@edmonton.ca