

THE IMPORTANCE OF BEING EARNEST



BY OSCAR WILDE

**THE
CITADEL
THEATRE**

SEASON
SPONSOR

Capital Power 

THE CITADEL THEATRE

DARYL CLORAN
ARTISTIC DIRECTOR

ALAN NURSALL
INTERIM EXECUTIVE DIRECTOR



  @CITADELTHEATRE  @CITADELTHEATREYEG

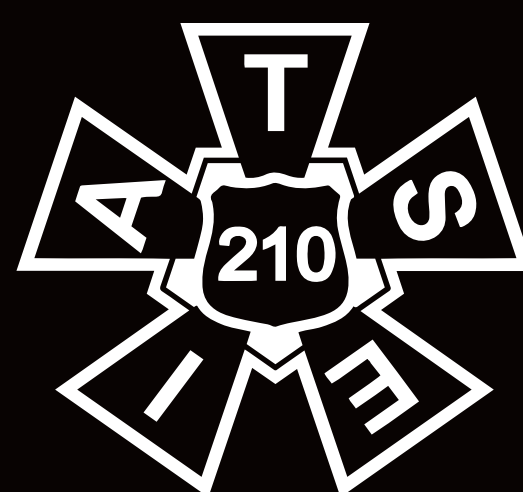
The video or audio recording of this performance by any means is strictly prohibited.

WE WISH TO ACKNOWLEDGE that the land on which we gather is Treaty No. 6 territory and a traditional meeting ground and home of the First Nations, including both the treaty signatories – Cree, Saulteaux, Nakota Sioux, Stony and Cree-Iroquois – as well as other Indigenous peoples, such as the Blackfoot and Métis, who occupy this land. We extend our appreciation for the opportunity to live, create and perform on this territory.

Nikistêyhtamâkânân oma askîwihtâwin ita
kâ mâwasakôyâhk Nikotwâsik Kâ akihtêk
omâmawôpayônôwâw Nistam Îyinôwak,
nânapo ôkih tipahamawâkan tahkikwanênkêwak-
Nêhîyawak, Nahkawînôwak, Opwâsîmowak, Asinî
Pwâtak êkwah Nêhîyaw Paskosikanak-êkwah
kotakak Îyinôwak, tâpiskôc Kaskitêwayasitak êkwah
Âpihtwâyak, kâkîh kikîwîhkêcik otah. Nitâniskê
nanâskôtênân tawâw ôtah êh ayâyâhk tita wîci
pimâtisîhtamâhk, tita osîhcikêyâhk êkwah tita
nôkohtihwêyâhk otah askîwihtâwinihk.

The Citadel engages, under the terms of the Canadian Theatre Agreement, professional artists who are members of the Canadian Actors' Equity Association. Production personnel for the Citadel Theatre are members of the International Alliance of Theatrical Stage Employees (I.A.T.S.E.)

Indicated designers on this production are represented by the Associated Designers of Canada, IATSE Local ADC659.



THE IMPORTANCE OF BEING EARNEST

BY OSCAR WILDE

CAST

Alexander Ariate

Julien Arnold

Helen Belay

Nadien Chu

Jeff Lillico

Doug Mertz

Amelia Sargisson

Davina Stewart

Algernon Moncrieff

Rev. Canon Chasuble

Cecily Cardew

Lady Bracknell

John (Jack) Worthing

Lane, Merriman

Gwendolen Fairfax

Miss Prism

CREATIVE TEAM

Jackie Maxwell

Michael Gianfrancesco

Patrick Beagan

Deanna H. Choi

Brett Dahl

Tori Morrison

Doug Mertz

Madison Henry

Lore Green

Tim Yakimec

Stacy Vanden Dool

Director

Set & Costume Designer

Lighting Designer

Sound Designer
& Composer

Assistant Director

Assistant Sound Designer

Dialect Coach

Stage Manager

Assistant Stage Manager

Assistant Stage Manager

Apprentice Stage Manager

VENUE Maclab Theatre

AGE RECOMMENDATION 12+

RUN TIME 2 hours and 30 minutes (Act 1: 70 minutes, Intermission: 20 minutes, Act 2: 60 minutes). All timings provided are approximate.

SYNOPSIS The classic comedy by Oscar Wilde comes alive on the Citadel stage. Two society bachelors, Jack and Algernon, both secretly pretend to be a man called Ernest. After meeting two women who know them only as their alter egos, a weekend in the country sparks mayhem and hilarity in this farce about mistaken identities as they attempt to conceal the truth and keep up the charade.





WELCOME TO *THE IMPORTANCE OF BEING EARNEST*

We are thrilled to present one of the funniest plays ever written. Subtitled “A trivial comedy for serious people”, this farcical comedy is over 100 years old and still extremely sharp, insightful and hilarious.

We’re proud to welcome Jackie Maxwell back to the Citadel to direct this production. Jackie was the Artistic Director of the Shaw Festival from 2002-2016 and most recently directed our incredible production of *The Humans*. In collaboration with set & costume designer, Michael Gianfrancesco, Jackie has reimagined this production in a 1950s setting. The context is still a high-fashion, high-class world of society and manners, but with a refreshing new lens. It’s a fantastic production, beautifully designed, and packed full of wit, deceit and a whole lot of fun.

We’d like to take this moment to thank all of our fabulous donors and sponsors for your support of the Citadel. You mean the world to us! As a

not-for-profit theatre, your support is vitally important to us and is instrumental in helping us sustain both the theatre and our programming. YOU are appreciated – thank you!

A special thank you and big shout out to Capital Power, our 2023/24 Season Sponsor!

Thanks so much for joining us! Our exciting 2023/24 Season is packed full of incredible musicals (*The Sound of Music* and *Little Shop of Horrors*), great comedies (*Made in Italy*) and fantastic adventures (*The Three Musketeers*)! We hope you'll join us for the whole season!

Enjoy the show!



A handwritten signature in black ink, which appears to be 'Daryl Cloran'. The signature is fluid and cursive.

Daryl Cloran

ARTISTIC DIRECTOR

dcloran@citadeltheatre.com



HEARING LOOP

The Shocter Theatre is now equipped with a cutting-edge Hearing Loop system! This is a momentous milestone in our ongoing work towards

universal accessibility. This project was made possible with a significant contribution from the Shocter Family, community donations, and the support of Hearing Loops Canada. Thank you to our generous partners who help make the Citadel a place where everyone can belong!

Sparking creative minds and powering a bright future

Proud to be the Season Sponsor of the Citadel Theatre for over 10 years.

Capital Power 
Power



capitalpower.com



DIRECTOR'S NOTES

The Importance of Being Earnest, Oscar Wilde's self described "Trivial Comedy for Serious People", hit the London stage in 1895 and has been a beloved staple of theatre repertoire all over the world ever since.

To celebrate and explore this extraordinary staying power, designer Michael Gianfrancesco and I decided to move our production from its original period to the mid 1950s - into the High Couture world of London's "Bright Young Things" whose outre' behaviour, love of high fashion and clashes between town and country played out in a social structure virtually unchanged since Wilde's time - an era perfectly suited to present this brilliant comedy of manners anew.

Here our hope is to be able to revel in the farcical nature of the story while building a newly recognizable base of reality, to reveal the true nature of the feelings under the madness and mayhem, presenting to you the full breadth of the world of this wonderful play where the "trivial" and the "serious" meet to create theatrical magic!

Jackie Maxwell



ALEXANDER ARIATE

ALGERNON
MONCRIEFF

Alex is an Alberta-based artist and is so excited to be working on one of his favourite plays, with such an amazing and talented group of artists and creators! Previous Citadel credits include: *CLUE* and *Peter Pan Goes Wrong* (Citadel Theatre/The Arts Club). Other selected credits include: *The Merchant of Venice*, *The Tempest*, *Othello*, *Twelfth Night*, and *Winter's Tale* (The Shakespeare Company); *Might As Well Be Dead*, *Murder On The Orient Express* (Vertigo Theatre); *Listen Listen* (Teatro La Quindicina). Film & Television: *Fortunate Son* (CBC). In 2024 you can catch Alex down in Calgary starring in Vertigo Theatre's premiere of *Heist*. Alex dedicates each performance to his Mom and Dad.



**JULIEN
ARNOLD**
REV. CANON
CHASUBLE

Julien Arnold is an Edmonton-based actor and director. Previous Citadel Theatre credits include: *Clue*, *A Christmas Carol*, *Ring of Fire*, *Once*, *Sense and Sensibility*, *Spamalot*, *Beauty and the Beast*, *The Wizard of Oz*, *Servant of Two Masters*, and *A Midsummer Night's Dream*. Other Edmonton credits include: *Two* (Atlas Theatre); *The Finest of Strangers* (Teatro La Quindicina); *The Taming of the Shrew* (Freewill Shakespeare Festival); *The Wrong People Have Money* (Shadow Theatre); *Spelling Bee* (Mayfield Dinner Theatre); *A Skull in Connemara* (Theatre Network); and *Suburban Motel* (Punctuate! Theatre). Much love to S & E.



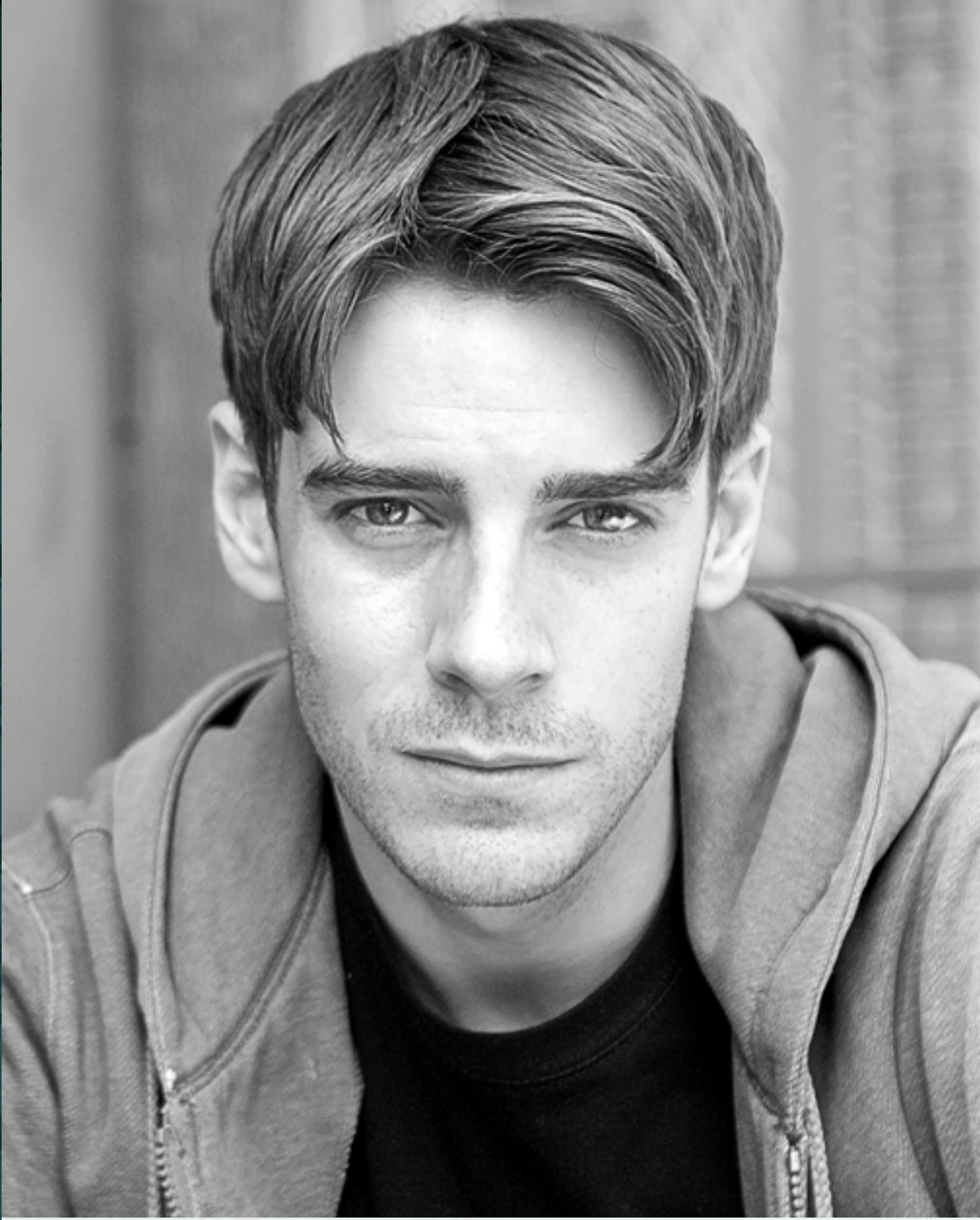
**HELEN
BELAY**
CECILY
CARDEW

Helen Belay (she/her) was born in Bedford, England and raised in Edmonton, AB. Graduate of the UofA's BFA Acting. Select credits include: *Jane Eyre*, *The Fiancée*, *Heaven* (Citadel Theatre); *The 39 Steps* (County Stage Company); *Heaven* (National Arts Centre); *The Wonderful* (Caravan Farm Theatre); *King Lear*, *Queen Goneril* (Soulpepper Theatre Company); *Here There Be Night* (WWPT); *The Blue Hour* (SkirtsAFire Festival); *...Titus Bouffonious* (Theatre Network); *Cinderella* (Globe Theatre); *Vidalia* (Teatro Live!). Thanks and love to the team, my loved ones and anyone and everyone that's ever plucked up the courage to tell a story.



**NADIEN
CHU**
LADY
BRACKNELL

Nadien Chu is a theatre artist who resides on Treaty 6 Territory. She is thrilled to be involved in this fantastic piece with this amazing team. Special thanks to KS and Jempa. Select theatre credits include: *Pretty Goblins*/Sterling Award (Workshop West); *The Thin Man* (Vertigo Theatre); *All the Little Animals I have Eaten* (One Yellow Rabbit); *Vanya, Sonia, Masha and Spike* (Alberta Theatre Projects); *Macbeth, Titus Andronicus*/Sterling Award (Freewill Shakespeare Festival); *Pride and Prejudice, Network, Jane Eyre, The Garneau Block, The Tempest, The Penelopiad, August Osage County* (Citadel Theatre); *Pig Girl, Palace of the End* (Theatre Network).



**JEFF
LILICO**
JOHN (JACK)
WORTHING

Born and raised in Alberta (though likely too far to the south to be considered of good society), Jeff is elated to be making his Citadel debut. He's performed across North America with such companies as Soupepper (23 productions), Signature Theatre Center (NYC), Chicago Shakespeare Theater, The Shaw Festival (5 seasons), The Stratford Festival, Canadian Stage, Crow's Theatre, Tarragon Theatre, Factory Theatre, Theatre Passe Muraille, Studio180, The Musical Stage Company, Theatre Calgary, & Alberta Theatre Projects. In Toronto, Jeff has won one Dora Award & been nominated for five others.



DOUG MERTZ

LANE,
MERRIMAN,
DIALECT COACH

Doug Mertz is thrilled to return to the Citadel where he was Director of Education and Outreach for over eleven years. He is currently an Assistant Professor in Music Theatre Performance at MacEwan University. Previous acting credits include: *Clue, Peter and the Starcatcher, Clybourne Park, August: Osage County* (Citadel); *Lenin's Embalmers, Or the Whale, Doubt* (Studio Theatre); *Civil Blood, Much Ado About Nothing* (Thou Art Here); *Witch Hunt at the Strand* (Workshop West); *The Long Weekend, Driving Miss Daisy* (Mayfield); *10 Funerals* (Shadow Theatre).



**AMELIA
SARGISSON**
GWENDOLEN
FAIRFAX

Amelia is a Montreal-born actor, playwright, mentor and co-founder of Ground Floor, and very excited to be at The Citadel for the first time! Previous credits include: *Paradise Lost*, *The Comedy of Errors*, *The Front Page*, *Othello*, *Hamlet 911* (Stratford); *Red Velvet* (Dora Nomination), *Seeds*, *The Watershed* (Crow's); *All I Want For Christmas*, *The 39 Steps* (META Nomination), *The Madonna Painter* (Centaur); *La Bête*, *Amadeus* (Talk Is Free); *Lear*, *Twelfth Night* (Canadian Stage); *If We Were Birds* (META Nomination), *down from heaven* (Cartes Premières Award) (Imago). Heartfelt thanks to J2, Andy, Dylan, & Troy!



DAVINA STEWART

MISS PRISM

Davina is an award-winning actress, improviser, director and graduate of the U of A BFA Acting program. Previous Credits Include: *Broadway Heist - Collider Festival, An Ideal Husband, Hello Dolly!, Suddenly Last Summer* (Citadel Theatre); *Cottagers and Indians, Vanya, Sonia, Masha and Spike* (Shadow Theatre); *Squeamish, Something Unspoken* (Northern Light Theatre); *Pia & Maria* (Concrete Theatre); *Cocktails At Pam's, Pith, & Evelyn Strange* (Teatro Live!); *Marion Bridge, A Beautiful View* (Theatre Network); *Woman Caught Unaware* (Uno Festival); *Sexy Laundry* (Mayfield Dinner Theatre) *Unsung* (Workshop West Playwrights' Theatre).



OSCAR WILDE

PLAYWRIGHT

Born in Dublin in 1854, Oscar Fingal O'Flahertie Willis Wilde proved to be a brilliant scholar at Oxford, winning the Newdigate Prize for his poem, *Ravenna*. He published two collections of children's stories and his first and only novel, *The Picture of Dorian Gray*. Wilde became one of the most popular playwrights in London in the early 1890's. *Lady Windermere's Fan* opened in 1892, and he went on to write *A Woman of No Importance* (1893), *An Ideal Husband* (1895), and *The Importance of Being Earnest*, which opened on February 14, 1895, in St. James Theatre in London. That same year, Wilde's relationship with Lord Alfred Douglas ("Boysie") became a source of controversy. A quarrel with the Marquis of Queensberry, Boysie's father, who strongly disapproved of their relationship, led to Wilde's trial and imprisonment for "gross indecency." Upon his release from jail two years later, Wilde moved to France and wrote *The Ballad of Reading Gaol*, a response to the agony he experienced in prison. He died in exile in 1900.



**JACKIE
MAXWELL**
DIRECTOR

Jackie Maxwell is one of Canada's most celebrated artists—well-known as a director, Artistic Director, dramaturge and teacher. Jackie served as Artistic Director of the Shaw Festival from 2002-2016 and as Artistic Director of Factory Theatre from 1987-95. She has directed for theatres across the country including The Stratford Festival, Tarragon Theatre, The Citadel, Soupepper Theatre Company, Mirvish Productions, Theatre Calgary, Canadian Stage and Arena Stage DC and has taught at the National Theatre School, The University of Toronto and more. Jackie was recently honoured with the Order of Canada and has also received two Dora Mavor Moore awards, two Honorary Doctorate Degrees, The Order of Ontario, and the Herbert Whittaker Award for Distinguished Contribution to Canadian Theatre.



**MICHAEL
GIANFRANCESCO**
SET & COSTUME
DESIGNER

Michael's designs for theatre, musical theatre, opera and dance have been seen across Canada, in Europe and the US. Previous Credits Include: 19 seasons at the Stratford Festival, 10 seasons at the Shaw Festival, *Jasper* (Signature Theatre NYC); *Frame By Frame* (costumes-National Ballet of Canada / Ex Machina); *Ricciardo e Zoraide* (costumes-Rossini Festival-Italy); and productions for Canadian Opera Company, Les Grands Ballets Canadiens, Opera Atelier, Canadian Stage Company, Royal Manitoba Theatre Centre, Centaur Theatre, The Grand Theatre, Tarragon Theatre, Mirvish Productions, The Segal Centre, and Théâtre du Nouveau Monde. michaelgianfrancesco.com



**PATRICK
BEAGAN**
LIGHTING
DESIGNER

Patrick Beagan (he/him) is a proud halfbreed of Nlaka'pamux and Irish Canadian descent. He is General Manager of Concrete Theatre and a co-contributor to the 35//50 Initiative, whose community call to action is due for evaluation at the end of this season. Recent works include lighting *Clue*, *The Fiancée*, *Mary's Wedding: a Métis Love Story*, *A Brimful of Asha* (Citadel Theatre); *Hansel & Gretel*, *Sleeping Beauty*, *Pinocchio* (Alberta Musical Theatre Co); *Honour Beat* (Theatre Calgary). He looks forward to revisiting *Songs My Mother Never Sung Me* with Concrete this season.



DEANNA H. CHOI

SOUND DESIGNER
& COMPOSER

Deanna H. Choi (she/her) is a theatrical sound designer and composer based in Tkaronto/ Treaty 13 Territory. She has designed soundscapes and sound systems for over 80 theatrical productions from coast to coast. Her Dora Award-winning cabaret show, *Love You Wrong Time*, will tour in the spring of 2024. Recent credits include *A Wrinkle in Time* (Stratford Festival), *The Darkest Dark* (YPT), *Things I Know to Be True* (Company Theatre/ Mirvish). For Film & TV: *Relax, I'm From the Future* (Universal); *The Nature of Things* (CBC). www.splitbrainsound.com



**BRETT
DAHL**
ASSISTANT
DIRECTOR

Brett is a queer writer, performer, drag artist and director and they are thrilled to be working with Jackie Maxwell and such an incredible team. Selected Directing credits: *Strange/Familiar* and *Pretty Ugly* (Theatre Outré); *Hecuba*, *This Property is Condemned* (UofA). Assistant Director credits: *Rochdale* (Studio Theatre); *Cymbeline* (UofA); *Men Express Their Feelings*, *rihannaboi95* (Downstage); and *King Lear* (The Shakespeare Company). Brett is about to graduate from the U of A MFA-Directing program and is the incoming Artistic Director of Theatre Outré. Brett is a recipient of the Lieutenant Governor of Alberta Emerging Artist Award.



**TORI
MORRISON**
ASSISTANT
SOUND DESIGNER

Tori Morrison is an award-winning theatre maker, composer, video designer, production manager, and producer. She is 1/2 of the producing team for Tiny Bear Jaws and she makes work with writer David Gagnon Walker as Strange Victory Performance. She is an alum of the Slight Family Music Lab at the Canadian Film Centre. Selected previous credits include: *No Save Points* (Outside the March), *Gender? I Hardly Know Them*, *Smoke*, *I Don't Even Miss You* (Tiny Bear Jaws); *This Is the Story of the Child Ruled by Fear* (Strange Victory Performance/SummerWorks/High Performance Rodeo/In the Soil/ Theatre Projects Manitoba/Pi Theatre/Found Festival).



MADISON HENRY

STAGE
MANAGER

Maddy (she/her) is excited to be kicking off the season with this incredible team. Much gratitude to Daryl, Cheryl, and Jackie for having her, and endless thanks to Lore, Tim, and Stacy for their work (and fun!). Select credits include: *Deafy*, *Jane Eyre* (Citadel Theatre); *Network* (Citadel Theatre/Royal MTC); *Gaslight* (Chemainus); *Hey Viola!* (Charlottetown Festival); *The Wizard of Oz*, *Chelsea Hotel*, *The Sound of Music*, *A Christmas Carol* (Western Canada Theatre); *The New Canadian Curling Club*, *The Buddy Holly Story* (Thousand Islands Playhouse); *Silent Light* (Banff Centre).



**LORE
GREEN**
ASSISTANT
STAGE MANAGER

Lore is thrilled to be back at the Citadel doing what she loves! Selected credits include: *A Christmas Carol, West Side Story, Curious Incident of the Dog in the Night-Time, Sense & Sensibility, HADESTOWN, Silver Arrow, Peter Pan Goes Wrong, Clue* and *Jersey Boys* (Citadel Theatre); *Timothy Findley's The Wars, Mamma Mia!* and *Titanic* (Grand Theatre); *Barvinok, Michael Mysterious* and *Alina* (Pyretic Productions); and *First Métis Man of Odesa* (Punctuate! Theatre). Lore is the resident stage manager for Pyretic Productions and holds a BFA in stage management from the University of Alberta. Slava Ukraini!



**TIM
YAKIMEC**
ASSISTANT
STAGE MANAGER

Stage Manager previous credits: *The Hydrofoil Mystery, Half-Cracked, the Legend of Sissy Mary* (Theatre Baddeck); *A Midsummer Night's Dream* (Freewill Shakespeare); *The Magic Flute, The King and I, Don Carlos* (Hawaii Opera Theatre/ Opera Hong Kong); *Aida, La Traviata, Carmen, Les Feluettes* (+30 for Edmonton Opera); *Macbeth* (Calgary Opera); *Amadeus, A Streetcar Named Desire, Uncle Vanya* (The Atlantic Theatre Festival); *Pelagie* (Canstage and NAC). Founder/Actor/Manager (The Leave It To Jane Theatre); Production Stage Manager (2005 Queen's Commonwealth Visit). Tim makes his home in Edmonton with his wife Jocelyn and three dogs.



**STACY
VANDEN DOOL**
APPRENTICE
STAGE MANAGER

Stacy is thrilled to be making her Citadel debut! Born and raised in Lethbridge, Alberta, Stacy graduated with a BFA in Stage Management at the University of Alberta. Previous credits include: *Badlands Passion Play 2023*, *Badlands Passion Play 2022* (Badlands Amphitheatre); *London Road* (Tim Ryan Theatre); *Chrysothemis*, *Richard III* (U of A Studio Theatre); and *Dead Man's Cellphone* (Blevis Laboratory Theatre). Stacy would like to thank her family and her fiancé Matthew for consistently supporting her.

STUDENTS CLUB

PRESENTED BY **canada**  TM

Young people are integral to the artistic fabric of the Citadel Theatre, and we are committed to providing programs and initiatives that champion the development of their artistic identities. Students Club offers a unique glimpse into the world of professional theatre to a wide range of local junior and senior high school students. Prior to select performances of each of our mainstage shows, students participate in a highly engaging, interactive presentation with one of our region's talented theatre artists. Following the performance students stay for an informative talkback with members of the production's cast and crew.



We are pleased to welcome back Ellen Chorley as our Students Club facilitator for the 2023/24 season! Ellen Chorley is an Edmonton-based playwright, producer, performer and arts educator. She is the current Festival Director of Nextfest (Edmonton's annual emerging arts festival), the Academy Director of the

Theatre Network Summer Academy, an acting and playwrighting teacher for Foote Theatre School at the Citadel, and produces theatre for young audiences under the banner of Promise Productions. As a playwright, Ellen has had plays produced all over Canada and recently her play *Everybody Loves Robbie* won the Gwen Pharis Ringwood Award for Drama at the 2021 Alberta Literary Awards. Ellen believes that arts education is vital to the development of young people and she is passionate about using the medium of theatre to create community and belonging. For more information on Students Club, or to become a part of the program, please contact

groupbookings@citadeltheatre.com

THE CITADEL'S CORPORATE SEASON TICKET PACKAGE

We want you to be a part of the Citadel family – join our corporate subscription program and treat your clients and key staff members to world-class theatre! Ideal for small to medium-sized companies, corporate subscriptions are a ticket-based package that give you the flexibility to use your tickets in various ways.

MEMBERS OF THE CORPORATE SEASON TICKET FAMILY

- ARC Business Solutions INC.
- Canada Place Dental
- EY LLP
- Felesky Flynn LLP
- Midnight Sun Financial INC.
- Rehoboth Christian Ministries

RESTURANT & HOTEL PARTNERS

Season Ticket Holders (including Corporate) receive these amazing discounts from our partners*

- **CONTINENTAL TREAT FINE BISTRO**
10% Off All Menu items
- **ART GALLERY OF ALBERTA**
\$3 off on the full price of a regular admission
- **EDMONTON SYMPHONY ORCHESTRA**
10% off all regular Edmonton Symphony Orchestra or Winspear shows
- **THE WESTIN**
15% discount on the standard rate

JOIN TODAY!

Contact our Fund Development Team at (780)428-2141 or rbokenfohr@citadeltheatre.com or visit citadeltheatre.com/buy-tickets/corporate-season-tickets

*Subject to availability, conditions and restrictions may apply

celebrate all voices, all bodies, and all experiences.

This is a living statement that has been crafted by Citadel Theatre's Equity, Diversity & Inclusion Committee. If you have any questions, please contact:

EDICOMMITTEE@CITADELTHEATRE.COM

VISION STATEMENT

The Citadel Theatre believes in being Inclusive, Innovative, and International in our programming and practices

INCLUSIVE We celebrate, welcome and share stories with the many different communities that make up Edmonton. Our stages come alive with different voices and cultures. We strive to make our productions and our facilities inclusive and accessible; we believe the Citadel is a place where everyone belongs.

INNOVATIVE Our programming will celebrate new work, new performance styles and productions that experiment with dramatic form. We will develop large-scale new work by Edmontonian, Canadian and international playwrights. We will create collisions between different art forms, and present work that includes dance, music and digital storytelling.

INTERNATIONAL We will present and collaborate with exciting theatre-makers from around the world, as well as taking the fantastic work of the Citadel to audiences everywhere.

RECOGNIZING OUR PARTNERS

SEASON SPONSOR

Capital Power

PRESENTING SPONSORS



Pay What You Choose



Students Club



SIX



The Three Musketeers



School Matinees



Foundation

RBC Horizon
Emerging Artist



Little Shop of Horrors



TD READY
COMMITMENT

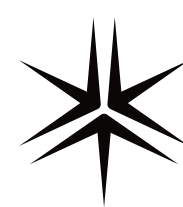
Play Development

PRODUCTION SPONSORS



EMERY
JAMIESON
LLP

Little Shop of Horrors



MILLER
THOMSON

The Sound Of Music

PERFORMANCE SPONSORS



The Sound Of Music

PROGRAM SPONSORS



Community Partner



Spotlight Program



Community Partner

OFFICIAL SUPPLIERS



MEDIA SPONSORS



DID YOU KNOW...

The Citadel Theatre is a registered charity?
We rely on the support of our incredible community to help us continue to offer relevant and entertaining performances on our stages and life-changing opportunities to artists of all ages and abilities through our educational programming. Please help us continue to enrich the cultural fabric of Edmonton by donating today at citadeltheatre.com!



**THE
CITADEL
THEATRE**

PREMIER SUPPORTERS

**THANK YOU TO OUR PARTNERS IN THE
CREATION OF THEATRE AT THE CITADEL:**

The Hole Family

The Eldon and Anne Foote Fund

Maclab Development Group

The John and Barbara Poole Family Fund

The Joseph H. Shoctor Fund

GOVERNMENT AND FOUNDATION FUNDERS

Edmonton



Funded by the
Government
of Canada

Financé par le
gouvernement
du Canada



Canada Council
for the Arts

Conseil des Arts
du Canada



Foundation

We acknowledge the support of the Canada Council for the Arts, which last year invested \$195 million to bring the arts to Canadians throughout the country.

Nous remercions le Conseil des arts du Canada de son soutien. L'an dernier, le Conseil a investi 195 millions de dollars pour mettre de l'art dans la vie des Canadiennes et des Canadiens de tout le pays.



DR. JOSEPH H. SHOCTOR, 1922 – 2001

EXECUTIVE PRODUCER AND FOUNDER
OF THE CITADEL THEATRE

JOE'S VISION

brought professional theatre to Edmonton

JOE'S DREAM

built the Citadel Theatre

JOE'S SPIRIT

continues to inspire the theatre we create today

JOE'S LEGACY

lives on through a generous gift to the Citadel
from his estate

HENRY HOLE, 1884 – 1954

On the Citadel's 30th Anniversary, a gift was made by the Company of Harry Hole, James F. Hole, Ralph K. Hole and Robert W. Hole on behalf of the Hole family — in honour of their late father, Henry Hole.

The Citadel Theatre is proud to honour Henry Hole's integrity, compassion and leadership in the dedication of this complex to his memory.

ANNUAL SUPPORT

THANK YOU! We extend our heartfelt thanks to all our donors, whose generosity plays a crucial role in ensuring our community has the opportunity to experience the joy of performing arts. All of our donors have a profound and lasting impact on the quality, accessibility, and relevance of the Citadel's productions, facility, and educational offerings.

STEWARD

Gifts of \$10,000+

The Estate of
Marguerite Bowen
Bruce Hagstrom
Ada Hole
Al & Fran Olson
Kayla Shoctor
Marshall & Debby Shoctor
Overhead Door Co.
of Edmonton

ARTISTIC DIRECTOR

Gifts of \$5000-\$9999

3 Anonymous
ARC Business Solutions
The Polar Foundation
David & Janet Bentley
Family Fund
Dr. Lorraine Bray & Jim
Carter OC
M & J Dal Bello
Lesley Cormack
Randy & Wendy Dupree
Brent & Deborah Hesje
Marc de La Bruyère &
Stacy Schiff
Grace & Arnold Rumbold

DIRECTOR

Gifts of \$2,500 - \$4,999

Weir Family Fund
Mitchell Family Fund
Bruce & Carol Bentley
Brian & Barbara Burrows
James Casey & Gail Verity
Watson Family

Sandra Anne Haskins
Gail & Andrew Jarema
Wolfgang & Beth Kaminski
Allen & Patti Kramer
Arliss Miller
Esther Ondrack
The Poole Family
Rotary Club of Edmonton
Aroon Sequeira
The Watson Family
Sam Withanachchi
Ralph Young

STAR

Gifts of \$1000-\$2499

2 Anonymous
Flanagan Foundation
McCoy Family Foundation
Harvey & Judith Abbott
Jennifer Addison
The Honourable
Darlene Acton
Diana & Laurence
Andriashek
Roger Babichuk
Jeff Boadway
Frank Calder
Arlene Gladstone &
Hamish Cameron
Marguerite & Zbigniew
Chrzanowski
Judith Cosco
In Memory of Carol
Engelking
Todd & Judy Gilchrist
J.G. Greenough
Bruce E. Hagstrom
Christopher Head
J.D. Hole

Brenda & John Inglis
Norman & Valerie
Kneteman
Liz Kohle
Sylvia A. Kother
Ken & Jennifer Kouri
Donna Krucik
James & Maggie Laing
Robert & Dawn Lemke
Daryl Cloran & Holly Lewis
Lauren Lucid
Peter & Dorothea
MacDonnell Fund
Linda & Kim MacKenzie
Family Fund
D Scott Mathieson
Jack & Lorraine McBain
Laurie & Dave McInnes
David & Katrina Mundy
Lewis & Lindsay Nakatsui
Armand Nielson
Pearl Neilsen
Catrin Owen
Ted & Debbie Power
Darren Pratch
Linda Pratch
Sir Francis Price &
The Honourable
Marguerite Trussler
Lawrence A. Pshyk
Suzanne Reilly
Sol and Marilyn Rolingher
Alan Rose
David & Rachel Ross
Simone Rudge
Louise Severin
Lisa Miller & Farrel Shadlyn
Chris & Dale Sheard
Kimberlee Stadelmann

Lee Ann & Lorne Tyrrell
David Verbicky
Kim & Don Wheaton
Dr. Ghalib Ahmed &
Derek Wicks
Kim Thompson &
John Wilson
Leon & Vonnie L. Zupan

LEAD

Gifts of \$500-\$999

4 Anonymous
Allaine Fund
Gary Boehm Fund
Carol Blair &
Associates Inc.
Timbers Consulting &
Hazops Inc
Dagny & Graeme Alston
Barbara Blackley
Rita Burns
Chris & Leah Burrows
Elizabeth Cherry
Heather Chorley
Douglas Bruce Duval
Andy & Marianne Elder
Liane Rae Faulder
Jean Fukushima
John Green
Sari Haas
Mary Sturgeon &
Matthew Halstead
Dave & Janet Hancock
Nancy Heule
Elizabeth Hillier
Bill & Jana Holden
Carol R. Jackson
Hanae Kiyooka
Linda & Siegrfried Kowand
Christine Lefebvre
Theresa Lema
Mary Lister
Pat Luxford
Stephen &
Catherine Madsen
Brad Mastaler
Laurie McCaffrey
Douglas & Claire
McConnell
Alan & Patricia McGeachy
Gordon & Agneta
McKenzie
Averie & Carman McNary
William Mustard
Edna & Cal Nichols

Carolyn O'Hara
Cliff & Connie Otto
Fred & Helen Otto
Vital & Colleen Ouellette
Fred & Mary Paranchych
C. Thomas & Judith
Peacocke
Jean & Edward Posyniak
Barb J. Prodor
Lawrence &
Mary Anne Pshyk
Richard Remund
Tina & Tony Rota
Constance Scarlett
Marianne & Allan Scott
Delores Stefaniszyn
Merle & Neil Taylor
Michael & Kathleen Tomy
Robert Van Soest
Shannon van soest
Doug & Dorothy Warren
Robert & Ann Weir
Sarah Wylie

SUPPORTING

Gifts of \$100-\$499

21 Anonymous
Jean & Gerry Staring Fund
Sylvia A. Kother
Theresa Agnew
Allan Alcock
Edie & Greg Alcorn
Kathryn Aleong
Sandra M. Anderson
Martin & Anna Andrea
Gail Andrew
James Archibald & Heidi
Christoph
Scott Arndt
Vance Avery
Brenda Barber
Lorelli Barbutza
Maurice & Annette Bastide
Steve Bates
Cecilia Baxter
Lola Baydala
Cara Bedford
Fran Belxberg, in Memory
of Kayla Shoctor
Andrew & Susan
Benkovich
Isabel Bernete
Mrs. Sue & Greg Bird
Kathey & Mark Birtles
Stan Bissell

Bev Blasetti
Julia Boberg
Angie Bogner
Judie Bond
Ed & Marianne Bouthillier
Michael & Shayna Bowling
Kathleen Bowman
Heather Boyd
Teresa & Robyn Boyko
E Ross Bradley
Dr. Beverley &
John Brennan
Courtney Brin
Ainsley Brown
Margery E. Brown
Angela C. Brown
Linda Brownlee
Denise I. Bryden
Fred West & Chris
Brzezowski
Janet Buckmaster
Norman & Anne Burgess
Greg Burghardt
Kevin & Sarah Burghardt
Lucille Birkett &
Randy Busby
Susan Butler
Irene Cameron
Janet & Kevin Campbell
Mary K. Campenot
Lynda M. Cantell
James & Joan Carlson
Raymond Caron
Martin Carroll
Justine Carvalho-Moreira
Irene Ann Cassady
Kate Chambers
Mr. Brian Charette
Jacqueline Charlesworth
Sharleen M. Chevraux
Rohit Chokhani
Peni Christopher
Brent Christopherson
Wayne Church
Gordon & Janet Clanachan
Nancy J. Clark
Jennifer Clover
Shirley Cockburn
Ruth Collins-Nakai
Charlotte & Gerry Cooper
Marcie Coutts
Karen Cox
Kim & Rick R. Craig
Elizabeth Cruickshank
Robert Crosbie

Patrick & Luxie Crowe	Gaie Goin	Bob Kamp
Pemme Cunliffe	Marla Gordulic	Dorothy Keeler
Leeann Currie	Lila Gould	Paula Kelly
Chris Danchuk	Bob & Alayne Graves	Sheilah Kelly
Ruth Daney	Michele Eickholt &	Gerry Kendal
Marilyn Darwish	Lee Green	Janice Kent
Gwen C. Davies	Royston Greenwood	Mr. Monte Koeing
Karen Davison	Paul V. Greenwood	Raeanna Koo
Dorothy Dawson	Audrey Groeneveld	Barbara Krause
Lisa Dayanandan	Ali Grotkowski	Brenda Krutzfeldt
Frank C. DeAngelis	Kathy Gynane	Karen Kvill
Christine Anne Dechoretz	Ben Ha	Christine Kyriakides
Marcella Dejong	David &	Adam Lachacz
Brian & Anita Denniss	Marion Haggarty-France	Joy & David Lardner
Sherry DeSoete	Catherine &	Iryna Laschuk
Eva Deze	James Hammond	Ruth & George Lauf
Jill C. Doiron	Cathy & David Harbinson	Tracey Laventure
Karen & John Donahoe	Julie Harvey	Kathryn & Steven Lavery
Margaret Dorey	Faye Hatch	Don & Gwen Lawrence
Brad & Elaine Doucette	Ronald & Marcie-Lynne	Gordon T. Lea
Melissa Doucette	Haukenfrers	Marilyn Lebuke
Carol Dreger	Lois & Chan Hawkins	Sigmund Lee
Jim & Pauline Drinkwater	Patricia Hengel	Valda Levin
Julie-Ann May Dron	Jocelyn Hey	Paul & Clarissa Lewis
Margaret Dudley	Ainsley Hillyard	Myron & Maureen Liviniuk
Sylvia Duffus	Patsy Ho	Sandra & Jim Lockhart
Ian & Lynne Duncan	Sandra Hobbs	Cathy Lord
Roland Duquette	Bruce & Gail Hogle	Chris & Cecile Lord
Karen Dyberg	Victoria Holota	Glenn Walmsley &
Erin & David Edwards	Donna Holowaychuk	Lois Love
Joy Edwards	Scott Horton	Liz Luchko
Beverley Ellingson	Lauretta Howard	Christie Lutsiak
Harold English	Kathy Howery	Victoria Anne Luxton
Alison Eshpeter	Dianne & Robert Hrabi	Janice MacDonald
Dean M. Evanger	Theresa Hryciw	M. Louise MacGregor
Solymos Family	Douglas & Joan O. Hube	James I. MacSween
Elizabeth Faulder	Kelvin & Carol Hussey	Don & Christina Mah
Gail Faulkner	Rob & Judy Hutchinson	Jo Anne Mahood
Martin &	Clare Irwin	Isobel Mailloux
Peggi Ferguson-Pell	Margaret L. Iveson	Linda Maki
Lois Field	Douglas & Diane Jack	Andrew & Anne Malcolm
Lil Filewych	Johnson	Glynis & Doug Maley
Robert T. Fleming	Marilyn Jackson	John Markey
Cathy G. Flood	Erik & Franziska Jacobsen	Diane Marsh
Sylvia H E. Flood	Ernie Jacobson	Estelle I. Marshall
Tim Fort	Paula Jamison	Neil & Pamela Martin
Jean-Pierre Fournier	Susan Jane	Wendy Mathewson
Joe & Pat Fenrich	Louise Jensen	Donna Maxwell
Judith Fris	Lori Stewart & Jack Jervis	Linda May
Barb Funk	Ronald J. Jewitt	Roisin A. McCabe
Myrna Fyfe	Audra & Kevin Jones	Ian & Linda McConnan
Barbara & Ken Galm	Kelvin Jones	Roxanne McLean
Lorie Garritty	Erwin Kadach	Anne McLellan
Gordon Giles	Brian & Ida Kaliel	Juliet McMaster
Rhonda L. Gillrie	Jatinder & Mala Kalra	Shane McMillan

Cheryl McPherson	Corrie Redl	Alayne J. Sinclair
Deb McRae	Joan Redman	Gerry & Barbara Sinn
Linda Medland Davis	Gary Redmond	Brune Sinneave
Donna Meen	Barbara Redmond-Ellehoj	Sheila Sirdar
Dr. Bubbles & Evelyn Meer	Wes Owen Rempel	Paula Siwik
Daniel Melenchuk	Philip Renaud	Yvonne Slemko
Laurie Mereu	Garry & Donna Rentz	Marie Slusar
Mark Mertens	Eric Rice	Lynn Smarsh
Darel Mesher	Sheila Ringrose	Jennifer Smid
Jennifer Mikula	Ron & Carol Ritch	Jacqueline Smith
Andrea B. Moen	Mary Ritchie	Shelley Smith
Shona Monforton	Lindsay C. Robinson	Sherry Smith
Marie Montgomery	Andrea Roche	Sandra Smith
Bonnie Moon	Dean & Jan Rokosh	Steven Snyder
Gail Moores	Betty Ross	Thomas Snyder
Gordon & Cathy	Susan Green & Stuart Roth	Bill & Linda Softley
Moorhouse	Phil Roy	Dale Somerville
Chantal Moreau	Beverley J. Roy	Wanda & Tracy Sorotsky
R. Morgan	Merceline Runzer-Steeves	Tim Spelliscy
Joan Morrison	Tetyana Ryabets-Zuk	Keith & Bev Spencer
Sonya & Greg Mowbrey	Orla Ryan	Terri & Michael Spotowski
Leanne M. Nadwidny	Mitch & Maryann Sabourin	Lawrence Staples
Lynne J. Neis	Susan V. Sadler	Elout & Adalei Starreveld
Anne Nothof	Penny Salmon	Graham J. Steel
Tony Nutting	Deborah Salo	Martha Steenstrup
Jennifer J. Oakes	Hugh & Margaret Sanders	Leland & Judy Stelck
Penny Omell	Kim Sanderson	Dave & Gail Stolee
David & Paula Onderwater	Adrienne Sannachan	Bill Stoley
James & Beverley Orioux	Michele Sawatzky	Ben & Laraine Strafford
Mieko Ouchi	Andrew & Janet Schalm	Keith Strong
Kathy Packford	Roland & Dolores Schech	Sydney Stuart
Stacey & Chris Padbury	Stan & Deb Schellenberger	Caroline Stuart
Marian Palahniuk	Martha Schiel	Jenny Stuart
Barbara Panich	Rhonda Schnee	Craig Stumpf-Allen
Bhupen & Lata Parekh	Ian Schultz	Frank & Rosanne Thede
Carol Pawlenchuk	Culley Schweger Bell &	Allison Theman
Donna Pawliw	Steven Bell	Tina Thomas
Leslie and Rick Penny	Marianne Scott	Maggie R. Thompson
Richard & Catherine Perry	Nelson Scott	S. Bruce Thomson
Carlie & Greg Persson	Shauna J. Scott	Karen L C. Titanich
Linda Peter	Tony Scozzafava	Tim Toohey
Tammy Pidner	Dawna Scrivens	Mary-Ann & Andy
Marija Pipunic	Nancy Scrymgeour	Trachimowich
Ron Pollock	Craig Neuman &	Jean & Jim Triscott
Heather Pontikes	Leita Seiver	Alana Mae Tucker
Paul & Leslie Precht	Rita Sequeira	Lorene Turner
Susan Priestner	Jack Seto & Audrey Lowe	Nancy Tymchak
Moira Proskin	Tom & Sheila Shand	Gary Unger
Diana Purdy	Tami L. Shandro	Carol Vaage
Paul Puszczak	Sanjay & Suvridha Sharma	Henriette van Hees
Marilyn & Michael	Glenn & Margaret Sharples	Eric van Walsum
Quaedvlieg	Deb Shaw	Daniel A. Vandermeulen
Andrew & Carol Raczynski	Sol & Shirley E. Sigurdson	David & Heather Vickar
Jeff Ramage	Vivian Simmonds	Marie-Louise Vieira
Dylan Reade	Phil & Tracy Simons	Chris Vilcsak

Lori Anne Wall
Scott Wallace
Nicole Watts
Mr. Douglas Webster
Michele Wedemire
June Weldon
William & Debra Wells
Daniel Westfall
Maya Wheelock
Audrey J. Whitson
Kathy & Lorris Williams
Eva Willox
Willis Winter
Daniel & Tonya Wolfe

Lynn Wolff
William & Dorothy
Wolodko
Richard & Vivian Wong
Debra Wooding
Jeff Wright
Peter & Joan Wright
Susan Wright
Keith Wylie
Randall & Nancy Yatscoff
Linda M. Youell
Betty Young
Mary Anne Yurkiw
Ms. Mara O. Zanier

Diane Zinyk
Lorna Zucchet
Peter & Joan Wright
Susan Wright
Keith Wylie
Randall & Nancy Yatscoff
Linda M. Youell
Betty Young
Mary Anne Yurkiw
Ms. Mara O. Zanier
Diane Zinyk
Lorna Zucchet

To learn more about donating to the Citadel Theatre, please visit www.citadeltheatre.com or contact Rebekah Andrews at randrews@citadeltheatre.com. Charitable BN 11922 7387 RR0001. Every effort has been made to ensure the accuracy of our donor information. Listing includes donations of \$100 or more. If we have made an error or omission, please contact us at randrews@citadeltheatre.com. We apologize for any inconvenience.



CITADEL STAFF

BOARD OF GOVERNORS

Solomon Rolingher
K.C. Chair

Marshall Shoctor
K.C. Past Chair

Bruce Bentley
Treasurer

Tom Redl
Secretary

Wendy Dupree
Ex Officio

Frederick K.
Campbell

Jacqueline
Charlesworth

Ada Hole

Arliss Miller

Aroon Sequeira

Chris Sheard

Kayla Shoctor

Dr. Robert Westbury

Sheila Witwicky

Ralph Young

BOARD OF DIRECTORS

Jennifer Addison
Chair

Constance Scarlett
Vice Chair

Jeff Boadway
Past Chair

Roger Babichuk
Treasurer

Hunter Cardinal

Wanda Costen

Derriquer DeGagné

Sandra Haskins

Kaitlyn Hunder

Marcie Kiziak

Joy Lardner

Shannon Marchand

Lindsay Rainbow

HONOURARY DIRECTORS

Jack N. Agrios

Jane Batty

Ken Bautista

Joanne Berger

Christine Bishop

Dan Block

Guy Bridgeman

Frank Calder

Gary G. Campbell

Betty Carlson

Donald A. Carlson

Marilyn Cohen

Reg Copithorne

Len Dolgoy

Allison Edwards

Dennis Erker

Grant Fairley

John C. Forster

Frank Gibson

James Gillespie

Jane Halford

Jean Hamilton

Brian Hetherington

Becky Hole

Ted Hole

Mike House

Gary Killips

Richard Kirby

Stuart Lee

Beverlee Loat

Al Maurer

Ashif Mawji

Maureen McCaw

Lisa Miller

Susan Minsos

Terry Nistor

Bob Normand

Catrin Owen

Ted Power

Jerry Preston

Henry (Hank) Reid

Rob Reynolds

Charlotte Robb

Margot Ross-Graham

Barbara Shumsky

Peter Silverstone

Gaurav Singhmar

Larry Staples

Esther Starkman

Marianne Takach

Merle Taylor

Mr. Justice Dennis R.
Thomas

Brian Tod

John Tweddle

Brian Vaasjo

A.H. Wachowich

Bob Walker

Dr. Marvin Weisler

Bart West

Eve Willox

David Wilson

Doris Wilson

John Yerxa

HONOURARY GOVERNORS

David Bentley
Marc de La Bruyère
Anne Foote
J.G. Greenough
Sandy Mactaggart
Jack McBain

LEADERSHIP

Daryl Cloran
Artistic Director
Alan Nursall
Interim Executive Director

ARTISTIC

Jessie van Rijn
Producer
Mieko Ouchi
Associate
Artistic Director
Luc Tellier
Director, Education
& Outreach
Peni Christopher
Asst. to the A.D.
Company Manager
Wayne Paquette
Associate Producer
Diana Stevenson
Manager, Foote
Theatre School
Kristi Hansen
Associate Artist
Ellen Chorley
Students Club Facilitator

ADMINISTRATION

Paul Johnson
Director of Finance
Ting Ting Li
Accounting Clerk
Bettyanna Huggins
Payroll
Shirley Tran
Payroll

Remi Wu
General Accountant
Kayla van Sterren
HR Generalist
Rebekah Andrews
Executive Assistant

FUND DEVELOPMENT

Sydney Stuart
Director, Fund
Development
Rachel Bokenfohr
Corporate Giving Manager
Rebekah Andrews
Coordinator, Fund
Development
Vanessa Wilson
Fund Development
Administrative Asst.

MARKETING AND SALES

Cassie Kupka
Marketing Director
Kristen Hiemstra
Creative Director
Susanne Chmait
Social Media and
Communications
Coordinator
Rebecca Harding
Digital Web Designer
Arthur Mah
Videographer

HOSPITALITY

Hayden Weir
Director of Hospitality
Cameron Freitas
Asst. Hospitality Manager
Gabby Bernard
Melanie Blake
Colton Cameron
Alex Cherovsky
Kylie Dobransky

Madeleine Doucet
Shyanne Duquette
Saige Evers
Justin Mitchell
Graham Mothersill
Jake Mouallem
Priya Narine
Anna Robinson
Kera Stevenson

RENTALS

Sam Kennedy
Rentals Manager
Susan Urlacher
Rental Coordinator

GUEST SERVICES

Eden Edwards
Senior Sales Manager
Ben Osgood
Asst. Patrons Relations
Manager and Tessitura
Data Specialist
Melissa Budinski
Front of House Manager
Josephine Hendrick
Education & Group Sales
Administrator
Brittany Hinse
Education & Group
Sales Asst.

GUEST SERVICES SUPERVISORS

Kevin Cambridge
McKinna Elliott
Brittany Hinse
Rune Jander
Emma Jones
Davis Shewchuk
Logan Stefura
Elaine Vo
Kate Walker
Vanessa Wilson

GUEST SERVICES REPRESENTATIVES

Colin Bluekens
Adriana Burns
Natalie Clark
Andraya Diogo
Sean Herbert
Abby Koshka
Melanie Letourneau
Samantha Mann
Abby McDougall
Rose Miller
Alex Reyes
Craig Stumpf-Allen
Maia Trotter
Jessica Ussher
Stacy Vanden Dool
Alex Voutchkov
Katie Yoner

PRODUCTION

Michael Erwin
Director of Production
Patrick Fraser
Technical Director
Michelle Chan
Asst. Production Manager
Jacinda Grummett
Asst. Technical Director
Matthew Koyata
Asst. Technical Director
Jenna Kerekes
Administrative Asst.
Nick Rose
Head of Audio
Mitch Labrosse
Asst. Head of Audio
Derek Miiller
Audio Operator
Peter Locock
Head of Scenic Carpentry
Jeff Howe
Asst. Head of Scenic Carpentry

Tegan Herron
Head of Electrics
Ben Eastep
Asst. Head of Electrics
Andrée Simard
Head of Scenic Paint
Megan Paliwoda
Assistant Head of Scenic Paint
Sarah Karpyschin
Head of Props
Angie Sotiropoulis
Asst. Head of Props
Marc Anderson
Head of Stage Carpentry
Brendan Nearey
Stage Carpenter
Marissa Milley
Stage Carpenter
Patsy Thomas
Head of Wardrobe
Olivia Derksen
Head of Wardrobe Running
Janessa Barron
Dresser
Mandy Mattson
Wardrobe Maintenance
Adam Blocka
Wardrobe Maintenance
Katie Patton
Head of Wigs
Stephanie Ryder
Wigs

FACILITY

Bill Daniels
Facilities Director
Yang Yang
Maintenance Manager

JANITORIAL

Bee Clean Services

SECURITY

Alberta Crowd Management

FOOTE THEATRE SCHOOL INSTRUCTORS

April Banigan
Billy Brown
Ellen Chorley
Sydney Cogan-Grahn
Emi Gusdal
Crystal Hanson
Sally Hunt
Sydney Keenan
Moses Kouyaté
Josh Languedoc
Emily Lizotte
Barb Mah
Shanni Pinkerton
Damon Pitcher
Clayton Plamondon
Jaimi Reese
Amanda Samuelson
Pamela Schmunk
Eileen Sproule
Nathaniel Tesfaye
Emily Thorne
Kim Turner

YOUNG COMPANY INSTRUCTORS

Deviani Andrea
Mel Bahniuk
Tracy Carroll
Patricia Darbasie
Kim Denis
Patrick Lundeen

VOLUNTEERS

Zoe Afaganis	Brad Heller	Linda Orlecki
Hermione Ainsworth	Diane Helmers	Susan Patenaude
Hasra Ali	Kristen Hennessey	Gisele Poor
Johanna Andreoff	Maria Hollinshead	Doug Racine
Judith Babcock	Doug Hunter	Leila Ragoonanan
Luis Ballester	Joan Johnston	Joan Redman
Karen Balon	Jodi Jones	Barbara Reinhardt
Karin Banasch Vail	Robert Jones	Lori Ristoff
Coby Benoit	Joanne Kallal	Cheryl Ritchie
Shelley Benson	Hanae Kiyooka	Sukhjit Saimbhee
Erika Beyer	Robin Knight	Susan Schroter
Bernie Bolton	Eva Kopecka	Angela Seery
Florence Borch	Arndt Kuethe	Theresa Shea
Ken Borch	Janice Kuethe	James Smibert
Alan Burkin	Wendy Kurtz	Linda Smibert
Margot Byer	Susan Lauridson	Victoria Spang
Patrick Caron	Sylvia Lee	Cinnamon Stacey
Dee Cartledge	Karen Lewis-Caron	Deb Stack
Rob Cauti	Jim Linnen	Rhonda Taft
Carmelle Cooper	Elizabeth Luchko	Diane Trithardt
Jack Diacon	Rita MacDonald	Christine Tupper
Valerie Dyck	Ross Machetchuk	Lacey Untereiner
Lil Filewych	Bob Matfin	Brenda Voyce
Brenda Fraser	Linda McMurdo	Lisa Welshman
Dan Germain	Donna McKay	Talia West
Bonita Gillespie	Sam Michealchuk	Liz White-MacDonald
Betty Grudnizki	Karen Miller	Catherine Wirt
Julie Harvey	Janice Minamide	Bonnie Connelly Wilson
Jeff Haswell	Joan Murchie	Vanessa Wilson
Rosemarie Heaney	Andrea Newman	Dave Wolkowski

Thank You

to all our volunteers!
You help us make the magic possible.