



THE THREE MUSKETEERS

Adapted by **CATHERINE BUSH**
From the novel by **ALEXANDRE DUMAS**

A co-production with Arts Club Theatre Company

**THE
CITADEL
THEATRE**

SEASON
SPONSOR

**Capital
Power** 

PRESENTING
SPONSOR

IG WEALTH
MANAGEMENT

THE CITADEL THEATRE

DARYL CLORAN
ARTISTIC DIRECTOR

ALAN NURSALL
INTERIM EXECUTIVE DIRECTOR



  @CITADELTHEATRE  @CITADELTHEATREYEG

The video or audio recording of this performance by any means is strictly prohibited.

WE WISH TO ACKNOWLEDGE that the land on which we gather is Treaty No. 6 territory and a traditional meeting ground and home of the First Nations, including both the treaty signatories Cree, Saulteaux, Nakota Sioux, Stony and Cree-Iroquois as well as other Indigenous peoples, such as the Blackfoot and Métis, who occupy this land. We extend our appreciation for the opportunity to live, create and perform on this territory.

Nikistêyhtamâkânân oma askîwihtâwin ita kâ mâwasakôyâhk Nikotwâsik Kâ akihtêk omâmawôpayônôwâw Nistam Îyinôwak, nânapo ôkih tipahamawâkan tahkikwanênkêwak-Nêhîyawak, Nahkawînôwak, Opwâsîmowak, Asinî Pwâtak êkwah Nêhîyaw Paskosikanak-êkwah kotakak Îyinôwak, tâpiskôc Kaskitêwayasitak êkwah Âpihtwâyak, kâkîh kikîwîhkêcik otah. Nitâniskê nanâskôtênân tawâw ôtah êh ayâyâhk tita wîci pimâtisîhtamâhk, tita osîhcikêyâhk êkwah tita nôkohtihwêyâhk otah askîwihtâwinihk.

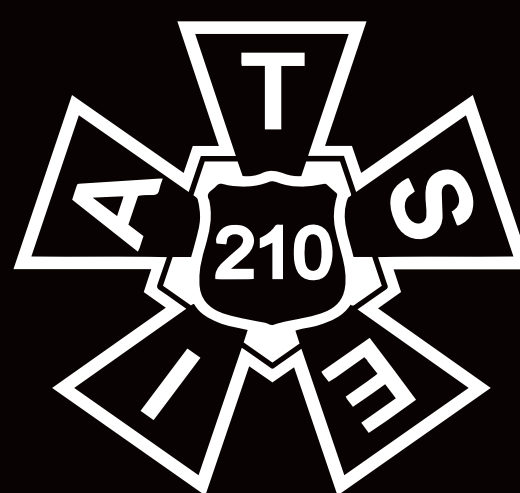
The Citadel engages, under the terms of the Canadian Theatre Agreement, professional artists who are members of the Canadian Actors' Equity Association. Production personnel for the Citadel Theatre are members of the International Alliance of Theatrical Stage Employees (I.A.T.S.E.)

‡ Indicated designers on this production are represented by the Associated Designers of Canada, IATSE Local ADC659.



ADC
659

Associated
Designers of
Canada



THE THREE MUSKETEERS

Adapted by CATHERINE BUSH

from the novel by ALEXANDRE DUMAS

CAST

Alexander Ariate

Porthos

Scott Bellis

Cardinal Richelieu, Ensemble

Nadien Chu

Mme de Treville, Abbess,
Ensemble

Chris. W. Cook

Ensemble

Braydon Dowler-Coltman

Aramis

Daniel Fong

D'Artagnan

Alexandra Lainfiesta

Queen Anne, Kitty, Ensemble

Felix LeBlanc

Lord Buckingham, Ensemble

Paul-Ford Manguelle

Ensemble

Darren Martens

Athos

Jade V. Robinson

Constance Bonacieux,
Ensemble

Garett Ross

M Bonacieux, Ensemble

Farren Timoteo

King Louis, Planchet,
Ensemble

John Ulliyatt

Rochefort, Innkeeper,
Ensemble

Anita Wittenberg

Ensemble

Morgan Yamada

Jussac, Braddock, Felton,
Ensemble

Bahareh Yaraghi

Milady de Winter, Ensemble

UNDERSTUDIES

Chris. W. Cook

King Louis/Planchet,
Jussac/Braddock/Felton,
M. Bonacieux

Paul-Ford Manguelle

Porthos, D'Artagnan,
Lord Buckingham

Jade V. Robinson

Queen Anne/Kitty

Garett Ross

Rochefort/Innkeeper

Anita Wittenberg

Cardinal Richelieu,
Mme de Treville/Abbess,
Milady de Winter

Morgan Yamada

Constance, Aramis

CREATIVE TEAM

Daryl Cloran

Director

Cory Sincennes

Set, Props and
Costume Designer[‡]

Sophie Tang

Lighting Designer[‡]

Jonathan Lewis

Sound Designer

Jonathan Hawley Purvis

Fight Director

Anna Kuman

Choreographer,
Intimacy Director

Elena Belyea

Assistant Director

Garett Ross

Fight Captain

Morgan Yamada

Intimacy Captain

Madison Henry

Stage Manager

Frances Bundy

Assistant Stage Manager

Tracey Byrne

Assistant Stage Manager

Charlotte Braid

Apprentice Stage Manager

VENUE Shoctor Theatre

AGE RECOMMENDATION 14+

RUN TIME Approximately 2 hours and 15 minutes (Act I: 70 minutes, Intermission: 20 minutes, Act II: 45 minutes). All timings are approximate

SYNOPSIS Adapted from the novel by Alexandre Dumas, this comedy follows the swashbuckling adventures of Athos, Porthos, Aramis and the young, brave D'Artagnan. Newly arrived to Paris, with the skill of a swordsman and the heart of a warrior, D'Artagnan wishes to join the renowned Musketeers, but first he must prove himself worthy. He sets off with The Musketeers to thwart a plot by the evil Cardinal Richelieu. Together, they'll fight All For One, and One For All!

THANK YOU TO U of A Studio Theatre Wardrobe, Banff Centre for Arts and Creativity Wardrobe, Department, Shaw Festival, Stratford Festival

This adaptation of *The Three Musketeers* was commissioned and produced by Barter Theatre in Abingdon, VA. Richard Rose, Producing Artistic Director.

It was first produced in New York City by The Classical Theatre of Harlem. Ty Jones, Producing Artistic Director.

Sparking creative minds and powering a bright future

Proud to be the Season Sponsor of the Citadel Theatre for over 10 years.

Capital Power 
Power



capitalpower.com



WELCOME TO



All for One and One for All has been our motto all season. It has been a season full of stories of characters standing up for each other and for their communities. And Catherine Bush's swashbuckling new adaptation of this classic story of camaraderie and bravery is the perfect way to end our season on a high note.

This production of *The Three Musketeers* is a celebration of everything that is great about theatre and everything that is special about the Citadel. This production is a visual treat. Cory Sincennes' set and costumes are gorgeous and have been built right here at the Citadel by our incredible carpentry and wardrobe departments. Jonathan Hawley Purvis has created fantastic (and athletic!) fights that show off the skills of our amazing cast. Sophie Tang's lighting, Jonathan Lewis' compositions and the work of seventeen incredible actors and

countless skilled crew and stage management make this production a theatrical sensation.

This production is a partnership with the Arts Club Theatre Company in Vancouver. The show will play at the Arts Club in January/February 2025. If you have friends or family in Vancouver, please encourage them to check it out!

Thanks so much for joining us.
Enjoy the show!



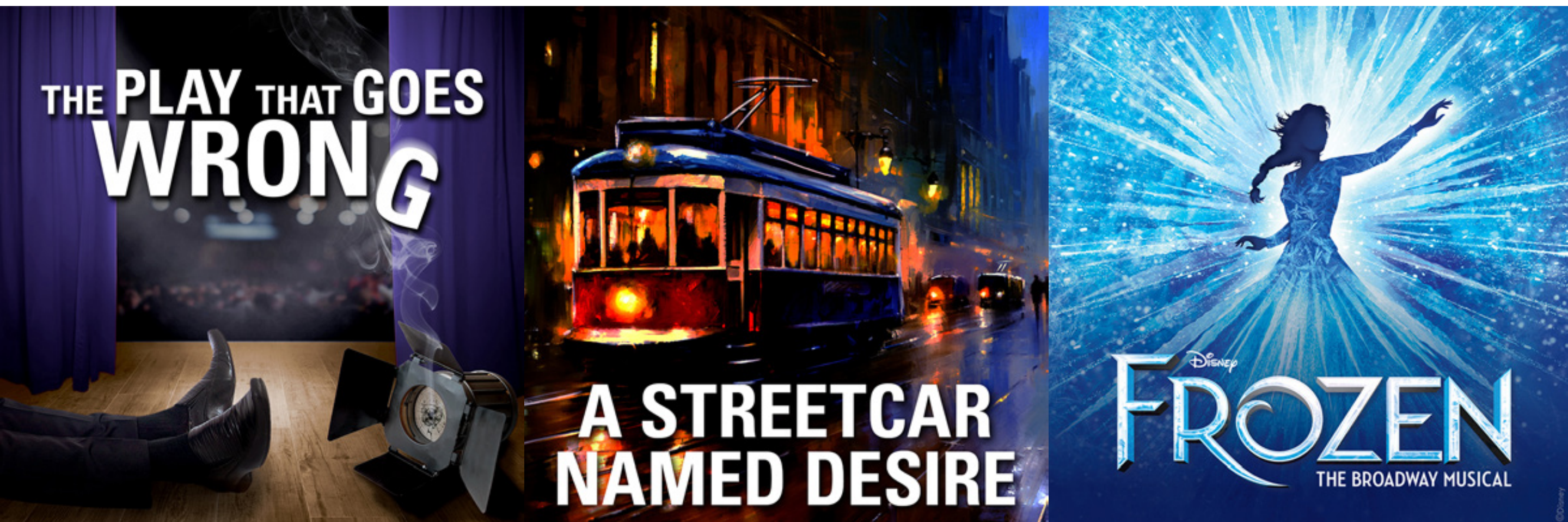
A stylized, handwritten signature in black ink, appearing to read 'Daryl Cloran'.

Daryl Cloran

ARTISTIC DIRECTOR

dcloran@citadeltheatre.com

P.S. We have announced our exciting 2024/25 Season! The season starts this summer with a hilarious production of *The Play That Goes Wrong*, followed by Tennessee Williams' classic drama, *A Streetcar Named Desire*. And this winter we're producing Disney's hit family musical *Frozen*! It's an incredible season of fantastic shows - we hope you'll join us for all of them!





Working together



We want to see a world without Alzheimer's. That's why IG Wealth Management has partnered with the Alzheimer Society to support its largest fundraiser, the **IG Wealth Management Walk for Alzheimer's**, and provide free financial empowerment seminars through our **Empower Your Tomorrow** community program to help people and families impacted by dementia take control and improve their quality of life.

ig.ca/empoweryourtomorrow

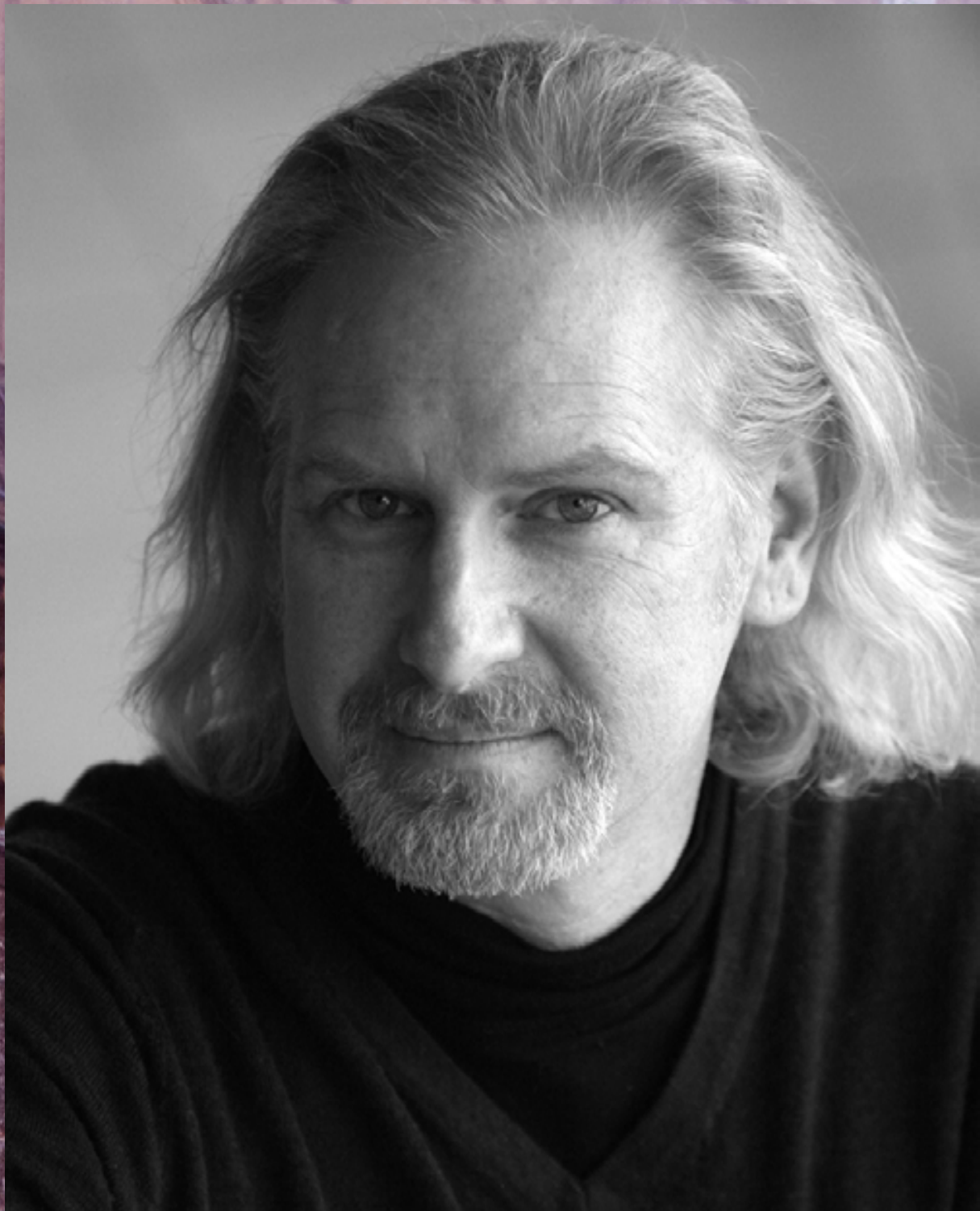
ig.ca / [f](#) / [t](#) / [v](#) / [in](#) / [i](#)

Trademarks, including IG Wealth Management are owned by IGM Financial Inc. and licensed to subsidiary corporations.
© Investors Group Inc. 2024 EYT1958MA_E (02/2024)



ALEXANDER ARIATE PORTHOS

Alex is an Alberta-based artist and is so thrilled to be working on one of his favourite stories with such an exceptional team. Previous Citadel credits include: *The Importance of Being Earnest*, *CLUE*, and *Peter Pan Goes Wrong* (Citadel Theatre/The Arts Club). Other selected credits include: *The Merchant of Venice*, *The Tempest*, *Othello*, *Twelfth Night*, and *Winter's Tale* (The Shakespeare Company); *Might As Well Be Dead*, *Murder On The Orient Express*, and *HEIST* (Vertigo Theatre); *Listen Listen* (Teatro La Quindicina). Film & Television: *Fortunate Son* (CBC).



SCOTT BELLIS

CARDINAL RICHELIEU,
ENSEMBLE

Scott Bellis is an actor/director based in BC who has worked across Canada in over 180 theatre productions of all shapes and sizes since 1987. His last appearance at the Citadel was in 2001 in a touring production of a show called *The Number 14*. He is also an acting instructor who has taught Shakespeare for the Banff/Citadel Academy; is the recipient of five Jessie Richardson Theatre awards; serves as Council President of Canadian Actors' Equity Association; and is staying in an AirBnB in Oliver. Feel free to stop by!



NADIEN CHU

MME DE TREVILLE,
ABBESS, ENSEMBLE

Nadien Chu is a theatre artist who resides on Treaty 6 Territory. She is thrilled to be involved in this fantastic piece with this amazing team. Special thanks to Daryl Cloran, KS, LC, FC and Jempa. Select theatre credits include: *Pretty Goblins*/Sterling Award (Workshop West); *As You Like It* (Theatre Calgary); *The Thin Man* (Vertigo Theatre); *All the Little Animals I Have Eaten* (One Yellow Rabbit); *Vanya, Sonia, Masha and Spike* (Alberta Theatre Projects); *Macbeth, Titus Andronicus*/ Sterling Award (Freewill Shakespeare Festival); *The Importance of Being Earnest, Pride and Prejudice, Network, Jane Eyre, The Garneau Block, The Tempest, The Penelopiad, August Osage County* (Citadel Theatre); *Pig Girl, Palace of the End* (Theatre Network).



CHRIS W. COOK

ENSEMBLE

UNDERSTUDY:
KING LOUIS/PLANCHET,
JUSSAC/BRADDOCK/FELTON,
M. BONACIEUX

Originally from Camrose, Alberta, Chris has called Edmonton home since 2008. Select theatre credits include: *A Christmas Carol* and *Romeo and Juliet* (Citadel Theatre); *Sweat* (Citadel Theatre and The Arts Club Theatre); *Fiji* (Shatter Glass); *The Aliens* and *Nighthawk Rules* (What It Is Productions); *Wish You Were Here* and *Drat! The Cat!* (Plain Jane Theatre); *Featuring Loretta* and *Risk Everything* (Punctuate! Theatre); *The Conversion* (Kill Your Television Theatre); *Sequence* (Shadow Theatre); *Assassins* (Loose Ends Theatre); *Slack Tide* and *3...2...1* (Blarney Productions); *Love's Labour's Lost* (Studio Theatre); *Betrayal* (Broken Toys Theatre); *Brontë Burlesque* and *Hollywoodland Burlesque* (Send in the Girls Burlesque); and *Vigilante* (Catalyst Theatre). Select Film and Television credits: *Dark Match* (Dept. 9 Studios); *Damnation* (USA and Netflix); *Winter in Vale* (Hallmark); *Hell on Wheels* (AMC); and *Cold Pursuit* (StudioCanal).



**BRAYDON
DOWLER-
COLTMAN**
ARAMIS

Braydon is an Edmonton-born theatre artist. Select theatre credits include: *Little Shop of Horrors* (The Arts Club/Citadel Theatre); *Network* (Citadel Theatre/RMTC); *Pride & Prejudice*, *Jane Eyre*, *The Tempest*, *A Christmas Carol* (Citadel Theatre); *Burning Bluebeard* (Edmonton Actors Theatre); *Shakespeare's R&J* (Kill Your Television); *The Salon of the Talking Turk* (Teatro); *Fortune Falls* (Catalyst Theatre/ATP). Training: University of Alberta; Citadel/Banff Centre; Frantic Assembly.



DANIEL FONG D'ARTAGNAN

Daniel Fong is a mixed-race actor, singer and voiceover performer born and raised in Calgary, Alberta. He is proud to be a guest of the long tradition of storytelling in the Treaty 6 region of Alberta and hopes to continue lifting up and creating art with the communities he loves. Daniel was the recipient of the 2020 Stephen Hair Emerging Artist Award and his select stage credits include: *Forgiveness* (The Arts Club/Theatre Calgary); *A Christmas Carol* (Theatre Calgary); *Romeo & Juliet* (Bard on the Beach); *Joseph and the Amazing Technicolour Dreamcoat*, *The Skin of Our Teeth* (Rosebud Theatre); *US* (The Globe); *Alberta Kitchen Party*, *The Lion The Witch And The Wardrobe*, *Fortune Falls*, *The Circle* (ATP). He dedicates this show to his mother who confiscated all his swords as a child and to his incredible wife Nadia!



ALEXANDRA LAINFIESTA

QUEEN ANNE,
KITTY, ENSEMBLE

Alexandra is a Guatemalan actor, playwright and emerging director. Previous Theatre credits include: *As You Like It* (Bard On The Beach/ Shakespeare Theatre Co./Theatre Calgary); *Clean/Espejos* (Newworld Theatre); *The Miser* (Stratford Festival); *Tonic for Desperate Times* (Theatre Gargantua); *Anywhere But Here* (Electric Theatre); *Henry VIII* (Stratford Festival); *Napoli Milionaria!* (Stratford Festival); *Comedy of Errors* (Stratford Festival); *West Side Story* (Theatre Under The Stars). Writing credits: *Ábreme* (Shortfilm, Strange Company Productions); *Bella Luz* (Play, Arts Club Silver Commission); *Mimi on the Beach* (Theaturtle). A Canadian College of Performing Arts and Studio 58 graduate.



FELIX LEBLANC

LORD BUCKINGHAM,
ENSEMBLE

Felix is an actor, singer, and musician making his Citadel debut. Previous credits include: *Million Dollar Quartet*, *Dolly Parton's Christmas Carol*, *Masterclass* (Arts Club); *Flush* (Théâtre Français de Toronto); *Anne of Green Gables* (Gateway Theatre); *Elf: The Musical*, *Fiddler on the Roof* (Persephone Theatre); *39 Steps*, *Lumberjacks in Love* (Chemainus Theatre); *Bright Star* (Rosebud Theatre); *Mamma Mia!* (Globe Theatre); *Mary Poppins* (Rubarb Theatre); *Tent Meeting*, *Chickens* (Station Arts Theatre Centre); *Diamond Tooth Gerties* (Dynamite Stage Productions). He is a graduate of The Canadian College of Performing Arts. Love you H.



PAUL-FORD MANGUELLE

ENSEMBLE

**UNDERSTUDY: PORTHOS,
D'ARTAGNAN, LORD BUCKINGHAM**

Paul-ford Manguelle is a Canadian, French and English-speaking actor of Cameroonian origin. A newcomer to the scene, his most notable theatre credit includes: his performance as Miles in the Shadow Theatre's production of *The Drawer Boy*; as multiple characters such as Theo, the vault the breaker, Officer Al Winslow, Argyle, the rapping limo driver and Mary, the African secretary in The Grindstone Theatre's Christmas adaptation, *Die Harsh*. He also played Mitch in The Grindstone's 2023 production of *The 25th Annual Putnam Spelling Bee*. Paul-Ford is also a local filmmaker, producer, and director. He's a winner of the Local Heroes Short Film Festival and the Edmonton Short Film Festival. He's excited to continue to perform on stage and screen.



DARREN MARTENS ATHOS

Darren is an established theatre, film/tv, voiceover actor and fight director. Recent credits include: *Beautiful: The Carole King Musical* (RMTC/Segal Centre); *The Three Musketeers*, *Miss Bennet: Christmas at Pemberley* (RMTC); *Twelfth Night* (SIR); *Cinderella*, *Little Shop of Horrors*, *Beauty and the Beast* (Rainbow Stage); *Another Way Home* (WJT); *A Little Night Music* (Dry Cold); *Reefer Madness*, *Avenue Q* (WST); *Danny and the Deep Blue Sea* (The Keep Theatre). Fight Director credits: *The Secret to Good Tea*, *New* (RMTC); *Volare* (PTE). Darren dedicates this performance to his late father, Gary.



**JADE V.
ROBINSON**
CONSTANCE BONACIEUX,
ENSEMBLE

UNDERSTUDY:
QUEEN ANNE/KITTY

Jade is a mixed-race artist from amiskwacîwâskahikan (Edmonton) who is thrilled to return to the Citadel after performing in *A Christmas Carol* over a decade ago. She received her BFA in Acting from the California Institute of the Arts and is a National Gold Medalist for Speech Arts & Drama Performance. Select credits include: *Smoke* (Tiny Bear Jaws); *Unsung* (Workshop West Playwrights' Theatre); *Monkey King* (Enrichment Works); Film & TV: *This Too Shall Pass*, *Last Stop Video Rentals*, *Abracadavers*. Jade thanks her parents and Zach for supporting her and fueling her with snacks.



GARETT ROSS

M BONACIEUX,
ENSEMBLE

UNDERSTUDY:
ROCHEFORT/INNKEEPER

Garrett Ross is a graduate of the theatre programs at the University of Alberta and Grant MacEwan. Previous credits include: *The Sound of Music* (Citadel Theatre & Royal Manitoba Theatre Centre); *Pride and Prejudice*, *Jane Eyre*, *Shakespeare in Love*, *Peter and the Starcatcher*, *Hamlet*, *Romeo and Juliet* (The Citadel Theatre); *Fever-Land*, *I Heard About Your Murder* (Teatro La Quindicina); *Nevermore*, *The Soul Collector*, *Vigilante* (Catalyst Theatre); *Sherlock Holmes and the Raven's Curse* (Vertigo Theatre); *Liberation Days* (Theatre Calgary); *Jack Goes Boating* (Sage Theatre); *Outside Mullingar*, *The Best Brothers* (Shadow Theatre); *Chicago*, *Hairspray*, *Sheer Madness* (Mayfield Dinner Theatre).



FARREN TIMOTEO

KING LOUIS,
PLANCHET,
ENSEMBLE

Farren's acting credits include: *Jersey Boys*, *The Fiancée*, *As You Like It*, *Shakespeare in Love*, *Peter and the Starcatcher* and *Monty Python's Spamalot* (Citadel Theatre); *The Light in the Piazza* (Theatre Calgary); *Coriolanus* (Freewill Shakespeare Festival); *A Grand Time in the Rapids*, *Far Away and Long A-Gogo* (Teatro Live!); *Forever Plaid* (Mayfield Dinner Theatre); and *Made in Italy*, which he has been touring across Canada since 2016. Farren is also the Artistic Director of Alberta Musical Theatre Company. He has received a Jessie Richardson Award for his performance in *Made in Italy* and four Elizabeth Sterling Haynes Awards, two of which were for his performances in *Spamalot* and *Made in Italy* at The Citadel. In 2018, he was the recipient of a Broadwayworld.com Award for his performance in *Forever Plaid*. In 2015, Farren was included in Avenue Magazine's prestigious list of Edmonton's Top 40 Under 40, in recognition of his artistic contributions to the city.



**JOHN
ULLYATT**
ROCHEFORT,
INNKEEPER,
ENSEMBLE

Recently, John appeared as Scrooge in *A Christmas Carol* and *Little Shop of Horrors* (Arts Club/Citadel), and *Sexual Misconduct of the Middle Classes* (Theatre Network), and performed in the Spiegel tent at K-Days with Firefly Theatre. John is very familiar to The Citadel Theatre. Favourites include: *Matilda* (RMTC/Citadel/Arts Club); *Beauty and the Beast* (Citadel/Theatre Calgary); *Cabaret*, *The Pillowman*, *Rocky Horror Show*, and *Death of a Salesman* (Citadel). He has worked across the country in many theatres from The Segal Centre in Montreal to The Belfry Theatre in Victoria.



ANITA WITTENBERG

ENSEMBLE

**UNDERSTUDY: CARDINAL RICHELIEU,
MME DE TREVILLE/ABBESS,
MILADY DE WINTER**

Based in Vancouver, the unceded territory of the Musqueam, Squamish and Tsleil-Waututh nations, Anita is delighted to make her Citadel debut. She has enjoyed a long and varied career as an actor across Canada and the USA. Recent credits: *Romeo and Juliet* (Bard on the Beach); *White Noise* (The Firehall Theatre/ Savage Society); *Mother of the Maid* (Pacific Theatre); *The Curious Incident of the Dog in the Nighttime* (Arts Club Theatre). Recent Film and TV: *Longlegs*, *Wilderness*, *Riverdale*, *Grease: Rise of the Pink Ladies*, *The Good Doctor*.



MORGAN YAMADA

JUSSAC, BRADDOCK,
FELTON, ENSEMBLE,
INTIMACY CAPTAIN

UNDERSTUDY:
CONSTANCE, ARAMIS

Morgan works as an actor, fight director, arts educator and Co-Artistic Producer of Azimuth Theatre. Her focus lies in new work and physical-based theatre. With the Citadel, projects include: *Prison Dancer*, *Pride and Prejudice*, *Clue*, *The Fiancée* and *9 to 5: The Musical* as a Fight Director; *Almost a Full Moon* as an Assistant Director; *Pride and Prejudice*, *Delay - The Horizon Lab* and *Peter and the Starcatcher* as an actor. For more on her past, present, and upcoming work, check out her website: morganyamada.com



BAHAREH YARAGHI

MILADY DE WINTER,
ENSEMBLE

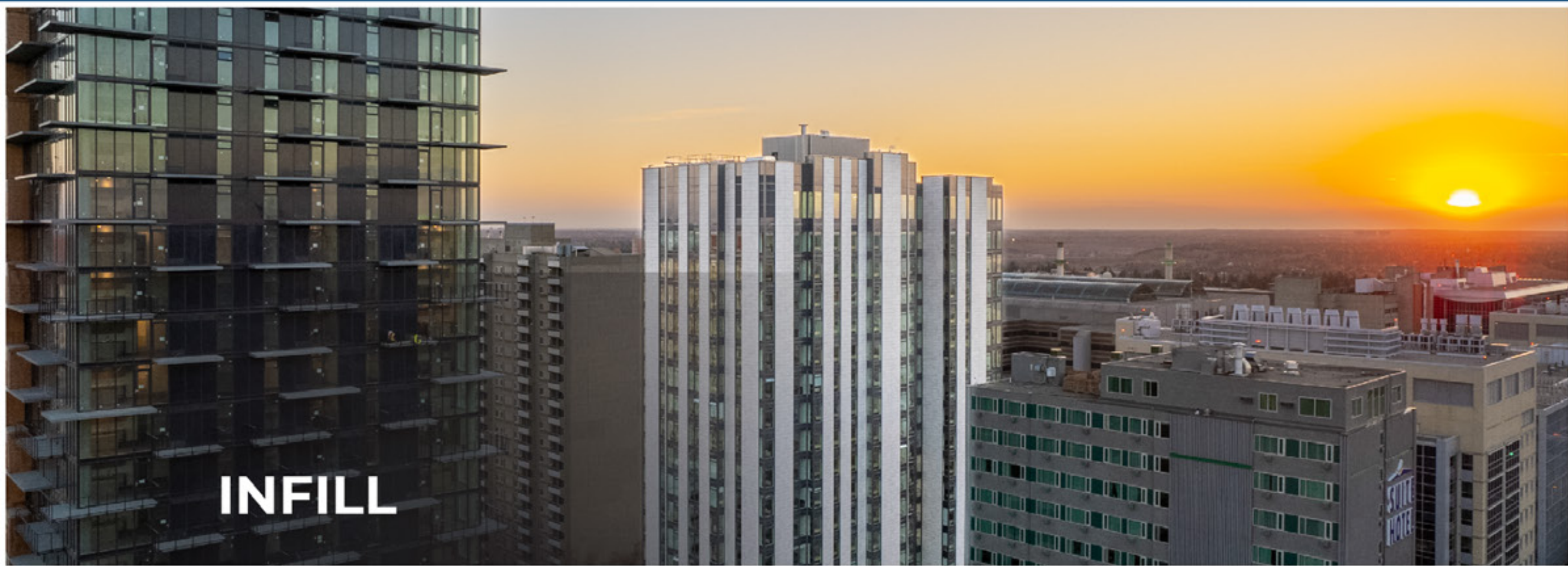
Bahareh has recently wrapped Steve Martin's comedy, *Meteor Shower*, at Theatre Calgary. Her work has taken her across the country from the Shaw Festival, the Stratford Festival, Mirvish, Citadel, Theatre Calgary, Tarragon Theatre, Factory Theatre, Buddies in Bad Times, Théâtre Français de Toronto, Arts Club, Royal MTC, Nightwood, Canadian Stage, Theatre Smash, ARC, Why Not Theatre, YPT, and others. Recent Film/TV: *Good Sam*, *What We Do in the Shadows*, *Kim's Convenience*, *Dear David*, and *Inedia*. Bahareh is a six-time Dora award nominee (Individual/Ensemble) and a two-time Sterling award nominee (Individual/Ensemble).

MACLAB

Development Group



RESIDENTIAL



INFILL



COMMERCIAL

Bringing passion, purpose, and uncompromising quality to every one of our developments.
Because this is where we live.

maclabdevelopment.com

 [maclabdevelopmentgroup](https://www.instagram.com/maclabdevelopmentgroup)

 [Maclab Development Group](https://www.linkedin.com/company/maclab-development-group)

The Arts Club Theatre Company is proud to partner with the Citadel Theatre for this production of *The Three Musketeers.*

Now in its 60th anniversary season, the Arts Club is the largest not-for-profit year-round theatre company in Canada. It is the principal gathering place for the theatrical arts in British Columbia. Comprising three unique venues across Vancouver, the Arts Club welcomes more than a quarter million guests annually, tours provincially and nationally, and engages students and artists alike through educational and professional programs.

Above all, the Arts Club is dedicated to the advancement of local artists telling stories from around the globe and, in particular, those of our region. From this, we believe that culture expands, an understanding of differences is nurtured, and art bursts forth.

60
YEARS

ARTS CLUB



CATHERINE BUSH

PLAYWRIGHT

Catherine Bush lives in Abingdon, VA where she is Barter Theatre's playwright-in-residence. Her plays for young audiences include *Cry Wolf!*, *Sleeping Beauty*, *Rapunzel*, *Frosty*, *The Scarlet Letter*, *The Adventures of Tom Sawyer*, *My Imaginary Pirate*, *The Red Badge of Courage*, *The Princess and the Pea*, *The Call of the Wild*, *Aesop's Fables*, *Santa Claus is Coming to Town*, *Mother Goose: The Musical*, *The Legend of Sleepy Hollow*, *Antigone*, *Jingle All the Way*, *Great Expectations*, *Anne of Green Gables*, *Old Turtle and the Broken Truth*, *Robin Hood*, *Clementine: the Musical*, *Tarzan*, and *The Little Mermaid*. Other produced plays include: *The Executioner's Sons*, *unhINGEd*, *Dracula*, *The Frankenstein Summer*, *A Jarful of Fireflies*, and *Just a Kiss* (a finalist for the 2007 Steinberg Award). Catherine has also written over twenty-five plays for the Barter Players, whose work serves the younger members of Barter's audience. Catherine is a proud member of Dramatists Guild. catherinebushplays.com



DARYL CLORAN DIRECTOR

Daryl is the Artistic Director of the Citadel. He has directed internationally in countries such as South Africa and Bosnia and Herzegovina, and across Canada, including: Shaw Festival, National Arts Centre, Neptune (Halifax), Arts Club (Vancouver) and Canadian Stage (Toronto). For the Citadel, Daryl has recently directed: *Almost a Full Moon*, *Network*, *Jane Eyre*, *The Fiancée*, *Shakespeare in Love*, and *Matilda*. Daryl's award-winning, Beatles-infused adaptation of *As You Like It* has played at the Citadel, Bard on the Beach (Vancouver), RMTC (Winnipeg), Chicago Shakespeare Theater, Milwaukee Rep, Shakespeare Theater Company (Washington, DC) and Theatre Calgary. Up next Daryl will direct the Citadel's production of *A Streetcar Named Desire*.



CORY SINCENNES

SET & PROPS AND
COSTUME DESIGNER

Cory is an award-winning designer, currently residing in Charlottetown, PEI. His designs have received both national and international recognition having worked throughout Canada, Europe and Russia. He holds a MFA in Theatre Design from the University of Alberta. Recent Work: *Gypsy; Prince Caspian, Damn Yankees* (Shaw Festival); *Anne of Green Gables, Evangeline, Jesus Christ Superstar, Mamma Mia!* (Charlottetown Festival); *Shakespeare in Love, Matilda, Romeo and Juliet, Spamalot* (Citadel Theatre); *The Secret Garden, The Louder We Get, Billy Elliot, Bad Jews, Liberation Days* (Theatre Calgary); *Next to Normal, Mary Poppins, Crazy For You* (Theatre Calgary/Citadel Theatre). corysincennes.com



**SOPHIE
TANG**
LIGHTING
DESIGNER

Sophie Tang is a lighting and set designer working in Theatre, Opera and Dance. She is a Jessie Award Winner and Nominee, as well as an Ovation Award Nominee. She has worked with companies including Stratford Festival, Shaw Festival, Electric Company Theatre, Arts Club Theatre Company, Bard on the Beach, Vancouver Opera, Theatre Replacement, Vancouver Asian Canadian Theatre and so on. Recent credits: *Choir Boy* (Canadian Stage and Arts Club Theatre Company); *The Apple Cart* (Shaw Festival); *Henry V* (Bard on the Beach); *Pearl Fisher*, *A Mid Summer Night's Dream* (Vancouver Opera). Portfolio website: sophieyufeitang.com



JONATHAN LEWIS

SOUND DESIGNER

Jonathan is a musician, composer, and sound designer from Mexico City, originally from Vancouver. He is very happy to return to The Citadel after his previous engagement creating the score for *Jane Eyre*. Previous credits include designs and compositions for companies such as Theatre Calgary, Alberta Theatre Projects, Vertigo Theatre, Western Canada Theatre, The Shakespeare Company, Quest Theatre, The Old Trout Puppet Workshop, The Green Fools, One Yellow Rabbit, and more. lewisviolin.com



**JONATHAN
HAWLEY
PURVIS**
FIGHT
DIRECTOR

CITADEL: *Little Shop of Horrors, As You Like It, Sweat, Silver Arrow, Shakespeare In Love, Crazy for You, West Side Story, One Man Two Guvnors, Romeo & Juliet, Spamalot, Midsummer Night's Dream, Three Musketeers.*
OTHER THEATRES: *As You Like It, Henry V, Julius Caesar, Macbeth, Taming of the Shrew, Shakespeare in Love (BARD on the Beach); Antony & Cleopatra, Three Musketeers, Caesar, Much Ado (St. Lawrence); Inferno (Firefly Theatre); I Am For You (Concrete Theatre); Singin' in the Rain (Chemainus); Little Shop of Horrors (TIP); Beauty & the Beast (STC); Dirty Rotten Scoundrels (Theatre Calgary); Forbidden Phoenix (Citadel/YPT/MTYP).* **FILM/TV:** *The Last of Us, Faultline, Motherland, When Calls the Heart, Blue Book, Fortunate Son, Northlander.*
jonathanpurvis.com



**ANNA
KUMAN**
CHOREOGRAPHER &
INTIMACY DIRECTOR

Originally from Vancouver, Anna works as a choreographer, director, intimacy director, and is a full-time faculty member at MacEwan University's Music Theatre BFA Program. Previous credits include: *Matilda* (Citadel/ RMTTC/ Arts Club); *[title of show]* (MacEwan); *Godspell*, *Mom's the Word: Nest 1/2 Empty*, *Mom's the Word: Talkin' Turkey* (Arts Club); *CIRCLE GAME: Reimagining the Music Joni Mitchell* (Firehall/ Persephone); *American Idiot*, *Jesus Christ Superstar*, *Spring Awakening*, *Rocky Horror Show* (FCP); *A Midsummer Night's Dream* (Vancouver Opera); Rio 2016 Paralympic Opening Ceremony; Expo 2020 Dubai. Special thanks to her husband Andy, son Enzo, and to Daryl for the opportunity to return to the Citadel. annakuman.com



MADISON HENRY

STAGE MANAGER

Maddy (she/her) is a multi-discipline Stage Manager based in Edmonton, AB. Endless thanks to Daryl for his trust in her to lead this team, and to Frances, Tracey, and Charlotte for their support, skill, and teamwork. If there were four musketeers, it would be us. Select credits include: *The Importance of Being Earnest*, *Deafy*, *Jane Eyre* (Citadel Theatre); *The Sound of Music*, *Network* (Citadel Theatre/Royal MTC); *Gaslight* (Chemainus); *Hey Viola!* (Charlottetown Festival); *The Wizard of Oz*, *Chelsea Hotel*, *The Sound of Music*, *A Christmas Carol* (Western Canada Theatre); *The New Canadian Curling Club*, *The Buddy Holly Story* (Thousand Islands Playhouse).



**FRANCES
BUNDY**
ASSISTANT
STAGE MANAGER

Frances is a stage manager based in Edmonton and is psyched to be back at the Citadel with some of her best friends after spending the last several months back home in Toronto. Select credits include: *Pride and Prejudice*, *Network*, *Clue*, *A Christmas Carol* (Citadel); *La Bête* (Talk is Free); *The Invisible: Agents of Ungentlemanly Warfare* (The Grand/Catalyst); *Vigilante in Concert* (Catalyst); *Kinky Boots* (Drayton); *The Play's The Thing*, *Dead In The Water* (TheatreYes); *Hacking and Slashing*, *Lemon, I*, *Animal*, *Monster* (ReadyGo Theatre). She would like to thank her parents for her passion for art, Erik for being her rock every day and Maddy for being so funny.



**TRACEY
BYRNE**
ASSISTANT
STAGE MANAGER

Tracey is delighted to be a part of the Citadel's production of *The Three Musketeers*. She is honored to be a part of this brilliant cast and creative team. Previous credits include: *Vimy, Cookin' at the Cookery, Frieda K, Penelopiad, Rocky Horror Picture Show, God of Carnage, Romeo and Juliet, Other Desert Cities* (Citadel Theatre); *Sexual Misconduct of the Middle Classes, The Innocence of Trees, The Gravitational Pull of Bernice Trimble, Armstrong's War, and Woman in Black* (Theatre Network). Tracey would like to thank her husband John for his love and support.



CHARLOTTE BRAID

APPRENTICE
STAGE MANAGER

Charlotte Braid (she/her) is an emerging Stage Manager in Alberta. She is thrilled to be returning to the Citadel for this production. She is a graduate of the University of Alberta's BFA Stage Management program. Recent credits include: *Meteor Shower* (Theatre Calgary); *Romeo and Juliet, Twelfth Night* (Freewill Shakespeare); *Trouble In Mind* (Citadel Theatre); *Honk! The Musical, Peter and the Starcatcher* (Storybook Theatre); *Home for the Holidays* (Lunchbox Theatre). She would like to thank her family and friends for their continued love and support! Enjoy the show!

SPOTLIGHT

2023/24 PLAYWRIGHTS LAB



Collin Doyle



Sue Goberdhan



Katherine Koller



James Odin Wade

These fantastic playwrights are each working throughout this season on a brand-new play adaptation aimed at large scale production. Curious to see what they are cooking up? Come check out readings of their work in progress at our upcoming Collider Festival.

COLLIDER FESTIVAL

Exploring New Plays for Large Spaces

June 1-2, 2024 • Zeidler Hall

STUDENTS CLUB

PRESENTED BY canada  life™

Young people are integral to the artistic fabric of the Citadel Theatre, and we are committed to providing programs and initiatives that champion the development of their artistic identities. Students Club offers a unique glimpse into the world of professional theatre to a wide range of local junior and senior high school students. Prior to select performances of each of our mainstage shows, students participate in a highly engaging, interactive presentation with one of our region's talented theatre artists. Following the performance students stay for an informative talkback with members of the production's cast and crew.



With lavish sets, hundreds of costume pieces and epic swordfights, our production of *The Three Musketeers* provides endless visual elements to enjoy. But with so many moving pieces, how does the audience know where to look? A sharp lighting design guides the audience's eye through the story, as our Students Club members learned in their pre-show workshop

with the Musketeers lighting designer, Sophie Tang! Sophie's designs have been seen all across Canada on plays, musicals, and operas. Her Students Club session illuminated just some of the techniques and tricks that she used to light up this production!

For more information on Students Club, or to become a part of the program, please contact

groupbookings@citadeltheatre.com

celebrate all voices, all bodies, and all experiences.

This is a living statement that has been crafted by Citadel Theatre's Equity, Diversity & Inclusion Committee. If you have any questions, please contact:

EDICOMMITTEE@CITADELTHEATRE.COM

VISION STATEMENT

The Citadel Theatre believes in being Inclusive, Innovative, and International in our programming and practices

INCLUSIVE We celebrate, welcome and share stories with the many different communities that make up Edmonton. Our stages come alive with different voices and cultures. We strive to make our productions and our facilities inclusive and accessible; we believe the Citadel is a place where everyone belongs.

INNOVATIVE Our programming will celebrate new work, new performance styles and productions that experiment with dramatic form. We will develop large-scale new work by Edmontonian, Canadian and international playwrights. We will create collisions between different art forms, and present work that includes dance, music and digital storytelling.

INTERNATIONAL We will present and collaborate with exciting theatre-makers from around the world, as well as taking the fantastic work of the Citadel to audiences everywhere.

MESSAGES FROM OUR COMMUNITY INVESTORS



Capital Power

Capital Power is a proud Season Sponsor of the Citadel Theatre – since 2013! The Citadel is a pillar in our artistic community, and a long-time cultural icon in our city. Every season, they raise the curtain on world class productions, bringing thought provoking, brilliantly imaginative stories to life, creatively contributing to Edmonton's cultural heritage, diversity, and character.

– Gerard Merkosky, VP, Strategic Finance and Analysis and Citadel Theatre Board of Directors Member



Almost 60 years since it was founded, The Citadel Theatre has grown to become one of North America's largest not-for-profit theatres. The Citadel, as it is affectionately called, has built a vibrant, inclusive community of artists in the Edmonton region, and fostered the creative voices and participation of a new generation of diverse artists and theatre lovers. EPCOR is proud to support the Citadel – the heart of our city's arts community and a source of joy and inspiration.

– Jennifer Addison, Senior Vice President, Sustainability, General Counsel & Corporate Secretary and Chair of The Citadel Theatre Board of Directors



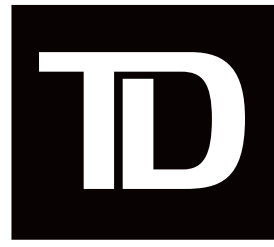
Qualico Properties proudly endorses our support for the Citadel Theatre. Beyond its cultural significance, the Citadel fosters community engagement and enriches the City of Edmonton's social fabric. By investing in the arts, we contribute to Edmonton's vibrancy and appeal, enhancing both quality of life and economic vitality. The Citadel's diverse programming resonates with our commitment to inclusivity and creativity, aligning seamlessly with our values of building better cities.

- Mike Saunders, Senior Vice President, Qualico Properties



Edmonton is deeply rooted in arts and culture, and our city is more captivating and vibrant because of it. At the epicenter of this is the Citadel Theatre, the heart of Edmonton's arts community. The Citadel connects us all through stories, music, and dance. It captures our imagination and celebrates diversity. Maclab Development Group and Second Street Fund are proud to continue our partnership and to support such a transformative, inclusive, and innovative arts program.

**– Bill Blais, President and CEO Maclab Development Group
& Cory Chisholm, President, Second Street Fund**



TD READY COMMITMENT

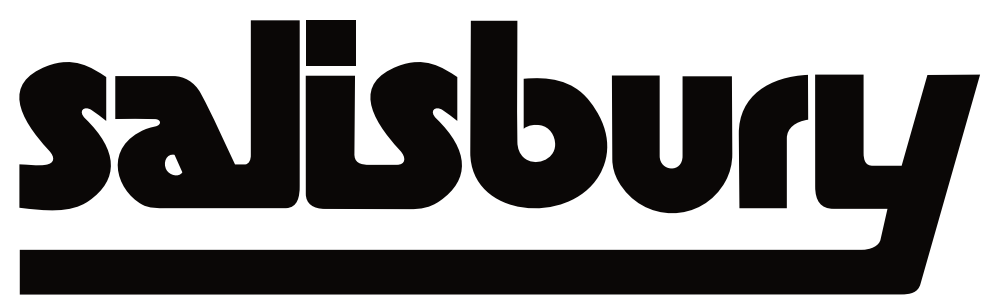
TD Bank Group is very proud to support the Citadel Theatre and their work to bring world-class arts performances to Edmonton. At TD, we believe the arts have the power to unite us and create a sense of belonging. Our global corporate citizenship platform, the TD Ready Commitment, is aimed at helping open doors to a more inclusive and sustainable tomorrow where everyone feels connected to their community. We're committed to bringing people together, so everyone can succeed in a changing world. On behalf of everyone at TD, I hope you enjoy *The Three Musketeers!* – **Ali Moser, District Vice President, Edmonton East, TD Bank Group**



At Canada Life, we believe art has the power to open our minds to different experiences, challenges and cultures. We're proud to support the Citadel Theatre because their interactive and diverse art programs help uncover complex social issues, reflect diverse voices and inspire positive change. By encouraging education, inspiring creativity, and increasing accessibility, they're enriching the lives of our communities.



When communities come first, we all win. IG Wealth Management is proud to invest in Canadians by supporting communities from coast-to-coast. lg.ca/empoweryourtomorrow. There is so much more to a financial plan than investments. Let's discuss your options today and I'll show you how a real financial plan from IG Wealth Management fits every aspect of your life. You deserve more, let's talk today.



Salisbury proudly supports the Citadel Theatre to enrich our communities through

the power of the arts. As dedicated champions of growing joyful experiences and promoting wellness, we understand the profound impact that artistic expression can have on the well-being of individuals and society as a whole. By fostering creativity and bringing people together, the arts play a vital role in promoting holistic wellness. Together, we celebrate the joy and connection that art brings to our lives.



**RBC
Foundation™**

At RBC, we believe our purpose is to help clients thrive and communities prosper. We do

this with pride and passion alike, and with tremendous gratitude for the trust our customers and partners place in us. To support the arts is a privilege for our organization. Art — be it music, culture, performance or any other form — is a cornerstone of vibrant communities around the world. To us, an investment in the arts is an investment in Canadian culture and one of the most important ways we bring our purpose to life.



RECOGNIZING OUR PARTNERS

SEASON SPONSOR

Capital Power

PRESENTING SPONSORS



Pay What You Choose



Students Club



SIX



The Three Musketeers



School Matinees



RBC Horizon
Emerging Artist



Little Shop of Horrors



A Christmas Carol



Play Development

PRODUCTION SPONSORS



Little Shop of Horrors



The Sound Of Music

PERFORMANCE SPONSORS



The Sound Of Music

PROGRAM SPONSORS



Community Partner



Spotlight Program



Community Partner



Hospitality Sponsor

OFFICIAL SUPPLIERS



MEDIA SPONSORS



PREMIER SUPPORTERS

**THANK YOU TO OUR PARTNERS IN THE
CREATION OF THEATRE AT THE CITADEL:**

The Hole Family

The Eldon and Anne Foote Fund

Maclab Development Group

The John and Barbara Poole Family Fund

The Joseph H. Shoctor Fund

GOVERNMENT AND FOUNDATION FUNDERS

Edmonton



Alberta

Funded by the
Government
of Canada

Financé par le
gouvernement
du Canada

Canada



Canada Council
for the Arts

Conseil des Arts
du Canada



RBC
Foundation™

We acknowledge the support of the Canada Council for the Arts, which last year invested \$195 million to bring the arts to Canadians throughout the country.

Nous remercions le Conseil des arts du Canada de son soutien. L'an dernier, le Conseil a investi 195 millions de dollars pour mettre de l'art dans la vie des Canadiennes et des Canadiens de tout le pays.



DR. JOSEPH H. SHOCTOR, 1922 2001

EXECUTIVE PRODUCER AND FOUNDER
OF THE CITADEL THEATRE

JOE'S VISION

brought professional theatre to Edmonton

JOE'S DREAM

built the Citadel Theatre

JOE'S SPIRIT

continues to inspire the theatre we create today

JOE'S LEGACY

lives on through a generous gift to the Citadel
from his estate

HENRY HOLE, 1884 1954

On the Citadel's 30th Anniversary, a gift was made by the Company of Harry Hole, James F. Hole, Ralph K. Hole and Robert W. Hole on behalf of the Hole family — in honour of their late father, Henry Hole.

The Citadel Theatre is proud to honour Henry Hole's integrity, compassion and leadership in the dedication of this complex to his memory.

VOLUNTEERS

Zoe Afaganis
Hermione Ainsworth
Hasra Ali
Mackenzie Altheim
Johanna Andreoff
Judith Babcock
Luis Ballester
Karen Balon
Karin Banasch Vail
Shirley Bellrose
Coby Benoit
Shelley Benson
Erika Beyer
Bernie Bolton
Florence Borch
Ken Borch
Alan Burkin
Margot Byer
Patrick Caron
Dee Cartledge
Rob Cauti
Carmelle Cooper
Jack Diacon
Valerie Dyck
Lil Filewych
Brenda Fraser
Dan Germain
Bonita Gillespie
Betty Grudnizki
Julie Harvey
Jeff Haswell

Rosemarie Heaney
Brad Heller
Diane Helmers
Kristen Hennessey
Maria Hollinshead
Doug Hunter
Joan Johnston
Jodi Jones
Craig Jones
Joanne Kallal
Hanae Kiyooka
Robin Knight
Eva Kopecka
Arndt Kuethe
Janice Kuethe
Wendy Kurtz
Susan Lauridson
Sylvia Lee
Karen Lewis-Caron
Jim Linnen
Elizabeth Luchko
Rita MacDonald
Ross Machetchuk
Bob Matfin
Linda McMurdo
Donna McKay
Karen Miller
Janice Minamide
Bob Moore
Joan Murchie
Andrea Newman

Emmy Nunes
Linda Orlecki
William Parker
Susan Patenaude
Doug Racine
Leila Ragoonanan
Joan Redman
Barbara Reinhardt
Lori Ristoff
Cheryl Ritchie
Monica Robillard
Sukhjit Saimbhee
Susan Schroter
Angela Seery
Theresa Shea
James Smibert
Linda Smibert
Victoria Spang
Cinnamon Stacey
Deb Stack
Diane Trithardt
Christine Tupper
Lacey Untereiner
Brenda Voyce
Lisa Welshman
Talia West
Liz White-MacDonald
Catherine Wirt
Bonnie Connelly Wilson
Vanessa Wilson
Dave Wolkowski

Thank You
to all our volunteers!
You help us make the magic possible.

ANNUAL SUPPORT

THANK YOU! We extend our heartfelt thanks to all our donors, whose generosity plays a crucial role in ensuring our community has the opportunity to experience performing arts. Our donors have a profound and lasting impact on the quality, accessibility, and relevance of the Citadel's productions, facility, and educational offerings.

STEWARD

Gifts of \$10,000+

The Estate of
Marguerite Bowen
Bruce Hagstrom
Dr. Rowland & Muriel
Haryett Fund
Ada Hole
Al & Fran Olson
Kayla Shoctor
Marshall & Debby Shoctor
John & Dianne Storey
Family Foundation

ARTISTIC DIRECTOR

Gifts of \$5000-\$9999

Anonymous
ARC Business Solutions
David & Janet Bentley
Family Fund
Dr. Lorraine Bray & Jim
Carter OC
Cormack Ede Family Fund
M & J Dal Bello
Randy & Wendy Dupree
John Green
Brent & Deborah Hesje
Marc de La Bruyère &
Stacy Schiff
Marie Montgomery
The Polar Foundation
The Watson Family
Weir Family Fund

DIRECTOR

Gifts of \$2,500 - \$4,999

Dr. Ghalib Ahmed &
Derek Wicks
Bruce & Carol Bentley
Barbara Burrows
James Casey & Gail Verity
Marguerite & Zbigniew
Chrzanowski
Sandra Anne Haskins
Gail & Andrew Jarema
Wolfgang & Beth Kaminski
Allen & Patti Kramer
Arliss Miller
Dr Susan & Ove Minsos
Mitchell Family Fund
David Mundy
Esther Ondrack
Nan & Peter Poole
Sol & Marilyn Rolingher
Aroon Sequeira
David Verbicky
Sam Withanachchi
Ralph Young
Leon & Vonnie L. Zupan

STAR

Gifts of \$1000-\$2499

Anonymous
The Honourable Darlene
Acton
Jennifer Addison
Dagny & Graeme Alston
Andrekson Family Fund

Diana & Laurence
Andriashek
Roger & Alison Babichuk
Jeff Boadway
Judith Cosco
Andy & Marianne Elder
In Memory of Carol
Engelking
Penny Erickson
Todd & Judy Gilchrist
Gaie Goin
Mira Green
Dave & Janet Hancock
Christopher Head
J.D. Hole
John Blake's Wigs &
Facial Hair Inc.
Norman & Valerie
Kneteman
Ken & Jennifer Kouri
Donna Krucik
Theresa Lema
Robert & Dawn Lemke
Sandra & Jim Lockhart
Lauren Lucid
Peter & Dorothea
MacDonnell Fund
Linda & Kim MacKenzie
Family Fund
Shannon Marchand &
Roisin McCabe
Cody Mathieson
D Scott Mathieson
Douglas & Claire
McConnell

Laurie & Dave McInnes
Gerard & Lynette Merkosky
Lisa Miller & Farrel Shadlyn
Lewis & Lindsay Nakatsui
Armand & Pearl Nielsen
Ted & Debbie Power
Louise Severin, Linda
Pratch, Darren Pratch,
Suzanne Reilly, & Simone
Rudge
Francis Price & Marguerite
Trussler
Jonathan & Victoria Reid
Richard Remund
Alan Rose
Grace & Arnold Rumbold
Dale & Chris Sheard
Kim & Don Wheaton

LEAD

Gifts of \$500-\$999

Allaine Fund
Barbara Blackley
Rita Burns
Chris & Leah Burrows
Frank Calder
Janet & Kevin Campbell
Elizabeth Cherry
Ruth Collins-Nakai
Karen Cox
Margaret Dorey
Brad & Elaine Doucette
Michele Eickholt & Lee
Green
Cathy G. Flood
Nancy Heule
Bill & Jana Holden
Brenda & John Inglis
Linda & Siegfried Kowand
Steven & Kathy Lavery
Christine Lefebvre
Mary Lister
Stephen & Catherine
Madsen
Brad Mastaler
Alan & Patricia McGeachy

Gordon & Agneta
McKenzie
Cliff & Connie Otto
Helen Otto
Vital & Colleen Ouellette
Jean & Edward Posyniak
Barb J. Prodor
Andrew & Carol Raczynski
Barbara Redmond-Ellehoj
Constance Scarlett
Gerry & Barbara Sinn
Brune Sinneave
Delores Stefaniszyn
Allison Theman
Maggie R. Thompson
Michael & Kathleen Tomy
Shannon van Soest
Doug & Dorothy Warren
Susan Wright
Sarah Wylie

SUPPORTING

Gifts of \$100-\$499

9 Anonymous
Edie & Greg Alcorn
Sandra M. Anderson
Gail Andrew
James Archibald & Heidi
Christoph
Scott Arndt
Maurice & Annette Bastide
Cecilia Baxter
Lola Baydala
Cara Bedford
Fran Belzberg, In Memory
of Kayla Shoctor
Andrew & Susan
Benkovich
Richard & Connie Biamonte
Sue & Greg Bird
Lucille Birkett & Randy
Busby
Stan Bissell
Bev Blasetti
Julia Boberg

Angie Bogner
Ed & Marianne Bouthillier
Michael & Shayna Bowling
Kathleen Bowman
Teresa & Robyn Boyko
E Ross Bradley
Dr. Beverley & John
Brennan
Courtney Brin
Ainsley Brown
Linda Brownlee
Laura Bryant
Denise I. Bryden
Janet Buckmaster
Kevin & Sarah Burghardt
Susan Butler
Donna Campbell
Mary K. Campenot
Lynda M. Cantell
James & Joan Carlson
Raymond Caron
Brian Charette
Sharleen M. Chevraux
Peni Christopher
Brent Christopherson
Gordon & Janet Clanachan
Shirley Cockburn
Kim & Rick Craig
Robert Crosbie
Patrick & Luxie Crowe
Elizabeth Cruickshank
Jennifer Dailey-O'Cain
Chris Danchuk
Ruth Daney
Karen Davison
Lisa Dayanandan
Christine Anne Dechoretz
Marcella DeJong
Jim Delaney
Sherry DeSoete
Eva Dezse
Jill C Doiron
Karen & John Donahoe
Melissa Doucette

Gail Drechsler	Douglas & Diane Johnson	Gail Moores
Carol Dreger	Audra & Kevin Jones	Gordon & Cathy Moorhouse
Jim & Pauline Drinkwater	Erwin Kadach	Chantal Moreau
Julie-Ann May Dron	Brian & Ida Kaliel	Joan Morrison
Margaret Dudley	Jatinder & Mala Kalra	Leanne M. Nadwidny
Sylvia Duffus	Bob Kamp	Craig Neuman & Leita Seiver
Ian & Lynne Duncan	Dorothy Keeler	North & Company LLP
Douglas Bruce DuVal	Paula Kelly	Jennifer J Oakes
Karen Dyberg	Sheilah Kelly	Penny Omell
Joy Edwards	Janice Kent	David & Paula Onderwater
Harold English	Monte Koenig	Ben & Micha Oostenbrink
Gail Faulkner	Sylvia A. Kother	James & Beverley Orioux
Joe & Pat Fenrich	Barbara Krause	Mieko Ouchi
Martin & Peggi Ferguson- Pell	Jennifer Kwan	Kathy Packford
Lois Field	James & Maggie Laing	Stacey & Chris Padbury
Lil Filewych	Joy & David Lardner	Marian Palahniuk
Tim Fort	Ruth & George Lauf	Bhupen & Lata Parekh
JP Fournier	Don & Gwen Lawrence	Carol Pawlenchuk
David France & Marion Haggarty-France	Gordon T. Lea	Teresa Pawliw
Friends of Jezebel	Robert & Audrey Lee	Leslie & Rick Penny
Marla Gordulic	Sigmund Lee	Catherine & Richard Perry
Susan Green & Stewart Roth	Valda Levin	Carlie & Greg Persson
Paul V. Greenwood	Cathy Lord	Linda Peter
Royston Greenwood	Chris & Cecilie Lord	Marija Pipunic
Audrey Groeneveld	Liz Luchko	Tiffany Plamondon
Ali Grotkowski	Christie Lutsiak	Elaine Pollard
Kathy Gynane	Victoria Anne Luxton	Ron Pollock
Catherine & James Hammond	James I. MacSween	Heather Pontikes
Julie Harvey	Jo Anne Mahood	Paul & Leslie Precht
Ronald & Marcie-Lynne Haukenfrers	Linda Maki	Susan Priestner
Lois & Chan Hawkins	Glynis & Doug Maley	Moira Proskin
Tatsuyuki & Doris Hayashi	Diane Marsh	Diana Purdy
John & Margot Henderson	Neil & Pamela Martin	Paul Puszczak
Patsy Ho	Wendy Mathewson	Marilyn & Michael Quaedvlieg
Scott & Rebecca Horton	Donna Maxwell	Jeff Ramage
Kelvin & Carol Hussey	Ian & Linda McConnan	Corrie Redl
Kimberly Huynh	Roxanne McLean	Joan Redman
Paula Jamison	Shane McMillan	Donna Rempel
Louise Jensen	Cheryl McPherson	Philip & Heather Renaud
Ronald J. Jewitt	Dr. Bubbles & Evelyn Meer	Garry & Donna Rentz
	Pamela & Dennis Melnyk	Mary Ritchie
	Laurie Mereu	Andrea Roche
	Andrea B Moen	
	Shona Monforton	

Dean & Jan Rokosh	Marie Slusar	Alana Mae Tucker
Beverley J. Roy	Lynn Smarsh	Lorene Turner
Kenneth L. Roy	Jennifer Smid	Gary Unger
Tetyana Ryabets-Zuk	Fern Snart	Eric van Walsum
Orla Ryan	Steven & Connie Snyder	Marie-Louise Vieira
Mitch & Maryann Sabourin	Dale Somerville	Chris Vilcsak
Susan V Sadler	Wanda & Tracy Sorotsky	Lori Anne Wall
Kim Sanderson	Tim Spelliscy	Scott Wallace
Michele Sawatzky	Keith & Bev Spencer	Douglas Webster
Roland & Dolores Schech	Terri & Michael Spotowski	Michele Wedemire
Stan & Deb Schellenberger	Lawrence Staples	Robert & Ann Weir
Culley Schweger Bell & Steven Bell	Jean & Gerry Staring Fund	In Memory of Allen Weiss
Marianne Scott	Graham J Steel	June Weldon
Nelson Scott	Martha Steenstrup	Eva Willox
Shauna J. Scott	Dave & Gail Stolee	Willis Winter
Dawna Scrivens	Bill Stoley	Daniel & Tonya Wolfe
Nancy Scrymgeour	Ben & Laraine Strafford	Lynn Wolff
Rita Sequeira	Caroline Stuart	Jeff Wright
Jack Seto & Audrey Lowe	Jenny Stuart	Peter & Joan Wright
Vivian Simmonds	Merle & Neil Taylor	Keith Wylie
Phil & Tracy Simons	S Bruce Thomson	Theresa Marie Wynn
Sheila Sirdar	Tim Toohey	Randall & Nancy Yatscoff
Bartlomiej Skrzypczak	Mary-Ann & Andy Trachimowich	Betty Young
Yvonne Slemko	Jean & Jim Triscott	Diane Zinyk
		Lorna Zucchet

To learn more about donating to the Citadel Theatre, please visit www.citadeltheatre.com or contact Ben Oostenbrink at fundraising@citadeltheatre.com. Charitable BN 11922 7387 RR0001. Every effort has been made to ensure the accuracy of our donor information. Listing includes donations of \$100 or more. If we have made an error or omission, please contact us at fundraising@citadeltheatre.com.

CITADEL TEAM

BOARD OF GOVERNORS

Solomon Rolinger
K.C. Chair

Marshall Shocter
K.C. Past Chair

Bruce Bentley
Treasurer

Tom Redl
Secretary

Wendy Dupree
Ex Officio

Jacqueline Charlesworth

Arliss Miller

Aroon Sequeira

Chris Sheard

Dr. Robert Westbury

Sheila Witwicky

Ralph Young

BOARD OF DIRECTORS

Jennifer Addison
Chair

Constance Scarlett
Vice Chair

Roger Babichuk
Treasurer

Wanda Costen

Derriquer DeGagné

Amy Gaucher

Kaitlyn Hunder

Marcie Kiziak

Joy Lardner

Shannon Marchand

Joshua McIntosh

Gerard Merkosky

Lindsay Rainbow

HONORARY DIRECTORS

Jack N. Agrios

Jane Batty

Ken Bautista

Joanne Berger

Christine Bishop

Dan Block

Guy Bridgeman

Frank Calder

Gary G. Campbell

Betty Carlson

Donald A. Carlson

Marilyn Cohen

Reg Copithorne

Len Dolgoy

Allison Edwards

Dennis Erker

John C. Forster

Frank Gibson

James Gillespie

Jane Halford

Brian Hetherington

Becky Hole

Mike House

Gary Killips

Richard Kirby

Stuart Lee

Beverlee Loat

Al Maurer

Ashif Mawji

Maureen McCaw

Lisa Miller

Susan Minsos

Terry Nistor

Bob Normand

Catrin Owen

Ted Power

Jerry Preston

Henry (Hank) Reid

Rob Reynolds

Charlotte Robb

Margot Ross-Graham

Barbara Shumsky

Peter Silverstone

Gaurav Singhmar

Larry Staples

Esther Starkman

Marianne Takach

Merle Taylor

Mr. Justice Dennis R. Thomas

Brian Tod

John Tweddle

Brian Vaasjo

A.H. Wachowich

Bob Walker

Dr. Marvin Weisler

Bart West

Eve Willox

David Wilson

Doris Wilson

John Yerxa

HONORARY GOVERNORS

Marc de La Bruyère

Anne Foote

IN MEMORIAM

David Bentley

Frederick K. Campbell

J.G. Greenough

Ada Hole

Sandy Mactaggart

Jack McBain

Kayla Shocter

LEADERSHIP

Daryl Cloran
Artistic Director

Alan Nursall
Interim Executive Director

ARTISTIC

Jessie van Rijn
Producer

Mieko Ouchi
Associate
Artistic Director

Luc Tellier
Director, Education
& Outreach

Peni Christopher
Asst. to the A.D.
Company Manager

Wayne Paquette
Associate Producer

Diana Stevenson
Manager, Foote
Theatre School

Kristi Hansen
Associate Artist

Ellen Chorley
Students Club Facilitator

ADMINISTRATION

Paul Johnson
Director of Finance

Bettyanna Huggins
Payroll

Shirley Tran
Payroll

Amy Yao
Staff Accountant

Adrienne Kendel-Dirk
Accounts Payable
Specialist

Kayla van Sterren
HR Manager

Ben Osgood
Business Systems
Manager

MARKETING AND SALES

Cassie Kupka
Marketing Director

Kristen Hiemstra
Creative Director

Susanne Chmait
Communications Specialist

Rebecca Harding
Digital Web Designer

Arthur Mah
Videographer

COMMUNITY ENGAGEMENT

Benjamin Oostenbrink
Director of Community
Engagement

Vanessa Wilson
Acting Corporate
Giving Manager

Craig Stumpf-Allen
Fundraising Associate

GUEST SERVICES

Eden Edwards
Senior Sales Manager

Brittany Hinse
Assistant Guest
Services Manager

Josephine Hendrick
Education & Group
Sales Coordinator

SUPERVISORS

Kevin Cambridge

Abby Koshka

Logan Stefura

REPRESENTATIVES

Colin Bluekens

Angie Bustos

Andraya Diogo

Sam Free

Melanie Letourneau

Samantha Mann

Madi May

Abby McDougall

Alex Reyes

Katie Yoner

HOSPITALITY

Hayden Weir
Director of Hospitality

Melissa Budinski
Front of House Manager

Sam Kennedy
Rentals & Events Manager

Cameron Freitas
Asst. Hospitality Manager

Susan Urlacher
Rentals Coordinator

Alex Voutchkov
Rentals Coordinator

FRONT OF HOUSE SUPERVISORS

Rune Jander

Emma Jones

Rose Miller

Davis Shewchuk

Maia Trotter

Elaine Vo

Kate Walker

FRONT OF HOUSE CAPTAINS

Adriana Burns

Robyn Clark

Emily Lizotte

Jessica Ussher

BARTENDERS

Gabby Bernard

Melanie Blake

Colton Cameron

Alex Cherovsky

Kylie Dobransky

Madeleine Doucet

Shyanne Duquette

Saige Evers

Graham Mothersill

Jake Mouallem

Priya Narine

Kera Stevenson

FACILITY

Bill Daniels
Facilities Director

Yang Yang
Maintenance Manager

PRODUCTION

Michael Erwin
Director of Production

Patrick Fraser
Technical Director

Michelle Chan
Asst. Production Manager

Jacinda Grummett
Asst. Technical Director

Matthew Koyata
Asst. Technical Director

Jenna Kerekes
Administrative Asst.

Nick Rose
Head of Audio

Mitch Labrosse
Asst. Head of Audio

Peter Locock
Head of Scenic Carpentry

Jeff Howe
Asst. Head of Scenic
Carpentry

Garret DeRede
Scenic Carpenter

Chris Hayes
Scenic Carpenter

Marissa Milley
Scenic Carpenter

Tegan Herron
Head of Electrics

Tiff Martineau
Interim Asst.
Head of Electrics

Emma Nokes
LX Board Operator

Andrée Simard
Head of Scenic Paint

Megan Paliwoda
Assistant Head
of Scenic Paint

Sarah Karpyschin
Head of Props

Angie Sotiropoulos
Asst. Head of Props

Connor MacDonald
Props Builder

Ximena Pinilla
Props Builder

Marc Anderson
Head of Stage Carpentry

Serge Menard
Stage Carpenter

Patsy Thomas
Head of Wardrobe

Anna Davidson
Asst. Head Wardrobe

Judith Darough
Cutter

Claude Tanguay
Cutter

Laura Lee Osborne
Milliner

Tammy Barry
Stitcher

Christy Greenwood
Stitcher

Brenda Inglis
Stitcher

Kelsey McCammon
Stitcher

Hongning Ke
Stitcher

Barb Becker
Wardrobe Asst.

Olivia Derksen
Head of Wardrobe Running

Janessa Barron
Dresser

Erin Hayes
Dresser

Mandy Mattson
Wardrobe Maintenance

Katie Patton
Head of Wigs

Stephanie Ryder
Wigs Running

Gaylynnne Fell
Wigs Running

FOOTE THEATRE SCHOOL INSTRUCTORS

April Banigan
Billy Brown
Ellen Chorley
Sydney Cogan-Grahn
Emi Gusdal
Crystal Hanson
Sally Hunt
Sydney Keenan
Moses Kouyaté
Josh Languedoc
Emily Lizotte
Barb Mah
Shanni Pinkerton
Damon Pitcher
Clayton Plamondon
Jaimi Reese
Amanda Samuelson
Pamela Schmunk
Eileen Sproule
Nathaniel Tesfaye
Emily Thorne
Kim Turner

YOUNG COMPANY INSTRUCTORS

Deviani Andrea
Mel Bahniuk
Tracy Carroll
Brett Dahl
Patricia Darbasie
Kim Denis
Andraya Diogo
Patrick Lundeen

JANITORIAL

Bee Clean Services

SECURITY

Alberta Crowd
Management