

Bus Drop Off and Parking Information for Schools and Groups

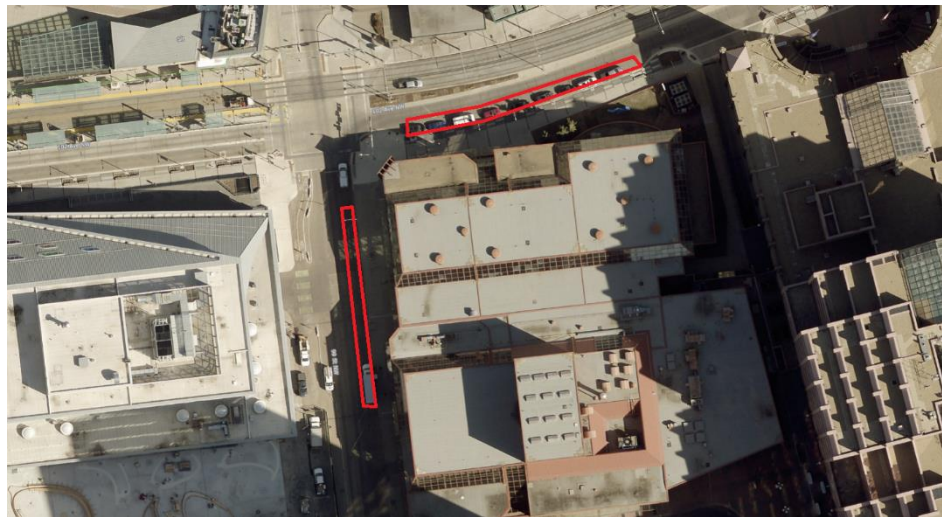
With the new LRT Valley Line, 102 Avenue has been reduced to a single one-way lane going east. We recommend dropping off/picking up students at the Citadel and parking the bus at a nearby bus parking spot. Please review this information with your bus drivers.

Please visit the City of Edmonton website for up-to-date information regarding road closures and traffic disruptions to plan your route.

- <https://www.edmonton.ca/transportation/traffic-reports.aspx>
- <https://www.edmonton.ca/transportation/current-traffic-disruptions.aspx>

Bus Drop Off/Pick Up Locations

1. 99 Street between Shoctor Alley and 102 Avenue. Access to the Citadel's West Entrance, with an Accessible entrance. Please see image below.
2. 102 Avenue between 99 Street and 97 Street. Access to the Citadel's North Entrance. An accessible door for wheelchairs is available on the west side of the Citadel on 99 Street. Please see image below.
3. 97 Street between 102A Avenue and Jasper Avenue. This is on the East Side of the Canada Place building. Students can walk outside to the Citadel entrance or enter the Canada Place entrance on 97 Street and walk through the indoor pedway to the Citadel Theatre.



Please Note: Your bus will NOT be able to park in these locations and wait for your group, as they are loading zones only. We kindly ask that your bus comes to pick you up after your group arrives at one of these locations. As well, all bus drivers must follow the Citadel staff and security's directions to alleviate traffic congestion.

Bus Parking Information

The following downtown tour bus parking stalls are first come first served and can be found at these locations:

1. Jasper Avenue (South side) West of 97 Street
2. MacDonald Drive (South side) West of 101 Street
3. MacDonald Drive (North side) East of 101 Street
4. 99 Street (East side) North of 101A Avenue
5. 102 Street (East side) North of 100 Avenue
6. 104 Street (West side) North of 100 Avenue

7. 105 Street (East side) South of 102 Avenue

All of the above locations have signage designating "Tour Bus Parking Only".

If all of these stalls are full you could make a deal with a property manager of a local shopping mall or similar arrangement.

It can be arranged through The City of Edmonton to have parking meters hooded/EPark Zones reserved but this needs to be done a few days in advance and there is a fee for this service. This can be done by calling the City of Edmonton @ 311.

Please note: If you park in a metered area on the street, you must feed all the meters that the bus takes up or you will get a ticket.

All tour bus parking inquiries/tour bus parking requests are to be emailed to parkingassets@edmonton.ca